



IMAGE

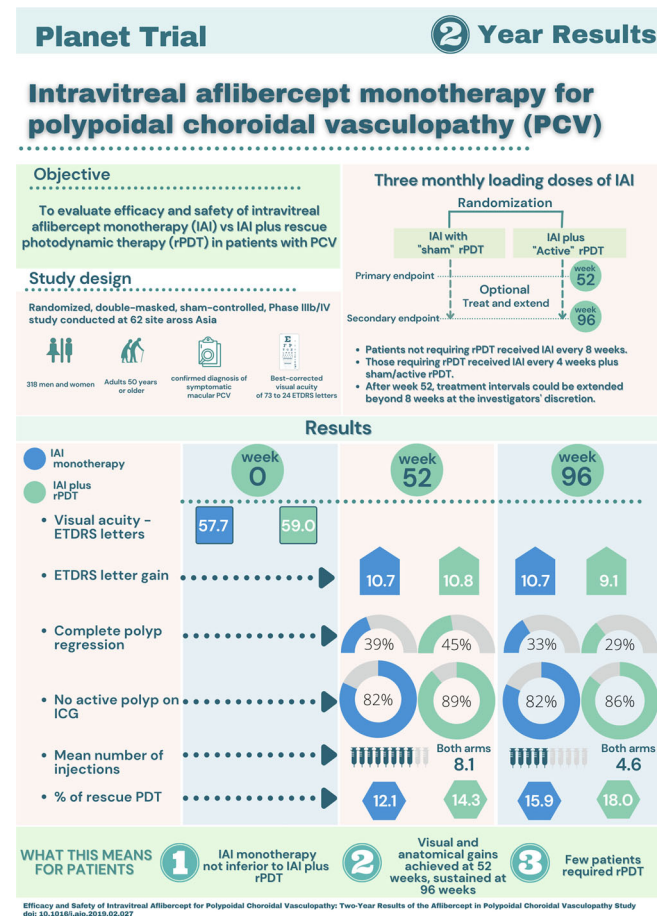
Infographic: “Planet Trial: Intravitreal aflibercept monotherapy for polypoidal choroidal vasculopathy (PCV)”

Shaun Sebastian Sim^{1,2}, Chinmayi Himanshuroy Vyas¹, Rubamalar Gunatheesan¹, Pooi Wah Lott^{1,3}, Christopher Ziyu Sun¹, Kelvin Yi Chong Teo^{1,2} and Chui Ming Gemmy Cheung^{1,2}✉

© The Author(s), under exclusive licence to The Royal College of Ophthalmologists 2021

Eye (2022) 36:1142; <https://doi.org/10.1038/s41433-021-01874-7>

PCV Polypoidal choroidal vasculopathy, IAI Intravitreal aflibercept monotherapy^{1,2}, rPDT rescue Photodynamic therapy, ETDRS Early treatment diabetic retinopathy study, ICG indocyanine green angiography.



REFERENCES

- Lee WK, Iida T, Ogura Y, Chen SJ, Wong TY, Mitchell P, et al. Efficacy and safety of intravitreal aflibercept for polypoidal choroidal vasculopathy in the PLANET Study: a randomized clinical trial. *JAMA Ophthalmol.* 2018;136:786–93. <https://doi.org/10.1001/jamaophthalmol.2018.1804>
- Wong TY, Ogura Y, Lee WK, Iida T, Chen SJ, Mitchell P, et al. Efficacy and safety of intravitreal aflibercept in polypoidal choroidal vasculopathy: two-year results of the aflibercept in polypoidal choroidal vasculopathy study. *Am J Ophthalmol.* 2019;204:80–9. <https://doi.org/10.1016/j.ajo.2019.02.027>

AUTHOR CONTRIBUTIONS

SS, CHV, KT, and GC developed the infographic design. CHV prepared the infographic. GC, SS, KT, PL, CZS, and RG edited and reviewed the infographic and provided the scientific expert advice.

COMPETING INTERESTS

The authors declare no competing interests.

ADDITIONAL INFORMATION

Correspondence and requests for materials should be addressed to Chui Ming Gemmy Cheung.

Reprints and permission information is available at <http://www.nature.com/reprints>

Publisher's note Springer Nature remains neutral with regard to jurisdictional claims in published maps and institutional affiliations.

¹Singapore Eye Research Institute, Singapore National Eye Centre, 11 Third Hospital Avenue, Singapore 168751, Singapore. ²Duke-NUS Medical School, National University of Singapore, Singapore, Singapore. ³Department of Ophthalmology, University Malaya Eye Research Centre, Faculty of Medicine, University of Malaya, 50603, Jalan Universiti, Kuala Lumpur, Malaysia. ✉email: gemmy.cheung.c.m@singhealth.com.sg

Received: 10 November 2021 Revised: 21 November 2021 Accepted: 23 November 2021

Published online: 10 January 2022