



Infographic: Effectiveness in Angle-closure Glaucoma of Lens Extraction (EAGLE) study

C. E. H. Fang¹ · R. Mercer¹ · C. Henein¹ · R. G. Mathew¹

Received: 15 December 2020 / Revised: 18 December 2020 / Accepted: 21 January 2021 / Published online: 5 March 2021
© The Author(s), under exclusive licence to The Royal College of Ophthalmologists 2021

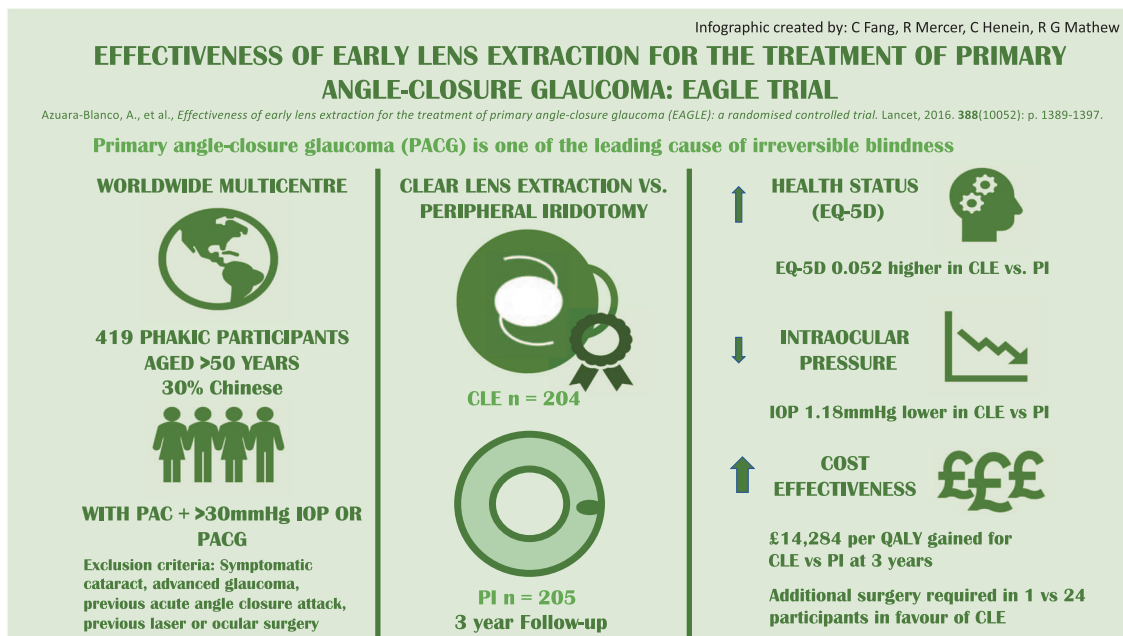


Fig. 1 The Effectiveness in Angle-closure Glaucoma of Lens Extraction (EAGLE) study showed that clear lens extraction was more cost-effective than peripheral iridotomy and topical medication for the treatment of primary angle closure and primary angle closure

glaucoma at 3 years. IOP intraocular pressure, PAC primary angle closure, PACG primary angle closure glaucoma, CLE clear lens extraction, PI peripheral iridotomy.

Reference to original study: Azuara-Blanco A, Burr J, Ramsay C, Cooper D, Foster PJ, Friedman DS, et al. Effectiveness of early lens extraction for the treatment of primary angle-closure glaucoma (EAGLE): a randomised controlled trial. *Lancet*. 2016;388(10052): 1389–1397.

Compliance with ethical standards

Conflict of interest The authors declare no competing interests.

Publisher's note Springer Nature remains neutral with regard to jurisdictional claims in published maps and institutional affiliations.

✉ R. G. Mathew
r.mathew@ucl.ac.uk

¹ UCL Institute of Ophthalmology, London, UK