



**CORRECTION**

# Author Correction: PTEN-L is a novel protein phosphatase for ubiquitin dephosphorylation to inhibit PINK1–Parkin-mediated mitophagy

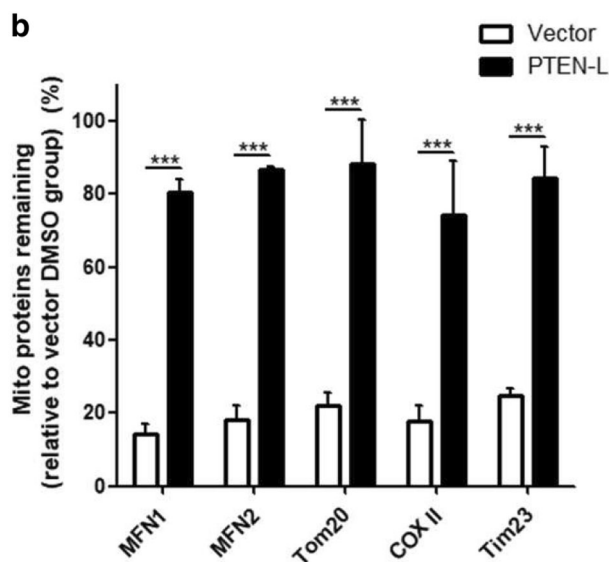
Liming Wang<sup>1</sup>, Yik-Lam Cho<sup>1</sup>, Yancheng Tang<sup>2</sup>, Jigang Wang<sup>1</sup>, Jung-Eun Park<sup>3</sup>, Yajun Wu<sup>4</sup>, Chunxin Wang<sup>5</sup>, Yan Tong<sup>6</sup>, Ritu Chawla<sup>1</sup>, Jianbin Zhang<sup>1,7</sup>, Yin Shi<sup>1</sup>, Shuo Deng<sup>1</sup>, Guang Lu<sup>1</sup>, Yihua Wu<sup>8</sup>, Hayden Weng-Siong Tan<sup>1,9</sup>, Pornteera Pawijit<sup>1</sup>, Grace Gui-Yin Lim<sup>10</sup>, Hui-Ying Chan<sup>1,9</sup>, Jingzi Zhang<sup>11</sup>, Lei Fang<sup>11</sup>, Hanry Yu<sup>1,12,13</sup>, Yih-Cheng Liou<sup>6</sup>, Mallilankaraman Karthik<sup>1</sup>, Boon-Huat Bay<sup>4</sup>, Kah-Leong Lim<sup>1,10</sup>, Siu-Kwan Sze<sup>10</sup>, Celestial T. Yap<sup>1</sup> and Han-Ming Shen<sup>1,9</sup>

*Cell Research* (2018) 28:872–873; <https://doi.org/10.1038/s41422-018-0068-9>

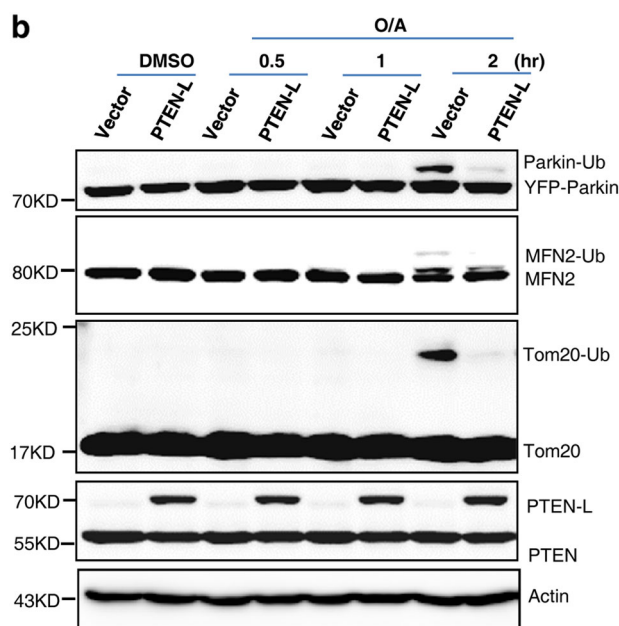
**Correction to:** *Cell Research* (2018) 0:1–16. <https://doi.org/10.1038/s41422-018-0056-0>; Published online 22 June 2018.

We apologize for three errors that we just found in the paper published online on 22 June 2018. Figure 2b was inadvertently duplicated from Supplementary information, Figure S3d. The PTEN-L/PTEN blot in Fig. 4b was inadvertently cropped. The scale bars of ZOOM channel in Supplementary

information, Figure S1f and i, were inadvertently indicated. The corrected version of Figs. 2b and 4b, and the corrected legends of Supplementary information, Figure S1f and i, are provided below. No conclusion was affected by these errors, but



**Fig. 2** PTEN-L negatively regulates mitophagy induced by various mitochondria-damaging agents. **b** Quantification of mitochondrial proteins from **a**



**Fig. 4** PTEN-L impairs Parkin E3 ligase activity and reduces pSer65-Parkin. **b** YFP-Parkin-HeLa cells with PTEN-L stable expression or control vector were treated with O/A (10 nM and 100 nM) for indicated hours and the WCLs were analyzed by immunoblotting as indicated

<sup>1</sup>Department of Physiology, Yong Loo Lin School of Medicine, National University of Singapore, Singapore, Singapore; <sup>2</sup>School of Chinese Medicine, Hong Kong Baptist University, Kowloon Tong, Hong Kong, China; <sup>3</sup>School of Biological Sciences, Nanyang Technological University, Singapore, Singapore; <sup>4</sup>Department of Anatomy, National University of Singapore, Singapore, Singapore; <sup>5</sup>Biochemistry Section, Surgical Neurology Branch, National Institute of Neurological Disorders and Stroke, National Institutes of Health, Bethesda, MD 20892, USA; <sup>6</sup>Department of Biological Sciences, Faculty of Science, National University of Singapore, Singapore, Singapore; <sup>7</sup>Department of Oncology, Clinical Research Institute, Zhejiang Provincial People's Hospital, People's Hospital of Hangzhou Medical College, Hangzhou, Zhejiang, China; <sup>8</sup>Department of Toxicology, Zhejiang University School of Public Health, Hangzhou, Zhejiang, China; <sup>9</sup>Graduate School for Integrative Sciences and Engineering, National University of Singapore, Singapore, Singapore; <sup>10</sup>National Neuroscience Institute, Singapore, Singapore; <sup>11</sup>Jiangsu Key Laboratory of Molecular Medicine, Model Animal Research Center, Medical School of Nanjing University, Nanjing, Jiangsu, China; <sup>12</sup>Mechanobiology Institute, National University of Singapore, Singapore, Singapore and <sup>13</sup>Institute of Bioengineering and Nanotechnology, A\*STAR, Singapore, Singapore

Correspondence: Han-Ming Shen (phshsm@nus.edu.sg)

Published online: 23 July 2018

we apologize for not detecting them before publication and any inconvenience caused.

**Figure S1 PTEN-L resides at the outer mitochondrial membrane.** **f** Co-localization of Flag-PTEN-L with Tom20 without or with CCCP (5  $\mu$ M, 4 h treatment) was examined by

confocal fluorescence microscopy. Flag-PTEN-L (Green); Tom20 (Red); co-localization channel (White). Scale bars, 5 and 2  $\mu$ m (ZOOM). **i** Co-localization of Flag-PTEN-L with Calreticulin. Flag-PTEN-L (Green); Calreticulin (Red); co-localization channel (White). Scale bars, 5 and 2  $\mu$ m (ZOOM).