





CORRECTION

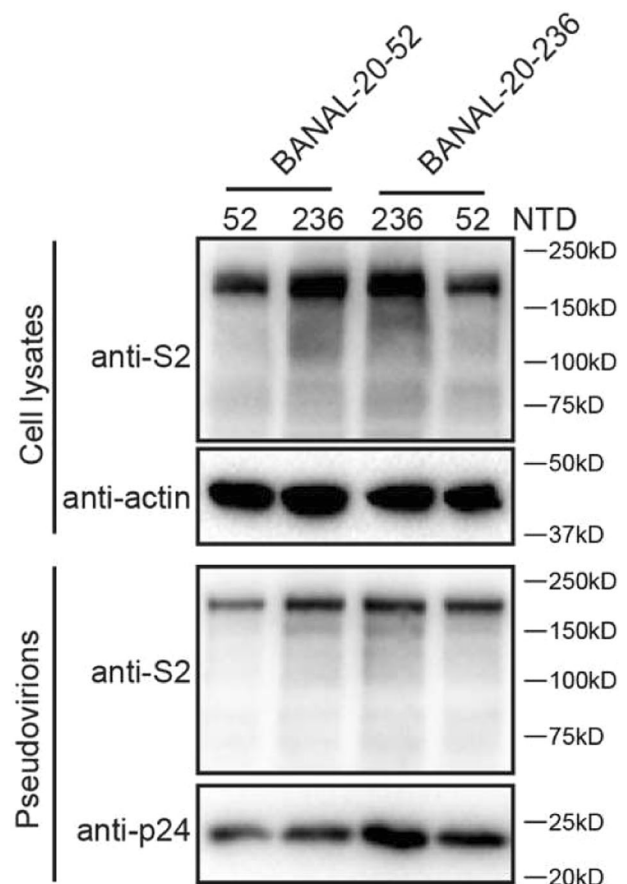
Open Access

Author Correction: Host susceptibility and structural and immunological insight of S proteins of two SARS-CoV-2 closely related bat coronaviruses

Xiuyuan Ou, Ge Xu, Pei Li, Yan Liu, Fuwen Zan, Pan Liu, Jiaxin Hu, Xing Lu, Siwen Dong, Yao Zhou, Zhixia Mu, Zhiqiang Wu, Jianwei Wang , Qi Jin, Pinghuang Liu, Jian Lu , Xiangxi Wang  and Zhaohui Qian 

Correction to: *Cell Discovery* (2023) 9:78
<https://doi.org/10.1038/s41421-023-00581-9>
published online 28 July 2023

During the final submission of this manuscript, we inadvertently misplaced the Supplementary Fig. S4 as the Supplementary Fig. S5. The correct Supplementary Fig. S5 is shown as below. We are sorry for any inconveniences that might cause.



Published online: 09 October 2023

© The Author(s) 2023



Open Access This article is licensed under a Creative Commons Attribution 4.0 International License, which permits use, sharing, adaptation, distribution and reproduction in any medium or format, as long as you give appropriate credit to the original author(s) and the source, provide a link to the Creative Commons license, and indicate if changes were made. The images or other third party material in this article are included in the article's Creative Commons license, unless indicated otherwise in a credit line to the material. If material is not included in the article's Creative Commons license and your intended use is not permitted by statutory regulation or exceeds the permitted use, you will need to obtain permission directly from the copyright holder. To view a copy of this license, visit <http://creativecommons.org/licenses/by/4.0/>.