

## A state-of-the-art consultation platform for dentists

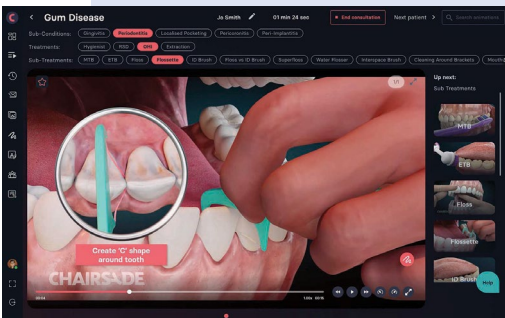
Research has shown animations to significantly improve patient understanding of health and medical information. As such, Chairsyde is a useful tool when it comes to explaining gingival disease and related treatment options.

Chairsyde is a state-of-the-art consultation platform designed for dentists. It offers a comprehensive library of animations covering a wide range of oral health issues and treatment solutions, including those associated with gum disease. Videos clearly demonstrate what gum disease is, how it progresses and what treatments are available to arrest its development. All benefits, risks and limitations of each treatment option are covered in detail, empowering the patient to take control of their oral health.

The platform is easy to use, automatically featuring associated topics and treatments on each page for quick and simple navigation.

Discover Chairsyde today.

For more information, or to book a demo, visit [www.chairsyde.com](http://www.chairsyde.com) or call 020 3951 8360.



## Awards available for orthodontic and dental research

Align Technology, Inc. has announced the opening of its 2024 Annual Research Award Programme to support clinical and scientific dental research in universities across the globe. This year, up to \$300,000 will be awarded to university faculty for scientific and technological research initiatives to advance patient care in the fields of orthodontics and dentistry. Align Technology's Research Award Programme has funded approximately \$3 million in research since the programme's inception in 2010.

Awards available for dental research at universities are available in the following regions: Americas (US, Canada, Mexico, Central and South America): Four one-year awards of up to US\$25,000 each.

EMEA (Europe, the Middle East and Africa): Four one-year awards of up to US\$25,000 each.

APAC (Asia-Pacific): Four one-year awards of up to US\$25,000 each. Eligible applicants for dental research awards include full-time and part-time faculty involved in dental or scientific research at universities where Invisalign treatment or the iTero scanner is available. All applications are reviewed by an independent academic committee that forwards its recommendations to Align for final selection. Consideration will be given to first-time applications from a university programme. Programme details, instructions, and application forms for prospective applicants can be found at <https://learn.aligntech.com/pages/61/resources> (for Americas, EMEA and APAC applicants).

Research proposals and completed applications must be received by 5:00 p.m. Pacific Time on 8 March 2024. Award recipients will be notified by 3 June 2024.

## To refer or not to refer in endodontics

It can be difficult to know when to treat an endodontic case and when to refer it, especially if this is a discipline you are less confident in. If you ever need a second opinion or wish to simply bounce ideas off leading clinicians in the field, EndoCare are there for you.

EndoCare's team consists of registered specialists and expert endodontists who draw on several decades of experience to support your diagnosis and treatment plan. They can answer any questions and help you make a confident decision as to whether referral is appropriate or not.

Think of EndoCare like an extension of your team. They can share some advice and

even provide advanced treatment where it is beyond what you are comfortable delivering. Contact EndoCare today to find out more.

For further information call EndoCare on 020 7224 0999 or visit [www.endocare.co.uk](http://www.endocare.co.uk).



## Receive expert insight on lingual braces

Lingual braces are an exceptional treatment option that provide the aesthetic benefits that patients crave, yet they're still not commonly chosen by patients. Build your offering and take part in the Lingual Braces course with the IAS Academy.

Across the programme you'll receive expert insight on the entire treatment process, gaining a comprehensive understanding of lingual mechanics and

how to provide treatments that last. An extensive hands-on session helps attendees apply their theoretical knowledge to stay aptly prepared for real-world cases. Support is offered throughout by experienced clinicians that are ready for any question and query.

The course lecturer is Asif Chatoo who opened The London Lingual Orthodontic Clinic, the first UK-based clinic dedicated to lingual treatments, nearly 20 years ago. His

body of work makes him an acclaimed expert in the field and a well-respected educator at the IAS Academy.

To learn more about expanding your aesthetic orthodontic treatments, and the exceptional training you'll receive, contact the IAS Academy team today.

For more information on upcoming IAS Academy training courses, visit [www.iasortho.com](http://www.iasortho.com) or call 01932 336470 (Press 1).