

Calms and soothes sore mouths without staining

Trycare are the UK distributors of Clinisept+ hypochlorous mouthwash, which delivers incredibly high antimicrobial protection without causing irritation or oral sensitisation.

Recommended for patient use before, during and after treatment to minimise the risk of aerolised contamination, Clinisept+ can also be used for all post treatment recovery, daily hygiene maintenance and resolution of sensitive oral tissues.

Whilst traditional mouthwashes provide effective cleansing they also come with drawbacks. Chlorhexidine, alcohol and peroxides can irritate ulcers and mucous membranes. They can cause allergic reactions. They do nothing to promote cell regeneration. Chlorhexidine can stain teeth and the tongue. Chlorhexidine and alcohol are subject to antimicrobial resistance.

Clinisept+ utilises hypochlorous chemistry, which forms part of the body's natural healing mechanism, to provide superior levels of microbial control (surpassing the requirements of EN1040, EN1276 and EN14476), but is not subject to antimicrobial resistance. Powerfully effective, but still completely compatible with oral mucosa and dental enamel, Clinisept+ mouthwash is non-toxic, neutral pH, non-irritant, hypoallergenic, dermatologically tested, anti-inflammatory, causes no staining, and contains no alcohol, harsh chemicals, colouring or flavouring.

Clinisept+ can be used in surgery as a pre and post rinse, and at home to aid patient recovery and oral hygiene. For further information about Clinisept+ Mouthwash contact your local Trycare representative, call 01274 885544 or visit www.trycare.co.uk.

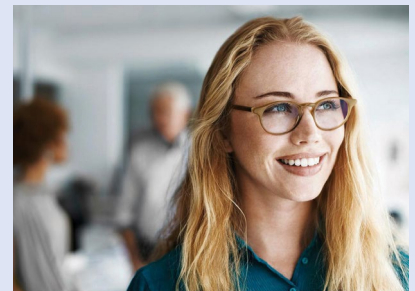
The ultimate orthodontic tool

Engineered for precision, comfort, and aesthetics, ClearCorrect's aligners represent the ultimate orthodontic tool for practising orthodontists. Created and evolved from decades of material science, research, and innovation, these aligners retain 10x more of their initial force than competitors and 4x proven tear resistance, by combining proprietary ClearQuartz tri-layer material, a high and flat trimline, and scientifically proven clinical features. Meanwhile, the physical product range is backed by a powerful digital ecosystem designed to offer control and flexibility over treatments while maximising productivity.

The company's solutions are now available in 56 countries.

ClearCorrect has also been busy innovating and launching new products and features. At the International Dental Show (IDS) in Cologne, Germany, in March, ClearCorrect announced seven new products and software features designed to assist dentists in their treatment of patients, creating a seamless digital end-to-end experience.

To find out more visit <https://www.straumann.com/clearcorrect/gb/en/patients.html>.



A top choice for referrals

When you're looking to refer a patient elsewhere, it's vital you choose a practice you can trust. EndoCare combines world-class treatment with cutting-edge facilities to ensure that every patient referred to them receives the highest standard of care. Following referral, the patient journey begins with a pre-treatment consultation. During this time,



they will be fully updated on any treatment that's going to be performed, as well as have a chance to voice any concerns or request any special attention.

Once EndoCare have finished treatment, the patient will be returned to your care with the following:

- Comprehensive treatment notes
- After-care instructions
- Our suggested next steps.

Find out why EndoCare is the top choice for professionals all over the country by contacting the team today.

For further information call EndoCare on 020 7224 0999 or visit www.endocare.co.uk.

Intuitive imaging and practice management solutions

The British Dental Conference & Dentistry Show (BDCDS) is an excellent opportunity to discover the latest developments in dentistry – and Carestream Dental is thrilled to be exhibiting this May.

Carestream offers high-quality intraoral and extraoral imaging equipment, intuitive imaging software and practice management solutions. With Sensei Cloud, simplify your entire workflow from beginning to end on a centralised, easy-to-use platform

and experience the perfect balance between business functionality and clinical brilliance while you grow your practice. Get hands on with the CS 8200 3D Neo Edition CBCT, featuring the broadest range of fields of view in its category and offering versatile imaging capabilities to support your diagnostic and treatment planning needs. All of Carestream's products and solutions are designed to improve workflows in your practice and ensure you are producing high-quality outcomes.

So, join Carestream on 12 and 13 May to find out how they can help you succeed!

For more information on Carestream Dental visit www.carestreamdental.co.uk.

