

Dental products and services

Please send product news information and images to Kate Quinlan at k.quinlan@nature.com. Product news is provided as a service to readers using text and images from the manufacturer, supplier or distributor and does not imply endorsement by the BDI. Normal and prudent research should be exercised before purchase or use of any product mentioned.

Implant education for the whole team

Based in London's West End, The One to One Implant Education offers postgraduate and advanced implant training for dentists, and also a new diploma for dental nurses.

The fully accredited PG course is renowned for its hands-on element, to give novice dentists the confidence to place and restore implants in their own practice. With small class sizes, and peer mentoring, you will build the foundations for a successful and fulfilling implant career.

The advanced course is taught over six days, with two additional international modules. Delegates will learn the techniques, and gain the knowledge required for carrying out more complex cases successfully and safely, and boost their referrals.

Finally, and new for 2023, is the diploma for dental nurses, so they can support implant dentists and look after patients comprehensively. Led by Dr Fazeela Khan-Osborne, a renowned clinician and educator, the programmes at The One to One Implant Education regularly sell out, so don't delay! Ask for details today, to build a world-class implant career.

To reserve your place or to find out more, visit <https://121implanteducation.co.uk> or call 020 7486 0000.

Keep it simple and safe

Do you find that maintaining your air supply is time-consuming and stressful? Why not leave it to the experts?

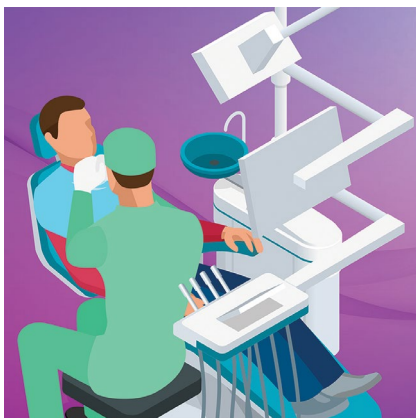
With Air to the Chair from Dental Air, you benefit from an affordable, stress-free service that covers your every need.

Air to the Chair includes:

- Next-day delivery and installation of a brand-new air compressor
- Complete 24/7 breakdown support from a dedicated team of engineers
- Regular maintenance
- All certification to ensure compliance.

To find out more, contact the team at Dental Air today.

Visit www.dentalair.com.



The top fluoride dose just got better

Exclusively available from Trycare, Centrix's FluoroDose is the award winning 5% sodium fluoride varnish that's easy to apply in less than a minute.

To make your life easier, Centrix's redesigned FluoroDose packaging has new patented features to enhance its handling, comfort and patient safety. In addition to a single dose of varnish, each LolliTray contains a Benda Brush applicator and has been designed so that it can be 'popped up' with one hand, making removal simple and safe.

FluoroDose has a smooth consistency, fast application and choice of five patient-pleasing flavours – caramel, bubble gum, mint, cherry and melon. It is supplied in an Introductory Pack containing all five flavours and refills of individual flavours.

Because the varnish is freshly mixed prior to application it always has the optimum fluoride distribution, unlike syringes which frequently separate out leaving inconsistent mixes of ineffectively low and dangerously high fluoride concentrations. Each LolliTray contains enough varnish to protect a full adult dentition. Non-gritty and easy to apply in an undetectably thin film, it is colourless so that it does not affect the appearance after bleaching etc.

Quick-drying and long-lasting, FluoroDose is suitable for adults with caries risk factors as well as children. It can be applied as often as needed and is FDA-approved for treating dental sensitivity.

For further information about the complete Centrix range contact your local Trycare representative, call 01274 885544 or visit www.trycare.co.uk.

