

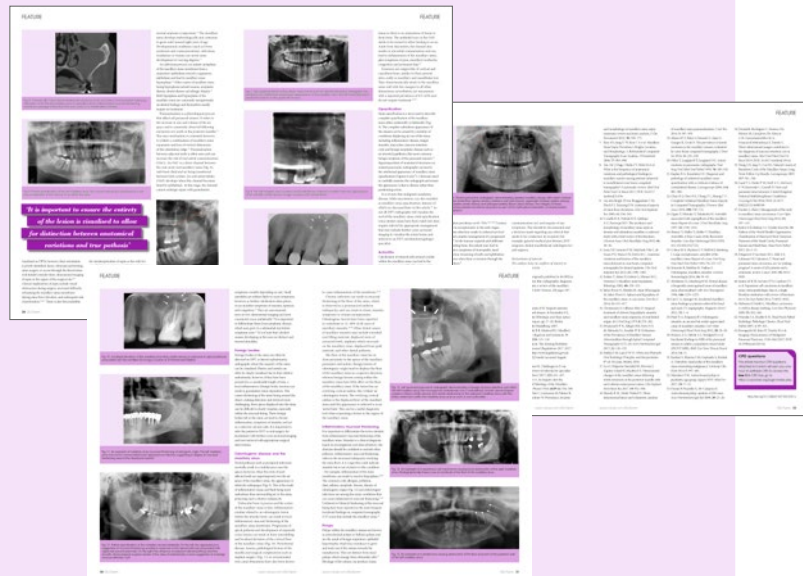
# BDJ Team CPD



## CPD questions June 2020

To answer these questions and earn one free hour of CPD, visit the CPD Hub: <https://bit.ly/33upiN9>

**Article:** *Challenges in plain film radiographic diagnosis for the dental team*



### 1. The maxillary sinus:

- A. is also known as the Schnediderian sinus
- B. is lined by a continuum of oral epithelium
- C. drains into the middle meatus of the inner ear
- D. has the maxillary palate as its base

### 2. Pneumatisation:

- A. is unique to the maxillary sinus
- B. can increase the risk of oral antral communication
- C. when present, means that oral antral communication and oral antral fistula are synonymous
- D. is extremely rare between adjacent teeth

### 3. Benign lesions:

- A. of odontogenic origin tend to displace the floor of the maxillary sinus in an inferior direction
- B. arising within the maxillary sinus significantly depress the floor
- C. with an overlying cortical outline are likely to be of an odontogenic origin
- D. cause a characteristic appearance known as an antral corona

### 4. Which of the following statements is true?

- A. sinusitis and inflammatory mucosal thickening of the maxillary sinus are the same
- B. odontogenic cysts within the maxillary sinuses appear as rounded, soft tissue masses in the region of the floor
- C. maxillary sinus malignancies are common
- D. malignant lesions generally cause bone expansion rather than destruction

**To answer these questions and earn one free hour of CPD, visit the CPD Hub: <https://bit.ly/33upiN9>.**