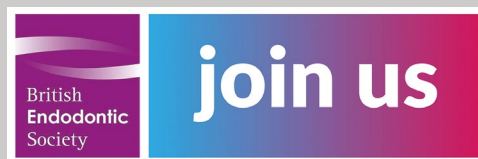


All are welcome

Whether you're an experienced endodontist, or are new to the field, the British Endodontic Society (BES) welcomes new members. The BES aims to advance endodontology to maintain and improve the health of the nation, as well as encourage and facilitate the lifelong education of practitioners.

Any dentist with an interest in endodontology who wishes to enhance their skills is welcome to join the Society. Those who do can expect a number of excellent benefits including a monthly copy of the International Endodontic Journal, reduced



rates at BES conferences, membership of the European Society of Endodontology (ESE), and the opportunity to apply for BES Awards and Prizes.

To find out more about the BES, and to become a member, visit www.britishendodonticsociety.org.uk or call 01494 581542.

Complete control over treatment planning

ClearCorrect now gives clinicians even more control over their treatment plans with ClearPilot 7.0.

With enhanced features like Bite Jump Simulation, and the Arch Editing Tool, along with a variety of user interface improvements, treatment planning and simulation has never been simpler.

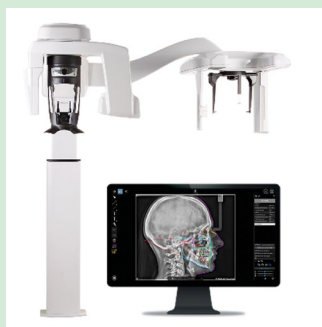
ClearCorrect also now offers expanded editing capabilities for ClearControl Clinical Features, making it easier than ever to utilise 3D editing controls to design optimal anterior and posterior bite ramps, pontics, bars, engagers and cutouts. And, with more precise editing tools on offer, clinicians have more control over the teeth they keep in position, with the ability to 'lock' teeth and simulate IPR.

If you'd like to find out more about treatment planning features from ClearCorrect, visit: www.clearcorrect-uk.com.

CBCT unit for perfect clarity

When it comes to extraoral imaging, high resolution 3D images can help determine the best treatment options for patients.

The Neo Edition of the CS 8200 3D, from Carestream Dental, is a CBCT system powered by premium imaging technologies that deliver superb image quality (both 2D and 3D) in every modality.



Featuring an extended field of view, ranging from 4cm x 4cm to 12cm x 10cm, the model is ideal for dental professionals looking to expand their treatment capabilities.

For more information on Carestream Dental and our new extended warranties visit www.carestreamdental.co.uk. For the latest news and updates, follow us on Facebook and Instagram @carestreamdental.uk.

Save time

Speed up your daily operations with Assistina One. The user-friendly device makes dental handpiece maintenance simple, consistently cleaning and lubricating your equipment with ease and avoiding excess oil in your handpieces.

Offering high-quality results, Assistina One fits into your workflows, ensuring you are carrying out proper handpiece care when it is needed most. The entire lubrication and channel cleaning process is completed in just 18 seconds, perfect for busy dental practices. Additionally, the Assistina Twin allows you to prepare one handpiece as another is being maintained in just 10 seconds – the perfect time saving solution.

To find out more visit www.wh.com/en_uk, call 01727 874990 or email office.uk@wh.com.



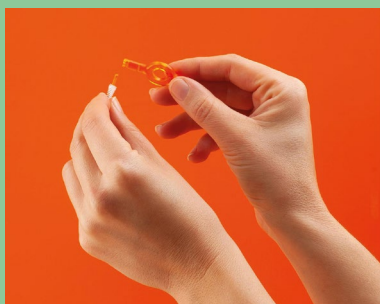
Interdental brushing, for a clean mouth at every age

With your support, people can continue to maintain good preventive habits as they get older.

Cleaning interdentally, along with twice-daily brushing, will enable elderly patients to thoroughly remove plaque from between their teeth, to reduce their risk of disease.

Demonstrate how easy this is to do, with CPS Prime interdental brushes from premium Swiss oral care brand, Curaprox.

Help them select the correct size; the range has options to clean even the narrowest



space, gently, with a single movement. Just once, in and out, and they're done.

The click system means they can only need to replace the old brush – simply click it off, and click the new one on. Less cost, less plastic waste.

At every age, dental health is crucial for

health and wellbeing. With CPS Prime interdental brushes and Curaprox, patients can optimise oral hygiene and their daily routines.

For more information, visit www.curaprox.co.uk.