

A marvel of modern dentistry

The Axano treatment centre, delivered proudly by Clark Dental, provides you with everything you need for your day-to-day work.

Expertly manufactured by Dentsply Sirona, the Axano dental chair allows you to individualise the way that you work – with the endodontic, dental implant and face treatment function, you can simplify your workflow and improve clinical safety.

During treatment, all steps are presented clearly on the Smart-Touch user interface, which lets you operate all essential functions with ease. Also, you can also access, edit and control media without having to switch to another computer.

To improve patient comfort, the headrest can be easily adjusted, controlled by the

Smart-Touch function or via the foot control.

There's plenty more to discover with the incredible Axano treatment centre.

If you'd like to find out more about Clark Dental's solutions, call the team on 01268 733 146, email info@clarkdental.co.uk or visit www.clarkdental.co.uk.



Create a clearer picture

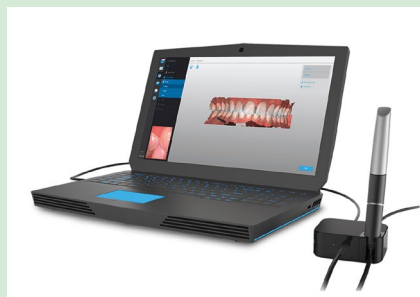
The Straumann Virtuo Vivo intraoral scanner is a user-friendly solution for taking digital impressions.

Create a clearer picture of your patient's teeth – this model combines the power of two miniature 3D scanners into a hand-held intraoral scanner. And, it produces true to life colour scanning, allowing for better communication between you and your technician.

A small and light handpiece, it is ergonomically designed for a pen-like grip offering unparalleled patient comfort. Removable, autoclavable sleeves in coated metal ensure proper hygiene for your patients – these sleeves can withstand sterilisation in an autoclave for up to 250 cycles.

So, for a modern, safe, and user-friendly solution for intraoral scanning to start you off on your digital journey, consider the Virtuo Vivo.

For more information on the Straumann Virtuo Vivo intraoral scanner visit www.straumann.com/digital/gb/en/home/equipment/io-scanners/virtuo-vivo.html.



Maintaining momentum for exponential growth

To grow as a dentist and as a person requires focus and dedication. It can be easy to lose momentum or become disheartened when something doesn't go to plan.

However, it is when you feel low or totally broken that you make the most progress. These are the times you are truly put to the test and the times that you can become significantly stronger, more resilient and more determined.

Of course, it always helps to have support and somewhere to turn when you face challenges and are looking for a solution. Dr Mahmood Mawjee and The RE-IGNITE Academy provide such a place for all dentists wishing to be the very best they can be.

They are there to keep you on track, to offer practical and proactive advice that can make a life-changing difference to every aspect of your world. Why not contact the team to see how they could help you build and maintain momentum towards becoming your happier and more successful future self.

For more information about The RE-IGNITE Academy, follow @thereigniteacademy or @mahmoodmawjee on *Instagram* or visit www.thereigniteacademy.com.

EXPONENTIAL GROWTH

Enter the Cloud

Cloud-based practice management solutions are set to revolutionise how dental practices operate.

So, why not take the first step and embrace some cloud-based features today?

Patient Bridge from Carestream Dental has been specifically developed to introduce cloud-based usability to existing R4+ practice management software users.

Simply by upgrading your existing set up, you can benefit from a wealth of exceptional new features, including automated marketing



materials, patient surveys and more.

This way, you can enhance the patient experience instantly, helping to create a more convenient service and encouraging good reviews – the best marketing tool for any practice!

For more information, contact Carestream Dental on 0800 169 9692 or visit www.carestreamdental.co.uk.