

**CORRECTION** **OPEN**

Correction: Drp1-dependent remodeling of mitochondrial morphology triggered by EBV-LMP1 increases cisplatin resistance

Longlong Xie, Feng Shi, Yueshuo Li, We Li, Xinfang Yu, Lin Zhao, Min Zhou, Jianmin Hu, Xiangjian Luo, Min Tang, Jia Fan, Jian Zhou, Qiang Gao, Weizhong Wu, Xin Zhang, Weihua Liao, Ann M. Bode and Ya Cao

Signal Transduction and Targeted Therapy (2022)7:398

; <https://doi.org/10.1038/s41392-022-01261-y>

Correction to: *Signal Transduction and Targeted Therapy* (2020) **5**:56, <https://doi.org/10.1038/s41392-020-0151-9>, published online 20 May 2020

Fig. S1c. The correct figures are given. The authors confirm that these corrections do not change the result interpretation or conclusions of the article.

In this article¹ an error was noticed in Fig. 3d left (p-Drp1 Ser637). The images were misassigned. And one writing error was found in

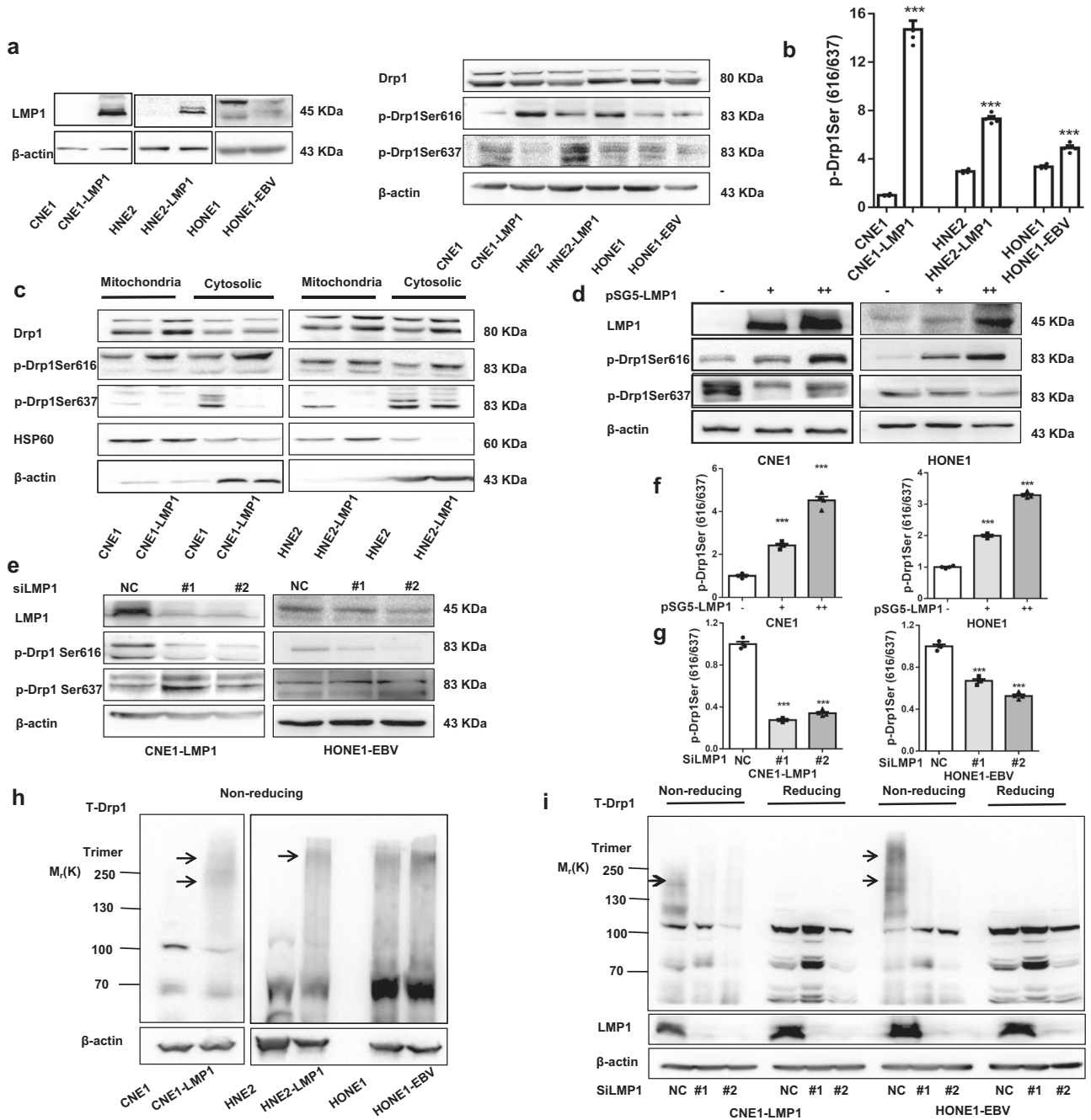


Fig. 3 EBV-LMP1 activates the mitochondrial fission protein Drp1. **a, b** The effect of LMP1 on Drp1 phosphorylation. NPC cell lysates were subjected to western blot (WB) analysis with the antibodies indicated **a**. The expression ratio of p-Drp1 Ser616 to p-Drp1 Ser637 was calculated via densitometric analysis of each immunoblot using ImageJ software **b**. **c** Subcellular fractions were isolated from NPC cell lines and subjected to WB analysis. **d, e** Cell lysates of EBV-LMP1 overexpression or knockdown cell lines were subjected to WB for measurement of the phosphorylation of Drp1 Ser616 and Drp1 Ser637. **f, g** The expression ratio of p-Drp1 Ser616 to p-Drp1 Ser637 was calculated via densitometric analysis of each immunoblot using ImageJ software. **h, i** Drp1 oligomers were resolved from monomers by nonreducing SDS-PAGE, and specific bands are denoted by arrows. Nonreducing SDS-PAGE detected the effect of EBV-LMP1 on Drp1 self-assembly

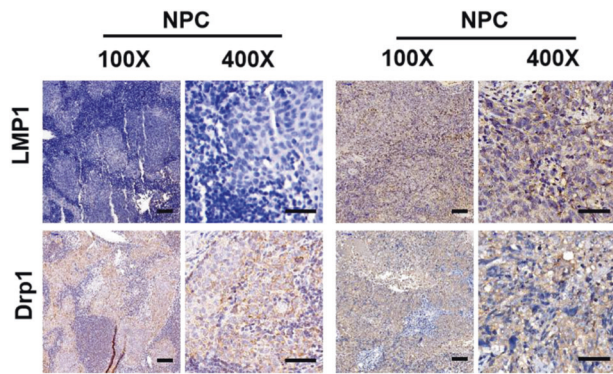


Fig. S1 (c) Representative IHC staining of LMP1 and *Drp1* expression from tissues slices of 26 NPC patients. 100x: Scale bar, 100 μ m; 400x: Scale bar, 50 μ m

REFERENCES

1. Xie, L., Shi, F. & Li, Y. et al. Drp1-dependent remodeling of mitochondrial morphology triggered by EBV-LMP1 increases cisplatin resistance. *Sig. Transduct Target Ther.* **5**, 56, <https://doi.org/10.1038/s41392-020-0151-9> (2020).



Open Access This article is licensed under a Creative Commons Attribution 4.0 International License, which permits use, sharing, adaptation, distribution and reproduction in any medium or format, as long as you give appropriate credit to the original author(s) and the source, provide a link to the Creative Commons license, and indicate if changes were made. The images or other third party material in this article are included in the article's Creative Commons license, unless indicated otherwise in a credit line to the material. If material is not included in the article's Creative Commons license and your intended use is not permitted by statutory regulation or exceeds the permitted use, you will need to obtain permission directly from the copyright holder. To view a copy of this license, visit <http://creativecommons.org/licenses/by/4.0/>.

© The Author(s) 2022