



IMAGE

Insights Image for “Effect of prebiotic and probiotic supplementation on neurodevelopment in preterm very low birth weight infants: findings from a meta-analysis”

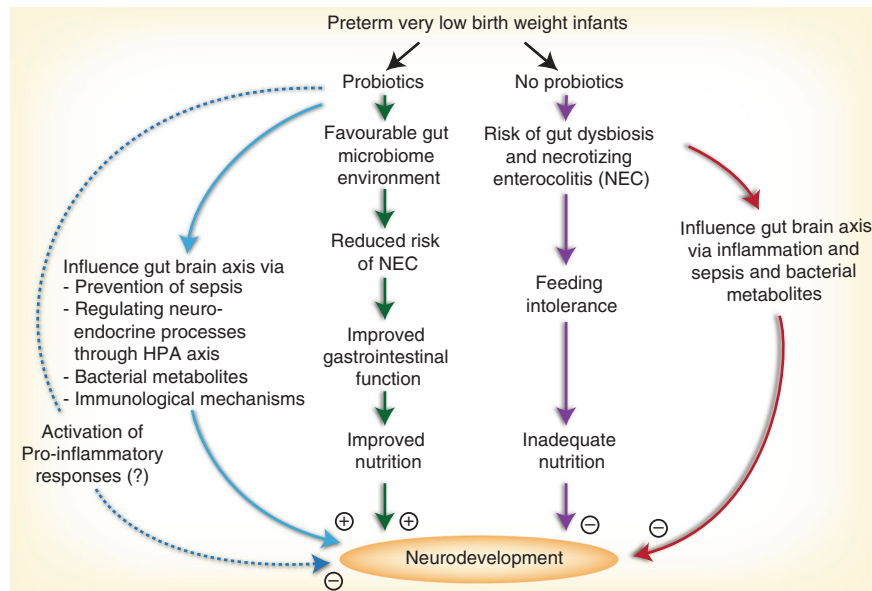
Ravi Prakash Upadhyay¹, Sunita Taneja¹, Ranadip Chowdhury¹, Tor A. Strand^{2,3} and Nita Bhandari¹

Pediatric Research (2020) 87:969; <https://doi.org/10.1038/s41390-019-0616-0>

Pathways through which prebiotic/probiotic supplementation in preterm very low birth weight infants could influence neurodevelopment.

REFERENCES

- Upadhyay, R. et al. Effect of prebiotic and probiotic supplementation on neurodevelopment in preterm very low birth weight infants: findings from a meta-analysis. *Pediatric Res.* (2018). <https://www.nature.com/articles/s41390-018-0211-9>



¹Centre for Health Research and Development, Society for Applied Studies, New Delhi, India; ²Centre for Intervention Science in Maternal and Child Health, Centre for International Health, University of Bergen, Bergen, Norway and ³Department of Research, Innlandet Hospital Trust, Brumunddal, Norway
Correspondence: Ravi Prakash Upadhyay (ravi.upadhyay@sas.org.in)

Received: 13 August 2019 Revised: 13 August 2019 Accepted: 13 August 2019
Published online: 17 October 2019