



IMAGE

Insights image for exploration of potential biochemical markers for persistence of patent ductus arteriosus in preterm infants at 22–27 weeks’ gestation

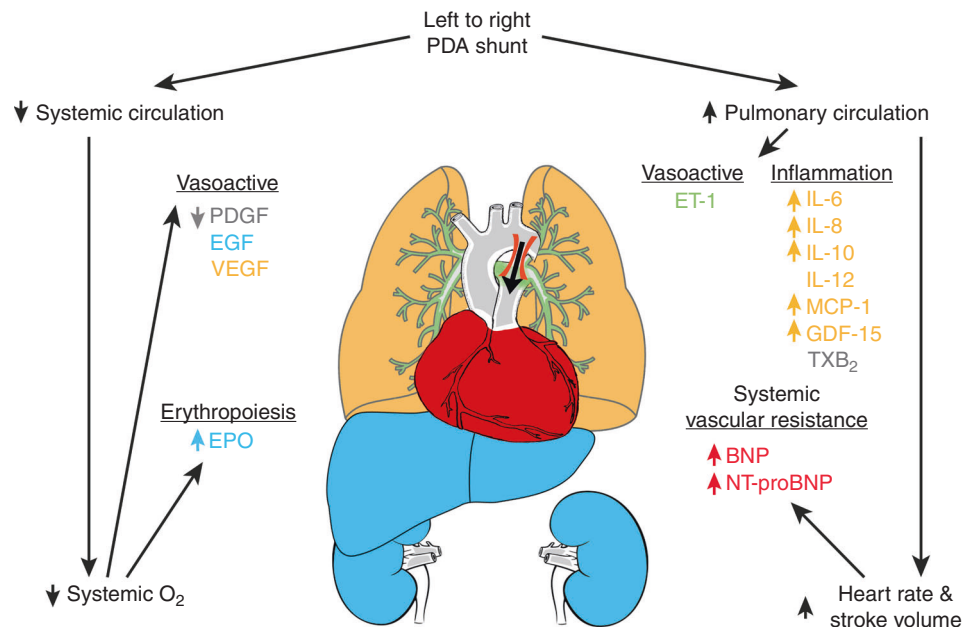
Karl Wilhelm Olsson¹, Anders Larsson², Anders Jonzon¹ and Richard Sindelar¹

Pediatric Research (2019) 86:413; <https://doi.org/10.1038/s41390-019-0458-9>

Illustration of the studied biomarkers proposed to indicate a persistent patent ductus arteriosus (PDA), their suggested relationship to a PDA, and the organs and tissues that potentially produces them.

REFERENCE

1. Olsson, K. W., Larsson, A., Jonzon, A., Sindelar R. Exploration of potential biochemical markers for persistence of patent ductus arteriosus in preterm infants at 22-27 weeks’ gestation. *Pediatr Res.* (2018). <https://doi.org/10.1038/s41390-018-0182-x> [Epub ahead of print]



¹Department of Women’s and Children’s Health, Uppsala University, Uppsala, Sweden and ²Department of Medical Sciences, Uppsala University, Uppsala, Sweden
Correspondence: Karl Wilhelm Olsson (karl_wilhelm.olsson@kbh.uu.se)

Received: 23 May 2019 Accepted: 29 May 2019
Published online: 13 June 2019