

CORRECTION **OPEN**



Correction: Enhanced YB1/EphA2 axis signaling promotes acquired resistance to sunitinib and metastatic potential in renal cell carcinoma

Hailong Ruan , Sen Li, Lin Bao and Xiaoping Zhang

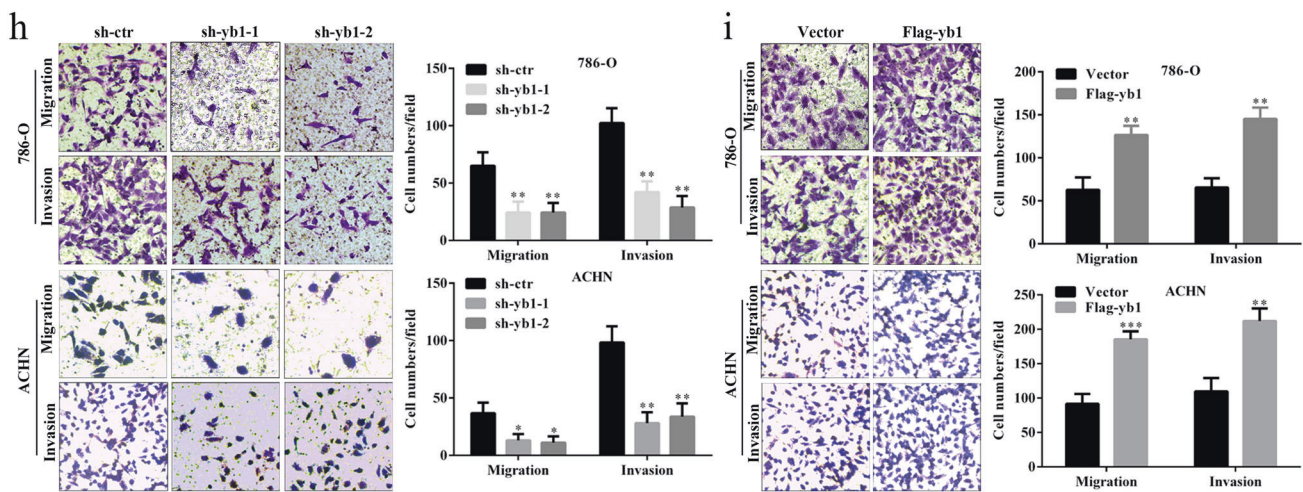
© The Author(s) 2022

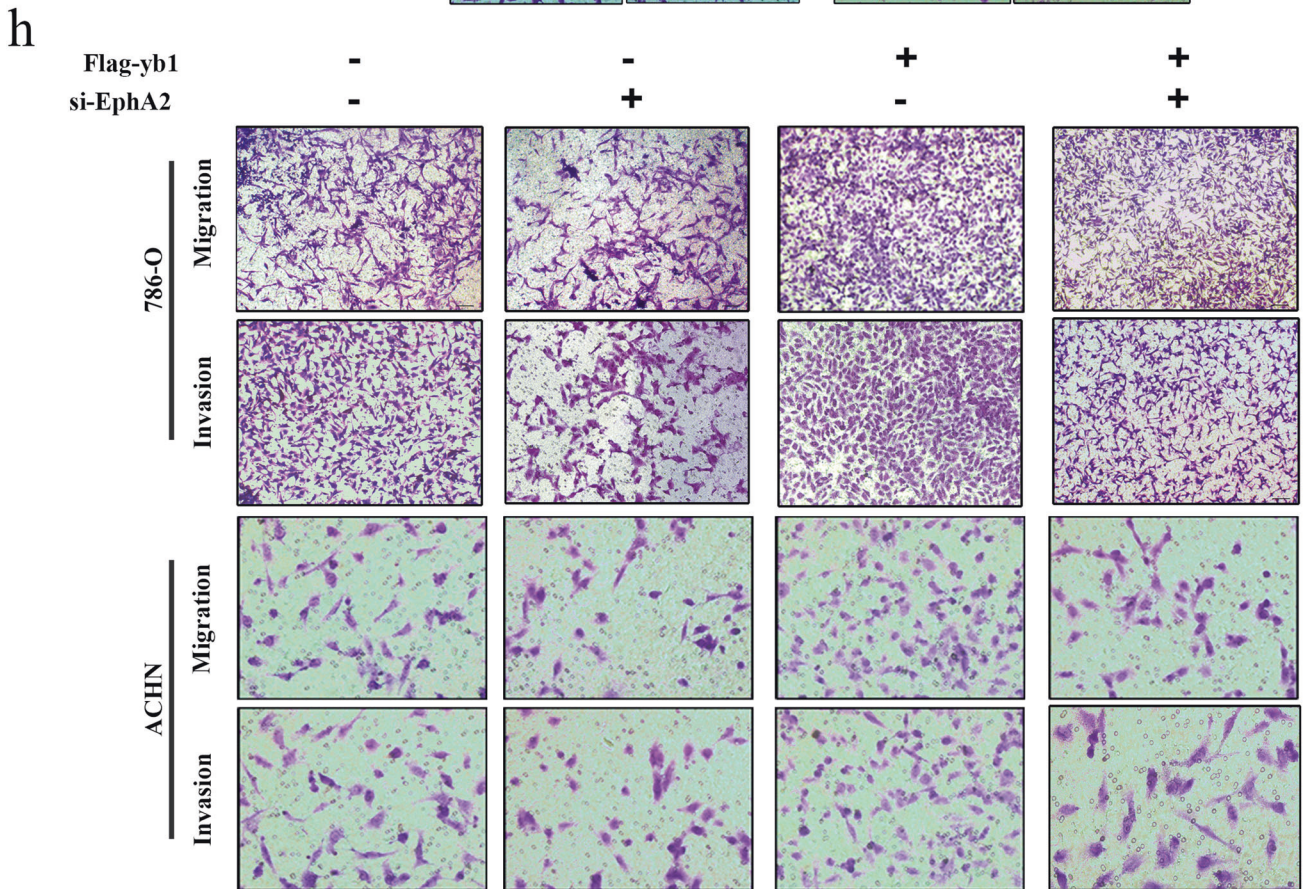
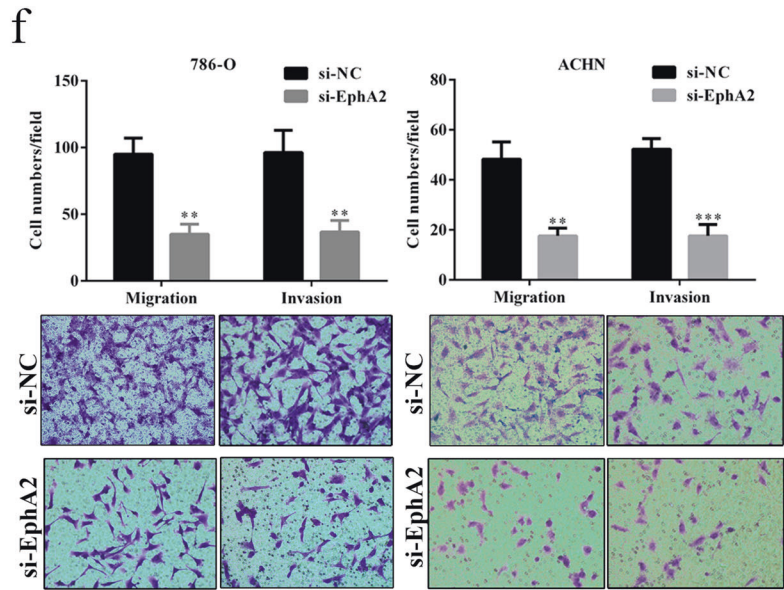
Oncogene (2023) 42:165–167; <https://doi.org/10.1038/s41388-022-02534-0>

Correction to: *Oncogene* <https://doi.org/10.1038/s41388-020-01409-6>, published online 19 August 2020

Supplementary Fig. 2d. The authors confirm these inadvertent errors do not affect the conclusions presented in the article and apologize for any inconvenience caused.

Following the publication of this article, the authors noted incorrect transwell images included in Fig. 2h-i, Fig. 4f-h and





The original article has been corrected.



Open Access This article is licensed under a Creative Commons Attribution 4.0 International License, which permits use, sharing, adaptation, distribution and reproduction in any medium or format, as long as you give appropriate credit to the original author(s) and the source, provide a link to the Creative Commons license, and indicate if changes were made. The images or other third party material in this article are included in the article's Creative Commons license, unless indicated otherwise in a credit line to the material. If material is not included in the article's Creative Commons license and your intended use is not permitted by statutory regulation or exceeds the permitted use, you will need to obtain permission directly from the copyright holder. To view a copy of this license, visit <http://creativecommons.org/licenses/by/4.0/>.

© The Author(s) 2022