

ARTICLE

Open Access

Effect of nutritive and non-nutritive sweeteners on hemodynamic responses to acute stress: a randomized crossover trial in healthy women

Jérémy Cros¹, Lucie Bidlingmeyer¹, Robin Rosset¹, Kevin Seyssel¹, Camille Crézé¹, Nathalie Stefanoni¹, Philippe Schneider¹ and Luc Tappy¹

Abstract

Background: The mechanisms by which chronic stress increases the risk of non-communicable diseases remain poorly understood. On one hand, chronic stress may increase systemic vascular resistance (SVR) and blood pressure, which may lead to blood vessels injury and altered myocardial perfusion. On the other hand, chronic stress may promote the overconsumption of sugar-containing foods and favor obesity. There is indeed evidence that sweet foods are preferentially consumed to alleviate stress responses. The effects of nutritive and non-nutritive sweeteners (NNS) on hemodynamic stress responses remain however largely unknown.

Objective/design: This study aimed at comparing the effects of sucrose-containing and NNS-containing drinks, as compared to unsweetened water, on hemodynamic responses to acute stress in twelve healthy female subjects. Acute stress responses were elicited by a 30-min mental stress (5-min Stroop's test alternated with 5-min mental arithmetic) and a 3-min cold pressure test (CPT), each preceded by a resting baseline period. Hemodynamic stress responses were investigated by the repeated measurement of mean arterial pressure and the continuous monitoring of cardiac output by thoracic electrical bioimpedance measurement. SVR was selected as a primary outcome because it is a sensitive measure of hemodynamic responses to acute stress procedures.

Results: With all three drinks, SVR were not changed with mental stress ($P = 0.437$), but were increased with CPT ($P = 0.045$). Both mental stress and CPT increased mean arterial pressure and heart rate (all $P < 0.001$). Cardiac output increased with mental stress ($P < 0.001$) and remained unchanged with CPT ($P = 0.252$). No significant differences in hemodynamic responses were observed between water, sucrose and NNS (stress \times condition, all $P > 0.05$).

Conclusions: These results demonstrate that sucrose and NNS do not alter hemodynamic responses to two different standardized acute stress protocols.

Introduction

Psychosocial stress is currently suspected to play an important role in the development of non-communicable diseases¹. This is notably based on observations that both acute and chronic stress can favor consumption of energy-dense foods², and that stress-induced

glucocorticoid secretion may promote visceral fat deposition³, thus leading in the long term to the development of abdominal obesity, insulin resistance and increased cardiometabolic risk⁴. It has also been proposed that hemodynamic responses to acute stress may cause acute myocardial ischemia^{5,6}. Interestingly, sucrose consumption has been reported to reduce sympatho-adrenal activation and hemodynamic responses to acute stress in rodents⁷ and humans^{8,9}. It has further been postulated

Correspondence: Luc Tappy (Luc.Tappy@unil.ch)

¹Faculty of Biology and Medicine, Department of Biomedical Sciences, University of Lausanne, 1015 Lausanne, Switzerland

© The Author(s) 2020



Open Access This article is licensed under a Creative Commons Attribution 4.0 International License, which permits use, sharing, adaptation, distribution and reproduction in any medium or format, as long as you give appropriate credit to the original author(s) and the source, provide a link to the Creative Commons license, and indicate if changes were made. The images or other third party material in this article are included in the article's Creative Commons license, unless indicated otherwise in a credit line to the material. If material is not included in the article's Creative Commons license and your intended use is not permitted by statutory regulation or exceeds the permitted use, you will need to obtain permission directly from the copyright holder. To view a copy of this license, visit <http://creativecommons.org/licenses/by/4.0/>.

that exposure to chronic stress may trigger the consumption of sweet foods in order to alleviate stress responses¹⁰. Such stress-induced eating behavior may however be associated with a risk of energy overconsumption and obesity¹¹.

In rats, sucrose-nutritive and non-nutritive sweeteners (NNS) consumption has been associated with a down-regulation of corticotropin-releasing factor (CRF) expression in the brain¹². It was therefore proposed that the non-metabolic properties of sweet foods were instrumental in this effect, likely by stimulating the release of intracerebral opioid^{13,14}. However, one study reported that sucrose, but not saccharin, decreased intracerebral CRF secretion in adrenalectomized rats, suggesting that energy-dependent metabolic effects of sucrose were also involved¹⁵. This hypothesis was further supported by a human study showing that salivary cortisol response to mental stress was decreased after a high-sucrose diet, but increased after a NNS-containing diet¹⁶.

The effects of nutritive and non-nutritive sweeteners on hemodynamic responses to acute stress remain to date highly unknown. In order to address this issue, we submitted a group of healthy women to a mental stress, which elicits predominant β -adrenergic hemodynamic responses¹⁷, and to a cold pressure test (CPT), which elicits predominant α -adrenergic responses¹⁸, together with repeated oral administration of sucrose-sweetened or NNS-sweetened drinks or of unsweetened water.

Materials and methods

Ethics

The experimental part of this study was conducted between September 2015 and October 2016. This study was performed in accordance with the 1983 revision of the Declaration of Helsinki and was approved by the Human Research Ethics Committee of Canton de Vaud. All participants were fully informed of the nature and risks involved by the procedures and provided informed, written consent. This study was registered at clinicaltrials.gov as NCT02973334.

Participants

Eligibility, allocation, follow-up and analysis of participants are depicted in Fig. 1. This study included sixteen participants who were recruited by advertisement at local university campuses. All were Caucasian females, 18 to 40 years old, with a body mass index between 18.5 and $25 \text{ kg} \times \text{m}^{-2}$ and used monophasic oral contraceptive agents. Exclusion criteria were blood pressure $>140/90 \text{ mmHg}$, history or current psychological and cardiovascular disorders, anemia or history of anemia, daily consumption of $>5 \text{ dL}$ caloric and NNS sweetened-beverages, $>400 \text{ mg}$ caffeine, $>10 \text{ g}$ alcohol, color blindness, body weight variation $>3 \text{ kg}$ over the past 4 weeks,

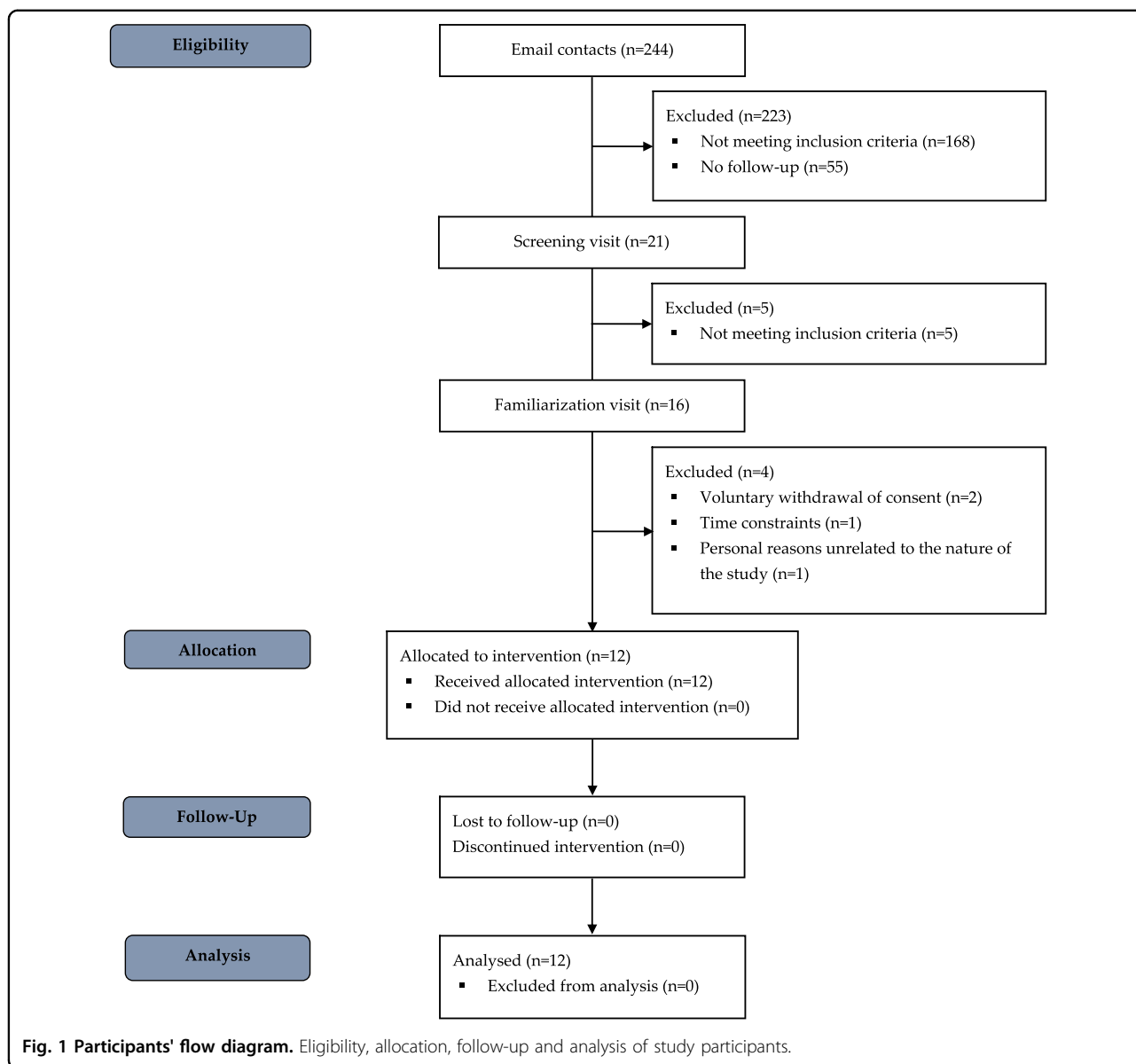
performing physical activity $>4 \text{ h} \cdot \text{week}^{-1}$, any current medical treatment, current smokers, or consumption of illicit drugs. Eligible participants were invited to a familiarization visit to be exposed to the mental stress and CPT procedures, as conducted during the functional evaluations. Twelve female participants were finally enrolled and completed the study (mean \pm SD age: 21.8 ± 2.4 years; body mass index: $21.6 \pm 1.7 \text{ kg} \times \text{m}^{-2}$).

Study design

Each participant took part to three functional evaluations, during which they consumed either water-containing, or sucrose-containing or NNS-containing test drinks, according to a randomized, crossover design. Successive visits were separated by 1–3-week washout periods. Participants received instructions to consume an energy-balanced, weight-maintenance diet during the two days preceding each functional evaluation. They were asked to avoid sugars-rich and NNS-rich foods, and to abstain from consuming caffeine and alcohol during this pre-evaluation period. Participants were also instructed to have a minimal 8 h sleep opportunity time per night and to refrain from structured physical activity. Compliance was checked using food, physical activity, and sleep records.

For each functional test, participants reported at 0700 to the Metabolism, Nutrition, and Physical Activity unit from the Clinical Research Center of the Lausanne University Hospital. They had been fasting since 2200 the day before. Upon arrival, they were asked to void and were weighed (Seca 708, Seca GmbH, Hamburg, Germany). They were then comfortably installed in a bed in a reclining position and four dual hemodynamic sensors (BioZ AdvaSense, Vermed, Buffalo, New York, United States) were placed to enable thoracic electrical bioimpedance measurements. Briefly, two sensors were positioned on each side of the neck while two others were placed on midaxillary lines at the level of the xiphoid process.

At 0800 (time 0 min), the functional evaluation started with a 90-min resting period (Fig. 2). It was followed by a 30-min mental stress (time 90–120 min), consisting of 5-min periods of Stroop's color word conflict test alternated with 5-min periods of complex mental arithmetic operations¹⁹. Thereafter, a 30-min recovery period was allowed, and a 3-min CPT was carried out at time 150 min. CPT consisted in immersing their right hand for 3 min in ice water¹⁸. From time 60 min, and every 15 min until the end of the test (time 60, 75, 90, 105, 120, 135, and 150 min), participants ingested 25-mL test drinks containing either water (Water condition), $106 \text{ g} \cdot \text{L}^{-1}$ sucrose (Hänseler AG, Herisau, Switzerland; Sucrose condition) or a mix of $392 \text{ mg} \cdot \text{L}^{-1}$ sodium cyclamate (INRESA, Bartenheim, France), $181 \text{ mg} \cdot \text{L}^{-1}$ acesulfame K (Celanese Corporation, Sulzbach, Germany), and $116 \text{ mg} \cdot \text{L}^{-1}$ aspartame (INRESA, Bartenheim, France) (NNS condition), based on



the composition of commercial drinks²⁰. Before swallowing every 25-mL test drink, participants were instructed to rinse their mouth for 10 s with it to activate oral sweet taste receptors.

Mean arterial pressure (calculated as 1/3 systolic blood pressure + 2/3 diastolic blood pressure) was recorded at time 30, 45, 75, 85, 95, 100, 105, 110, 115, 120, 125, 130, 135, 145, 153, 158, and 163 min using an automatic sphygmomanometer (BioZ ICG Monitor, CardioDynamics, San Diego, California, United States), positioned on the volunteers' left arm. In order to obtain accurate values, arterial pressure was measured in triplicate at each time points and the averages were retained. Throughout the study, cardiac output was measured by thoracic electrical bioimpedance using a BioZ impedance cardiograph (model BZ-4110-221;

CardioDynamics, San Diego, California, United States). SVR was calculated as proposed by the manufacturer, i.e.,:

$$SVR = 80 \times \frac{(\text{mean arterial pressure} - \text{central venous pressure})}{\text{cardiac output}}$$

where the default value for central venous pressure was 6 mmHg.

Data handling and statistical analyses

The primary outcome of this study was SVR changes across drink conditions (i.e., Water, Sucrose, and NNS). A sample size of *n* = 12 participants was calculated (1-β: 90%; α = 0.05) to detect a 6 ± 4% difference in

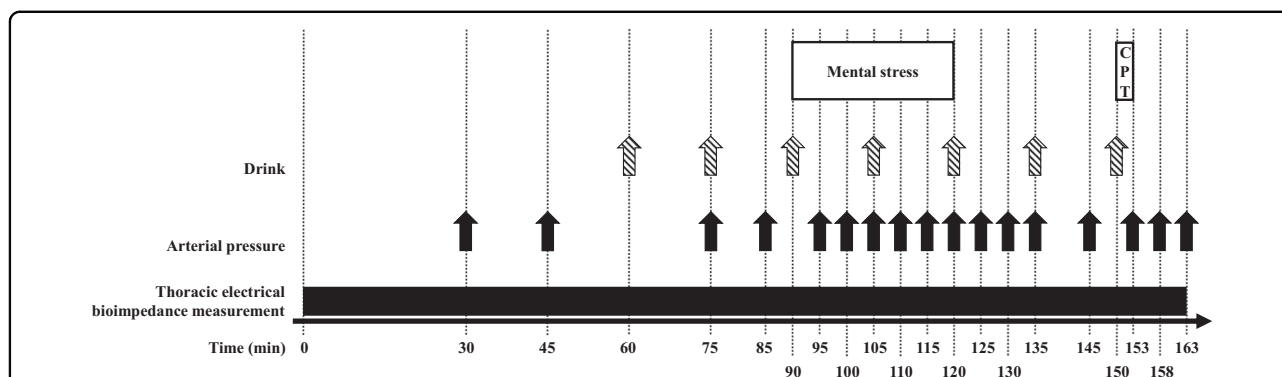


Fig. 2 Illustration of the functional evaluation. After a 2-day prescribed, weight-maintenance diet, 12 participants were studied on 3 occasions, according to a randomized, crossover design. Briefly, after an overnight fast, the functional evaluation started with a 90-min resting period. It was followed by a 30-min mental stress (consisting of 5-min periods of Stroop’s color word conflict test alternated with 5-min periods of complex mental arithmetic operations), a 30-min recovery period and a 3-min CPT. From time 60, and every 15 min until the end of the test, participants ingested 25-mL test drinks containing either pure water, 106 g.L⁻¹ sucrose or a mix of NNS (392 mg.L⁻¹ sodium cyclamate, 181 mg.L⁻¹ acesulfame K and 116 mg.L⁻¹ aspartame) after a 10-s mouth rinse. The effects of test drinks on hemodynamic stress responses were investigated by the repeated measurement of mean arterial pressure, as well as the continuous monitoring of cardiac output by thoracic electrical bioimpedance measurement. Each functional evaluation was separated by 1–3-week washout periods. CPT: cold pressure test.

postprandial SVR after the ingestion of sucrose, compared with water, as previously reported²¹. The sequence of treatment allocation was determined by random and balanced generation of six-sequence blocks using Microsoft Excel software (Microsoft Corp., Redmond, WA, USA). Hemodynamic data were averaged by periods, i.e., before drink ingestion (time 0–60 min), “baseline pre-mental stress” (time 60–85 min), “mental stress” (time 90–120 min), “baseline pre-CPT” (time 125–145 min), and “CPT” (time 150–153 min). Prior to statistical analysis, data distribution and equality of variances were checked using Shapiro-Wilk and Bartlett tests, respectively. Non-normally distributed data (i.e., SVR before drink ingestion and during the baseline pre-CPT period) were transformed using the Box-Cox algorithm. Effects of acute stress, condition and their interaction were investigated using mixed-model analyses. *P* values < 0.05 were considered as significant. Statistical analyses were performed using the R software, version 3.3.1 (R foundation for Statistical Computing, Vienna, Austria). Data are presented as mean ± SD.

Results

Body weight and hemodynamic parameters before drink ingestion (time 0–60 min)

Participants showed no significant differences in body weight between the 3 experimental conditions (Table 1). SVR, mean arterial pressure, cardiac output and heart rate were all similar before drink ingestion (Table 1).

Effects of a 30-min mental stress

Hemodynamic parameters during the baseline pre-mental stress period (time 60–85 min) were all similar

between conditions (SVR, *P* = 0.422; mean arterial pressure, *P* = 0.185; cardiac output, *P* = 0.805; heart rate, *P* = 0.932; Fig. 3). Mental stress did not change SVR (Fig. 3a), but significantly increased mean arterial pressure (Fig. 3b), cardiac output (Fig. 3c) and heart rate (Fig. 3d). Changes in hemodynamic parameters during mental stress were not altered by drink conditions (all stress × condition interactions, *P* > 0.05).

Effects of a 3-min CPT

Hemodynamic parameters during the baseline pre-CPT period (time 125–145 min) were all similar between conditions (SVR, *P* = 0.202; mean arterial pressure, *P* = 0.448; cardiac output, *P* = 0.235; heart rate, *P* = 0.230; Fig. 4). CPT significantly increased SVR (Fig. 4a), mean arterial pressure (Fig. 4b) and heart rate (Fig. 4d), but did not change cardiac output (Fig. 4c). Changes in hemodynamic parameters during CPT were not altered by drink conditions (all stress × condition interactions, *P* > 0.05).

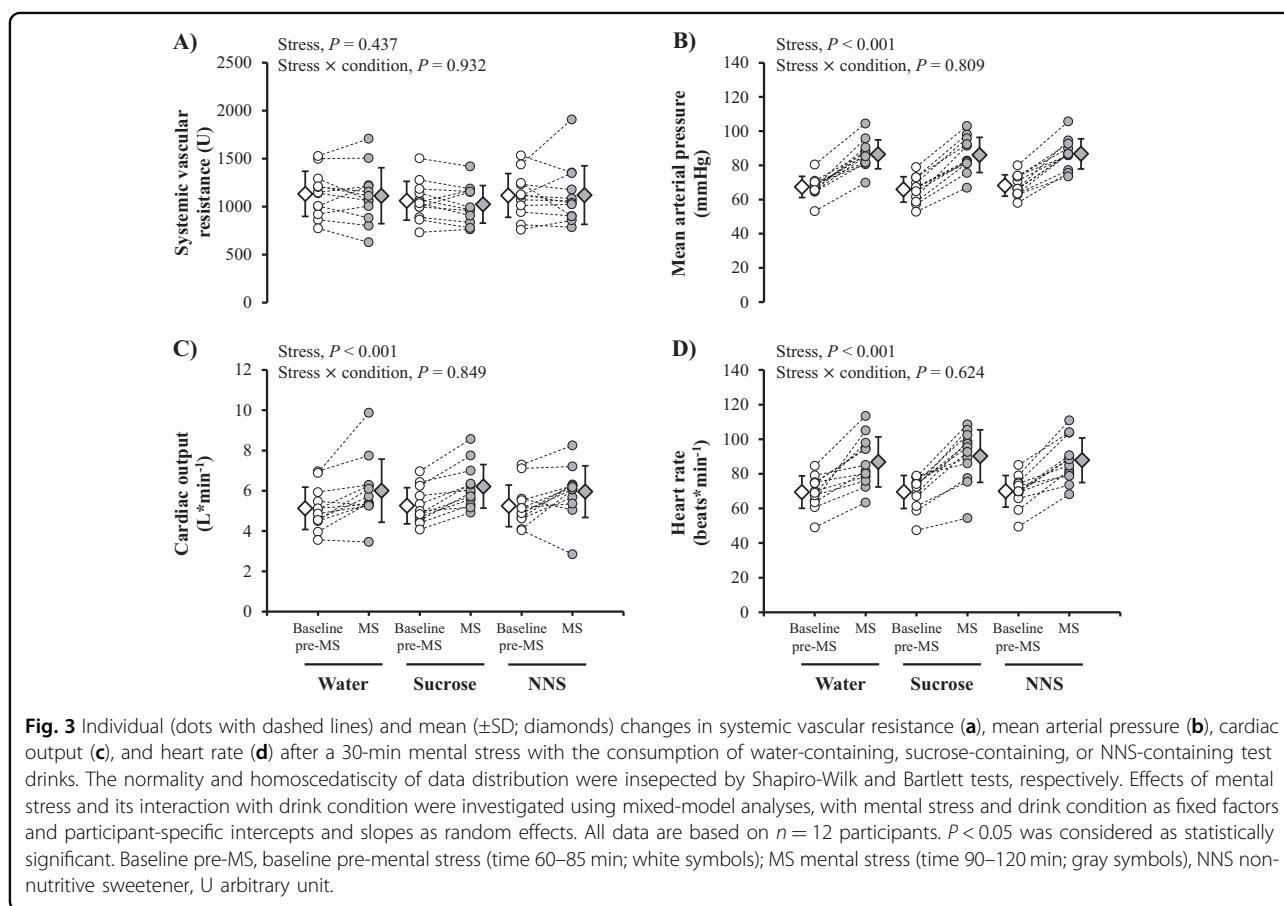
Discussion

The aim of this study was to investigate whether sweet drinks change hemodynamic stress responses. To test this hypothesis, twelve healthy women were sequentially exposed to a 30-min mental stress and a 3-min CPT, i.e., two stress procedures which both stimulate SNS activity, but elicit different hemodynamic responses through differential activations of β-adrenergic or α-adrenergic receptors. Hemodynamic responses were monitored on three separate occasions, with subjects consuming either water-containing, or sucrose-containing or NNS-containing drinks. We

Table 1 Body weight and hemodynamic parameters before drink ingestion.

| | Water | Sucrose | NNS | P |
|---|------------|------------|------------|-------|
| Body weight (kg) | 59.2 ± 4.7 | 59.1 ± 4.5 | 59.3 ± 4.6 | 0.678 |
| Resting systemic vascular resistance (U) | 1140 ± 213 | 1135 ± 192 | 1208 ± 254 | 0.505 |
| Resting mean arterial pressure (mmHg) | 66 ± 6 | 65 ± 6 | 66 ± 6 | 0.322 |
| Resting cardiac output (L × min ⁻¹) | 5.0 ± 1.0 | 4.9 ± 0.8 | 4.7 ± 0.8 | 0.416 |
| Resting heart rate (beats × min ⁻¹) | 69 ± 10 | 66 ± 10 | 67 ± 9 | 0.223 |

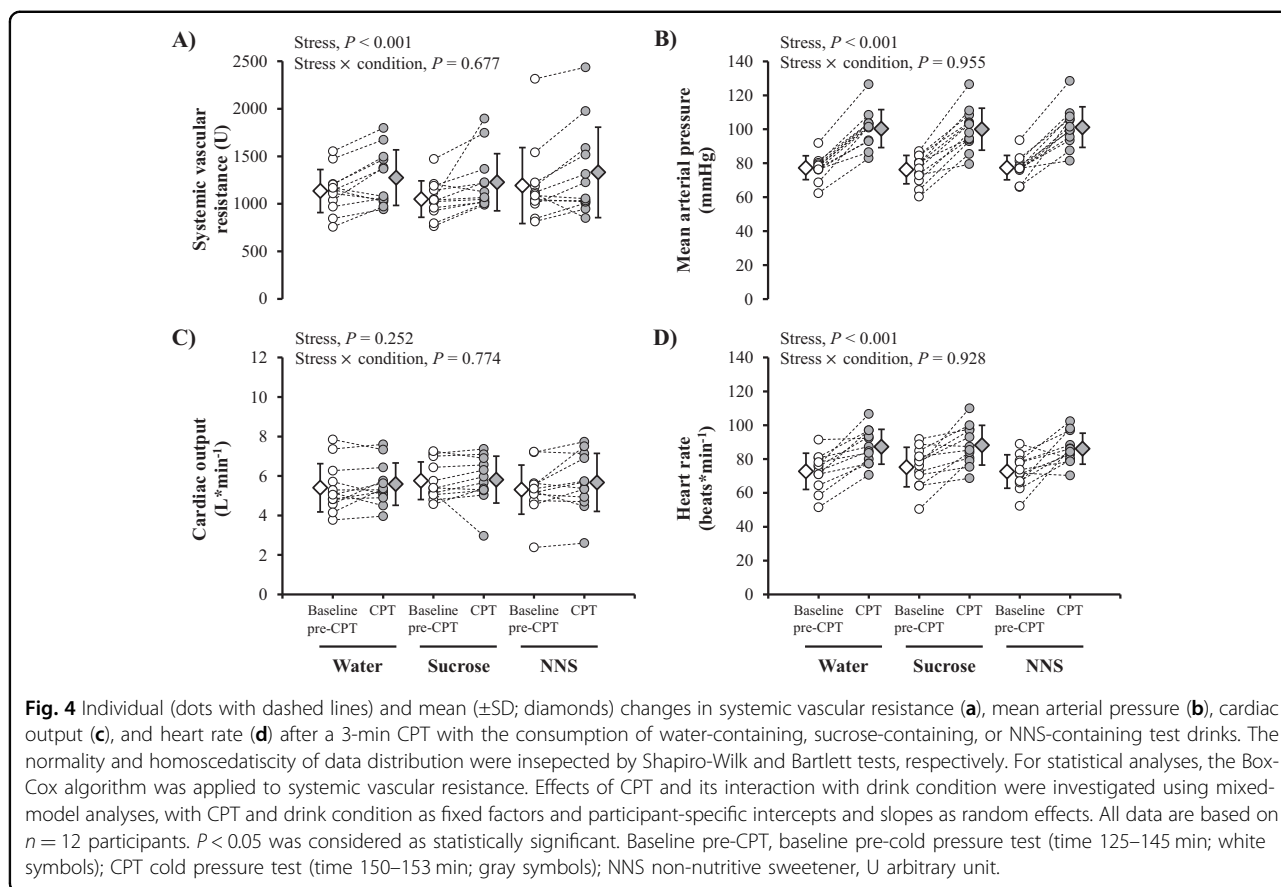
Values are expressed as mean ± SD. The normality and homoscedasticity of data distribution were inspected by Shapiro-Wilk and Bartlett tests, respectively. For statistical analyses, the Box-Cox algorithm was applied to systemic vascular resistance. Differences between conditions were investigated using mixed-model analyses, with condition as fixed factor and participant-specific intercepts and slopes as random effects. All data are based on *n* = 12 participants. *P* < 0.05 was considered as statistically significant. NNS non-nutritive sweetener, U arbitrary unit



selected SVR as a primary outcome (measured by thoracic electrical bioimpedance measurement), because this parameter is sensitively altered by acute stress procedures^{17,18}. Mental stress and CPT both produced the expected effects on hemodynamic responses. No significant differences were observed between the three experimental conditions, however, suggesting that neither sucrose and nor NNS alter stress-induced stimulation of SNS.

Validity of acute stress procedures

Mental stress elicited hemodynamic responses similar to those reported by other studies published in the literature, including increases of heart rate, mean arterial pressure, and cardiac output, and either no change^{22,23} or a slight decrease^{17,24–26} of SVR. Experimental studies have further demonstrated that the effects of mental stress on cardiac output and SVR were in part mediated by a β-adrenergic, nitric oxide dependent vasodilation in skeletal muscle²⁷.



CPT also elicited hemodynamic responses similar to those reported in the literature, i.e., significant increases of SVR and heart rate, and mean arterial pressure, without any change in cardiac output^{18,28}.

Effect of sucrose and NNS on hemodynamic responses

As compared to Water, Sucrose, and NNS did not change any of the hemodynamic parameters which were monitored during acute mental stress and CPT. This is indirect evidence that sweeteners, whether containing calories or not, did not alter the sympathetic activation of heart rate during acute mental stress and CPT, did not enhance cardiac muscle contraction strength, and did not induce peripheral (muscle) vasodilation during acute mental stress or peripheral vasoconstriction during CPT. This observation appears at odds with several other studies, however. In human newborns, sucrose ingestion before painful procedures (e.g., heel prick), has indeed been associated with reduced heart rate^{8,9}, as well as alleviation of several pain indicators^{29,30}. These effects were reported when sucrose was intraorally delivered, but not after intragastric administration, suggesting that they were linked to taste-related mechanisms³¹. This observation was further supported by other pediatric studies showing that pain indicators were effectively reduced with solutions containing sucrose and aspartame, but not

polyose (a glucose polymer that is metabolized by humans, but that has a very low sweetness)³². The reasons for these discrepancies between children and adults remain unknown, but may be due to developmental changes in sweet taste sensitivity³³ or in actions of sweet taste receptors on cerebral neuronal circuits³⁴, leading to different effects on hemodynamic stress responses.

Practical implications

There is currently much concern that stress may be involved in the development of non-communicable diseases¹, but the responsible mechanisms remain debated. Among other hypotheses, it has been proposed that chronic stress may drive an overconsumption of sugar-rich foods² as a mean to alleviate stress-related neuroendocrine and hemodynamic responses^{7–10,12,15,16}. The present observations demonstrate that limited and repeated consumption of sucrose or NNS are both ineffective in modulating hemodynamic responses to two different standardized acute stress procedures. However, this study does by no means disprove the hypothesis that acute stress may promote the consumption of sweet or energy-dense foods through other unrelated mechanisms. This also do not challenge the concept that repeated acute stress exposure may contribute to the pathogenesis of

non-communicable diseases by increasing mean blood pressure, altering myocardial perfusion^{5,6}, or increasing cortisol secretion⁴, which may in the long term lead to vascular damages and metabolic dysfunction.

Limitations

This study has some limitations that need to be addressed. First, we investigated the effects of acute stress procedures on hemodynamic parameters, but we did not directly assess SNS activity by muscle sympathetic nerve activity or norepinephrine-spillover measurements, nor the activity of the hypothalamic-pituitary-adrenal axis. Second, we aimed at designing this study with the highest ecological validity, and therefore asked participants to swallow the test drinks after their mouth rinses. As a consequence, we cannot discard that small changes in insulin concentrations induced by glucose metabolism may have altered hemodynamic responses through its vasodilatory properties^{21,35}. We can also not rule out that the hemodynamic responses to CPT may have been mitigated by an unintentional performance of a Valsalva maneuver³⁶. Finally, this study was conducted on young, healthy women, and these results cannot be extrapolated to obese individuals or to men, who showed substantial differences in hemodynamic stress responses^{19,37}.

Conclusion

In summary, these results demonstrate that consumption of drinks sweetened with sucrose or NNS do not alter hemodynamic responses to standardized acute stress protocols.

Acknowledgements

This project was funded by a research grant to Prof. Luc Tappy from Swiss National Science Foundation, Bern, Switzerland (grant no. 320030_169206).

Author contributions

J.C., L.B., R.R., P.S., and L.T. designed the study; J.C., L.B., R.R., K.S., and C.C. recruited participants and performed functional evaluations; J.C., N.S., and L.T. analyzed the data; J.C. and L.T. wrote the paper; L.T. had primary responsibility for final content. All authors read, commented on, and approved the paper.

Conflict of interest

L.T. has previously received research support and speaker fees from Soremartec Italia, Srl for research unrelated to this article, speaker fees from Nestlé AG, Switzerland, and the Gatorade Sport Science Institute, USA, and consultant fees from Takeda Pharma, USA. The remaining authors declare that they have no conflict of interest.

Publisher's note

Springer Nature remains neutral with regard to jurisdictional claims in published maps and institutional affiliations.

Received: 20 March 2019 Revised: 6 December 2019 Accepted: 17 December 2019

Published online: 02 January 2020

References

- Chandola, T., Brunner, E. & Marmot, M. Chronic stress at work and the metabolic syndrome: prospective study. *BMJ*. **332**, 521–525 (2006).
- Ulrich-Lai, Y. M., Fulton, S., Wilson, M., Petrovich, G. & Rinaman, L. Stress exposure, food intake and emotional state. *Stress* **18**, 381–399 (2015).
- Epel, E. S. et al. Stress and body shape: stress-induced cortisol secretion is consistently greater among women with central fat. *Psychosom. Med.* **62**, 623–632 (2000).
- Björntorp, P. The regulation of adipose tissue distribution in humans. *Int. J. Obes. Relat. Metab. Disord.* **20**, 291–302 (1996).
- Dimsdale, J. E. Psychological stress and cardiovascular disease. *J. Am. Coll. Cardiol.* **51**, 1237–1246 (2008).
- Hammadah, M. et al. Hemodynamic, catecholamine, vasomotor and vascular responses: determinants of myocardial ischemia during mental stress. *Int. J. Cardiol.* **243**, 47–53 (2017).
- Ulrich-Lai, Y. M. et al. Pleasurable behaviors reduce stress via brain reward pathways. *Proc. Natl Acad. Sci. USA* **107**, 20529–20534 (2010).
- Bucher, H. U. et al. Sucrose reduces pain reaction to heel lancing in preterm infants: a placebo-controlled, randomized and masked study. *Pediatr. Res.* **38**, 332–335 (1995).
- Acharya, A. B., Annamali, S., Taub, N. A. & Field, D. Oral sucrose analgesia for preterm infant venepuncture. *Arch. Dis. Child Fetal Neonatal Edn.* **89**, F17–F18 (2004).
- Adam, T. C. & Epel, E. S. Stress, eating and the reward system. *Physiol. Behav.* **91**, 449–458 (2007).
- Lemmens, S. G., Rutters, F., Born, J. M. & Westterterp-Plantenga, M. S. Stress augments food 'wanting' and energy intake in visceral overweight subjects in the absence of hunger. *Physiol. Behav.* **103**, 157–163 (2011).
- Ulrich-Lai, Y. M. et al. Daily limited access to sweetened drink attenuates hypothalamic-pituitary-adrenocortical axis stress responses. *Endocrinology* **148**, 1823–1834 (2007).
- Drolet, G. et al. Role of endogenous opioid system in the regulation of the stress response. *Prog. Neuropsychopharmacol. Biol. Psychiatry* **25**, 729–741 (2001).
- Kelley, A. E. et al. Opioid modulation of taste hedonics within the ventral striatum. *Physiol. Behav.* **76**, 365–377 (2002).
- Laugero, K. D., Bell, M. E., Bhatnagar, S., Soriano, L. & Dallman, M. F. Sucrose ingestion normalizes central expression of corticotropin-releasing-factor messenger ribonucleic acid and energy balance in adrenalectomized rats: a glucocorticoid-metabolic-brain axis? *Endocrinology* **142**, 2796–2804 (2001).
- Tryon, M. S. et al. Excessive sugar consumption may be a difficult habit to break: a view from the brain and body. *J. Clin. Endocrinol. Metab.* **100**, jc20144353 (2015).
- Carter, J. R., Kupiers, N. T. & Ray, C. A. Neurovascular responses to mental stress. *J. Physiol.* **564**, 321–327 (2005).
- Mourrot, L., Bouhaddi, M. & Regnard, J. Effects of the cold pressor test on cardiac autonomic control in normal subjects. *Physiol. Res.* **58**, 83–91 (2009).
- Seematter, G. et al. Effects of mental stress on insulin-mediated glucose metabolism and energy expenditure in lean and obese women. *Am. J. Physiol. Endocrinol. Metab.* **279**, E799–E805 (2000).
- Ordoñez, E. Y., Rodil, R., Quintana, J. B. & Cela, R. Determination of artificial sweeteners in beverages with green mobile phases and high temperature liquid chromatography-tandem mass spectrometry. *Food Chem.* **169**, 162–168 (2015).
- Grasser, E. K., Dulloo, A. & Montani, J. P. Cardiovascular responses to the ingestion of sugary drinks using a randomised cross-over study design: Does glucose attenuate the blood pressure-elevating effect of fructose? *Br. J. Nutr.* **112**, 183–192 (2014).
- Paine, N. J., Ring, C., Bosch, J. A., McIntyre, D. & Veldhuijzen van Zanten, J. J. C. S. The effect of acute mental stress on limb vasodilation is unrelated to total peripheral resistance. *Psychophysiology* **50**, 680–690 (2013).
- Tsai, P.-S., Yucha, C. B., Nichols, W. W. & Yarandi, H. Hemodynamics and arterial properties in response to mental stress in individuals with mild hypertension. *Psychosom. Med.* **65**, 613–619 (2003).
- Spence, J. D. et al. Hemodynamic and endocrine effects of mental stress in untreated borderline hypertension. *Am. J. Hypertens.* **3**, 859–862 (1990).

25. Battilana, P., Seematter, G., Schneiter, P., Jequier, E. & Tappy, L. Effects of free fatty acids on insulin sensitivity and hemodynamics during mental stress. *J. Clin. Endocrinol. Metab.* **86**, 124–128 (2001).
26. West, S. G. et al. Effects of diets high in walnuts and flax oil on hemodynamic responses to stress and vascular endothelial function. *J. Am. Coll. Nutr.* **29**, 595–603 (2010).
27. Dietz, N. M. et al. Nitric oxide contributes to the rise in forearm blood flow during mental stress in humans. *J. Physiol.* **480**(Pt 2), 361–368 (1994).
28. Hilz, M. J., Dütsch, M. Quantitative studies of autonomic function. *Am. Assoc. Electrodiagnost. Med.* **33**, 6–20 (2006).
29. Blass, E. M. & Watt, L. B. Suckling- and sucrose-induced analgesia in human newborns. *Pain* **83**, 611–623 (1999).
30. Haouari, N., Wood, C., Griffiths, G. & Levene, M. The analgesic effect of sucrose in full term infants: a randomised controlled trial. *BMJ.* **310**, 1498–1500 (1995).
31. Ramenghi, L. A., Evans, D. J. & Levene, M. I. "Sucrose analgesia": absorptive mechanism or taste perception? *Arch. Dis. Child Fetal Neonatal Edn.* **80**, F146–F147 (1999).
32. Barr, R. G. et al. The response of crying newborns to sucrose: is it a "sweetness" effect? *Physiol. Behav.* **66**, 409–417 (1999).
33. Segovia, C., Hutchinson, I., Laing, D. G. & Jinks, A. L. A quantitative study of fungiform papillae and taste pore density in adults and children. *Brain Res. Dev. Brain Res.* **138**, 135–146 (2002).
34. Jacobson, A., Green, E. & Murphy, C. Age-related functional changes in gustatory and reward processing regions: an fMRI study. *NeuroImage* **53**, 602–610 (2010).
35. Jern, S. Effects of acute carbohydrate administration on central and peripheral hemodynamic responses to mental stress. *Hypertension* **18**, 790–797 (1991).
36. Victor, R. G., Leimbach, W. N., Seals, D. R., Wallin, B. G. & Mark, A. L. Effects of the cold pressor test on muscle sympathetic nerve activity in humans. *Hypertension* **9**, 429–436 (1987).
37. Carter, J. R. & Ray, C. A. Sympathetic neural responses to mental stress: responders, nonresponders and sex differences. *Am. J. Physiol. Heart Circ. Physiol.* **296**, H847–H853 (2009).