










CORRECTION



Correction to: Human antimicrobial peptide LL-37 contributes to Alzheimer's disease progression

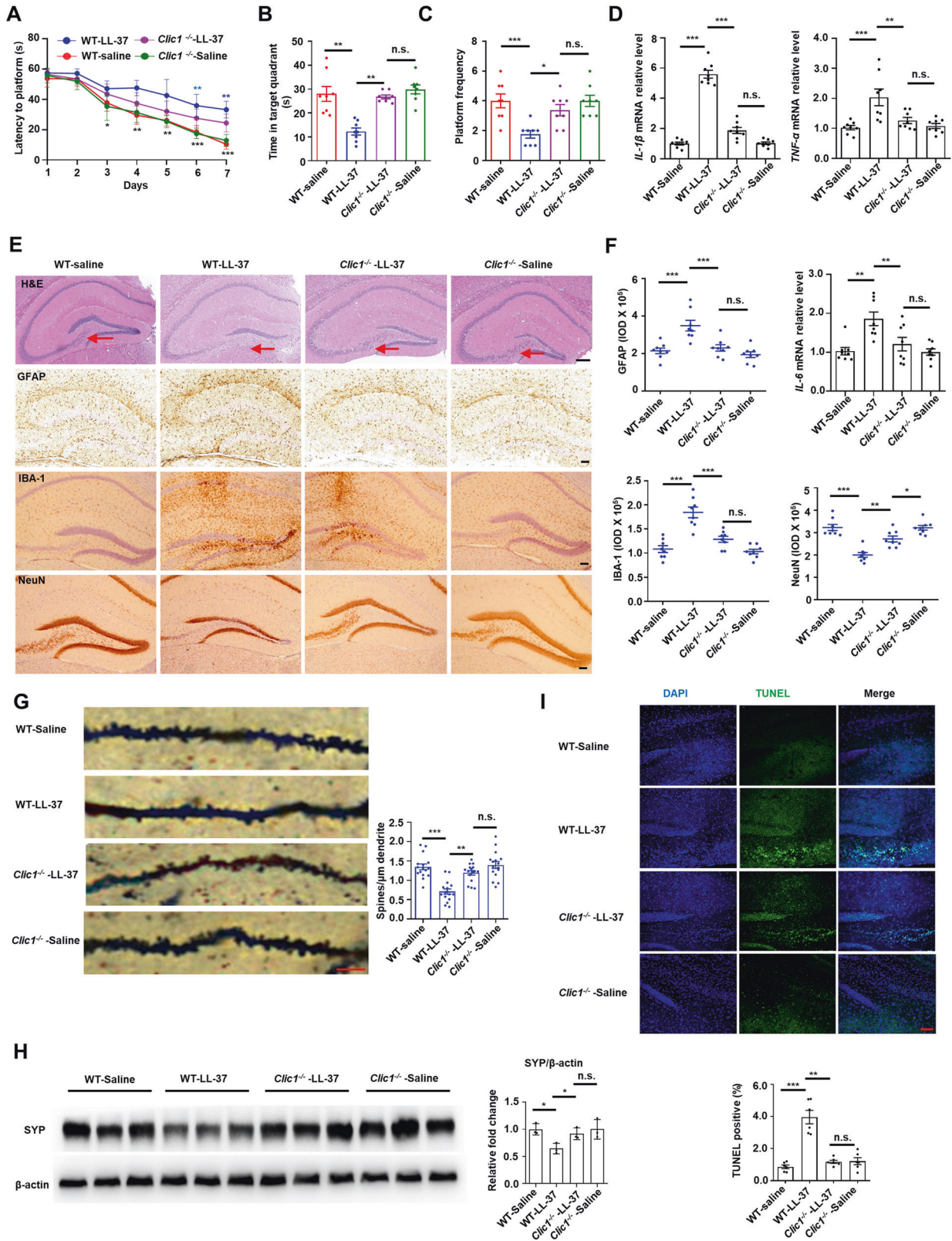
Xue Chen , Suixin Deng , Wenchao Wang , Stefania Castiglione , Zilei Duan , Lei Luo, Francesca Cianci, Xiaoxue Zhang, Jianglei Xu, Hao Li, Jizong Zhao, Peter Muiruri Kamau, Zhiye Zhang, James Mwangi, Jiali Li, Yousheng Shu , Xintian Hu , Michele Mazzanti  and Ren Lai 

© The Author(s), under exclusive licence to Springer Nature Limited 2023

Molecular Psychiatry (2024) 29:54–55; <https://doi.org/10.1038/s41380-023-02053-8>

Correction to: *Molecular Psychiatry* <https://doi.org/10.1038/s41380-022-01790-6>, published online 22 September 2022

In the original version of this article, we found that the incorrect Golgi-Cox staining image of *Clic1^{-/-}*-LL-37 group was in Figure 4G due to a data processing error. It has now been replaced. We are sorry for this oversight.



The original article has been corrected.