

CORRECTION



Correction: The function of integrin-linked kinase in normal and activated stellate cells

Mahnoush S. Shafiei and Don C. Rockey

© The Author(s), under exclusive licence to United States and Canadian Academy of Pathology 2021

Laboratory Investigation (2022) 102:112–114; <https://doi.org/10.1038/s41374-021-00659-6>Correction to: *Laboratory Investigation* <https://doi.org/10.1038/labinvest.2011.155>

The original version of this article unfortunately contained a mistake. Since the publication of the article the authors noticed

errors in the b-actin lanes of figures 5C, 6B/D, and 7C/D in this article. In the process of figure assembly, original images were inadvertently mislabeled and used incorrectly. The revised figures can be found below. The authors apologize for the errors.

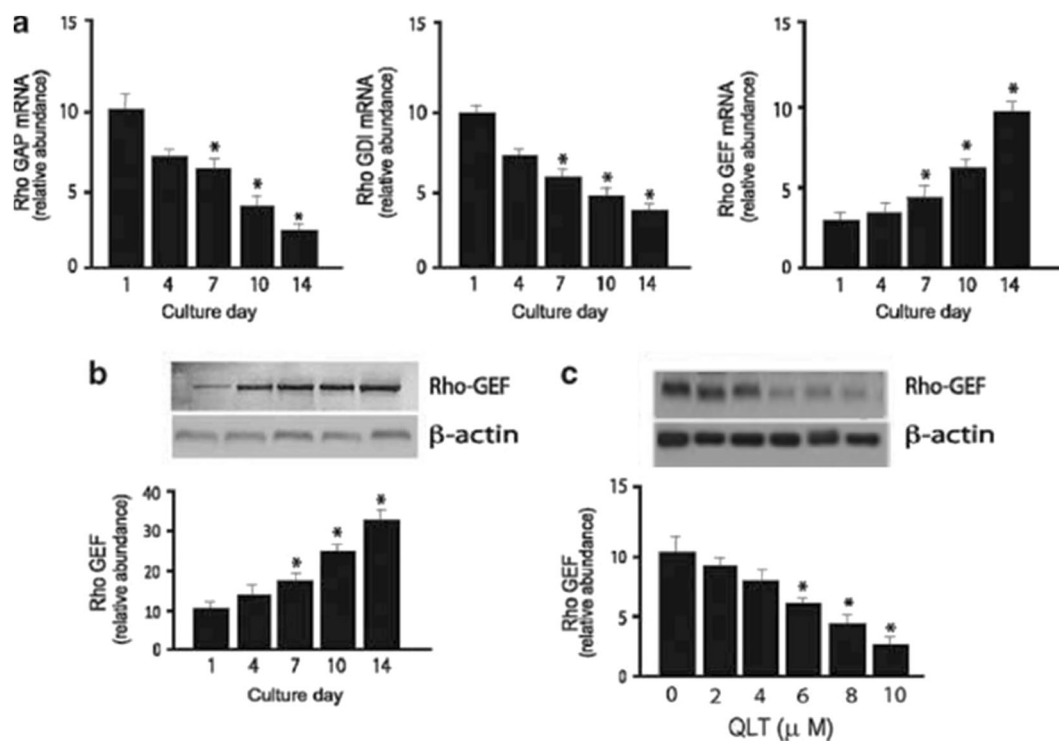


Fig. 1 ■

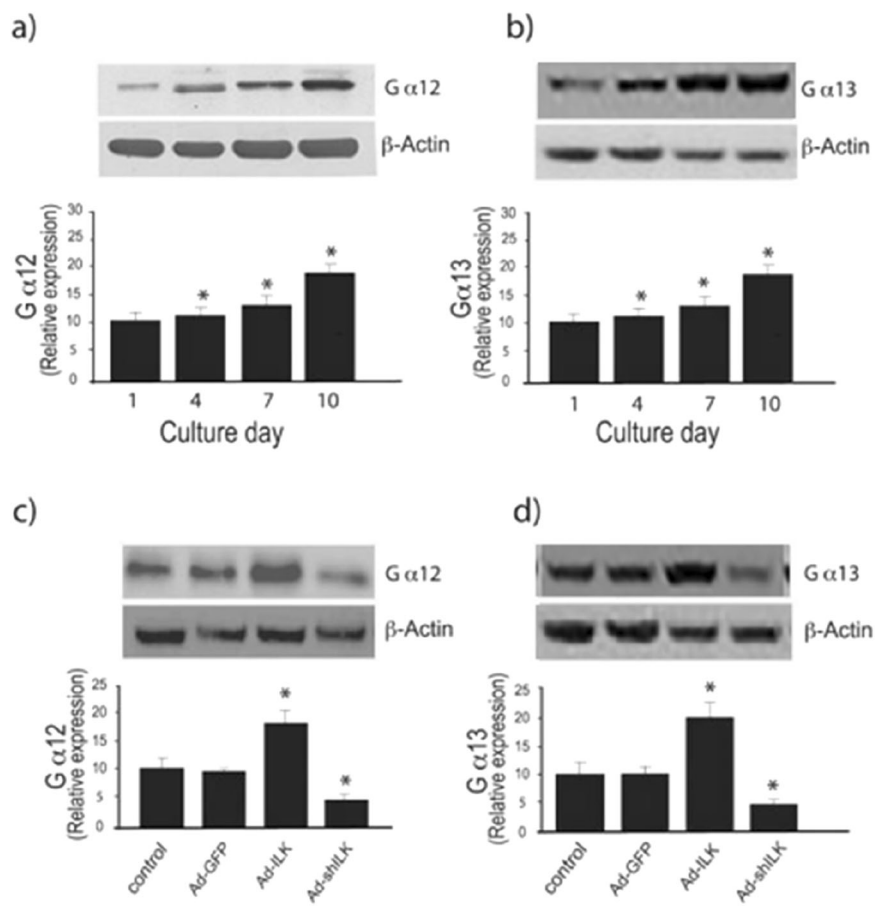


Fig. 2 ■

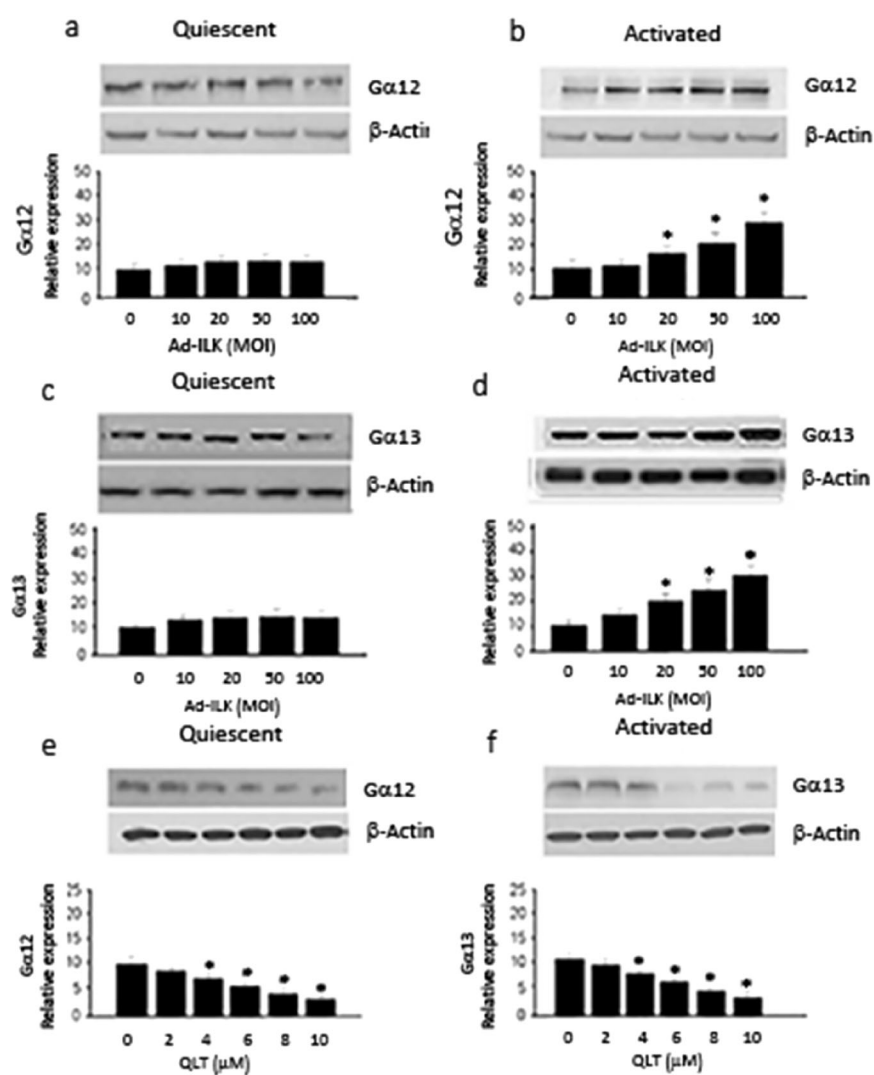


Fig. 3 ■