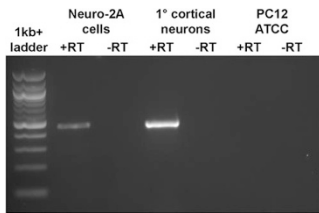
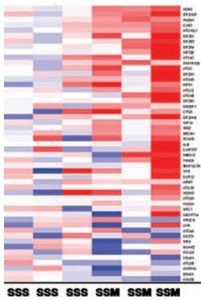


## EDITOR'S FOCUS



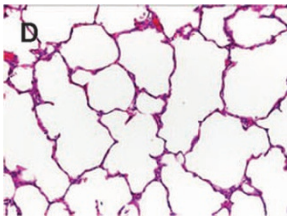
The effects of Nectin, a ligand of neurotrophin receptors, on the susceptibility of neuroblastoma cells to oxidative stress appear to be modified by the cellular p75NTR:TrkA ratio.

**See page 279**



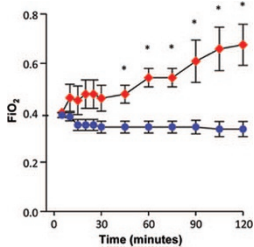
In newborn mice, stress affected hippocampal gene expression. Morphine administration modified this effect, while influencing genes not affected by stress.

**See page 285**



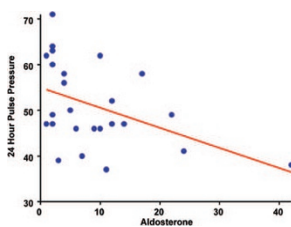
Human hIL-1 $\beta$  overexpression in mice during the saccular stage of lung development might be sufficient to cause lung abnormalities similar to bronchopulmonary dysplasia.

**See page 312**



Adjusted positive end-expiratory pressure during high frequency jet ventilation seems to improve oxygenation and lung compliance in preterm lambs and to reduce ventilator requirements despite reducing pulmonary perfusion.

**See page 319**



Plasma renin activity and aldosterone levels are shown to be inversely related to 24-hour blood pressure in obese adolescents.

**See page 336**



In a case control study, children with Rett syndrome sustained more low-energy fractures than controls, while overall fracture incidence was not increased.

**See page 359**