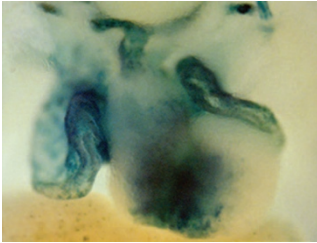
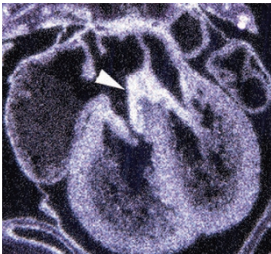


EDITOR'S FOCUS



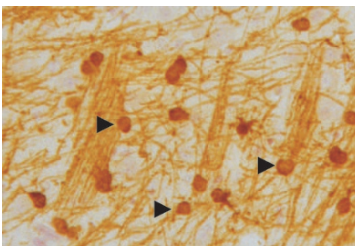
Using the *Zic3* mouse model of X-linked human heterotaxy, conduction system abnormalities correlated with the severity and location of associated structural cardiac disease identifiable early in development.

See page 275



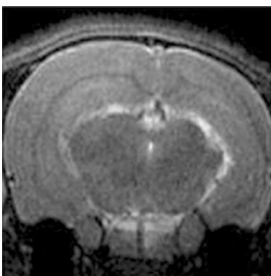
Non-synonymous *GATA6* sequence variants are infrequently found in individuals with congenital heart disease.

See page 281



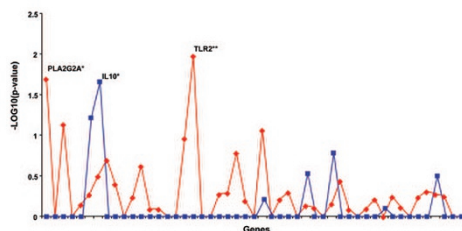
Ibuprofen treatment for patent ductus arteriosus closure in the preterm baboon neonate did not alter brain growth and development or increase neuropathology.

See page 298



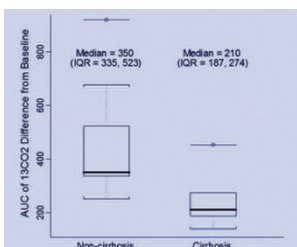
Neither reducing the target temperature nor prolonging the duration further improved ¹H-magnetic resonance spectroscopy, T2-weighted MRI and certain neurobehavioral outcomes in post-ischemic hypothermia in neonatal rats.

See page 303



Allelic variants in *PLA2G2A* and *TLR2* were associated with Gram-positive infections and *IL10* was associated with Gram-negative infections in preterm infants, suggesting a role in moderating the predisposition to sepsis.

See page 323



Serial breath sampling for ¹³CO₂ following the intravenous administration of [¹³C]-methionine provides a useful, safe and potentially clinically relevant evaluation of hepatic function in pediatric intestinal, failure-associated, liver disease.

See page 349