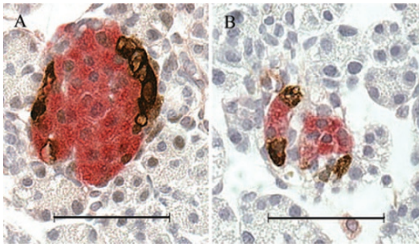


EDITOR'S FOCUS



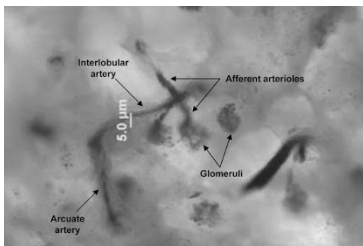
Neonatal streptozotocin treatment of mice born to control mothers revealed replaced pancreatic beta cell mass by day 30 that was not sustained. In contrast offspring exposed antenatally to a low protein environment demonstrated a limited capacity for recovery of the pancreatic beta cell mass.

See page 16



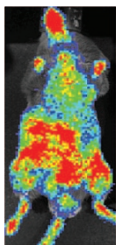
Gastroschisis-like abdominal wall defect observed in aortic carboxypeptidase-like protein null mice is associated with defect in neuromuscular development that is restricted to the eviscerated intestine.

See page 23



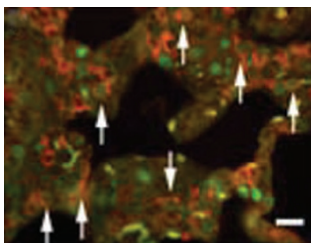
Angiotensin II regulates neuronal and endothelial nitric oxide synthase (NOS) expression and NOS activity in afferent arterioles of the developing porcine kidney via AT1 and AT2 receptors.

See page 29



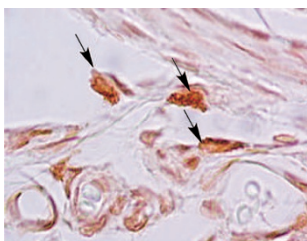
Regenerated bone marrow on the scaffold is capable of supporting and delivering hematopoietic stem cells (HSCs) to native murine bone marrow in-vivo, thereby serving as a portable source of HSCs.

See page 35



FasL signaling has dual timing-dependent effects of pro-apoptosis in antenatal and pro-proliferative in postnatal periods on post-canalicular type II cell kinetics.

See page 57



Hyperoxia-induced airway hyper-reactivity in neonatal rats is mediated partly via mast cells. Both cromolyn and imatinib blocked mast cell accumulation in airways.

See page 70