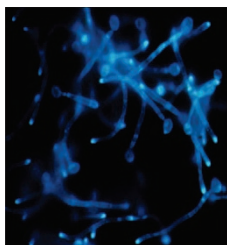
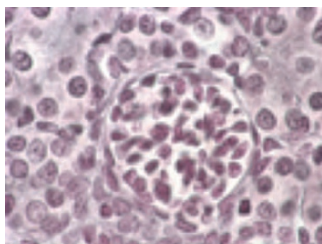


EDITOR'S FOCUS



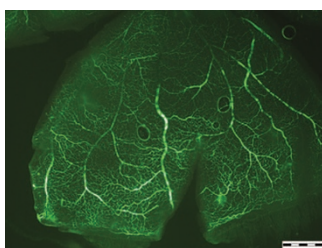
Simvastatin interferes with the biosynthesis of ergosterol of the yeast cell membrane thereby inhibiting biofilm formation by *Candida albicans* seen in bloodstream isolates.

See page 600



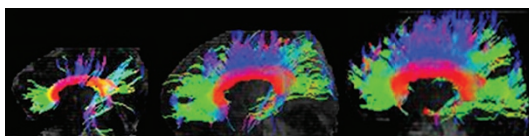
Iron deficiency anemia reduced glomerular density and surface area with fibrosis. Provision of enteral iron in postnatal rats rescued renal growth and development supporting a critical role for iron in late nephrogenesis.

See page 619



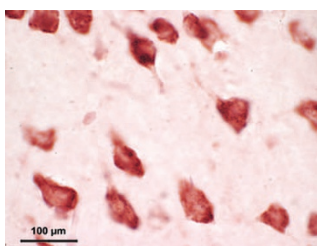
High dose treatment with recombinant erythropoietin may protect against brain injury with minimal effect on retinopathy of prematurity produced in postnatal rats.

See page 625



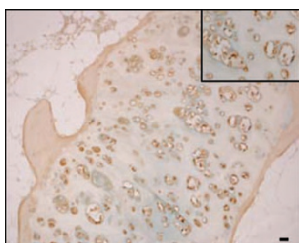
Diffusion tensor tractography provides a three dimensional view of individual white matter fiber tracts of the human brain and demonstrates age-related maturation.

See page 636



Poly (ADP-ribose) polymerase-1 (PARP-1) overactivation secondary to acute hypoglycemia-induced brain injury determines age- and region- specific vulnerability in postnatal rats.

See page 642



The process of human growth plate fusion that occurs at the end of puberty does not involve apoptosis or autophagy but rather hypoxia and necrosis.

See page 654