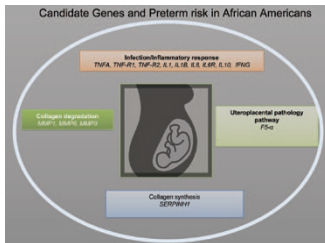
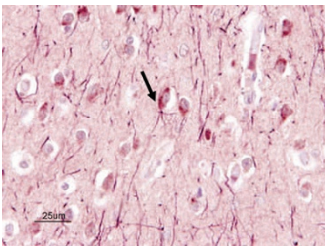


## EDITOR'S FOCUS



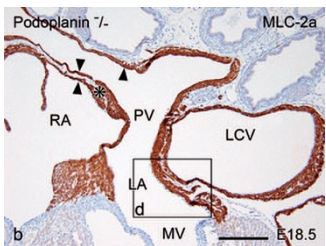
This review discusses genetic variation and its association with preterm births in African Americans and provides evidence that maternal and fetal genetic contributions partially account for this ethnic disparity.

**See page 1**



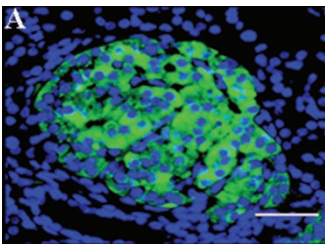
X-linked inhibitor of apoptosis protein, a potent suppressor of neuronal death, when expressed in the penumbra of subacute brain infarcts in human and in the one week old rat peri-infarct seven days following an ischemic injury, led to a reduction in activated caspase 3 supporting neuroprotection.

**See page 21**



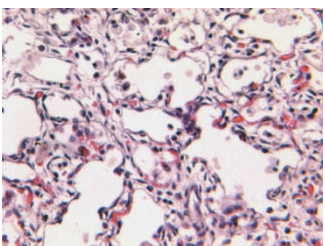
The myocardium and the smooth muscle cells of the pulmonary veins, dorsal atrial wall and atrial septum are derived from the posterior heart field under the regulation of podoplanin.

**See page 27**



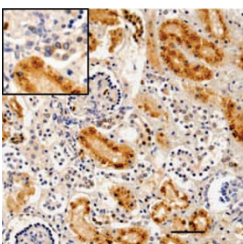
In the stomach of rat embryos and human neonates, prohormone convertase 1/3 mediates preproghrelin processing to ghrelin. In the pancreas, both prohormone convertases 1/3 and 2 play a role in preproghrelin processing.

**See page 39**



In preterm lambs, intratracheal instillation of lipopolysaccharide induced cytokine markers of lung injury or the systematic response were not decreased by CPAP alone when compared to conventional mechanical ventilation. *Figure courtesy of Vedang Londhe, University of California, Los Angeles.* See Commentary by Rimensberger, pp. 19–20.

**See page 67**



Immunolocalization of CD44 and osteopontin in developing human kidneys (18 to 40 weeks) demonstrated the former in ureteric buds and the latter in tubules. While osteopontin may not be important for early nephron formation it may be necessary for tubular differentiation.

**See page 79**