

EDITOR'S FOCUS



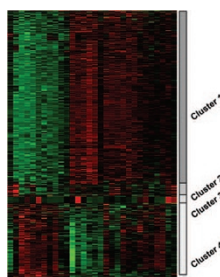
In-utero growth restriction increased aortic internal elastic lamina defects in both males and females early on persisting in males with advancing age. These defects are an early feature of atherosclerotic pathology forming by a blood pressure independent mechanism in rats.

See page 125



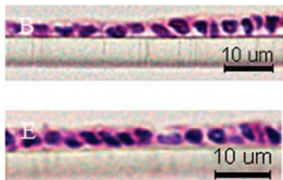
A 3-dimensional reconstruction of an anatomically accurate surrogate of the upper airways of a 32-week old premature infant has allowed *in-vitro* testing of various factors on aerosol delivery. See commentaries by Finlay, pp 121, and Bhandari, pp 123.

See page 141



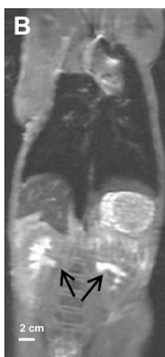
Differential gene expression in umbilical cord tissue as a function of maternal smoking revealed upregulation of genes mediating fetal growth, angiogenesis or development of connective tissue matrix while downregulating those important in immune and barrier protection.

See page 147



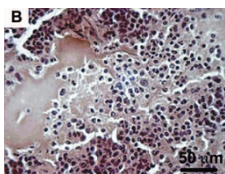
Sinulpeptide (KL₄) in a surfactant preparation led to decreased IL-6 secretion and absent matrix metalloproteinase 7 (MMP7) with less histological injury in Calu-3 monolayers. Whether these effects carry over *in-vivo* remains to be confirmed.

See page 154



Pulmonary aerosol delivery was effective in ventilated piglets with alveolar absorption reflected by contrast visualization in kidneys. See commentaries by Finlay, pp 121, and Bhandari, pp 123.

See page 159



Exogenous isoprenoids, geraniol, farnesol and geranylgeraniol, were effective in preventing inflammation in a mouse model of Mevalonate Kinase Deficiency (MKD). MKD is a rare disorder consisting of recurrent inflammatory episodes and in severe cases psychomotor delay. This study suggests a possible treatment of MKD in humans.

See page 177