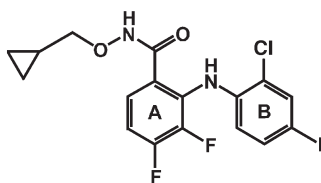


Corrigendum: Structures of human MAP kinase kinase 1 (MEK1) and MEK2 describe novel noncompetitive kinase inhibition

Jeffrey F Ohren, Huifen Chen, Alexander Pavlovsky, Christopher Whitehead, Erli Zhang, Peter Kuffa, Chunhong Yan, Patrick McConnell, Cindy Spessard, Craig Banotai, W Thomas Mueller, Amy Delaney, Charles Omer, Judith Sebolt-Leopold, David T Dudley, Iris K Leung, Cathlin Flamme, Joseph Warmus, Michael Kaufman, Stephen Barrett, Haile Teclé & Charles A Hasemann
Nat. Struct. Mol. Biol. **11**, 1192–1197 (2004).

A typographical error was inadvertently introduced in **Figure 1a**. The corrected chemical structure is shown below. The authors apologize for any inconvenience this may have caused.



PD184352