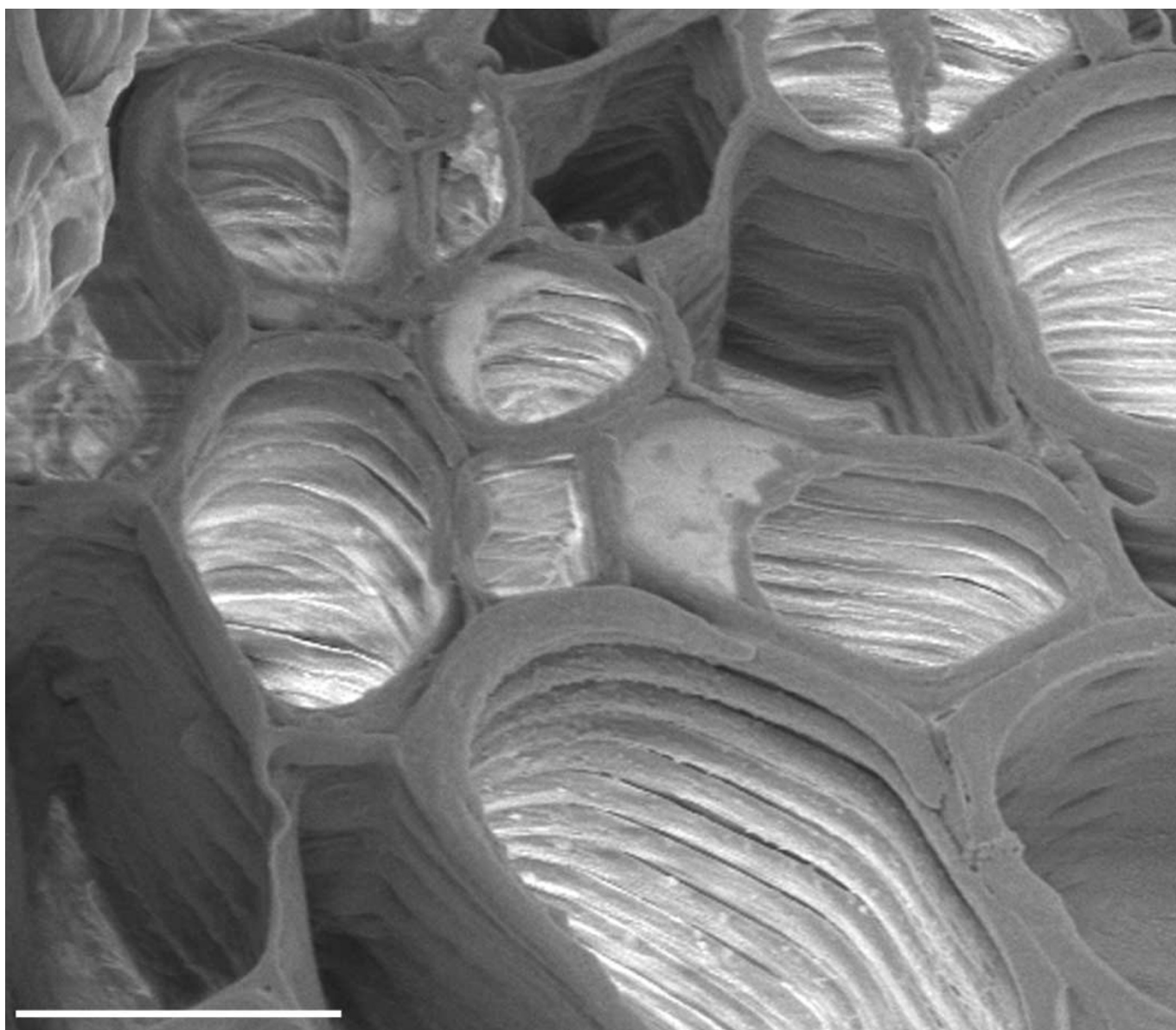


CELL OF THE MONTH



This month's winning image was submitted by Preeti Dahiya (John Innes Centre, UK (preeti.dahiya@bbsrc.ac.uk)). It shows xylem vessels from *Arabidopsis* floral stems.

The image was obtained using a scanning electron microscope (XL30 FEG, Philips). Bar, 10 μ m.

We are pleased to acknowledge the help of our two external advisors, Ariel Ruiz i Altaba (Developmental Genetics Program, New York Medical Center) and Lelio Orci (Department of Morphology, University Medical Center, Geneva).