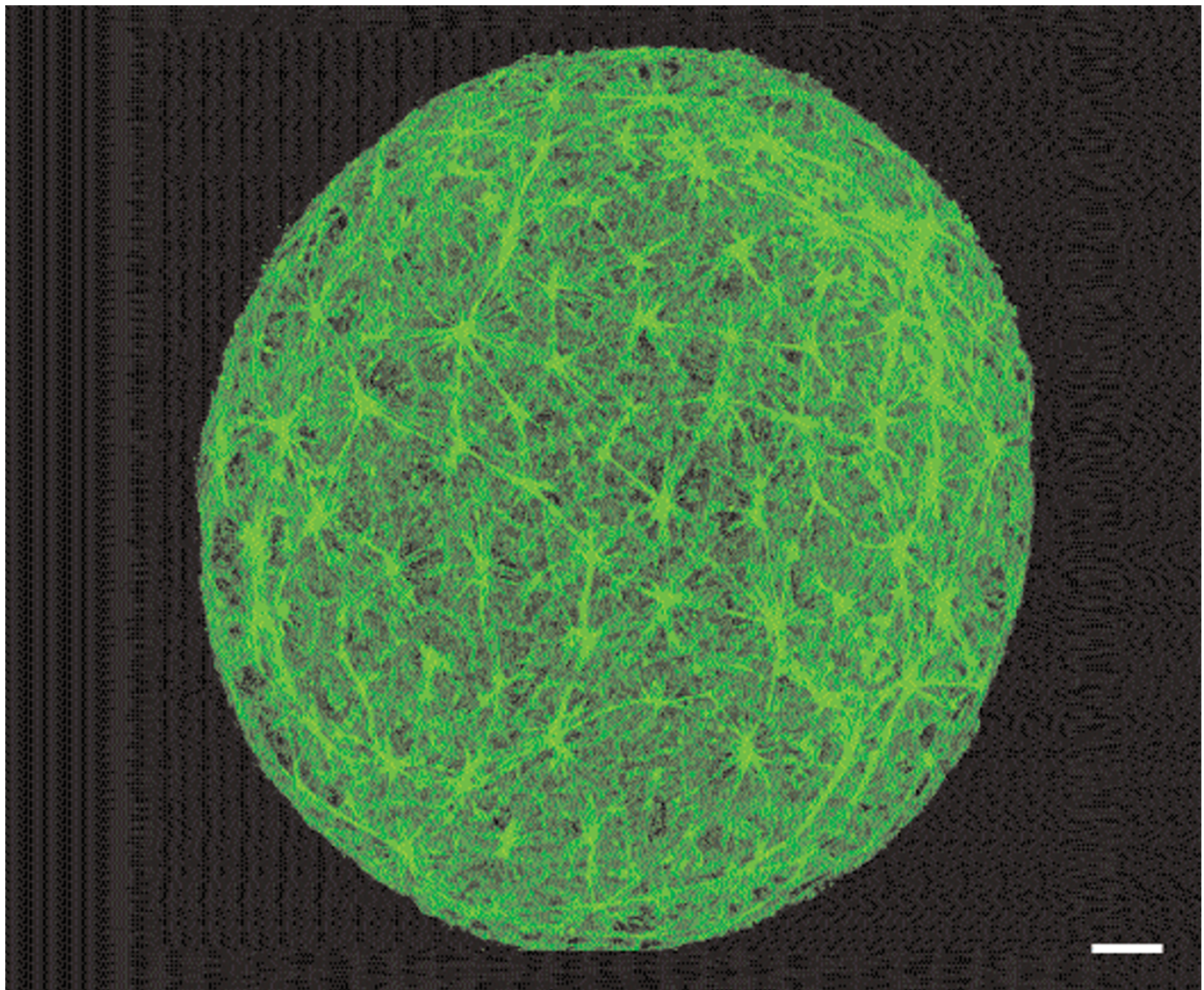


CELL OF THE MONTH



This month's winning image was submitted by Wei Yu (University of California (yuwei@itsa.ucsf.edu)). It shows actin stress fibres in a hollow cyst of Madin–Darby canine kidney (MDCK) cells.

Green fluorescence represents actin fibres in a hollow cyst of MDCK cells cultured in a collagen gel for 7–10 days. Actin was stained with Alexa Fluor 488-conjugated phalloidin. The image was obtained using a laser-scanning confocal microscope (LSM 510, Zeiss). Bar, 10 μm .

The winner would like to acknowledge the help of Keith Mostov (mostov@itsa.ucsf.edu) and Mirjam Zegers (zegers@itsa.ucsf.edu) (University of California).

We are pleased to acknowledge the help of our two external advisors, Ariel Ruiz i Altaba (Developmental Genetics Program, New York Medical Center) and Lelio Orci (Department of Morphology, University Medical Center, Geneva).