

FAAH^{-/-} Mice Display Differential Tolerance, Dependence, and Cannabinoid Receptor Adaptation after Δ^9 -Tetrahydrocannabinol and Anandamide Administration

Katherine W Falenski¹, Andrew J Thorpe¹, Joel E Schlosburg¹, Benjamin F Cravatt², Rehab A Abdullah¹, Tricia H Smith¹, Dana E Selley¹, Aron H Lichtman¹ and Laura J Sim-Selley*¹

¹Department of Pharmacology and Toxicology and Institute for Drug and Alcohol Studies, Virginia Commonwealth University, Richmond, VA, USA;

²The Skaggs Institute for Chemical Biology and Department of Cell Biology, The Scripps Research Institute, La Jolla, CA, USA

Repeated administration of Δ^9 -tetrahydrocannabinol (THC), the primary psychoactive constituent of *Cannabis sativa*, induces profound tolerance that correlates with desensitization and downregulation of CB₁ cannabinoid receptors in the CNS. However, the consequences of repeated administration of the endocannabinoid *N*-arachidonoyl ethanolamine (anandamide, AEA) on cannabinoid receptor regulation are unclear because of its rapid metabolism by fatty acid amide hydrolase (FAAH). FAAH^{-/-} mice dosed subchronically with equi-active maximally effective doses of AEA or THC displayed greater rightward shifts in THC dose–effect curves for antinociception, catalepsy, and hypothermia than in AEA dose–effect curves. Subchronic THC significantly attenuated agonist-stimulated [³⁵S]GTP γ S binding in brain and spinal cord, and reduced [³H]WIN55,212-2 binding in brain. Interestingly, AEA-treated FAAH^{-/-} mice showed less CB₁ receptor downregulation and desensitization than THC-treated mice. Experiments examining tolerance and cross-tolerance indicated that the behavioral effects of THC, a low efficacy CB₁ receptor agonist, were more sensitive to receptor loss than those of AEA, a higher efficacy agonist, suggesting that the expression of tolerance was more affected by the intrinsic activity of the ligand at testing than during subchronic treatment. In addition, the CB₁ receptor antagonist, rimonabant, precipitated a markedly reduced magnitude of withdrawal in FAAH^{-/-} mice treated subchronically with AEA compared with mice treated repeatedly with THC. The findings that repeated AEA administration produces lesser adaptive changes at the CB₁ receptor and has reduced dependence liability compared with THC suggest that pharmacotherapies targeting endocannabinoid catabolic enzymes are less likely to promote tolerance and dependence than direct acting CB₁ receptor agonists.

Neuropsychopharmacology (2010) **35**, 1775–1787; doi:10.1038/npp.2010.44; published online 31 March 2010

Keywords: desensitization; downregulation; [³⁵S]GTP γ S autoradiography; endocannabinoid; antinociception; G-protein

INTRODUCTION

The endocannabinoid system is comprised of cannabinoid CB₁ and CB₂ receptors and endogenous ligands, including *N*-arachidonoyl ethanolamine (anandamide, AEA) and 2-arachidonoyl glycerol (Howlett *et al*, 2002). Cannabinoids, including Δ^9 -tetrahydrocannabinol (THC), the primary psychoactive component of marijuana, produce a variety of pharmacological effects, including antinociception, motor disturbances, and hypothermia (Hollister, 1986; Compton *et al*, 1992), which correspond to the widespread distribution of CB₁ receptors in the CNS (Herkenham *et al*,

1991; Glass *et al*, 1997). AEA was initially shown to produce cannabinoid effects (Smith *et al*, 1994) that were short lived because of its rapid degradation (Willoughby *et al*, 1997). Initial observations on the function of AEA have been extended using genetically modified mice lacking fatty acid amide hydrolase (FAAH), the principal enzyme responsible for degradation of AEA and other fatty acid amides (Cravatt *et al*, 2001). Administration of AEA to FAAH^{-/-} mice produced antinociception, catalepsy, locomotor inhibition, and hypothermia that persisted 6–8 h. AEA-mediated effects were reversed by the CB₁ receptor antagonist SR141716A (rimonabant) (Cravatt *et al*, 2001) and dual FAAH^{-/-}/CB₁ receptor^{-/-} mice were impervious to the analgesic, cataleptic, and hypothermic effects of AEA (Wise *et al*, 2007), indicating that these effects are mediated through CB₁ receptors. In addition to this enhanced sensitivity to the pharmacological effects of exogenously administered AEA, FAAH^{-/-} mice were found to exhibit a hypoalgesic phenotype (Cravatt *et al*, 2001; Lichtman *et al*, 2004b).

*Correspondence: Dr LJ Sim-Selley, Department of Pharmacology and Toxicology, Box 980524, Virginia Commonwealth University, Richmond, VA 23298, USA, Tel: +1 804 827 0464, Fax: +1 804 828 1532, E-mail: ljsimsel@vcu.edu

Received 19 December 2009; revised 18 February 2010; accepted 1 March 2010

Importantly, FAAH^{-/-} mice exhibit normal CB₁ receptor expression despite constitutively elevated levels of endogenous fatty acid amides (Cravatt *et al*, 2001).

CB₁ receptors belong to the G-protein-coupled receptor superfamily and activate primarily G_{α_{i/o}}, resulting in inhibition of adenylyl cyclase, activation of A-type and inwardly rectifying potassium channels, inhibition of N- and P/Q-type calcium channels, and stimulation of MAP kinase (Howlett *et al*, 2002). Repeated exposure to THC or synthetic cannabinoid agonists (eg, WIN55,212-2, CP55,940) in rodents produces desensitization of cannabinoid-mediated G-protein activity and inhibition of adenylyl cyclase, as well as CB₁ receptor downregulation (Sim-Selley, 2003; Martin *et al*, 2004). Treatment paradigms that produce these cellular adaptations are also associated with the development of tolerance to *in vivo* cannabinoid-mediated effects (Martin *et al*, 2004; Lichtman and Martin, 2005). Rimonabant administration precipitates withdrawal effects in mice treated chronically with cannabinoid receptor agonists (Tsou *et al*, 1995; Cook *et al*, 1998) that is accompanied by increased cAMP in the cerebellum (Hutcheson *et al*, 1998; Rubino *et al*, 1998; Tzavara *et al*, 2000). The relevance of these adaptations is suggested by the findings that repeated THC use produces tolerance and dependence in human beings (Jones *et al*, 1976; Jones *et al*, 1981; Budney and Hughes, 2006) as well as CB₁ receptor downregulation in specific brain regions (Villares, 2007). It is not clear whether subchronic AEA administration regulates CB₁ receptors in a similar manner as THC and synthetic cannabinoids. AEA administration has been reported to produce an inconsistent and small degree of tolerance and dependence (Pertwee *et al*, 1993; Aceto *et al*, 1998), and treatment with AEA or the AEA analog methanandamide either reduced or did not alter levels of cannabinoid receptors and receptor-mediated G-protein activity (Romero *et al*, 1995; Romero *et al*, 1999; Rubino *et al*, 2000). Thus, results to date have been inconclusive and interpretation is complicated by the instability of AEA in the presence of endogenous FAAH (Willoughby *et al*, 1997).

FAAH^{-/-} mice provide a model in which to examine the effects of repeated AEA administration on CB₁ receptor regulation and *in vivo* activity. Earlier studies, while providing variable results, suggest that THC and AEA might differentially regulate CB₁ receptors in the CNS. To test this hypothesis, we investigated whether FAAH^{-/-} mice that were repeatedly administered equivalent maximally effective doses of AEA or THC would show differential tolerance to cannabinoid-mediated *in vivo* effects, signs of rimonabant-precipitated withdrawal, and receptor desensitization and downregulation.

MATERIALS AND METHODS

Subjects

The subjects were male C57Bl/6J mice (Jackson Laboratory, Bar Harbor, ME) as well as male and female FAAH^{-/-} and FAAH^{+/+} mice backcrossed for at least 13 generations onto a C57Bl/6J background. Subjects weighed between 20 and 30 g and were housed four mice per cage in a temperature-controlled (20–22°C) facility, with food and water available

ad libitum. All animal protocols were approved by the Virginia Commonwealth University Institutional Animal Care and Use Committee.

Drugs and Chemicals

[³⁵S]GTP_γS (1250 Ci/mmol) and [³H]WIN55,212-2 (52.2 Ci/mmol) were purchased from Perkin Elmer Life Sciences (Boston, MA). THC, rimonabant, and AEA for autoradiography were provided by the Drug Supply Program of the National Institute on Drug Abuse. Bovine serum albumin (BSA), GTP_γS, GDP, and WIN55,212-2 were purchased from Sigma Chemical Company (St Louis, MO). Econo-1 scintillation fluid was obtained from Fisher Scientific (Norcross, GA). All other chemicals were obtained from Sigma or Fisher. AEA for repeated dosing and *in vivo* testing were synthesized by the Cravatt laboratory.

Repeated Drug Administration

All subchronic dosing was administered through the subcutaneous route of administration given twice daily (0800 and 1600 hours) with vehicle (emulphor:ethanol:saline in a ratio of 1:1:18), THC (50 mg/kg), or AEA (50 mg/kg) on 5 consecutive days. On the 6th day, only the 0800 hours injection was administered. These doses of AEA and THC were selected because in preliminary experiments (data not shown) they produced maximal antinociceptive effects in control mice (also see Figures 1, top panel and Figure 3, top panel).

In Vivo Measures

Nociceptive behavior was assessed in the tail withdrawal test using a 52°C water bath, a temperature that does not produce FAAH^{-/-} phenotypic hypoalgesic responses (Cravatt *et al*, 2001). The tail withdrawal data were expressed as a percentage of maximal possible effect (%MPE = (withdrawal latency - baseline withdrawal) / (10 s - baseline withdrawal)). Body temperature was obtained by inserting a digital thermometer (Fisher Scientific, Pittsburgh, PA) 2 cm into the anus and recorded to the nearest 0.1°C. Catalepsy was scored as positive when mice maintained a rigid posture for 10 s in the bar test (Cravatt *et al*, 2001).

Cumulative Dose-Response Curves

Twenty-four hours after the final subchronic injection, a cumulative dosing regimen was used to determine the dose-response relationships for antinociception, hypothermia, and hypomotility. Subjects received increasing doses of THC or AEA every 40 min with end points assessed 30 min after each injection, as specified in the results. Several experiments were conducted that included control mice that received repeated vehicle injections every 40 min, with end points assessed 30 min to ensure that no vehicle effects occurred.

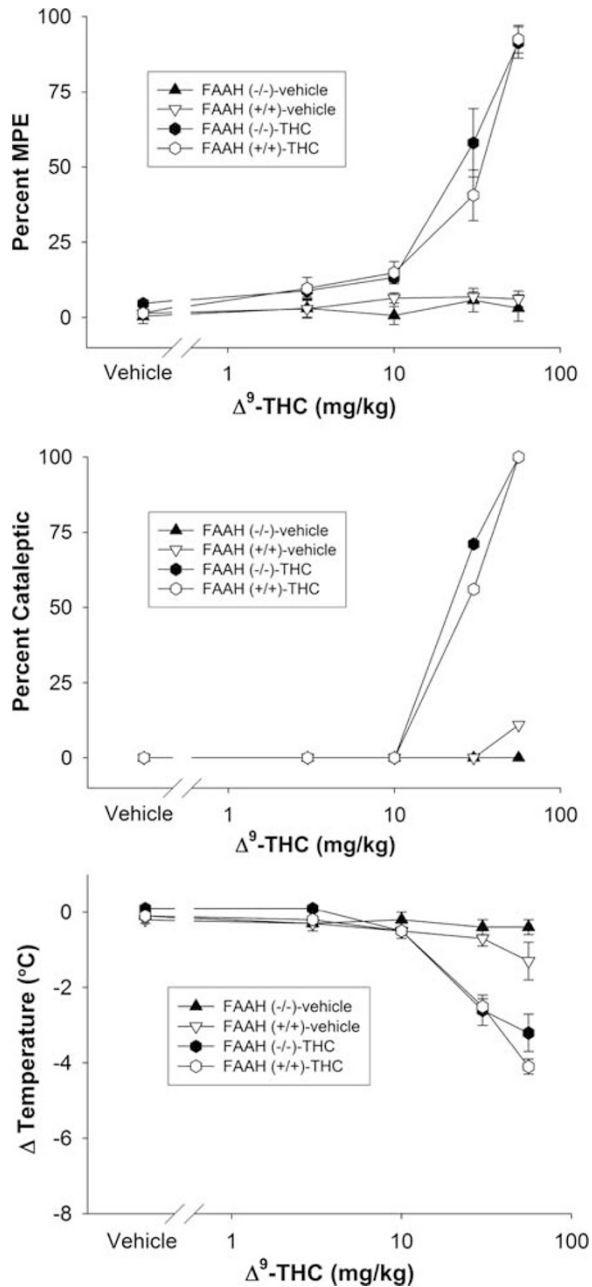


Figure 1 Cumulative dose–response curves of THC vs repeated vehicle injections in FAAH^{-/-} or FAAH^{+/+} mice in the tail immersion test for antinociception (top panel), bar test for catalepsy (center panel), or hypothermia (bottom panel). Data are presented as mean \pm SEM, $n = 6$ –8 mice/condition.

Rimonabant-Precipitated Withdrawal

Subjects ($n = 36$) were treated with vehicle, AEA, or THC according to the repeated administration schedule described above. On day 6, mice were injected with the final subchronic treatment, and placed in a Plexiglas observation chamber (21.5 \times 21.5 \times 15 cm); 30 min later, subjects were administered rimonabant (10 mg/kg; i.p.) and scored for paw tremors (shaking of one or both paws) and head shaking/twitching (minimum of two quick, successive head movements in a counterclockwise/clockwise manner and

righted to the original position). Mice were observed for 1 h and scored in 5-min bins, separated by 5-min break periods.

Comparison of THC Brain Levels Between Bolus and Cumulative Dosing Procedures

Acute THC brain and blood levels were determined 30 min after single bolus administration of 3, 10, or 30 mg/kg THC or 30 min after the final injection of cumulative dosing of 10, 30, or 56 mg/kg THC. The mice were decapitated 20 min after drug administration and the blood was collected in heparinized (Elkins-Sinn, Cherry Hill, NJ) tubes. The THC extraction procedure and quantification procedure were conducted as described earlier (Wilson *et al*, 2006). A total of 50 ng of deuterated THC (Radian Corporation, Austin, TX) was added to the blood sample, brain homogenate, and calibrators (blank mouse whole blood and homogenized brain) as an internal standard. After an equilibration period, 2.5 ml cold acetonitrile (HPLC grade, Fisher Scientific, Raleigh NC) was added drop-wise while vortexing. The samples were centrifuged at 2500 rpm for 15 min to pelletize solids and stored in a freezer (-20°C) overnight to separate the acetonitrile and aqueous layers. The acetonitrile layer was then removed and evaporated to dryness under nitrogen. The THC/deuterated THC was resolubilized in 0.1 ml methanol (HPLC grade, Fisher Scientific) and quantified through LC-MS (Quattro II). Ions analyzed in single ion monitoring mode were 315 and 118 for THC and deuterated THC, respectively. A calibration curve was constructed for each assay based on linear regression using the peak-area ratios of THC to deuterated THC of the extracted calibration samples.

Agonist-Stimulated [³⁵S]GTP γ S Autoradiography

Mice were treated subchronically with vehicle, AEA, or THC as described above. Twenty-four hours after the final injection, brains were removed and frozen in isopentane (-30°C). Coronal sections (20 μm) in regions of interest were cut on a cryostat (-20°C) and collected on subbed slides. Slides were desiccated overnight at 4°C and stored at -80°C . Assays were conducted as published (Sim-Selley and Martin, 2002). Slides were incubated in TME buffer (50 mM Tris-HCl, 3 mM MgCl₂, 0.2 mM EGTA, 100 mM NaCl) for 10 min, then transferred to TME buffer + 0.5% BSA containing 2 mM GDP and 10 mU/ml adenosine deaminase for 20 min. Sections were then incubated for 2 h in 0.04 nM [³⁵S]GTP γ S, 2 mM GDP, 10 mU/ml adenosine deaminase, and maximally effective concentrations of WIN55,212-2 (10 μM) or AEA (20 μM) in TME buffer + BSA at 25°C . Slides were rinsed in Tris buffer (2 \times 2 min at 4°C , 50 mM, pH 7.4) and ddH₂O (30 s, 4°C), dried, and placed in cassettes with ¹⁴C microscalers and Kodak Biomax MR film for 24 h.

[³H]WIN55,212-2 Autoradiography

[³H]WIN55,212-2 binding was conducted as published (Breivogel *et al*, 1999). Sections were collected as described above. Slides were incubated in assay buffer (20 mM HEPES, 1 mM MgCl₂, and 0.5% w/v BSA, pH 7.0) for 20 min at 30°C . Sections were then incubated in 1 nM [³H]WIN55,212-2 in

assay buffer (80 min, 30°C) in the absence or presence of 1 μ M unlabeled WIN55,212-2 to assess total and non-specific binding, respectively. Slides were washed in assay buffer (4 \times 10 min each, 25°C) and dipped in ddH₂O (4°C). Slides were dried and exposed to Kodak Biomax MS film for 6 weeks with ³H microscopies.

Agonist-Stimulated [³⁵S]GTP γ S Binding in Membranes

Assays were conducted as published earlier (Sim-Selley *et al*, 2006). Spinal cords were removed, rapidly frozen, and stored at -80°C. For each experiment, tissue was thawed and homogenized in membrane buffer (Tris-HCl, pH 7.4, 3 mM MgCl₂, and 1 mM EDTA). Homogenates were centrifuged at 50 000 g for 10 min at 4°C, the supernatant was discarded, and the pellet re-suspended in membrane buffer. Centrifugation was repeated, the pellet re-suspended in TME buffer, and protein concentration determined. Membranes were pretreated with adenosine deaminase (10 mU/ml) for 15 min at 30°C before assay. Membrane protein (10 μ g) was incubated in TME with 0.1% BSA, 30 μ M GDP, 0.1 nM [³⁵S]GTP γ S, and varying concentrations of WIN55,212-2 or AEA for 2 h at 30°C. Non-specific binding was determined with 10 μ M unlabeled GTP γ S and basal binding was determined in the absence of agonist. The incubation was terminated by rapid filtration through GF/B glass fiber filters and three rinses with ice-cold Tris-HCl, pH 7.4. Bound radioactivity was determined by liquid scintillation spectrophotometry after extraction of filters in ScintiSafe Econo-1 scintillation fluid.

Data Analysis

All *in vivo* data were analyzed using one- or two-way analyses of variance (ANOVA), followed by Tukey *post hoc* tests when appropriate. As no significant sex differences were observed in any of the studies, this factor was collapsed in all analyses. The *p*-values of <0.05 were considered significant. The ED₅₀ values with 95% confidence intervals (CI) were calculated using standard linear regression analysis of the dose-response curve. Potency ratios with 95% CI were calculated by comparing the potency between two treatments, as described by Colquhoun (1971). Treatments that had potency ratios that did not include a ratio of 1 in the 95% CI were considered significant.

Autoradiographic analysis was performed using NIH ImageJ software. Data are reported as mean \pm SEM of triplicate sections from 4 to 6 (study 1) or 8 to 12 (study 2) brains/group. Net [³⁵S]GTP γ S binding is defined as (agonist-stimulated [³⁵S]GTP γ S binding - basal [³⁵S]GTP γ S binding). Percent stimulation is defined as (net [³⁵S]GTP γ S binding/basal [³⁵S]GTP γ S binding) \times 100%. Specific [³H]WIN55,212-2 binding is defined as (total [³H]WIN55,212-2 binding - non-specific [³H]WIN55,212-2 binding). In study 1, a two-way ANOVA and *post hoc* tests were used to compare the three Dunnett's treatment groups (vehicle-, THC-, and AEA-treated) across genotype; in study 2, a two-way ANOVA examined an overall effect of treatment across brain region, whereas one-way ANOVAs (with *post hoc* Dunnett's tests) compared the FAAH^{-/-} treatment groups within each region. Concentration-effect

curves in membranes were fit by non-linear regression analysis to obtain *E*_{max} and EC₅₀ values using GraphPad Prism 4.0 software. The significance of concentration-effect curves was determined by two-way ANOVA; significant differences in *E*_{max} and EC₅₀ values were determined by one-way ANOVA with a *post hoc* Dunnett's test.

RESULTS

Behavioral Measures

Cumulative dosing of THC produces identical dose-response curves in naive FAAH^{-/-} and FAAH^{+/+} mice. In initial experiments, we evaluated the feasibility of evaluating the dose-response relationship of THC using a cumulative dosing regimen in which mice were dosed with increasing amounts of drug and tested repeatedly across the same session. The data presented in Table 1 compare the resulting blood and brain levels of THC between mice subjected to cumulative dosing and single bolus dosing. Both types of injection regimens led to equivalent levels of THC in both blood and brain, as indicated by a lack of significance between injection regimens. Next, we compared the dose-response relationship of THC after cumulative dosing between FAAH^{+/+} and FAAH^{-/-} mice. As previously reported using separate groups of mice (Cravatt *et al*, 2001), THC was equipotent and elicited similar dose-response profiles for antinociception (potency ratio (95% CI) values: 1.1 (0.8-1.5); Figure 1, top panel), catalepsy (1.1 (0.8-1.6); Figure 1, center panel), and hypothermia (0.8 (0.7-1.1); Figure 1, bottom panel) in both genotypes. Importantly, FAAH^{+/+} and FAAH^{-/-} mice given repeated vehicle injections did not display any alterations in any of the three dependent measures. To reduce the number of mice needed as well as the quantity of drugs required for the tolerance and dependence experiments, all dose-response relationships were assessed using a cumulative dosing regimen.

Evaluation of subchronic dosing of THC and AEA on the dose-response relationship of THC in FAAH^{-/-} and FAAH^{+/+} mice. Repeated administration of two daily injections of THC (50 mg/kg) for 5.5 days elicited profound tolerance to its antinociceptive (Figure 2, top panel), cataleptic (Figure 2, center panel), and hypothermic

Table 1 Comparison of Blood and Brain THC Levels Between Single Bolus and Cumulative Dosing in C57Bl/6j Mice

THC (mg/kg)	Blood (ng/ml)		Brain (ng/ml)	
	Single bolus	Cumulative	Single bolus	Cumulative
3	97 \pm 14	—	77 \pm 5	—
10	209 \pm 28	179 \pm 23	212 \pm 19	225 \pm 32
30	456 \pm 83	438 \pm 102	520 \pm 79	641 \pm 134
56	1054 \pm 184	1315 \pm 386	1072 \pm 156	1294 \pm 178

Values represent mean \pm SEM concentration of THC (*n* = 5-8 mice/group).

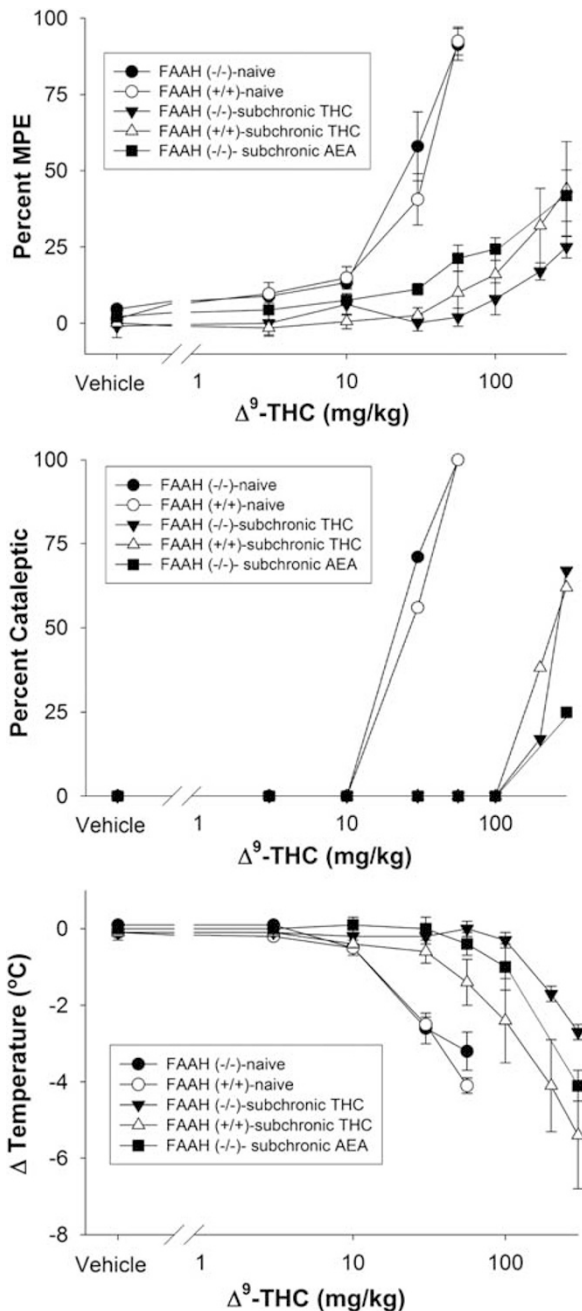


Figure 2 Cumulative dose–response curves of THC in $FAAH^{-/-}$ or $FAAH^{+/+}$ mice that were treated subchronically with either THC or AEA. Also included for comparison were naive $FAAH^{-/-}$ or $FAAH^{+/+}$ mice (data also presented in Figure 1). Subjects were evaluated in the tail immersion test for antinociception (top panel), bar test for catalepsy (center panel), or hypothermia (bottom panel). Data are presented as mean \pm SEM, $n = 6$ –8 mice/condition.

(Figure 2, bottom panel) effects in both $FAAH^{+/+}$ and $FAAH^{-/-}$ mice, accompanied by a decrease in efficacy for antinociception and catalepsy. Interestingly, repeated administration of THC led to increased tolerance to the hypothermic effects in $FAAH^{-/-}$ mice compared with $FAAH^{+/+}$ mice, as indicated by a significant interaction between genotype and dose ($F_{7,84} = 2.6$, $p < 0.05$), although no significant differences were found between the genotypes at any specific dose. In addition, $FAAH^{-/-}$ mice treated

subchronically with AEA displayed rightward shifts in THC dose–response curves for all three measures, with concomitant decreases in efficacy for antinociception and catalepsy. The potency of THC in $FAAH^{-/-}$ and $FAAH^{+/+}$ mice treated repeatedly with THC or vehicle, and THC potency after repeated AEA administration in $FAAH^{-/-}$ mice are represented in Table 2.

Evaluation of subchronic dosing of THC and AEA on the dose–response relationship of AEA in $FAAH^{-/-}$ mice. Repeated administration of two daily injections of AEA (50 mg/kg) for 5.5 days resulted in rightward shifts in the dose–response relationships to the antinociceptive (Figure 3, top panel), cataleptic (Figure 3, center panel), and hypothermic (Figure 3, bottom panel) effects of AEA in $FAAH^{-/-}$ mice. In addition, subchronic administration of THC led to cross-tolerance to the pharmacological effects of AEA. Interestingly, the apparent efficacy of AEA in eliciting catalepsy was profoundly decreased in $FAAH^{-/-}$ mice treated subchronically with THC. The potencies of AEA in $FAAH^{-/-}$ mice treated repeatedly with vehicle, AEA, or THC are presented in Table 3.

Dependence. Rimobant (Rim) precipitated a similar magnitude of withdrawal responses in $FAAH^{-/-}$ and $FAAH^{+/+}$ mice treated subchronically with THC (Figure 4). A two-way ANOVA, with genotype ($FAAH^{-/-}$ vs $FAAH^{+/+}$) and treatment (subchronic vehicle–challenge vehicle, subchronic vehicle–challenge rimobant, subchronic THC–challenge rimobant) as between subject factors, revealed main effects of treatment for both head twitches ($F_{2,29} = 48$, $p < 0.0001$) and paw flutters ($F_{2,29} = 65$, $p < 0.0001$). *Post hoc* analyses revealed that rimobant challenge elicited significant increases in both headshakes and paw tremors in mice treated with subchronic THC, but not subchronic vehicle. Interestingly rimobant challenge precipitated paw flutters in $FAAH^{-/-}$ mice treated subchronically with AEA (Figure 4, top panel; $t_{10} = 5.3$, $p = 0.001$), but produced no changes in the number of head twitches (Figure 4, bottom panel). In addition, the magnitude of the rimobant precipitated paw flutters after subchronic AEA administration was smaller than after subchronic THC (AEA mean \pm SEM = 74 ± 13 ; THC mean \pm SEM = 222 ± 41).

Agonist-Stimulated [35 S]GTP γ S Binding

Desensitization of cannabinoid-stimulated G-protein activity usually occurs after repeated cannabinoid treatment regimens that produce tolerance (Sim-Selley, 2003). Therefore, agonist-stimulated [35 S]GTP γ S binding was conducted to assess cannabinoid receptor-mediated G-protein activity between $FAAH^{+/+}$ and $FAAH^{-/-}$ mice treated repeatedly with vehicle, THC, or AEA in the representative regions of caudate putamen, hippocampus, and cerebellum. In these regions, WIN55,212-2-stimulated [35 S]GTP γ S binding was similar between the $FAAH^{+/+}$ and $FAAH^{-/-}$ genotypes in autoradiograms from vehicle-treated mice (Figure 5). Similarly, in both genotypes, WIN55,212-2-stimulated [35 S]GTP γ S binding in brains from THC-treated mice was visibly reduced, whereas activity in brains from AEA-treated mice appeared to be similar to vehicle-treated

Table 2 Comparison of THC Potency in FAAH^{-/-} vs FAAH^{+/+} Mice That Were Naive or Treated Repeatedly with THC, and FAAH^{-/-} Mice Treated Repeatedly with AEA

Subchronic treatment	Antinociception		Catalepsy		Hypothermia	
	-/-	+/+	-/-	+/+	-/-	+/+
Naive	22 (17–30)	19 (14–26)	21 (15–28)	18 (13–25)	22 (16–32)	18 (15–22)
THC	25 ± 4%MPE @ 300 mg/kg	44 ± 16%MPE @ 300 mg/kg	67% @ 300 mg/kg	62% @ 300 mg/kg	224 (190–266)	109 (62–190)
AEA	42 ± 8%MPE @ 300 mg/kg	n.d.	25% @ 300 mg/kg	n.d.	133 (106–166)	n.d.

Data represent ED₅₀ values (95% CI) or maximum effect ± SEM if efficacy < 70% (n.d. = not determined) and are represented in mg/kg.

animals. Densitometric analysis of caudate-putamen, hippocampus, and cerebellum (Figure 5) revealed that WIN55,212-2-stimulated [³⁵S]GTPγS binding did not differ between FAAH^{-/-} and FAAH^{+/+} mice for any treatment. Two-way ANOVAs revealed that THC treatment significantly reduced WIN55,212-2-stimulated [³⁵S]GTPγS binding across genotypes compared with appropriate vehicle control in all analyzed regions including caudate putamen ($F_{1,25} = 9.06$, $p < 0.01$), hippocampus ($F_{1,25} = 8.04$, $p < 0.01$), and cerebellum ($F_{1,25} = 5.35$, $p < 0.05$). In contrast, WIN55,212-2-stimulated [³⁵S]GTPγS binding after AEA treatment was not different from vehicle control in either FAAH^{+/+} or FAAH^{-/-} mice in any of the analyzed regions.

To investigate this finding further, FAAH^{-/-} mice received the same drug treatment regimens and then underwent a more extensive regional analysis. As WIN55,212-2-stimulated [³⁵S]GTPγS binding did not differ statistically between genotypes in any region, only FAAH^{-/-} mice, in which AEA would be stable, were used for this study. Representative autoradiograms illustrate WIN55,212-2-stimulated [³⁵S]GTPγS binding in the three treatment groups of FAAH^{-/-} mice at several coronal levels, including caudate-putamen, globus pallidus, periaqueductal gray, and cerebellum (Figure 6). Visual inspection revealed an obvious reduction in WIN55,212-2-stimulated [³⁵S]GTPγS binding in brains from THC-treated FAAH^{-/-} mice, whereas only a modest attenuation was noted in sections from AEA-treated FAAH^{-/-} mice. Densitometric analysis confirmed these observations (Table 4). As the magnitude of agonist-stimulated [³⁵S]GTPγS binding varied substantially between regions, separate one-way ANOVAs with appropriate *post hoc* Dunnett's tests were used to compare the three FAAH^{-/-} treatment groups within each brain region. Treatment of FAAH^{-/-} mice with THC significantly reduced WIN55,212-2-stimulated [³⁵S]GTPγS binding compared with vehicle-treated mice in all regions analyzed, including caudate-putamen, globus pallidus, hippocampus, substantia nigra, periaqueductal gray, and cerebellum (Table 4). The percent loss of WIN55,212-2-stimulated [³⁵S]GTPγS binding varied by region, with relatively less reduction in globus pallidus and substantia nigra and the greatest reduction in hippocampus (Table 4; Figures 6 and 7), as previously reported (Sim-Selley, 2003). In contrast to results in THC-treated mice, WIN55,212-2-stimulated [³⁵S]GTPγS binding did not significantly differ between AEA- and vehicle-treated FAAH^{-/-} mice in any region analyzed except cerebellum, although a modest

reduction was usually observed (Table 4). This was confirmed when a two-way ANOVA with region and treatment as factors revealed a significant overall effect of treatment ($F_{2,166} = 34.4$, $p < 0.001$), whereby AEA produced an overall intermediate effect that was significantly different than both vehicle- and THC-treated mice (*post hoc* Tukey test, $p < 0.05$). Assays were also conducted to examine AEA-stimulated [³⁵S]GTPγS binding (data not shown). AEA-stimulated [³⁵S]GTPγS binding in brains from vehicle-treated FAAH^{-/-} mice was approximately 50% less than produced by WIN55,212-2, consistent with reports that AEA is a partial agonist for G-protein activation (Breivogel *et al*, 1998). The results obtained using AEA-stimulated [³⁵S]GTPγS binding also revealed decreased cannabinoid-stimulated G-protein activity in brains from THC-treated mice, with significant reductions in globus pallidus, PAG, and cerebellum. These results indicate that subchronic treatment with THC produced significant CB₁ receptor desensitization in multiple brain regions of FAAH^{-/-} mice. In contrast, AEA treatment produced only a modest reduction in CB₁ receptor-mediated G-protein activity that was intermediate between that seen after subchronic vehicle or THC treatment, and not statistically different from vehicle in any region except cerebellum.

[³H]WIN55,212-2 Binding

Cannabinoid treatment also produces receptor downregulation in the brain after administration paradigms that produce desensitization and tolerance (Sim-Selley, 2003). Thus, CB₁ receptor binding was assessed in near-adjacent brain sections from FAAH^{-/-} mice treated as described above using [³H]WIN55,212-2. Visual inspection of brain sections revealed reduced [³H]WIN55,212-2 binding in brains from THC-treated mice, whereas binding in AEA-treated mice was only slightly reduced compared with vehicle-treated mice. Representative autoradiograms of [³H]WIN55,212-2 binding in comparison with WIN55,212-2-stimulated [³⁵S]GTPγS binding at the level of the substantia nigra and hippocampus are shown in Figure 7. Densitometric analysis of the autoradiograms confirmed these observations (Table 5). [³H]WIN55,212-2 binding was significantly reduced in brains from THC- compared with vehicle-treated mice in all regions examined (Table 5). These results are similar to those found using agonist-stimulated [³⁵S]GTPγS binding, indicating that the apparent desensitization that occurs in FAAH^{-/-} mice with repeated

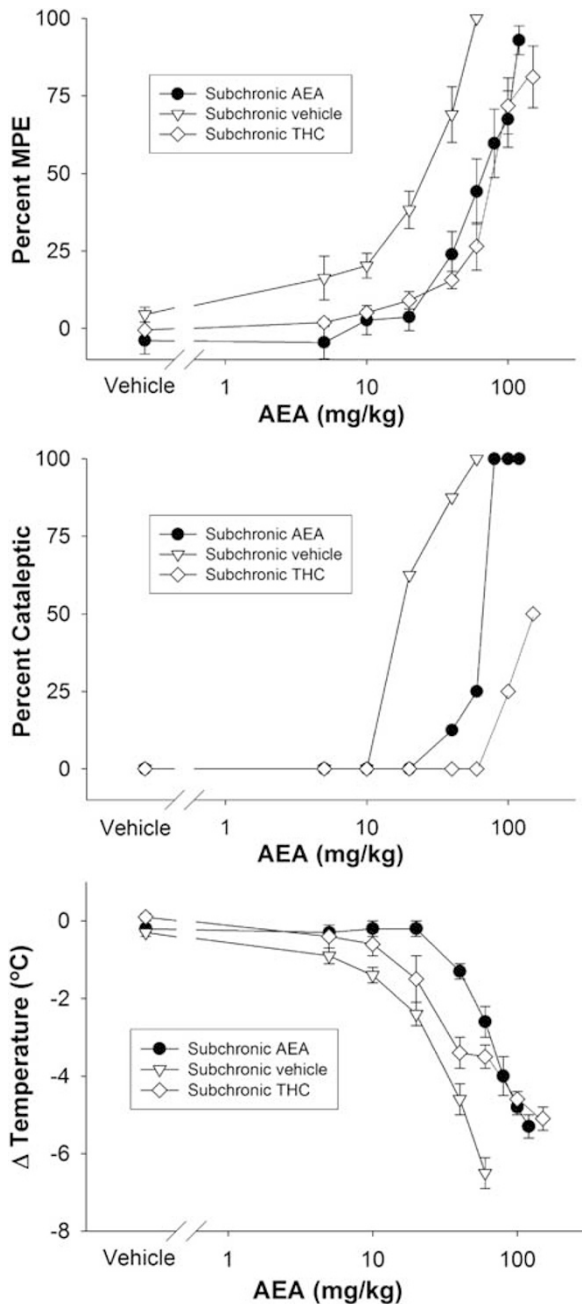


Figure 3 Cumulative dose–response curves of AEA in $FAAH^{-/-}$ mice treated subchronically with vehicle, THC, or AEA. Subjects were evaluated in the tail immersion test for antinociception (top panel), bar test for catalepsy (center panel), or hypothermia (bottom panel). Data are presented as mean \pm SEM, $n = 6$ –8 mice/condition.

THC treatment is at least in part a result of CB_1 receptor downregulation. In contrast to the results in THC-treated mice, [3H]WIN55,212-2 binding did not differ between brains from AEA- and vehicle-treated mice in any region examined, consistent with results obtained using agonist-stimulated [^{35}S]GTP γ S binding. However, a two-way ANOVA revealed an overall effect of treatment ($F_{5,176} = 27.6$, $p < 0.001$), and AEA-treated animals exhibited significantly reduced [3H]WIN55,212-2 binding

Table 3 Comparison of Anandamide Potency in $FAAH^{-/-}$ Mice That Were Treated Repeatedly with Vehicle, THC, or AEA

Subchronic treatment	Antinociception	Catalepsy	Hypothermia
Vehicle	20 (16–24)	16 (13–19)	17 (15–20)
THC	76 (58–99)	50% @ 150 mg/kg	32 (27–38)
AEA	55 (44–69)	62 (56–69)	50 (40–55)

Data represent ED_{50} values (95% CI) or maximum effect \pm SEM if efficacy $< 70\%$ and are represented in mg/kg.

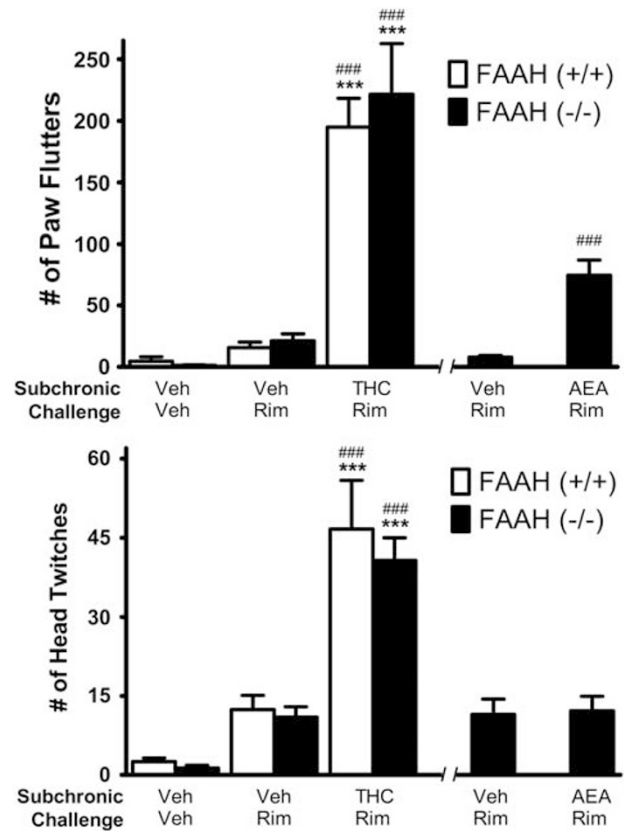


Figure 4 Evaluation of rimonabant (Rim; 10 mg/kg)-precipitated with-drawal in $FAAH^{-/-}$ mice treated subchronically with THC (50 mg/kg twice daily for 5.5. days) or AEA (50 mg/kg twice daily for 5.5. days), and $FAAH^{+/+}$ mice treated subchronically with THC (50 mg/kg twice daily for 5.5. days). Top panel: Rim precipitated significant increases in paw tremors in mice treated repeatedly with THC, regardless of genotype. Rim also precipitated significant increases in paw tremors in $FAAH^{-/-}$ mice treated repeatedly with AEA, though the magnitude of this effect was considerably less than in mice treated repeatedly with THC. Bottom panel: Rim precipitated significant increases in head twitches in mice treated repeatedly with THC, regardless of genotype. Rim did not elicit any differences in head twitches between $FAAH^{-/-}$ mice treated subchronically with vehicle or AEA. *** $p < 0.001$ vs corresponding subchronic vehicle–vehicle-challenge group of the same genotype. ### $p < 0.001$ vs corresponding subchronic vehicle–rimonabant challenge group of the same genotype. Data are presented as mean \pm SEM; $n = 6$ mice/condition.

when compared with vehicle, but significantly greater [3H]WIN55,212-2 binding when compared with THC (*post hoc* Tukey test, $p < 0.05$).

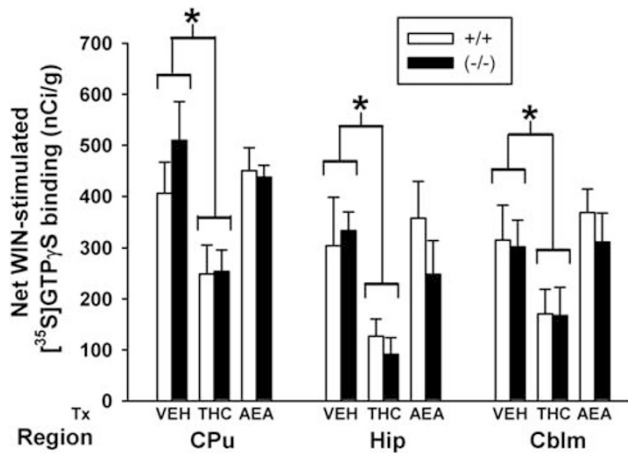


Figure 5 Subchronic THC reduces CB₁ receptor-mediated G-protein activity in both FAAH^{+/+} and FAAH^{-/-} mice, but subchronic AEA does not significantly alter CB₁ receptor-mediated activity. Densitometric analysis of net WIN55,212-2-stimulated [³⁵S]GTPγS binding in FAAH^{+/+} and FAAH^{-/-} mice treated with vehicle (VEH), THC, or anandamide (AEA) in CB₁ receptor-containing brain regions: caudate-putamen (CPu), hippocampus (Hip), and cerebellum (Cblm). No significant genotype differences were observed regardless of treatment or brain region. Values represent mean net [³⁵S]GTPγS binding (nCi/g) ± SEM, *n* = 4–6 mice/group (**P* < 0.05 by two way ANOVA with *post hoc* Dunnett's test).

Agonist-Stimulated [³⁵S]GTPγS Binding in Spinal Cord Membranes

To determine the effect of subchronic THC or AEA administration on cannabinoid receptor-mediated G-protein activation in spinal cord, a CNS region that is relevant for antinociception, agonist-stimulated [³⁵S]GTPγS binding was examined using WIN55,212-2 and AEA in isolated membrane preparations. Significant concentration-dependent stimulation of [³⁵S]GTPγS binding was observed with both WIN55,212-2 (two-way ANOVA, *F*₉₈ = 10.01, *p* < 0.0001, Figure 8) and AEA (two-way ANOVA, *F*₈₆ = 24.52, *p* < 0.0001, data not shown) in spinal cord membranes. Prior treatment with THC, but not AEA, decreased stimulation of [³⁵S]GTPγS binding by WIN55,212-2 (two-way ANOVA, *F*₆₈ = 19.44, *p* < 0.0001, Figure 8) or AEA (two-way ANOVA, *F*₄₁ = 12.96, *p* = 0.0009, data not shown). These findings were confirmed by non-linear regression analysis of data (Table 6). The *E*_{max} values of WIN55,212-2 in spinal cord membranes from THC- or AEA-treated mice were 72% (*p* < 0.05 by ANOVA, *F* = 4.97, *df* = 2, with *post hoc* Dunnett's test) and 85% (non-significant trend), respectively, of that obtained in vehicle-treated mice. Similar results were observed with AEA-stimulated [³⁵S]GTPγS binding, where *E*_{max} values of AEA were 75% (*p* < 0.05 by ANOVA, *F* = 6.61, *df* = 2, with *post hoc* Dunnett's test) and 104% (not significant), respectively, of that obtained in vehicle-treated mice. There were no significant differences in WIN55,212-2 or AEA EC₅₀ values between THC- or AEA-treated mice and vehicle control. Although prior treatment with AEA seemed to increase the AEA EC₅₀ value, this apparent increase was not statistically significant (*p* = 0.124 by ANOVA, *F* = 2.50, *df* = 2). Thus, these results indicate that subchronic administration of THC, but not AEA, produced significant CB₁ receptor desensitization in the spinal cord, similar to the results

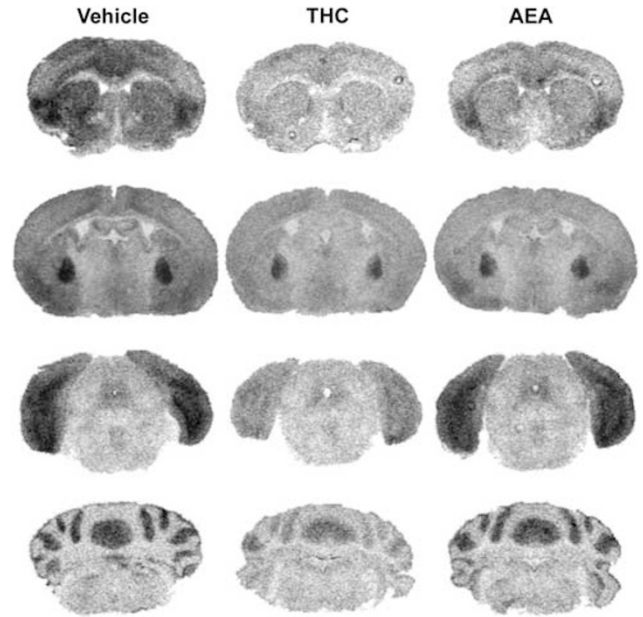


Figure 6 Representative autoradiograms illustrating WIN55,212-2-stimulated [³⁵S]GTPγS binding in brains from vehicle-, THC-, and AEA-treated FAAH^{-/-} mice. WIN55,212-2-stimulated [³⁵S]GTPγS binding is visibly reduced in FAAH^{-/-} mice treated with THC in nearly all regions including caudate-putamen (row 1), globus pallidus (row 2), PAG (row 3), and cerebellum (row 4). AEA-treated FAAH^{-/-} mice had intermediate levels of WIN55,212-2-stimulated [³⁵S]GTPγS binding between vehicle and THC-treated mice. Data from densitometric analysis are presented in Table 4.

Table 4 Net WIN55,212-2-Stimulated [³⁵S]GTPγS Binding in Brain Sections from Vehicle-, THC-, and AEA-Treated FAAH^{-/-} Mice

Region	Vehicle	THC	Anandamide
Caudate-putamen	218 ± 34	97 ± 16*	152 ± 28
Globus pallidus	774 ± 30	539 ± 41*	639 ± 60
Hippocampus	190 ± 27	65 ± 14*	132 ± 24
Substantia nigra	673 ± 30	506 ± 32*	592 ± 49
PAG	119 ± 21	55 ± 13*	79 ± 19
Cerebellum	258 ± 20	138 ± 21*	178 ± 23*

Brain sections were processed as described in Materials and Methods. Data shown are mean net [³⁵S]GTPγS-binding values (nCi/g) ± SEM from 8 to 12 mice per group (**p* < 0.05 different from vehicle-treated group by one-way ANOVA with a *post hoc* Dunnett's test).

obtained using autoradiography in brain, in which subchronic THC produced more significant desensitization than AEA.

In summary, WIN55,212-2-stimulated [³⁵S]GTPγS and [³H]WIN55,212-2 binding were significantly decreased throughout the brain in FAAH^{-/-} animals treated with THC, whereas AEA treatment minimally affected receptor levels or receptor-mediated G-protein activity. This conclusion is clearly illustrated in Figure 9, in which data from THC- and AEA-treated mouse brains are expressed as

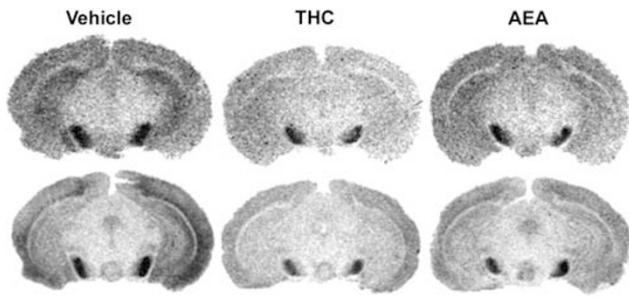


Figure 7 Representative autoradiograms illustrating [³H]WIN55,212-2 binding (top row) compared with WIN55,212-2-stimulated [³⁵S]GTP γ S binding (bottom row) in brains from FAAH^{-/-} mice treated subchronically with vehicle, THC or AEA at the level of the hippocampus and substantia nigra. [³H]WIN55,212-2 and WIN55,212-2-stimulated [³⁵S]GTP γ S binding are both visibly reduced in THC-treated mice, whereas brain sections from AEA-treated mice show intermediate levels of [³H]WIN55,212-2 and WIN55,212-2-stimulated [³⁵S]GTP γ S binding between vehicle- and THC-treated mice. Data from densitometric analysis are presented in Table 5.

Table 5 [³H]WIN55,212-2 Binding in Brain Sections from Vehicle-, THC-, and AEA-Treated FAAH^{-/-} Mice

Region	Vehicle	THC	Anandamide
Caudate putamen	1.3 ± 0.13	0.82 ± 0.11*	0.95 ± 0.09
Globus pallidus	2.69 ± 0.28	1.55 ± 0.12*	2.31 ± 0.18
Hippocampus	1.08 ± 0.10	0.49 ± 0.07*	0.88 ± 0.06
Substantia nigra	3.61 ± 0.44	2.25 ± 0.20*	3.11 ± 0.29
PAG	0.76 ± 0.10	0.43 ± 0.07*	0.57 ± 0.06
Cerebellum	1.79 ± 0.16	1.19 ± 0.12*	1.69 ± 0.18

Brain sections were assayed as described in Materials and Methods. Data shown are mean specific [³H]WIN55,212-2-binding values (pCi/g) ± SEM from 8 to 12 mice per group (**p* < 0.05 vs vehicle-treated animals, one-way ANOVA with a *post hoc* Dunnett's test).

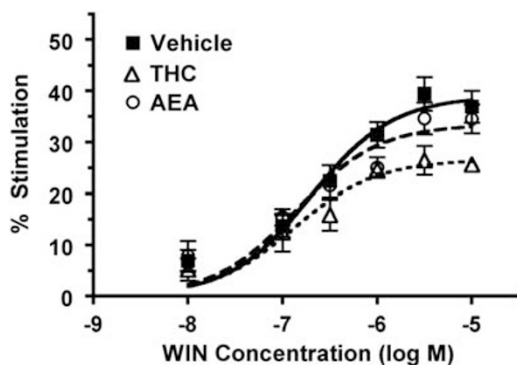


Figure 8 Effect of subchronic THC or AEA treatment on WIN-stimulated [³⁵S]GTP γ S binding in spinal cord. Spinal cord membranes from THC- or AEA-treated mice were incubated 0.1 nM [³⁵S]GTP γ S, 30 μ M GDP, and varying concentrations of WIN55,212-2 (WIN), as described in Materials and Methods. Data are mean percent stimulation ± SEM (*n* = 7).

percentage of vehicle control. These results are also similar to those obtained in the spinal cord, suggesting that THC and AEA differentially regulate cannabinoid receptors throughout the CNS.

Table 6 *E*_{max} and EC₅₀ Values of WIN- and AEA-Stimulated [³⁵S]GTP γ S Binding in Spinal Cord Membranes from Vehicle-, THC-, or AEA-Treated FAAH^{-/-} Mice

Treatment	Vehicle	THC	Anandamide
WIN <i>E</i> _{max} (% Stim)	39 ± 3.1	27 ± 1.4*	33 ± 3.2
WIN EC ₅₀ (nM)	229 ± 81	182 ± 39	162 ± 64
AEA <i>E</i> _{max} (% Stim)	34 ± 1.6	25 ± 2.3*	35 ± 3.3
AEA EC ₅₀ (nM)	559 ± 164	599 ± 84	1633 ± 603

Membranes were incubated with 0.1% BSA, 30 μ M GDP, 0.1 nM [³⁵S]GTP γ S, and varying concentrations of WIN55,212-2 (WIN) or AEA and concentration-effect curves were analyzed by non-linear regression, as described in Materials and Methods. Data are mean values ± SEM from seven (WIN) or five (AEA) separate experiments (**p* < 0.05 different from vehicle control by one-way ANOVA with a *post hoc* Dunnett's test).

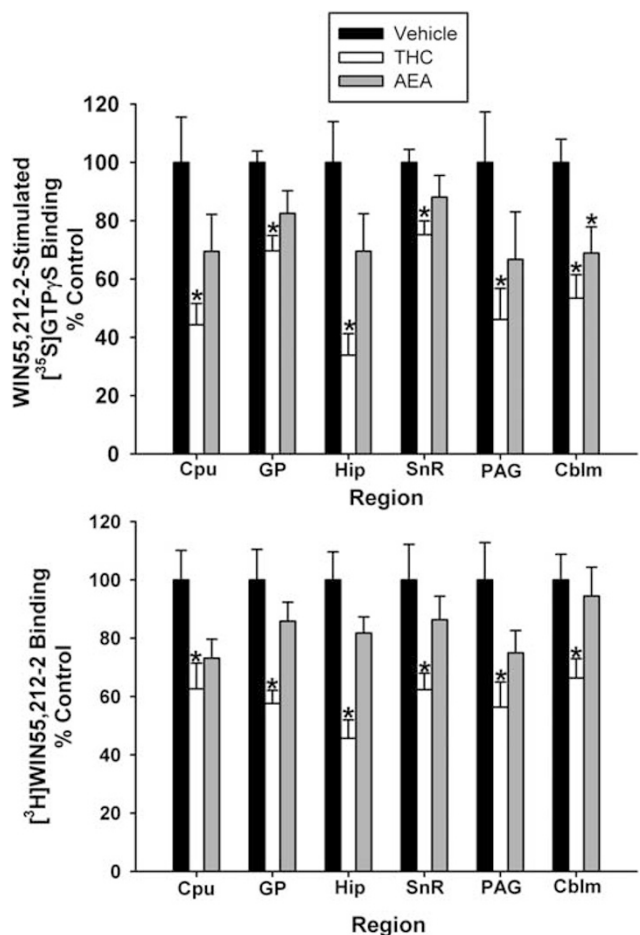


Figure 9 Subchronic THC attenuates CB₁ receptor binding and G-protein activity, whereas subchronic AEA produces minimal CB₁ receptor adaptation. Net WIN55,212-2-stimulated [³⁵S]GTP γ S binding (top) and [³H]WIN55,212-2 binding (bottom) in THC- and AEA-treated FAAH^{-/-} mice are expressed as a percentage of control (vehicle-treated) mice (*n* = 8–12 mice/group, **p* < 0.05 different from vehicle-treated group by one-way ANOVA with a *post hoc* Dunnett's test).

DISCUSSION

The results of this study revealed that repeated administration of AEA in FAAH^{-/-} mice produced different neuroadaptations

and *in vivo* consequences as compared with THC administration in these animals. Repeated administration of THC significantly reduced cannabinoid-stimulated G-protein activity and receptor binding levels in all regions examined, which was associated with tolerance to *in vivo* effects and antagonist-precipitated withdrawal. In contrast, repeated administration of AEA only slightly reduced receptor levels or receptor-mediated G-protein activity in FAAH^{-/-} mice to levels intermediate between vehicle- and THC-treated FAAH^{-/-} mice. *In vivo* data that were consistent with these effects include the observation that rimonabant elicited a significantly reduced magnitude of withdrawal effects in FAAH^{-/-} mice treated repeatedly with AEA compared with FAAH^{-/-} or FAAH^{+/+} mice that received subchronic THC treatment. The relationship between the expression of *in vivo* tolerance and CB₁ receptor adaptations after repeated THC or AEA administration is complex and seemed to vary by effect. Profound rightward shifts of THC dose-response curves were found in both genotypes after subchronic THC administration as well as for FAAH^{-/-} mice treated subchronically with AEA. In fact, THC produced considerably less catalepsy in FAAH^{-/-} mice treated repeatedly with AEA compared with FAAH^{-/-} or FAAH^{+/+} mice treated subchronically with THC (see Figure 2, bottom panel; Table 2). In contrast, AEA dose-response curves for antinociception and hypothermia were shifted only threefold in FAAH^{-/-} mice, regardless of whether the mice were treated subchronically with either THC or AEA. However, the AEA dose-response curve for catalepsy in FAAH^{-/-} mice was shifted further to the right after repeated administration of THC than repeated administration of AEA. Thus, *in vivo* tolerance was found in FAAH^{-/-} mice treated repeatedly with AEA or THC, but the magnitude of tolerance expressed depended more on the test drug than the drug administered subchronically, although catalepsy seems to be an exception.

As previously reported (Cravatt *et al*, 2001), FAAH^{-/-} and FAAH^{+/+} mice displayed similar sensitivity to the acute effects of THC. Here, using the cumulative dosing procedure yielded similar ED₅₀ values for antinociception, catalepsy, and hypothermia as previously reported when separate groups of mice were given a single bolus injection. In addition, cumulative dosing and single bolus injections led to similar brain and blood levels of THC (see Table 1). Collectively, these findings indicate the following two conclusions: (1) cumulative dosing and single bolus dosing lead to similar blood and brain levels of THC at the time of *in vivo* testing and (2) the THC cumulative dose-response curves for antinociception, catalepsy, and hypothermia are virtually identical between FAAH^{+/+} and FAAH^{-/-} mice. Thus, the impact of repeated THC or AEA administration on tolerance was evaluated by using cumulative dosing procedure to derive dose-response relationships.

Previous studies showed that brains from FAAH^{-/-} and FAAH^{+/+} mice exhibited similar levels of CB₁ receptors as assessed in membrane homogenates prepared from whole brain (Cravatt *et al*, 2001). This study extended those findings using autoradiography to show that the levels of CB₁ receptors and receptor-mediated activity do not differ between FAAH^{-/-} and FAAH^{+/+} mice in several regions that express CB₁ receptors and mediate cannabinoid effects.

Moreover, THC treatment attenuated receptor binding and receptor-mediated G-protein activity similarly in FAAH^{-/-} and FAAH^{+/+} mice. These findings suggest that elevated AEA levels do not affect acute CB₁ receptor activity or regulation in response to chronic THC. The present results differ somewhat from a previous study showing that 15 day AEA administration in FAAH-competent rats produced desensitization of cannabinoid-mediated G-protein activity in the absence of alterations in receptor binding (Rubino *et al*, 2000). Differences in both species and treatment duration could have contributed to the discrepancy with the present results.

Subchronic administration of AEA to FAAH^{-/-} mice led to approximately threefold decreases in the potency of its antinociceptive, cataleptic, and hypothermic effects. In contrast, a much more profound tolerance was found after repeated THC treatment in FAAH^{-/-} and FAAH^{+/+} mice. Both genotypes developed a similar degree of tolerance to the analgesic and cataleptic effects of THC, but FAAH^{-/-} mice exhibited a greater magnitude of tolerance to the hypothermic effects of THC than FAAH^{+/+} mice. This pattern of findings is consistent with the hypothesis that adaptation of CB₁ receptors and/or downstream signaling responses after repeated cannabinoid administration has a predominant function in the dampening of cannabinoid-mediated *in vivo* effects rather than through effects on endocannabinoids directly.

Earlier studies have shown that AEA-treated mice exhibit cross-tolerance to the cataleptic, hypolocomotor, analgesic, and hypothermic effects of THC (Fride, 1995). In contrast, animals treated with THC exhibit cross-tolerance to only certain AEA-mediated effects, for example antinociception (Welch, 1997), but not hypothermia (Pertwee *et al*, 1993). In fact, an assessment of cross-tolerance between THC and AEA and its analogs revealed that cross-tolerance was dependent on the task as well as the particular AEA analog tested (Wiley *et al*, 2005). This study used FAAH^{-/-} mice to examine cross-tolerance in both THC- and AEA-treated mice. FAAH^{-/-} mice treated subchronically with AEA displayed profound cross-tolerance to THC, with the greatest decrease in efficacy or potency to THC-mediated cataleptic effects. On the other hand, FAAH^{-/-} mice treated repeatedly with THC displayed cross-tolerance to the behavioral effects of AEA, with approximately threefold decreases in the potency to its antinociceptive and hypothermic effects, although a greater decrease in the potency or efficacy of AEA-mediated cataleptic effects was found. These findings taken together suggest that the expression of tolerance is more greatly affected by the specific ligand used during testing than the ligand administered throughout the development of tolerance. In other words, testing with a low efficacy ligand, such as THC, revealed greater tolerance and cross-tolerance than a higher efficacy ligand (eg, AEA) and, therefore, perhaps greater sensitivity to receptor loss, similarly to previous findings at the level of CB₁ receptor signaling (Breivogel *et al*, 2003; Selley *et al*, 2004). A similar relationship between efficacy of the test ligand and sensitivity to cross-tolerance has been reported for μ -opioid receptor-mediated antinociception (Paronis and Holtzman, 1992). However, further experiments with multiple agonists differing in intrinsic efficacy will be required to definitively determine whether this

relationship holds true for cannabinoid receptors. Nonetheless, the present results show that subchronic administration of AEA produces less tolerance to the effects of subsequently administered AEA, compared with the magnitude of tolerance observed with subchronic THC administration and subsequent testing with THC.

Subchronic administration of maximally effective doses of THC produced similar magnitudes of CB₁ receptor desensitization and downregulation in FAAH^{+/+} and FAAH^{-/-} mice, as previously reported in various rodent strains using a variety of treatment paradigms (Sim-Selley, 2003). The THC brain levels resulting from 50 mg/kg THC were 1072 ± 156 ng/g of tissue or roughly equivalent to those after 5 mg/kg of intravenously administered THC (Wilson *et al*, 2006). However, an equi-active dose of AEA administered subchronically did not alter CB₁ receptors or activity in FAAH^{+/+} mice, which was predicted due to the instability of AEA in these mice. Surprisingly, in FAAH^{-/-} mice, AEA treatment did not significantly reduce either CB₁ receptor levels or receptor-mediated G-protein activity in most CNS regions evaluated. The mechanism underlying differential cannabinoid receptor regulation by THC vs AEA is not clear. Both THC and AEA are partial agonists, although AEA has higher intrinsic efficacy compared with THC (Breivogel *et al*, 1998). Previous studies showed that although treatment with equi-active doses of THC or WIN55,212-2, a full agonist, produced desensitization and downregulation, THC treatment produced significantly greater desensitization than WIN55,212-2 in a number of regions (Sim-Selley and Martin, 2002). This finding is consistent with the present results and suggests that low efficacy agonists might produce greater receptor adaptation because they must occupy a higher percentage of total receptors to produce equivalent effects. However, comparison of repeated treatments with multiple agonists of varying intrinsic efficacies would be necessary to confirm this hypothesis. It is also possible that different agonists can differentially induce receptor interaction with β -arrestin to produce varying levels of desensitization, as suggested in previous studies (Bohn *et al*, 2004; Breivogel *et al*, 2008).

Rimonabant-precipitated withdrawal is used to assess cannabinoid dependence (Lichtman and Martin, 2002). In this study, rimonabant elicited profound somatic withdrawal signs in FAAH^{-/-} and ^{+/+} mice treated subchronically with THC, whereas FAAH^{-/-} mice treated with AEA displayed a greatly reduced withdrawal response. The function of cannabinoid receptor desensitization and/or downregulation in withdrawal is not clear, but the results are consistent with the general finding that repeated AEA treatment did not produce significant adaptation, whereas THC treatment produced both desensitization and downregulation of CB₁ receptors. Withdrawal after rimonabant administration in cannabinoid-treated animals is often associated with increased cAMP activity (Hutcheson *et al*, 1998; Rubino *et al*, 1998; Tzavara *et al*, 2000), suggesting that fewer downstream adaptations also occur after AEA as compared with THC treatment, although this hypothesis will have to be confirmed in future studies. Nevertheless, diminished dependence elicited by subchronic AEA in FAAH^{-/-} mice is consistent with lack of dependence liability of the FAAH inhibitor, URB597 (Schlosburg *et al*, 2009).

Cannabinoids have generated interest for treatment of a number of disorders, but their therapeutic potential is limited by unwanted side effects and the development of tolerance and dependence with repeated use. An alternate approach is to increase levels of endogenous cannabinoids by administering inhibitors of their degradative enzymes. Piomelli and colleagues initially reported the development of URB532 and URB597 (Kathuria *et al*, 2003), FAAH inhibitors that produced anxiolytic and analgesic effects in the absence of catalepsy, hypothermia, or appetite stimulation. Subsequent studies have shown that several FAAH inhibitors produce analgesia in a variety of pain models (Lichtman *et al*, 2004a; Jayamanne *et al*, 2006), further generating interest in the therapeutic potential of these compounds. The current results indicate that increasing AEA produces less cellular adaptation and associated dependence and less tolerance to its own effects than administration of THC, and further support the possible clinical usage of FAAH inhibitors.

ACKNOWLEDGEMENTS

These studies were supported by NIH grants R01DA014277, P01DA017259, R01DA15197, R01DA03672, R01DA02396, R01DA015683, P50DA005274, P01DA009789, T32DA007027, and F31DA026279 and The Institute of International Education/Scholar Rescue Funds/New York (RA).

DISCLOSURE

This research has been supported solely by the National Institutes of Health (NIH). The following authors KWF, JES, RAA, THS, DES, and LJS declare that, except for income received from the primary employer, no financial support or compensation has been received from any individual or corporate entity over the past 3 years for research or professional service and there are no personal financial holdings that could be perceived as constituting a potential conflict of interest. AHL, BFC, and AJT report no conflicts of interest with the work presented in this manuscript. AJT was employed by Abbott labs after completion of this work and is currently employed by AMAG Pharmaceuticals. AHL declares that over the past 3 years he has received compensation from Pfizer, Ironwood Pharmaceuticals, and Allergan. In addition, AHL has received funding from Pfizer and Ironwood for contracts unrelated to the research presented in this paper. BFC declares that over the past 3 years, he has received compensation from Pfizer, Activx Biosciences, and aTyr Pharma.

REFERENCES

- Aceto MD, Scates SM, Razdan RK, Martin BR (1998). Anandamide, an endogenous cannabinoid, has a very low physical dependence potential. *J Pharmacol Exp Ther* 287: 598–605.
- Bohn LM, Dykstra LA, Lefkowitz RJ, Caron MG, Barak LS (2004). Relative opioid efficacy is determined by the complements of the G protein-coupled receptor desensitization machinery. *Mol Pharmacol* 66: 106–112.
- Breivogel CS, Childers SR, Deadwyler SA, Hampson RE, Vogt LJ, Sim-Selley LJ (1999). Chronic delta⁹-tetrahydrocannabinol treatment produces a time-dependent loss of cannabinoid

- receptor-activated G-proteins in brain. *J Neurochem* **73**: 2447–2459.
- Breivogel CS, Lambert JM, Gerfin S, Huffman JW, Razdan RK (2008). Sensitivity to delta9-tetrahydrocannabinol is selectively enhanced in beta-arrestin2 $-/-$ mice. *Behav Pharmacol* **19**: 298–307.
- Breivogel CS, Scates SM, Beletskaya IO, Lowery OB, Aceto MD, Martin BR (2003). The effects of delta9-tetrahydrocannabinol physical dependence on brain cannabinoid receptors. *Eur J Pharmacol* **459**: 139–150.
- Breivogel CS, Selley DE, Childers SR (1998). Cannabinoid receptor agonist efficacy for stimulating [35 S]GTP γ S binding to rat cerebellar membranes correlates with agonist-induced decreases in GDP affinity. *J Biol Chem* **273**: 16865–16873.
- Budney AJ, Hughes JR (2006). The cannabis withdrawal syndrome. *Curr Opin Psychiatry* **19**: 233–238.
- Colquhoun D (1971). *Lectures on biostatistics: an introduction to statistics with applications in biology & medicine*. Clarendon Press: Oxford, pp 327–332.
- Compton DR, Johnson MR, Melvin LS, Martin BR (1992). Pharmacological profile of a series of bicyclic cannabinoid analogs: classification as cannabimimetic agents. *J Pharmacol Exp Ther* **260**: 201–209.
- Cook SA, Lowe JA, Martin BR (1998). CB1 receptor antagonist precipitates withdrawal in mice exposed to Delta9-tetrahydrocannabinol. *J Pharmacol Exp Ther* **285**: 1150–1156.
- Cravatt BF, Demarest K, Patricelli MP, Bracey MH, Giang DK, Martin BR et al (2001). Supersensitivity to anandamide and enhanced endogenous cannabinoid signaling in mice lacking fatty acid amide hydrolase. *Proc Natl Acad Sci USA* **98**: 9371–9376.
- Fride E (1995). Anandamides: tolerance and cross-tolerance to delta 9-tetrahydrocannabinol. *Brain Res* **697**: 83–90.
- Glass M, Dragunow M, Faull RLM (1997). Cannabinoid receptors in the human brain: a detailed anatomical and quantitative autoradiographic study in the fetal, neonatal and adult human brain. *Neuroscience* **77**: 299–318.
- Herkenham M, Lynn AB, Johnson MR, Melvin LS, de Costa BR, Rice KC (1991). Characterization and localization of cannabinoid receptors in rat brain: a quantitative *in vitro* autoradiographic study. *J Neurosci* **11**: 563–583.
- Hollister LE (1986). Health aspects of cannabis. *Pharmacol Rev* **38**: 1–20.
- Howlett AC, Barth F, Bonner TI, Cabral G, Casellas P, Devane WA et al (2002). International Union of Pharmacology. XXVII. Classification of cannabinoid receptors. *Pharmacol Rev* **54**: 161–202.
- Hutcheson DM, Tzavara ET, Smadjs C, Valjent E, Roques BP, Hanoune J et al (1998). Behavioural and biochemical evidence for signs of abstinence in mice chronically treated with Δ 9-tetrahydrocannabinol. *Br J Pharmacol* **125**: 1567–1577.
- Jayamanne A, Greenwood R, Mitchell VA, Aslan S, Piomelli D, Vaughan CW (2006). Actions of the FAAH inhibitor URB597 in neuropathic and inflammatory chronic pain models. *Br J Pharmacol* **147**: 281–288.
- Jones RT, Benowitz N, Bachman J (1976). Clinical studies of cannabis tolerance and dependence. *Ann N Y Acad Sci* **282**: 221–239.
- Jones RT, Benowitz NL, Herning RI (1981). Clinical relevance of cannabis tolerance and dependence. *J Clin Pharmacol* **21**: 143S–152S.
- Kathuria S, Gaetani S, Fegley D, Valino F, Duranti A, Tontini A et al (2003). Modulation of anxiety through blockade of anandamide hydrolysis. *Nat Med* **9**: 76–81.
- Lichtman AH, Leung D, Shelton CC, Saghatelian A, Hardouin C, Boger DL et al (2004a). Reversible inhibitors of fatty acid amide hydrolase that promote analgesia: evidence for an unprecedented combination of potency and selectivity. *J Pharmacol Exp Ther* **311**: 441–448.
- Lichtman AH, Martin BR (2002). Marijuana withdrawal syndrome in the animal model. *J Clin Pharmacol* **42**: 20S–27S.
- Lichtman AH, Martin BR (2005). Cannabinoid tolerance and dependence. *Handb Exp Pharmacol* **691**–717.
- Lichtman AH, Shelton CC, Advani T, Cravatt BF (2004b). Mice lacking fatty acid amide hydrolase exhibit a cannabinoid receptor-mediated phenotypic hypoalgesia. *Pain* **109**: 319–327.
- Martin BR, Sim-Selley LJ, Selley DE (2004). Signaling pathways involved in the development of cannabinoid tolerance. *Trends Pharmacol Sci* **25**: 325–330.
- Paronis CA, Holtzman SG (1992). Development of tolerance to the analgesic activity of mu agonists after continuous infusion of morphine, meperidine or fentanyl in rats. *J Pharmacol Exp Ther* **262**: 1–9.
- Pertwee RG, Stevenson LA, Griffin G (1993). Cross-tolerance between delta-9-tetrahydrocannabinol and the cannabimimetic agents, CP 55,940, WIN 55,212-2 and anandamide. *Br J Pharmacol* **110**: 1483–1490.
- Romero J, Berrendero F, Garcia-Gil L, Lin SY, Makriyannis A, Ramos JA et al (1999). Cannabinoid receptor and WIN-55,212-2-stimulated [35 S]GTP γ S binding and cannabinoid receptor mRNA levels in several brain structures of adult male rats chronically exposed to R-methanandamide. *Neurochem Int* **34**: 473–482.
- Romero J, Garcia L, Fernandez-Ruiz JJ, Cebeira M, Ramos JA (1995). Changes in rat brain cannabinoid binding sites after acute or chronic exposure to their endogenous agonist, anandamide, or to delta 9-tetrahydrocannabinol. *Pharmacol Biochem Behav* **51**: 731–737.
- Rubino T, Patrini G, Massi P, Fuzio D, Vigano D, Giognoni G et al (1998). Cannabinoid-precipitated withdrawal: a time-course study of the behavioral aspect and its correlation with cannabinoid receptors and G protein expression. *J Pharmacol Exp Ther* **285**: 813–819.
- Rubino T, Vigano D, Costa B, Colleoni M, Parolaro D (2000). Loss of cannabinoid-stimulated guanosine 5'-O-(3-[(35 S)]thiotriphosphate) binding without receptor down-regulation in brain regions of anandamide-tolerant rats. *J Neurochem* **75**: 2478–2484.
- Schlosburg JE, Carlson BL, Ramesh D, Abdullah RA, Long JZ, Cravatt BF et al (2009). Inhibitors of endocannabinoid-metabolizing enzymes reduce precipitated withdrawal responses in THC-dependent mice. *AAPS J* **11**: 342–352.
- Selley DE, Cassidy MP, Martin BR, Sim-Selley LJ (2004). Long-term administration of delta9-tetrahydrocannabinol desensitizes CB1-, adenosine A1-, and GABAB-mediated inhibition of adenylyl cyclase in mouse cerebellum. *Mol Pharmacol* **66**: 1275–1284.
- Sim-Selley LJ (2003). Regulation of cannabinoid CB1 receptors in the central nervous system by chronic cannabinoids. *Crit Rev Neurobiol* **15**: 91–119.
- Sim-Selley LJ, Martin BR (2002). Effect of chronic administration of WIN 55,212-2 or Δ 9-tetrahydrocannabinol on cannabinoid receptor adaptation in mice. *J Pharmacol Exp Ther* **303**: 36–44.
- Sim-Selley LJ, Schechter NS, Rorrer WK, Dalton GD, Hernandez J, Martin BR et al (2006). Prolonged recovery rate of CB1 receptor adaptation after cessation of long-term cannabinoid administration. *Mol Pharmacol* **70**: 986–996.
- Smith PB, Compton DR, Welch SP, Razdan RK, Mechoulam R, Martin BR (1994). The pharmacological activity of anandamide, a putative endogenous cannabinoid, in mice. *J Pharmacol Exp Ther* **270**: 219–227.
- Tsou K, Patrick SL, Walker JM (1995). Physical withdrawal in rats tolerant to Δ 9-tetrahydrocannabinol precipitated by a cannabinoid receptor antagonist. *Eur J Pharmacol* **280**: R13–R15.
- Tzavara ET, Valjent E, Firmo C, Mas M, Beslot F, Defer N et al (2000). Cannabinoid withdrawal is dependent upon PKA activation in the cerebellum. *Eur J Neurosci* **12**: 1038–1046.
- Villares J (2007). Chronic use of marijuana decreases cannabinoid receptor binding and mRNA expression in the human brain. *Neuroscience* **145**: 323–334.
- Welch SP (1997). Characterization of anandamide-induced tolerance: comparison to delta-9-THC-induced interactions with dynorphinergic systems. *Drug Alcohol Depend* **45**: 39–45.

- Wiley JL, Smith FL, Razdan RK, Dewey WL (2005). Task specificity of cross-tolerance between Delta9-tetrahydrocannabinol and anandamide analogs in mice. *Eur J Pharmacol* **510**: 59–68.
- Willoughby KA, Moore SF, Martin BR, Ellis EF (1997). The biodisposition and metabolism of anandamide in mice. *J Pharmacol Exp Ther* **282**: 243–247.
- Wilson DM, Varvel SA, Harloe JP, Martin BR, Lichtman AH (2006). SR 141716 (rimonabant) precipitates withdrawal in marijuana-dependent mice. *Pharmacol Biochem Behav* **85**: 105–113.
- Wise LE, Shelton CC, Cravatt BF, Martin BR, Lichtman AH (2007). Assessment of anandamide's pharmacological effects in mice deficient of both fatty acid amide hydrolase and cannabinoid CB1 receptors. *Eur J Pharmacol* **557**: 44–48.