

Insight into the evolution of the Solanaceae from the parental genomes of *Petunia hybrida*

Aureliano Bombarely^{1†}, Michel Moser^{2†}, Avichai Amrad², Manzhu Bao³, Laure Bapaume⁴, Cornelius S. Barry⁵, Mattijs Bliëk⁶, Maaïke R. Boersma⁷, Lorenzo Borghi⁸, Rémy Bruggmann⁹, Marcel Bucher¹⁰, Nunzio D'Agostino¹¹, Kevin Davies¹², Uwe Druege¹³, Natalia Dudareva¹⁴, Marcos Egea-Cortines¹⁵, Massimo Delledonne¹⁶, Noe Fernandez-Pozo¹⁷, Philipp Franken¹³, Laurie Grandont¹⁸, J. S. Heslop-Harrison¹⁹, Jennifer Hintzsche²⁰, Mitrick Johns²⁰, Ronald Koes⁶, Xiaodan Lv²¹, Eric Lyons²², Diwa Malla²³, Enrico Martinoia⁸, Neil S. Mattson²⁴, Patrice Morel²⁵, Lukas A. Mueller¹⁷, Joëlle Muhlemann¹⁴, Eva Nouri²⁶, Valentina Passeri⁶, Mario Pezzotti¹⁶, Qinzhou Qi²³, Didier Reinhardt²⁷, Melanie Rich²⁸, Katja R. Richert-Pöggeler²⁹, Tim P. Robbins³⁰, Michael C. Schatz³¹, M. Eric Schranz¹⁸, Robert C. Schuurink⁷, Trude Schwarzacher¹⁹, Kees Spelt⁶, Haibao Tang²², Susan L. Urbanus⁶, Michiel Vandenbussche²⁵, Kitty Vijverberg³², Gonzalo H. Villarino²⁴, Ryan M. Warner⁵, Julia Weiss¹⁵, Zhen Yue²¹, Jan Zethof³², Francesca Quattrocchio⁶, Thomas L. Sims²³ and Cris Kuhlemeier^{2*}

***Petunia hybrida* is a popular bedding plant that has a long history as a genetic model system. We report the whole-genome sequencing and assembly of inbred derivatives of its two wild parents, *P. axillaris* N and *P. inflata* S6. The assemblies include 91.3% and 90.2% coverage of their diploid genomes (1.4 Gb; $2n = 14$) containing 32,928 and 36,697 protein-coding genes, respectively. The genomes reveal that the *Petunia* lineage has experienced at least two rounds of hexaploidization: the older gamma event, which is shared with most Eudicots, and a more recent Solanaceae event that is shared with tomato and other solanaceous species. Transcription factors involved in the shift from bee to moth pollination reside in particularly dynamic regions of the genome, which may have been key to the remarkable diversity of floral colour patterns and pollination systems. The high-quality genome sequences will enhance the value of *Petunia* as a model system for research on unique biological phenomena such as small RNAs, symbiosis, self-incompatibility and circadian rhythms.**

¹Department of Horticulture, Virginia Polytechnic Institute and State University, 490 West Campus Dr., Blacksburg, Virginia 24061, USA. ²Institute of Plant Sciences, University of Bern, Altenbergrain 21, 3013 Bern, Switzerland. ³Huazhong Agricultural University, Wuhan 430070, P. R. China. ⁴Department of Biology, University of Fribourg, Fribourg, Switzerland, 6 Rte Albert Gockel, CH-1700 Fribourg, Switzerland. ⁵Department of Horticulture, Michigan State University, East Lansing, Michigan 48824, USA. ⁶Department of Plant Development and (Epi)Genetics, Swammerdam Institute for Life Sciences, University of Amsterdam, Science Park 904, 1098 XH, Amsterdam, The Netherlands. ⁷Department of Plant Physiology, University of Amsterdam, Science Park 904, 1098 XH, Amsterdam, The Netherlands. ⁸Institute of Plant and Microbiology, University of Zürich, Zollikerstr. 107, CH-8008 Zürich, Switzerland. ⁹Interfaculty Bioinformatics Unit, University of Bern, Baltzerstrasse 6, CH-3012 Bern, Switzerland. ¹⁰Cologne Biocenter, Cluster of Excellence on Plant Sciences (CEPLAS), University of Cologne, Zulpicher Straße 47b, 50674 Cologne, Germany. ¹¹Consiglio per la Ricerca in Agricoltura e l'analisi dell'economia agraria, Centro di Ricerca per l'Orticoltura (CREA-ORT), via Cavallotti 25, 84098 Pontecagnano (Sa) Italy. ¹²Department of Breeding and Genomics, Plant and Food Research, Auckland, 120 Mt Albert Road, Mount Albert, Sandringham 1142, New Zealand. ¹³Department of Plant Propagation, Leibniz Institute of Vegetable and Ornamental Crops (IGZ), Kühnhäuserstr. 101, 99090 Erfurt, Germany. ¹⁴Department of Biochemistry, Purdue University, West Lafayette, Indiana 47907-2063, USA. ¹⁵Instituto de Biotecnología Vegetal, Universidad Politécnica de Cartagena, 30202, Cartagena, Spain. ¹⁶Dipartimento di Biotecnologie, Università degli Studi di Verona, Strada le Grazie 15, 37134 Verona, Italy. ¹⁷Boyce Thompson Institute for Plant Research, 533 Tower Rd, Ithaca, New York 14853, USA. ¹⁸Biosystematics Group, Wageningen University and Research Center, Droevendaalsesteeg 1, 6708 PB, Wageningen, The Netherlands. ¹⁹Department of Genetics, University of Leicester, University Road, Leicester LE1 7RH, UK. ²⁰Department of Biological Sciences, Northern Illinois University, DeKalb, Illinois 60115, USA. ²¹Beijing Genomics Institute, Shenzhen 518083, China. ²²School of Plant Sciences, iPlant Collaborative, University of Arizona, Tucson, Arizona 85721, USA. ²³Department of Biological Sciences, Northern Illinois University, DeKalb, Illinois 60115, USA. ²⁴School of Integrative Plant Science, Cornell University, Cornell University, Ithaca, New York 14853, USA. ²⁵Laboratoire Reproduction et Développement des Plantes (RDP), ENS de Lyon/CNRS/INRA/UCBL, 46 Allée d'Italie, 69364 Lyon, France. ²⁶Department of Biology, University of Fribourg, Fribourg, Switzerland, 4 Rte Albert Gockel, CH-1700 Fribourg, Switzerland. ²⁷Department of Biology, University of Fribourg, Fribourg, Switzerland, 3 Rte Albert Gockel, CH-1700 Fribourg, Switzerland. ²⁸Department of Biology, University of Fribourg, Fribourg, Switzerland, 5 Rte Albert Gockel, CH-1700 Fribourg, Switzerland. ²⁹Institute for Epidemiology and Pathogen Diagnostics, Julius Kühn-Institut (JKI), Federal Research Centre for Cultivated Plants, Messeweg 11-12, 38104 Braunschweig, Germany. ³⁰Department of Crop and Plant Sciences, University of Nottingham, Sutton Bonington, Leicestershire, UL LE12 5RD, UK. ³¹Cold Spring Harbor Laboratory, 1 Bungtown Road, Cold Spring Harbor, New York 11724, USA. ³²Radboud University, FNWI, IWWR, Heyendaalseweg 135, 6525AJ Nijmegen, The Netherlands. [†]These authors contributed equally to this work. *e-mail: cris.kuhlemeier@ips.unibe.ch

The garden petunia, *Petunia hybrida*, with its diversity of colour and morphology is the world's most popular bedding plant with an annual wholesale value exceeding US\$130 million in the USA alone¹. *Petunia* has a long history as a model species for scientific research. To the scientific community, *Petunia* is best known for the discovery of RNAi^{2,3}. This breakthrough was the culmination of decades-long research on the synthesis and regulation of the floral pigments and as a consequence anthocyanin biosynthesis remains one of the best-known pathways of secondary metabolism in any plant species⁴. Development, transposon activity, genetic self-incompatibility, and interactions with microbes, herbivores and pollinators have also been active research topics utilizing *Petunia* as model system.

The genus *Petunia* is a member of the Solanaceae family native to South America. It forms a separate and early branching clade within the family with a base chromosome number of $x=7$ rather than the typical $x=12$ found for most Solanaceae crown-group species, including important crops such as tomato, potato, tobacco, pepper and eggplant⁵. The commercial *P. hybrida* is derived from crosses between a white-flowered, moth-pollinated *P. axillaris*, and species of the *P. integrifolia* clade, a group of closely related bee-pollinated species and subspecies (Fig. 1)^{6,7}. The first hybrids were produced by European horticulturalists in the early nineteenth century, probably multiple times from different accessions of the two parent clades^{7,8}. The remarkable phenotypic diversity in today's commercial garden petunias is the result of almost two centuries of intense commercial breeding. Here, we present the genome sequences of *P. axillaris* N and *P. inflata* S6, two inbred laboratory accessions representing the parents of *P. hybrida* (Fig. 1).

Results and discussion

Sequencing, assembly and annotation. For *P. axillaris* N, we performed a hybrid *de novo* assembly using a combination of short read (Illumina; coverage 137X) and long read technologies (PacBio; coverage 21X), whereas for *P. inflata* S6 we produced exclusively short reads (Illumina; coverage 135X) and performed a short read *de novo* assembly (for details see Supplementary Note 1). The resulting high-quality assemblies have a size of 1.26 Gb for *P. axillaris* and 1.29 Gb for *P. inflata* (Table 1). The estimated size of both genomes is 1.4 Gb, using a k-mer size of 31, which is consistent with previous microdensity measurements⁹. We have remapped Illumina reads to the assemblies and called single nucleotide polymorphism (SNPs) to estimate the level of heterozygosity, which is estimated as 0.03% for both accessions. Moreover, we mapped the 248 Core Eukaryotic Genes (CEGs) to assess the completeness of both assemblies and found 239 (94%) and 243 (98%) in the assembly of *P. axillaris* and *P. inflata*, respectively. The estimated unassembled fraction of the genome comprises ~140 Mb for *P. axillaris* (181 Mb if sequence gaps of 41 Mb are included) and ~110 Mb for *P. inflata* (197 Mb with sequence gaps of 87 Mb), which is likely to be due to the large numbers of repetitive sequences (see below). Genome annotation identified 32,928 protein-coding genes for *P. axillaris* and 36,697 protein-coding genes for *P. inflata* with an average of 5.2 and 5.1 exons per protein coding gene and an average predicted protein size of 393 and 386 amino acids, respectively.

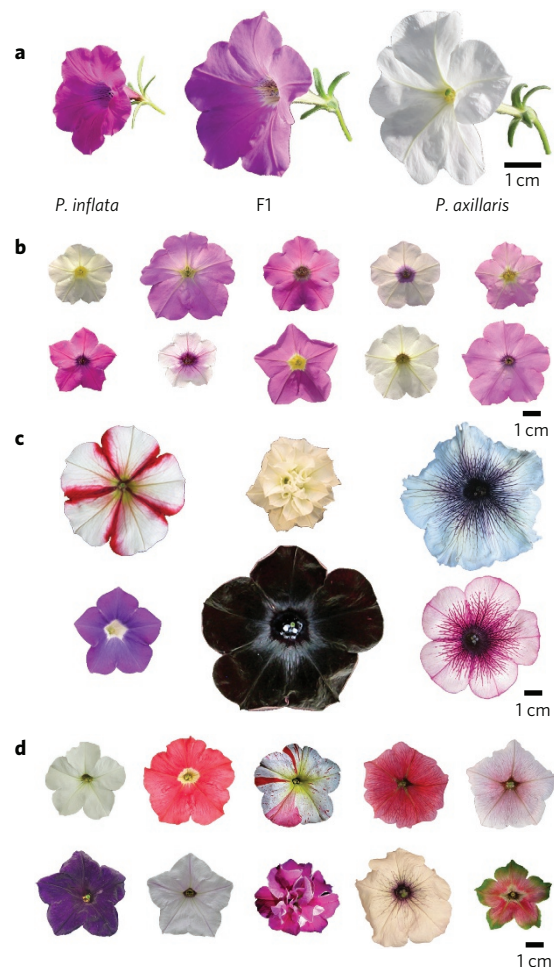


Figure 1 | Origin and diversity of *P. hybrida* flowers. **a**, *P. inflata* S6, *P. axillaris* N and their F1. **b**, Selected individuals from *P. inflata* S6 \times *P. axillaris* N F2 population. **c**, Commercial *P. hybrida* accessions. **d**, *P. hybrida* accessions and mutants. Row 1, from left to right: Mitchell (W115); R27; transposon line W138; R143; vacuolar *ph3* mutant with pale colour compared with the isogenic R143. Mitchell, R27 and R143 were used for transcriptomics analysis. Row 2, from left to right: V26; V26 with CHS RNAi transgene (images provided by J. Kooter, VU Amsterdam); homeotic mutant *pMADS3RNAi/fbp6*; *an2* mutant; homeotic mutant *blind*.

Repeat landscape of *Petunia* genomes. *Petunia* genomes are rich in repetitive DNA (as are most other plant genomes), but its presence at 60–65% of the assembled genome is relatively low considering its genome size (Fig. 2a; Supplementary Note 2), indicating a larger gene, regulatory and low copy sequence space. Long terminal repeats (LTR)-retroelement-related sequences are abundant near centromeres (Fig. 2b), and within the assemblies, equal numbers of fragments and full-length Ty3/Gypsy-like and Ty1/Copia-like elements were detected. Repeat cluster analysis of unassembled reads supported the amount and complexity of the diverse and rearranged repeat landscape of *Petunia*. *Petunia* chromosomes

Table 1 | Summary statistics of the genome assemblies.

Species	Category	Number	L50 (kb)	N50 (seqs)	Longest (Mb)	Size (Gb)
<i>P. axillaris</i> N	Total contigs	109,892	95.17	3,943	0.57	1.22
	Total scaffolds	83,639	1,236.73	309	8.56	1.26
<i>P. inflata</i> S6	Total contigs	213,254	34.99	9,813	0.57	1.20
	Total scaffolds	136,283	884.43	406	5.81	1.29

The assemblies are version Peaxi162 for *P. axillaris* N and version Peinf101 for *P. inflata* S6.

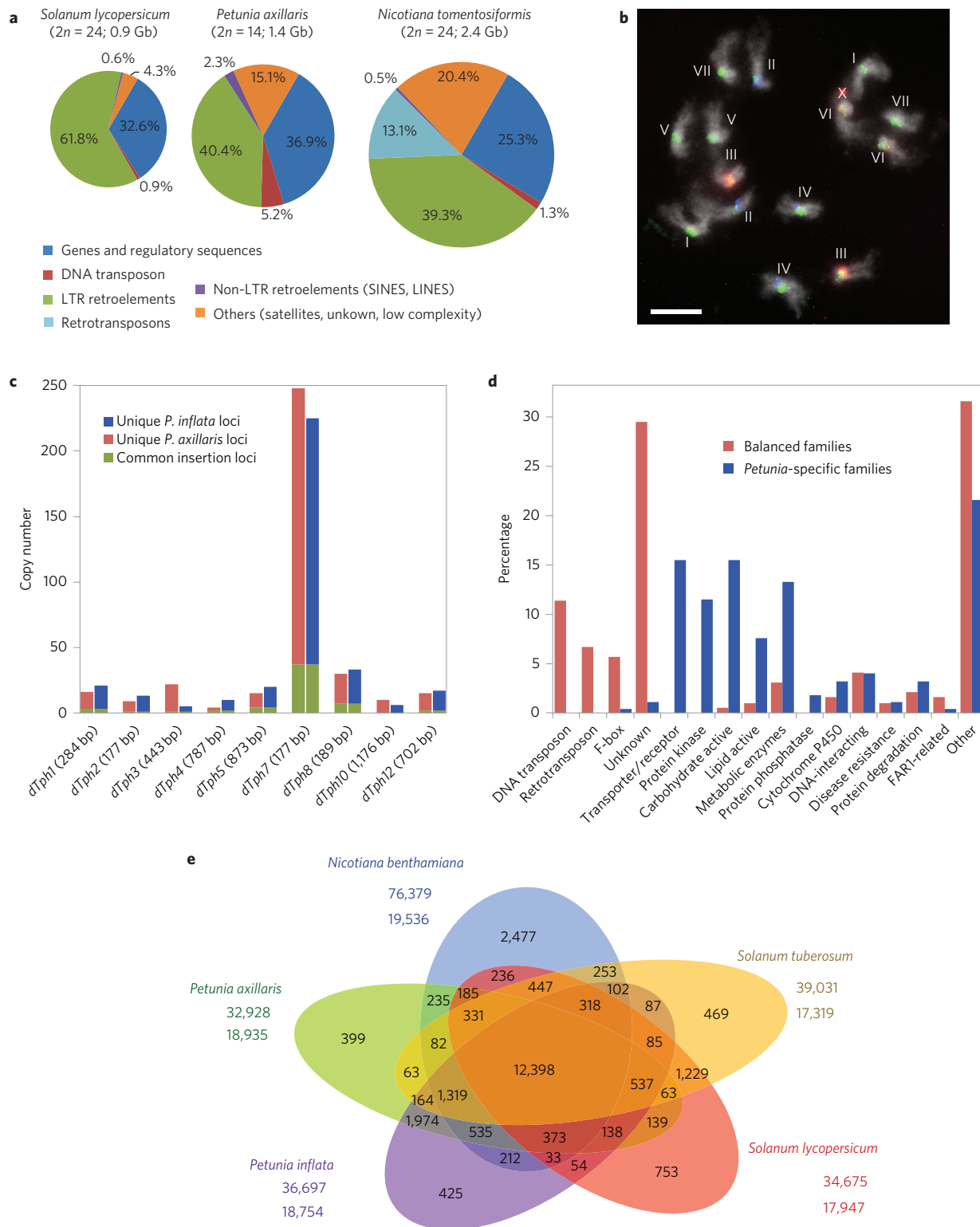


Figure 2 | Genome and repeat organization. **a**, Comparative genome organization of *Solanum lycopersicum*, *P. axillaris* and *Nicotiana tomentosiformis*. The circles are proportional to genome size; regulatory sequences and repeat classes are shown in the segments^{19,29}. **b**, Fluorescent *in situ* hybridization (FISH) to *P. axillaris* chromosomes (grey). Red: four pericentromeric *Petunia vein clearing virus* (PVCV) sites; green: dispersed Gypsy-like retroelement junction probe at all centromeres (overlapping yellow signals); blue: 5S rDNA. Scale bar, 10 μ m. **c**, Distribution of *dTph1*-like transposons in *P. axillaris* and *P. inflata*. **d**, Duplicated gene families in functional categories showing *Petunia*-specific and balanced families. **e**, Venn diagram based on the gene family cluster analysis from five Solanaceae species. The numbers below the species name indicate the number of protein-coding genes (top) and number of gene family clusters (bottom).

average 200 Mb in length (three times that of *Solanum lycopersicum* or *S. tuberosum*), as a larger genome is distributed over 7 rather than 12 chromosomes (Fig. 2b). Chromosomal organization in *Petunia* is thus

different compared to other Solanaceae and this together with high DNA transposon frequency and mobility has an effect on genome evolution, meiotic recombination and homogenization events¹⁰.

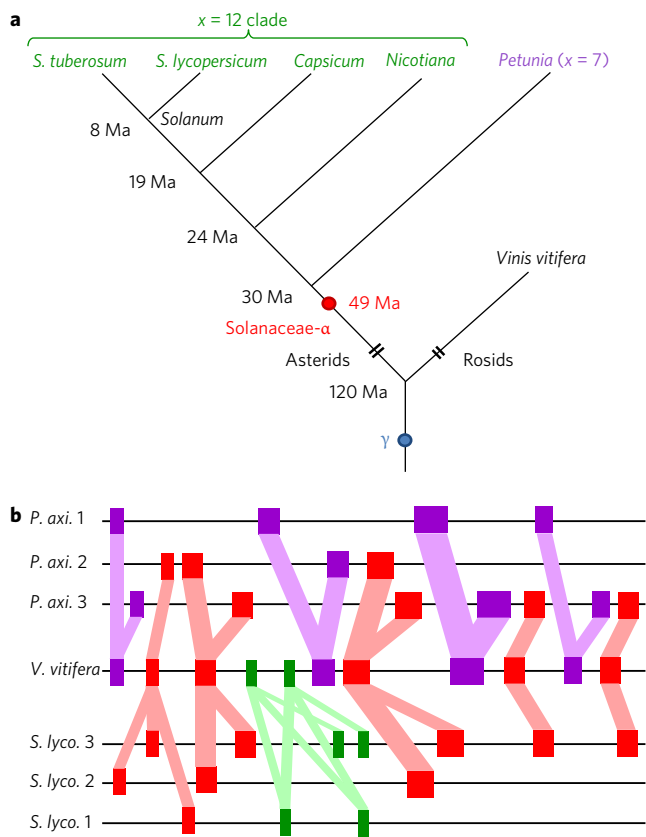


Figure 3 | Genome triplication and fractionation in *Petunia*.

a. Paleohexaployploid history of the Solanaceae family, showing the gamma hexaploidy event shared with most eudicots and the family-specific Solanaceae- α hexaploidy event. We place Solanaceae- α before the divergence of *Petunia* and the $x = 12$ crown-group (~30 and 49 Myr ago (Ma))⁵. **b.** Differential gene fractionation of *Petunia* (*P. axillaris*, shortened to *P. axi.*) and tomato (*S. lycopersicum*, *S. lyco.*) in comparison with grape (*V. vitifera*). One grape genomic region is syntenic to three regions of *Petunia* and tomato. Genes in red represent shared/retained genes of *Petunia* and tomato whereas green (retained in *Petunia*/lost in tomato) and purple (retained in tomato/lost in *Petunia*) represent independently fractionated genes. For details see Supplementary Note 5.

DNA transposons. DNA transposons are five times more abundant in the *Petunia* genome than in *Nicotiana tomentosiformis* and *S. lycopersicum* (Fig. 2a). The identification and cloning of the small endogenous non-autonomous hAT-like defective transposon of *petunia hybrida*1 (*dTph1*), which is highly mobile in the *P. hybrida* line W138 (Fig. 1d), has allowed the development of efficient tools for forward and reverse genetics¹¹. The *P. axillaris* and *P. inflata* genomes contain 16 and 21 *dTph1* copies, respectively (Fig. 2c and Supplementary Note 3). This is similar to the numbers in most *P. hybrida* accessions, but far fewer than in the old *P. hybrida* accession R27 or the hyperactive accession W138 with over 200 copies. Comparison of *dTph1* insertion loci in *P. axillaris* and *P. inflata* with W138 provides evidence that both species indeed contributed to W138. *dTph1* distribution patterns in wild *P. axillaris* accessions from Uruguay showed comparable low *dTph1* copy numbers and a very low overall locus diversity, suggesting that *dTph1* transposition activity is largely suppressed in natural populations, but was reactivated after the interspecific crosses leading to the domesticated *P. hybrida*. Seven previously identified *dTph1*-like elements and one newly discovered element, *dTPh12*, are present in both genomes, demonstrating their ancient origin (Fig. 2c.) The expansion of

different transposable elements—*dTph1* in W138 and *dTph7* in the two wild species—suggests that, despite extensive homology in their terminal inverted repeat regions, they may require different transacting factors for their mobility.

Endogenous pararetroviruses. Integrated copies of *Caulimoviridae* are widespread in plant nuclear genomes including the Solanaceae¹². These DNA viruses are characterized by a *gag* region with RNA binding domains and a *pol* region that codes for reverse transcriptase and RNase H (ref. 13). The *P. axillaris* and *P. inflata* genomes show near-complete but also degenerated and rearranged copies of *Petunia vein clearing virus* (PVCV, a *Petuvirus*¹⁴, Supplementary Note 2). Their structures suggest that the behaviour and mode of integration are similar for both species, and parallel the types of complex rearrangements seen in the banana genome¹⁵. Fluorescent *in situ* hybridization of these sequences (Fig. 2b) showed signals near the centromeres of two chromosome pairs in *P. axillaris* adjacent to LTR retroelements. Phylogenetic analysis of single insertions showed repeated incidents of homogenization. Such homologous sequences contributed to the tandem array structures found in *P. hybrida* that are prerequisites of inducible and disease generating viruses¹⁴.

Gene families and tandem duplications. Polypeptide sequences from *P. axillaris*, *P. inflata*, *S. lycopersicum*, *S. tuberosum*, *Nicotiana benthamiana* and *Arabidopsis thaliana* were clustered into gene families. This analysis (Supplementary Note 4) grouped 39.2% of the genes into 27,600 gene families, ranging in size from 2 to 1,026 members. Most gene families followed the accepted evolutionary lineage (Fig. 3a), with the *Petunia*, *Solanum* and Solanaceae clades sharing gene families far more often than other species groupings (Fig. 2e). Two contrasting sets of gene families that are almost mutually exclusive were found: *Petunia*-specific families and balanced shared families (Fig. 2d). The size distributions of tandem gene arrays in *P. axillaris*, *P. inflata* and *S. lycopersicum* were quite similar, with each species containing about 8,000 genes in 3,000 tandem arrays.

Paleopolyploidy history of *Petunia*. Analysis of the *Petunia* data allowed us to infer the history of polyploidy not only for *Petunia* but for the entire Solanaceae. Polyploidy is ubiquitous among angiosperms, with many independent lineage-specific paleopolyploidy events associated with changes in genome structure and gene retention and loss^{16,17}. Most paleopolyploidy events are the result of ancient genome duplications (paleotetraploidies), but ancient triplications (paleohexaploidies) have also been identified, for example the gamma event near the origin of Eudicots (Fig. 3a) first detected by analysis of the *Vitis vinifera* (grape) genome¹⁸. Similarly, genome analysis of *S. lycopersicum* suggested that there was a triplication at some point during the evolution of the Solanaceae family¹⁹. *Petunia* as a sister to the $x = 12$ crown-group clade of the Solanaceae⁵ is an ideal species to investigate the timing and nature of this event (Fig. 3a).

Using whole-genome synteny analyses of our *de novo* assemblies, we identified genomic regions of collinearity between *S. lycopersicum* and *P. axillaris*, using *V. vinifera* as an outgroup (Supplementary Note 5). Inferring their relative timing by analysing synonymous changes (K_s), we show that *Petunia* shares the older gamma paleopolyploidy event with other higher eudicots, and the more recent paleohexaploidy event with *S. lycopersicum*. We then can infer that the Solanaceae event occurred at least 30 Myr ago (Fig. 3a). Microsynteny analysis shows the process of gene fractionation following the polyploidization event, and reveals that the *S. lycopersicum* genome has retained fewer genes than the *Petunia* genome, thus contributing to the relatively large genetic fraction found in *Petunia* (Fig. 2a). From the fractionation patterns observed, (Fig. 3b), we predict a first and common incomplete gene

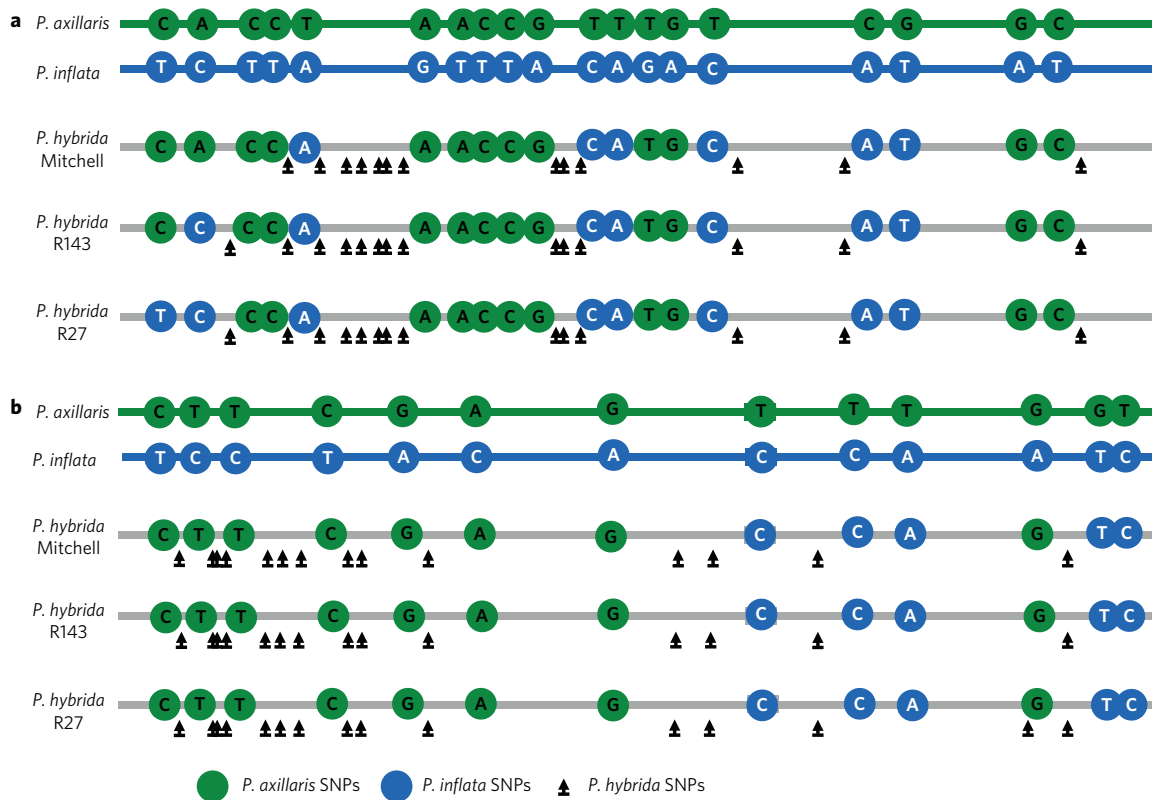


Figure 4 | A large fraction of *P. hybrida* genes may be the result of gene conversion. a,b, Two examples of genes with mixed parentage in *P. hybrida* accessions Mitchell, R143 and R27. **a**, PME inhibitor; *Peaxi162Scf00002g00042* and *Peinf101Scf01857g01001* for *P. axillaris* N and *P. inflata* S6, respectively. **b**, Stress-induced phosphoprotein; *Peaxi162Scf00002g00511* and *Peinf101Scf01857g08047* for *P. axillaris* N and *P. inflata* S6, respectively. Green and blue circles represent SNPs specific to *P. axillaris* N and *P. inflata* S6, respectively. Small black arrows represent SNPs present only in the *P. hybrida* lines.

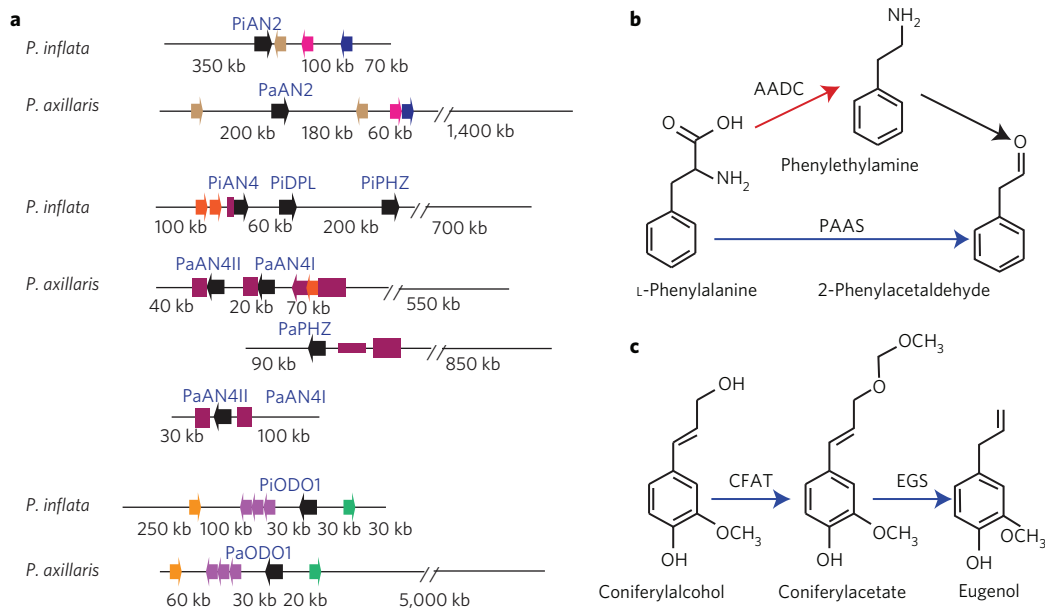


Figure 5 | Pollinator attraction. a, Genome dynamics at different MYB gene regions. Genomic regions around AN2-like genes are highly rearranged with few conserved genes, whereas synteny is conserved around the MYB ODO1 involved in scent production. Black arrows, MYB genes. Different coloured arrows, other syntenic genes. Purple blocks, various repeat sequences. **b**, Biosynthesis of 2-phenylacetaldehyde is different in *Petunia* and *S. lycopersicum*. Red and blue arrows depict enzymatic steps characterized in *S. lycopersicum* and *Petunia*, respectively. The black arrow represents a predicted activity in *S. lycopersicum*. **c**, Biosynthesis of eugenol in *Petunia*. Although tomato also makes eugenol, homologues of the two genes involved seem to be absent. AADC, aromatic L-amino acid decarboxylase; PAAS, phenylacetaldehyde synthase; CFAT, CoA:coniferyl alcohol acetyltransferase; EGS, eugenol synthase.

fractionation step in both *Petunia* and *S. lycopersicum* and a second step after their divergence in *S. lycopersicum* only. This may have contributed to the separation of the lineages, similar to that observed in *Saccharomyces* yeasts²⁰ but until now not yet described in flowering plants.

Origin of the *P. hybrida* genomes. Comparisons of the two genome sequences with transcriptomics data from three unrelated *P. hybrida* lines, namely Mitchell, R27 and R143 (Fig. 1d, see Supplementary Note 6) revealed a complex history of the garden petunia. The majority of the ~20,000 analysed genes could be assigned to *P. axillaris* (~15,000), with only ~600 genes assigned to *P. inflata*. This indicates that the *P. inflata* parent makes only a minor contribution to the *P. hybrida* gene space. One possible explanation for this preponderance of the white parent genome could be that breeding for different colours and colour patterns required a background with recessive mutations in the pigmentation pathway. About 2,000 *P. hybrida* genes contain a high percentage of non-specific SNPs potentially derived from an unknown ancestor.

Approximately 1,500 genes of mixed parentage were identified, with blocks of SNPs similar to *P. axillaris* and other blocks similar to *P. inflata* (Fig. 4). These unusual constellations are conserved between the three *P. hybrida* accessions and may involve gene conversion, random repair of heteroduplexes, contributions of unknown parents or unknown mechanisms. Gene conversion events have been previously reported in plastids²¹ and polyploids²² but they have not been reported before in hybrids (or species of hybrid origin). Definitive answers, especially to the question whether this phenomenon is restricted to transcribed regions will require transcriptome and whole-genome sequencing of multiple *P. hybrida* accessions.

Genes encoding pollinator attraction traits. Bee-pollinated *P. inflata* has purple flowers that produce only a limited amount of scent, whereas the flowers of the hawkmoth-pollinated *P. axillaris* are strongly scented and white (Fig. 1a). Colour and scent influence the attraction of pollinators and thereby cause reproductive isolation and ultimately speciation. Speciation of *P. axillaris* from a *P. inflata*-like ancestor involved the loss of anthocyanin pigments and the gain of volatiles⁴. Thus the genes that caused the changes in these two traits are potential speciation genes. The anthocyanin backbone is synthesized from phenylalanine by nine enzymatic steps followed by specific decorations of the backbone that modify the absorption spectrum. To address how the change in anthocyanin pigmentation of *Petunia* flowers evolved, we compared all known regulatory and structural genes (Supplementary Note 7).

Both *Petunia* genomes contain a complete set of functional genes for the core pathway (*CHS*, *CHI*, *DFR*, *ANS*, *3GT*, *5GT* and *AAT*); however, some of the decorating enzymes are compromised in *P. axillaris*. The steps in the pathway, from *DFR* on, are regulated by a ternary complex consisting of MYB, bHLH and WD40 transcription factors. The bHLH and WD40 components are functional, but in all *P. axillaris* accessions, the MYB factor AN2 has been inactivated because of independent mutations in the coding region^{23,24} (Fig. 1d). The only known function of AN2 is to regulate anthocyanin synthesis in petal lobes and this lack of pleiotropic effects makes AN2 a preferred target of selection in the natural habitat.

In *P. hybrida*, four related MYB factors activate the anthocyanin biosynthetic pathway in different tissues: AN2 controls anthocyanin deposition in the petal limb, AN4 in the anthers and DPL and PHZ in green tissues. Unlike AN2, the AN4, DPL and PHZ coding sequences have remained intact in *P. axillaris*. Based on *P. hybrida* data, differential expression of AN4 might be responsible for the shift in anther colour from purple in *P. inflata* to yellow in *P. axillaris*.

The genomic regions containing these four MYB genes have undergone massive rearrangements since the separation of the two species estimated at 0.9 Myr ago, possibly influenced by transposon or retroelement activities found in the vicinity (Fig. 5a). As a consequence, the synteny between the corresponding regions of *P. axillaris* and *P. inflata* has been largely destroyed and gene spacing altered. *P. axillaris* AN4 is duplicated and inactivated subsequently in anthers because of large insertions of transposon-like sequences in the promoter. Similar insertion events are visible around the other anthocyanin MYB genes. Instead, the genomic regions containing other anthocyanin regulators (*AN1*, *JAF13*, *AN11*) and other MYBs involved in vacuolar pH regulation and scent production show strong conservation of the synteny between the two *Petunia* species. Thus, the AN2-like MYBs reside in an exceptionally dynamic region of the genome. Although lack of pleiotropy makes AN2-like MYBs preferential targets of selection, genomic rearrangements may have provided the mechanism responsible for the remarkable spatial and temporal diversity of anthocyanin pigmentation patterns.

Exceptional dynamics of the regions containing the MYB regulators of the anthocyanin pathway is not restricted to *Petunia*. The regions in *S. lycopersicum* share little synteny with either of the two *Petunia* species indicating that large rearrangements occurred after the separation of the genera. In the more distantly related *Mimulus guttatus*, we also find duplications and rearrangements to have taken place after the separation of the ancestors of Solanaceae and Phrymaceae. Thus, genome dynamics of AN2-type MYB factors may be a general mechanism that caused the diversity of floral pigmentation patterns across angiosperms.

P. axillaris emits an abundant blend of floral benzenoid and phenylpropanoid volatiles whereas *P. inflata* only emits benzaldehyde. A comparison of all structural and regulatory genes known to be involved in floral scent synthesis indicates that all the known biosynthetic and regulatory genes encode functional proteins (Supplementary Note 8). Thus, the increase in complexity and concentration of volatiles accompanying the shift to moth pollination in *P. axillaris* involved mutations in *cis*-acting regulatory elements or the mutation of as yet unknown transcriptional regulators.

Petunia uses a single enzyme for the biosynthesis of 2-phenylacetaldehyde²⁵ whereas *S. lycopersicum* utilizes an amino acid decarboxylase plus a yet unidentified amine oxidase (Fig. 5b)²⁶. Interestingly, the *S. lycopersicum* genome does harbour a homologue of the *Petunia* gene, but this is predicted to be 124 amino acids shorter than its *Petunia* homologue and presumably inactive. Furthermore, although *S. lycopersicum* is also known to produce eugenol²⁷, homologues of the two involved enzymes appear to be

Box 1 | MicroRNAs.

Small RNA sequencing of young flower buds and mapping of candidates in the genome sequences confirm the presence of 44 conserved miRNAs in *Petunia*, belonging to 30 families and corresponding to 140 *MIR* loci, in line with other species. Only two loci were unique to *P. axillaris* (*MIR171g*, *MIR398b*) and two unique and one truncated to *P. inflata* (*MIR160d*, *MIR397b*, *MIR477*), and *MIR* sequences and organization in the genome were largely conserved. MiRNA expression profiles were also highly similar between the two species and comparable to tomato and potato¹⁹, with highest expressions for miR166, miR159 and miR319, known for their involvement in floral organ development, and low expression for miRNA169c (*BLIND*), a well-studied regulator of floral whorl identity in *Petunia* (Fig. 1d) and *Antirrhinum*²⁸. Predicted miRNA targets included genes involved in development and metabolic pathways. For additional information, see Supplementary Note 9.

Box 2 | Symbiosis with fungi.

A good example of *Petunia* as a model system is the study of the symbiotic interactions with fungi. In the arbuscular mycorrhiza (AM) with the Glomeromycota, the fungal hyphae function as an extension of the root system that enhances the acquisition of mineral nutrients, primarily phosphate. This symbiosis is widespread amongst land plants, but is lacking in the Brassicaceae (including *Arabidopsis thaliana*). Symbiosis signalling involves a family of lysine motive (LysM) receptor-like kinases (LysM-RLK) in the host, which perceive specific microbial signals⁴⁴. LysM-RLKs activate a signalling pathway that is shared with root nodule symbiosis, a symbiotic interaction restricted to the Fabaceae. The comparison between *Petunia* and tomato versus the legumes *Lotus japonicus* and *Medicago truncatula* revealed that the two Solanaceae have considerably smaller gene families than the two legumes with 10/11 and 14 versus 17 and 18 LysM-RLK members, respectively. The expansion of the LysM-RLK family during the evolution of nodule symbiosis in the legumes⁴⁵ will help to understand the evolution of two fundamentally different symbiotic interactions. Large-scale genomic and transcriptional analysis of two transcription factor families revealed that several GRAS genes are regulated during AM symbiosis, whereas *AP2/ERF* genes are induced during adventitious root formation. For additional information, see Supplementary Note 10.

absent (Fig. 5c). Thus, the Solanaceae have evolved multiple strategies for the synthesis of C6–C2 and C6–C3 compounds.

***Petunia* as a model for comparative research of gene function.**

High throughput DNA sequencing makes it possible to compare DNA sequences and RNA expression patterns across a wide variety of taxa. However, functional analysis is necessary to determine if

Box 3 | Self-incompatibility.

In the Solanaceae, self-fertilization is prevented by S-RNase-mediated gametophytic self-incompatibility (GSI), which is based on the ability to reject pollen from a plant expressing a matching S-locus haplotype, while accepting pollen from individuals whose haplotypes do not match that of the stylar parent⁴⁶. During an incompatible pollination, the growth of 'self' pollen tubes is inhibited by the action of an imported, cognate, ribonuclease, the S-RNase. In compatible pollinations, the action of non-self S-RNases is inhibited by ubiquitination and degradation by a SCF^{SLF} E3 ubiquitin ligase, of which distinct SLF (S-locus F-box) proteins are the recognition component.

We found that the S-RNase in *P. axillaris* is identical to the S₁-RNase from *P. hybrida*⁴⁷. This finding is consistent with the hypothesis that self-incompatibility in *P. hybrida* was inherited from both of the progenitor species⁴³. In addition, we identified 20 SLF genes in the genome of *P. axillaris* and 29 SLF genes in *P. inflata*, together representing 20 different SLF variants. Several (2–5) SLF genes in each species were found linked on the same scaffold; in *P. axillaris*, the S_{ax1}-RNase was linked to SLF10. These data support current models, which propose that the pollen and style components of GSI are tightly linked in a region of the chromosome that is suppressed for recombination. Suppression of recombination is an important mechanism to preserve co-adapted gene complexes. Our long-range sequencing strategy is an important step towards characterizing a complete S-locus, as a means to better understand the evolution of gametophytic self-incompatibility. For additional information, see Supplementary Note 11.

Box 4 | The circadian clock.

Floral volatiles serve to attract pollinators but will also be perceived by unwanted herbivores⁴⁸. Volatile emission in *P. axillaris* is under circadian control, peaking at dusk when its nocturnal hawkmoth pollinator visits⁴⁹. Although this specific output is known quite well, the genetic structure of the circadian clock itself is understudied in *Petunia*. In *Arabidopsis*, the clock consists of three loops, the morning, core and evening loop, based on their expression pattern. The current hypothesis is that gene dosage effect is important for clock function⁵⁰. Comparison of the *Petunia* genomes with other Solanaceae indicates that the circadian clock has undergone a deep restructuring in the Solanaceae and each species seems to have a different set of genes (Supplementary Note 12). *Petunia* and the rest of the Solanaceae share single orthologues for *LHY*, *TOC1*, *PRR3* and the MYB transcription factor *LUX*. In contrast *PRR7*, *PRR5*, *GIGANTEA*, *ELF3* and *ELF4* are in some cases duplicated or triplicated. *P. inflata* has a larger number of evening loop paralogues than *P. axillaris*. The *GI* gene is present in two copies in *P. axillaris* with three in *P. inflata*, and there are three *ELF3* copies in *P. axillaris* and four in *P. inflata*. These results suggest strong purifying selection on some of the clock components but others may have undergone a rapid subfunctionalization or redeployment. Comparative analyses will help to understand how clock structure is adjusted to optimize specific outputs thus allowing adaptation to different environments. For additional information, see Supplementary Note 12.

sequence conservation can be equated with conservation of gene function. Good examples are the *AP2* and *BL/FIS* (*MIR169*) genes, which, although very well conserved at the sequence level, can perform divergent developmental functions in different species²⁸.

In general, a larger diversity of genetic model systems will be essential to link sequence information with function. Ease of cultivation and propagation, highly efficient genetics and transformation make *Petunia* an attractive model system for comparative analysis of gene function (see Boxes 1–4). The availability of high-quality genome sequences further increases the utility of the asterid *Petunia* not only for testing the generality of conclusions based on the rosid *Arabidopsis* or the monocot rice, but also for studying biological phenomena in a species with different genome organization, biochemistry, development, ecology and evolution.

Methods

Genome sequencing, assembly and annotation. Plants were grown and DNA was extracted following the methods described at Supplementary Note 1.

Illumina libraries with 0.17-, 0.35-, 0.5-, 0.8-, 1-, 2-, 5-, 8- and 15-kb inserts were sequenced at BGI-Shenzhen and University of Illinois, Roy J. Carver Biotechnology. PacBio *P. axillaris* DNA library was sequenced with P4/C2 chemistry.

Illumina reads were processed using Fastq-mcf (quality filtering; <https://code.google.com/p/ea-utils/wiki/FastqMcf>), PRINSEQ (duplication filtering; <http://prinseq.sourceforge.net/>) and Musket (error correction; <http://musket.sourceforge.net/>). PacBio reads were processed using the SMRT Analysis pipeline (v.2.0.1; <https://github.com/PacificBiosciences/SMRT-Analysis>).

Both genomes were assembled with SOAPdenovo⁵⁰ with different k-mer sizes. For both genomes, k-mer = 79 showed the best statistics. Gaps between contigs were completed using GapCloser⁵⁰. Additionally for *P. axillaris*, PacBio reads were integrated in four different steps: (1) Rescaffolding of the Illumina contigs using the PacBio reads and the AHA assembler⁵¹; (2) Gap filling using PBJelly⁵²; (3) Rescaffolding using the Illumina pair data and SSPACE⁵³; (4) Last round of gap filling using PBJelly⁵².

Genome size estimation was performed through the k-mers abundance distribution⁵⁴ (k-mer = 31). Heterozygosity was estimated mapping the Illumina reads to the assemblies using Bowtie2⁵⁵, calling SNPs using FreeBayes⁵⁶ and annotating the SNPs using SnpEff⁵⁷.

The genome structural annotation was performed using Maker-P⁵⁸: (1) SNAP and Augustus as *ab initio* gene predictors; (2) Exonerate as experimental based predictor

with 454 and Illumina RNAseq reads and protein sequences from different protein datasets. RNAseq Illumina data was mapped using Tophat2³⁹. tRNAs were annotated using tRNAscan (<http://lowelab.ucsc.edu/tRNAscan-SE/>).

The gene functional annotation was performed by sequence homology search with different protein datasets using BlastP⁴⁰ and protein domains search using InterProScan⁴¹. Functional annotations were integrated using AHRD (<https://github.com/groupschoof/AHRD>). See Supplementary Note 1.

Repetitive elements analysis. Repeat annotation was performed using RepeatModeler (v1.0.8; <http://www.repeatmasker.org/RepeatModeler.html>), RepeatMasker (v4.0.5; <http://www.repeatmasker.org>) with the repeat database Repbase (release 20140131; <http://www.girinst.org/repbase/>) and Geneious (v7.1.4; <http://www.geneious.com>). Identification of PVCV-like and EPRV elements was performed using BlastN and TblastN⁴⁰. The identified sequences were aligned with ClustalW (MEGA5 package; <http://www.megasoftware.net/>) and then manually curated. RepeatExplorer (<http://www.repeatexplorer.org/>) and other methods were used to extend the analysis to unassembled repeats. Fluorescent *in situ* hybridization was performed in root tips from young *P. axillaris* and *P. inflata* plants for 5S rDNA and three PVCV viral probes following the procedure described in Supplementary Note 2.

The detection of *dTph1* loci in *P. hybrida* W138 was performed through a BLAST⁴⁰ search of the *P. axillaris* and *P. inflata* *dTph1* elements including the 500 bp of flanking sequence against the TFS W138 collection⁴³. Polymorphisms found in the genomic flanking regions were used to identify the species of origin. *dTph1* elements were identified in a *P. axillaris* population using a modification of the methodology described in Supplementary Note 3.

Whole-genome duplication, tandem duplications and gene family analysis.

Whole-genome collinear analysis was performed using SynMap and microsynteny analysis were performed using GEvo in the comparative genomics platform, CoGe⁴². See Supplementary Note 5.

The gene family analysis included *Solanum lycopersicum*, *S. tuberosum*, *Nicotiana benthamiana* and *Arabidopsis thaliana* protein sets using BlastP (v2.2.27)⁴⁰ on an all-versus-all comparison and grouping the genes into families with OrthoMCL, v2.0.8. See Supplementary Note 4.

Small RNA sequencing and analysis. Total RNA was purified and small RNA libraries were prepared and sequenced and analysed following the methods described in Supplementary Note 9. Annotation and identification was performed using Perl scripts, mirDeep-P (v1.3; <http://sourceforge.net/projects/mirdeep/>), Bowtie (v1.0.1) and CLCbio, based on identity to miRNAs in *Arabidopsis* and Solanaceae spp. Secondary structures of pre-miRNAs were predicted with RNAfold (<http://rna.tbi.univie.ac.at/cgi-bin/RNAfold.cgi>). miRNA target genes were predicted using TargetFinder (v1.6). See Supplementary Note 9.

***Petunia hybrida* transcripts comparison.** *Petunia hybrida* (accessions Mitchell, R27 and R143) reads were mapped to the *P. axillaris* genome (v1.6.2) using Bowtie2³⁵. SNPs were called using FreeBayes³⁶ and annotated using Snpeff³⁷. Exons and genes were assigned to *P. axillaris* or *P. inflata* based in the SNP data using a Perl script. Five categories were used: Homozygous *P. axillaris*; Homozygous *P. inflata*; Heterozygous *P. axillaris/P. inflata*; Homozygous *P. axillaris/P. inflata* and unclear assignment. Homozygous SNPs for the genes with exons from both species were confirmed aligning *P. hybrida* EST using Exonerate (v2.2.1; <http://www.ebi.ac.uk/about/vertebrate-genomics/software/exonerate>). Gene Set Enrichment Analysis (GSEA) was performed using the Bioconductor package TopGO (v2.22.0; <http://bioconductor.org/packages/topGO/>). See Supplementary Note 6.

Gene data mining. The specific identification of genes for *P. axillaris* and *P. inflata* genomes for colour and scent, root-specific pathways, self-incompatibility and circadian clock was performed through a BlastN/BlastP sequence homology search. Blast GUI, JBrowser (<http://jbrowse.org/>) and WebApollo (<http://genomearchitect.org/>) were installed in a server to search and manually curate the gene structures of the identified genes. See Supplementary Notes 7, 8 and 10–12.

The *P. axillaris* and *P. inflata* genome sequences are available on the Sol Genomics Network (SGN) at https://solgenomics.net/organism/Petunia_axillaris/genome and https://solgenomics.net/organism/Petunia_inflata/genome, respectively.

Received 12 October 2015; accepted 22 April 2016;
published 27 May 2016

References

- National Agricultural Statistics Service. *Floriculture Crops 2014 Summary* (US Department of Agriculture, 2015); <http://usda.mannlib.cornell.edu/usda/nass/FlorCrop/2010s/2015/FlorCrop-06-04-2015.pdf>
- Napoli, C., Lemieux, C. & Jorgensen, R. Introduction of chimeric chalcone synthase gene into *Petunia* results in reversible co-suppression of homologous genes *in trans*. *Plant Cell* **2**, 279–289 (1990).
- van der Krol, A. R., Mur, L. A., Beld, M., Mol, J. N. M. & Stuitje, A. R. Flavonoid genes in *Petunia*: addition of a limited number of gene copies may lead to a suppression of gene expression. *Plant Cell* **2**, 291–299 (1990).
- Sheehan, H., Hermann, K. & Kuhlemeier, C. Color and scent: how single genes influence pollinator attraction. *Cold Spring Harb. Symp. Quant. Biol.* **77**, 117–133 (2012).
- Saerkinen, T., Bohs, L., Olmstead, R. G. & Knapp, S. A phylogenetic framework for evolutionary study of the nightshades (Solanaceae) a dated 1000-tip tree. *BMC Evol Biol* **13**, 214 (2013).
- Segatto, A. L. A., Ramos-Fregonezi, A. M. C., Bonatto, S. L. & Freitas, L. B. Molecular insights into the purple-flowered ancestor of garden petunias. *Am. J. Bot.* **101**, 119–127 (2014).
- Stehmann, J. R., Lorenz-Lemke, A. P., Freitas, L. B. & Semir, J. in *Petunia: Evolutionary, Developmental and Physiological Genetics* 2nd edn (eds Gerats, T. & Strommer, J.) 1–28 (Springer, 2009).
- Sink, K. C. in *Petunia: Monographs on Theoretical and Applied Genetics* Vol. 9 (ed. Sinek, K. C.) 3–9 (Springer, 1984).
- White, J. & Rees, H. Chromosome weights and measures in *Petunia*. *Heredity* **58**, 139–143 (1987).
- Heslop-Harrison, J. P. Genome evolution: extinction, continuation or explosion? *Curr. Opin. Plant Biol.* **15**, 115–121 (2012).
- Vandenbussche, M. *et al.* Generation of a 3D indexed *Petunia* insertion database for reverse genetics. *Plant J.* **54**, 1105–1114 (2008).
- Geering, A. D. W. *et al.* Endogenous florendoviruses are major components of plant genomes and hallmarks of virus evolution. *Nature Commun.* **5**, 5269 (2014).
- Hansen, C. & Heslop-Harrison, J. Sequences and phylogenies of plant pararetroviruses, viruses, and transposable elements. *Adv. Bot. Res.* **41**, 165–193 (2004).
- Richert-Pöggeler, K. R., Noreen, F., Schwarzacher, T., Harper, G. & Hohn, T. Induction of infectious petunia vein clearing (pararetro) virus from endogenous provirus in petunia. *EMBO J.* **22**, 4836–4845 (2003).
- D'Hont, A. *et al.* The banana (*Musa acuminata*) genome and the evolution of monocotyledonous plants. *Nature* **488**, 213–217 (2012).
- Jiao, Y. *et al.* Ancestral polyploidy in seed plants and angiosperms. *Nature* **473**, 97–100 (2011).
- Soltis, D. E., Bell, C. D., Kim, S. & Soltis, P. S. Origin and early evolution of angiosperms. *Ann. NY Acad. Sci.* **1133**, 3–25 (2008).
- Jaillon, O. *et al.* The grapevine genome sequence suggests ancestral hexaploidization in major angiosperm phyla. *Nature* **449**, 463–467 (2007).
- Tomato Genome Consortium. The tomato genome sequence provides insights into fleshy fruit evolution. *Nature* **485**, 635–641 (2012).
- Scannell, D. R., Byrne, K. P., Gordon, J. L., Wong, S. & Wolfe, K. H. Multiple rounds of speciation associated with reciprocal gene loss in polyploid yeasts. *Nature* **440**, 341–345 (2006).
- Khakhlova, O. & Bock, R. Elimination of deleterious mutations in plastid genomes by gene conversion. *Plant J.* **46**, 85–94 (2006).
- Salmon, A., Udall, J. A., Jeddleloh, J. A. & Wendel, J. Targeted capture of homoeologous coding and noncoding sequence in polyploid cotton. *G3* **2**, 921–930 (2012).
- Quattrocchio, F. *et al.* Molecular analysis of the *anthocyanin2* gene of *Petunia* and its role in the evolution of flower color. *Plant Cell* **11**, 1433–1444 (1999).
- Hoballah, M. E. *et al.* Single gene-mediated shift in pollinator attraction in *Petunia*. *Plant Cell* **19**, 779–790 (2007).
- Kaminaga, Y. *et al.* Plant phenylacetaldehyde synthase is a bifunctional homotetrameric enzyme that catalyzes phenylalanine decarboxylation and oxidation. *J. Biol. Chem.* **281**, 23357–23366 (2006).
- Tieman, D. *et al.* Tomato aromatic amino acid decarboxylases participate in synthesis of the flavor volatiles 2-phenylethanol and 2-phenylacetaldehyde. *Proc. Natl Acad. Sci. USA* **103**, 8287–8292 (2006).
- Tikunov, Y. M. *et al.* Non-smoky glycosyltransferase1 prevents the release of smoky aroma from tomato fruit. *Plant Cell* **25**, 3067–3078 (2013).
- Cartolano, M. *et al.* A conserved microRNA module exerts homeotic control over *Petunia hybrida* and *Antirrhinum majus* floral organ identity. *Nature Genet.* **39**, 901–905 (2007).
- Sierro, N. *et al.* Reference genomes and transcriptomes of *Nicotiana sylvestris* and *Nicotiana tomentosiformis*. *Genome Biol.* **14**, R60 (2013).
- Luo, R. *et al.* SOAPdenovo2: an empirically improved memory-efficient short-read de novo assembler. *Gigascience* **1**, 18 (2012).
- Bashir, A. *et al.* A hybrid approach for the automated finishing of bacterial genomes. *Nature Biotechnol.* **30**, 701–707 (2012).
- English, A. C. *et al.* Mind the gap: upgrading genomes with pacific biosciences RS long-Read sequencing technology. *PLoS One* **7**, e47768 (2012).
- Boetzer, M., Henkel, C. V., Jansen, H. J., Butler, D. & Pirovano, W. Scaffolding pre-assembled contigs using SSPACE. *Bioinformatics* **27**, 578–579 (2011).
- Li, R. *et al.* The sequence and de novo assembly of the giant panda genome. *Nature* **463**, 311–317 (2010).
- Langmead, B. & Salzberg, S. L. Fast gapped-read alignment with Bowtie 2. *Nature Methods* **9**, 357–359 (2012).
- Garrison, E. & Marth, G. Haplotype-based variant detection from short-read sequencing. Preprint at <http://arxiv.org/abs/1207.3907> (2012).
- Cingolani, P. *et al.* A program for annotating and predicting the effects of single nucleotide polymorphisms, SnpEff. *Fly* **6**, 80–92 (2014).

38. Campbell, M. S. *et al.* MAKER-P: a tool kit for the rapid creation, management, and quality control of plant genome annotations. *Plant Physiol.* **164**, 513–524 (2014).
39. Trapnell, C., Pachter, L. & Salzberg, S. L. TopHat: discovering splice junctions with RNA-Seq. *Bioinformatics* **25**, 1105–1111 (2009).
40. Altschul, S. F. *et al.* Gapped BLAST and PSI-BLAST: a new generation of protein database search programs. *Nucleic Acids Res.* **25**, 3389–3402 (1997).
41. Mulder, N. & Apweiler, R. *InterPro and InterProScan* Vol. 396, 59–70 (Humana, 2007).
42. Lyons, E. & Freeling, M. How to usefully compare homologous plant genes and chromosomes as DNA sequences. *Plant J.* **53**, 661–673 (2008).
43. Van den Broeck, D. *et al.* Transposon display identifies individual transposable elements in high copy number lines. *Plant J.* **13**, 121–129 (1998).
44. Antolin-Llovera, M. *et al.* Knowing your friends and foes – plant receptor-like kinases as initiators of symbiosis or defence. *New Phytol.* **204**, 791–802 (2014).
45. Limpens, E., van Zeijl, A. & Geurts, R. Lipochitooligosaccharides modulate plant host immunity to enable endosymbioses. *Ann. Rev. Phytopathol.* **53**, 15.1–15.24 (2015).
46. Sims, T. L. & Robbins, T. P. in *Petunia: Evolutionary, Developmental and Physiological Genetics* (eds Gerats, T. & Strommer, J.) 85–106 (Springer, 2009).
47. Clark, K. R., Okuley, J. J., Collins, P. D. & Sims, T. L. Sequence variability and developmental expression of S-alleles in self-incompatible and pseudo-self-compatible *Petunia*. *Plant Cell* **2**, 815–826 (1990).
48. Kessler, D., Diezel, C., Clark, D. G., Colquhoun, T. A. & Baldwin, I. T. *Petunia* flowers solve the defence/apparency dilemma of pollinator attraction by deploying complex floral blends. *Ecol. Lett.* **16**, 299–306 (2013).
49. Sponberg, S., Dyhr, J. P., Hall, R. W. & Daniel, T. L. Luminance-dependent visual processing enables moth flight in low light. *Science* **348**, 1245–1248 (2015).
50. Lou, P. *et al.* Genetic architecture of the circadian clock and flowering time in *Brassica rapa*. *Theor. Appl. Genet.* **123**, 397–409 (2011).

Acknowledgements

We dedicate this work to Tom Gerats in honour of his lifelong contributions to petunia research, and we thank him for generously sharing his vast knowledge with all of us.

We thank H. Puchta for advice on Fig. 4, R. Köpfler for IT and graphics support, and K. Esfeld for carefully reading the manuscript. This work was carried out without dedicated

funding. We acknowledge following agencies who support our work on *Petunia*: NWO-ALW grant 022.001.018 (M.B.); Marie Curie Independent Fellowship (L.G.); Swiss NSF grant 31003A_159493 and NCCR Plant Survival (C.K.); NWO-TOP grant 854.11.006 (R.K.); Borsa di Studio Lanzi per Genetica Agraria, Accademia dei Lincei (V.P.); NWO-ALW grant 820.02.015 (K.V.); CNRS ATIP-AVENIR award (M.V.); Deutsche Forschungsgemeinschaft grant DR411/2-1 (U.D. and P.F.); Swiss NSF grant 31003A_135778 (D.R.).

Author contributions

The authors are listed in alphabetical order except for the first two and the last three. A.B., F.Q., T.Si. and C.K. conceived and planned the work. All authors wrote or commented on the main text and supplementary notes; A.B., M.M., A.A., L.B., C.B., M.Bl., M.Bo., D.B., N.D., N.F.-P., L.G., J.H., J.H.-H., M.J., R.K., X.L., E.L., D.M., E.M., N.M., P.M., J.M., E.N., V.P., Q.Q., D.R., M.R., K.R.-P., T.R., E.S., R.S., T.Sc., C.S., H.T., S.U., M.V., K.V., G.V., R.W., J.W., Z.Y., J.Z. and F.Q. performed the experiments and analysed the data; R.B., M.D., X.L., M.P., M.S., Z.Y., T.Si. and C.K. contributed sequencing data and analysis tools.

Additional information

Supplementary information is available [online](#). Reprints and permissions information is available online at www.nature.com/reprints. General correspondence should be addressed to C.K.; correspondence about sequencing and bioinformatics should be addressed to A.B. (aurebg@vt.edu); and requests for materials should be addressed to the indicated authors in each Supplementary Note.

Competing interests

The authors declare no competing financial interests.



This work is licensed under a Creative Commons Attribution 4.0 International License. The images or other third party material in this article are included in the article's Creative Commons license, unless indicated otherwise in the credit line; if the material is not included under the Creative Commons license, users will need to obtain permission from the license holder to reproduce the material. To view a copy of this license, visit <http://creativecommons.org/licenses/by/4.0/>