

ON THE MARKET

TRUE BLUE



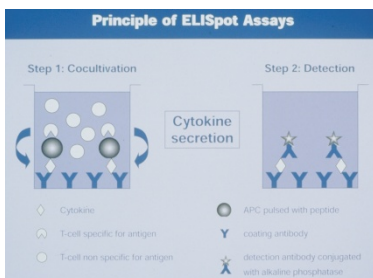
Ready-to-use BlueMax TMB microwell peroxidase substrate.

KPL offers ready-to-use BlueMax TMB **microwell peroxidase substrate**, which produces an intense blue color in the presence of peroxidase-labeled enzymes. When BlueMax is 'stopped' with acid, it is converted to a stable yellow chromophore. KPL says that stopping also enhances sensitivity for endpoint ELISA determinations.

Tel. (+1) 301-948-7755

Fax (+1) 301-948-0169

REAGENT ROUND-UP



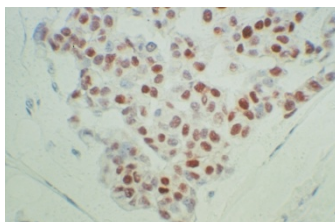
Principle of ELISpot assays.

An ELISpot **assay for the identification of human IFN- γ** is now available from MedSystems Diagnostics. The assay is said to provide a highly specific and sensitive means of analyzing T-cell responses to individual antigens (Th1 or Th2): researchers can detect human IFN- γ production by single cells. According to the company, the assay is capable of detecting one singular antigen-specific T cell out of 1,000 irrelevant cells, making it a useful tool for studying the immunological processes associated with viral infections, allergies, autoimmune diseases and neoplastic disorders. Each kit contains sufficient reagents for five 96-well microtiter plates.

Tel. (+43) 1-796-40-40-100

Fax (+43) 1-796-40-40-400

www.bendermedsystems.com



Monoclonal antibodies for hormone receptor analysis.

A new line of **monoclonal antibodies for the study of human receptors for androgen, estrogen and progesterone** is now available from InnoGenex. Clones 5B5 and 5B10 are directed against the 66-kD non-glycosylated human estrogen receptor (ER) protein. Both monoclonal antibodies are useful for immunohistochemical (IHC) analysis, western blotting and enzyme immunoassays (EIA). In IHC analysis of breast carcinoma, clone 5B5 shows broad nuclear staining whereas clone 5B10 demonstrates ER in both the nucleus and cytoplasm. Clone 11C9 recognizes both the 94-kD A form and the 120-kD B form of human progesterone receptor (PR). This monoclonal antibody can be used to study PR by western blotting, IHC and EIA. Finally, clone F39.4.1 is directed against human androgen receptor (AR). Although AR shares homology with other steroid hormone receptors, clone F39.4.1 recognizes a unique N-terminal transactivation domain that has a low degree of homology with other steroid receptors. InnoGenex says the antibody has been shown to be effective for identification of AR in human tissues; it detects AR in normal prostate, testis and female breast tissues, as well as cancers.

Tel. (+1) 925-543-1400

Fax (+1) 925-543-1405

www.innogenex.com

NEUROCHEMICALS

Alexis Biochemicals offers over two dozen **neurochemicals for vanilloid and cannabinoid receptor research**. The products include vallinoid receptor activators, ligands, capsaicin, capsaicin antagonists, antisera and other related products. There are also a variety of cannabinoid receptor antibodies and modulators.

Tel. (+1) 858-658-0065

Fax (+1) 858-658-9224

www.alexis-corp.com

IMAGE ANALYSIS

Imaging Research has introduced Elite Version 6.0 of its MCID **image analysis and quantification software**. Compatible with Windows NT 4.0 and Windows 2000 PC platforms, MCID Elite 6.0 features automation wizards and support for a range of analog and digital CCD cameras, motorized stages, shutters and filter wheels. Included are application-specific study types such as fluorescence microscopy, dynamic fluorescence, quantitative autoradiography, gel/blot analysis, stereology, 3D reconstruction and automated montaging. General-purpose image analysis features and functions, and an object-oriented macro facility are standard.

Tel. (+1) 905-688-2040

Fax (+1) 905-688-5608

www.imagingresearch.com

PAW VOLUME METER



Stoelting's paw volume meter.

Instruments that measure paw volume are standard tools for anti-inflammatory drug development. The plethysmometer, manufactured by Ugo Basile Biological Research Apparatus and now available from Stoelting, is an **instrument for measuring hyperalgesia and inflammation in small rodents**. The device features a microprocessor and a serial port for direct communication with a computer. Software is available for data transfer via a serial port. In addition, a scale may be connected to the plethysmometer so that data on animal weights may be collected and passed to the computer along with the paw volume data. The instrument may be configured to prompt for specific measurements in a prescribed sequence; instructions are entered on four function keys.

Tel. (+1) 630-860-9700

Fax (+1) 630-860-9775