

encoded viral antigen by coinoculation with plasmids expressing cytokines. *Immunity* **2**, 129–135 (1995).

18. Fynan, E.F. *et al.* DNA vaccines: Protective immunizations by parenteral, mucosal, and gene-gun inoculations. *Proc. Natl. Acad. Sci. USA* **90**, 11478–11482 (1993).

19. Raz, E. *et al.* Intradermal gene immunization: The possible role of DNA uptake in the induction of cellular immunity to viruses. *Proc. Natl. Acad. Sci. USA* **91**, 9519–9523 (1994).

20. Stevens, T.L. *et al.* Regulation of antibody isotype secretion by subsets of anti-

gen-specific helper T cells. *Nature* **334**, 255–258 (1988).

21. Reitan, S.K. & Hannestad, K. A syngenic idiotype is immunogenic when borne by IgM but tolerogenic when joined to IgG. *Eur. J. Immunol.* **25**, 1601–1608 (1995).

22. Chen, T.T. & Levy, R. Induction of autoantibody responses to GM-CSF by hyperimmunization with an Id-GM-CSF fusion protein. *J. Immunol.* **154**, 3105–3117 (1995).

23. Reff, M.E. *et al.* Depletion of B cells in vivo by a chimeric mouse human monoclonal antibody to CD20. *Blood* **83**, 435–445 (1994).

ERRATA

The seroepidemiology of human herpesvirus 8 (Kaposi's sarcoma-associated herpesvirus): Distribution of infection in KS risk groups and evidence for sexual transmission

DEAN H. KEDES, EVA OPERSKALSKI, MICHAEL BUSCH, ROBERT KOHN, JENNIFER FLOOD & DON GANEM

Nature Medicine **2**, 918–924 (1996)

On page 920 of the August issue, the legend for Figure 2 did not correctly describe the presentation of the figure. The correct legend, accompanying the figure, is displayed to the right.

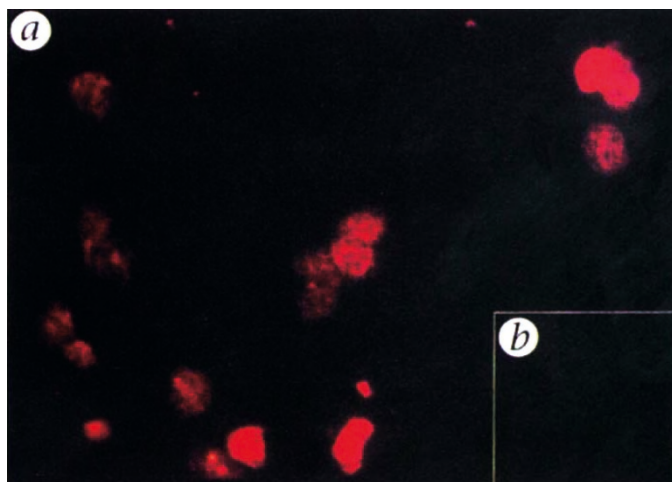


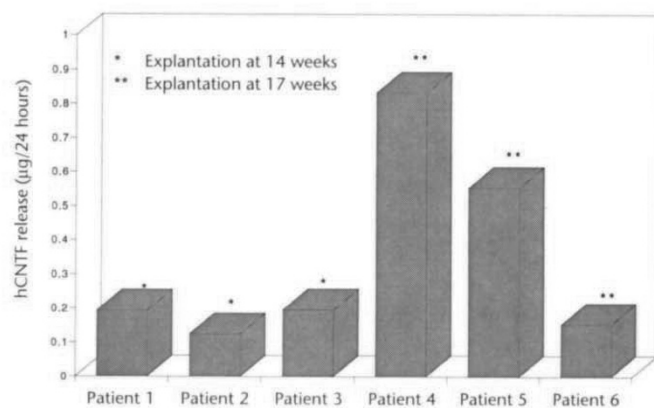
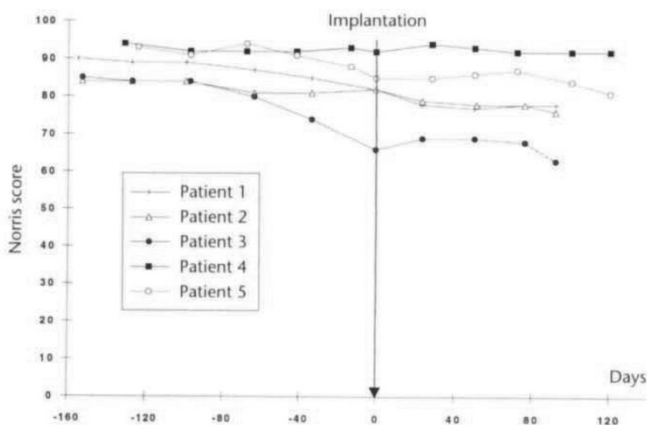
Fig. 2 Absence of cross-reactivity between EBNA and LANA. *a*, Serum from an HIV-, HBV- and HCV-negative blood donor (1:40 dilution) reacted with nuclei from the EBV latently infected B-cell line BL41 (95-8); *b* (inset), the same serum reacted with BCBL-1 nuclei.

Intrathecal delivery of CNTF using encapsulated genetically modified xenogeneic cells in amyotrophic lateral sclerosis patients

PATRICK AEBISCHER, MYRIAM SCHLUEP, NICOLE DÉGLON, JEAN-MARC JOSEPH, LORENZ HIRT, BRUNO HEYD, MOSES GODDARD, JOSEPH P. HAMMANG, ANNE D. ZURN, ANN C. KATO, FRANCO REGLI & E. EDWARD BAETGE

Nature Medicine **2**, 696–699 (1996)

On page 697 of the June issue, legends for Figure 1 and 2 were switched. The correct placement is displayed below.



5. Patient 6 was unavailable for functional evaluation. Each patient was followed for at least 4 months before implantation. Implantation of the CNTF-BHK device occurs as time 0.

Fig. 2 *In vitro* hCNTF output from explanted capsules at 14 (patients 1–3) and 17 (patients 4–6) weeks, respectively.