

ERRATA

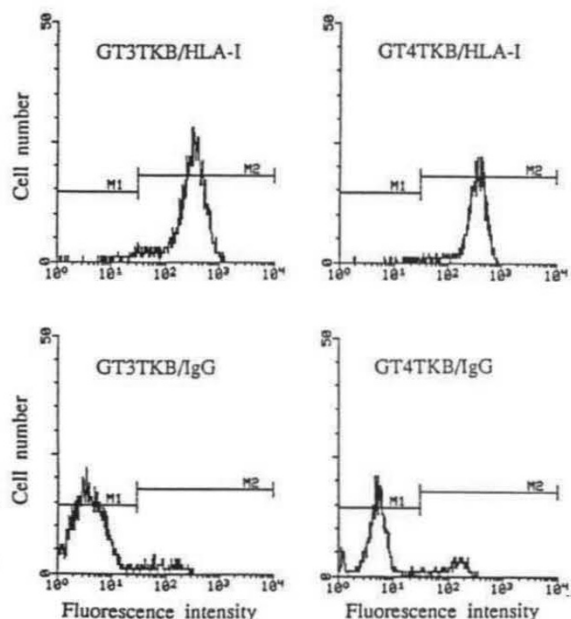
Induction of human autologous cytotoxic T lymphocytes on formalin-fixed and paraffin-embedded tumour sections

SHU QIN LIU, KAORU SAJO, TAKESHI TODOROKI & TADAO OHNO

Nature Medicine 1, March, 267–271, 1995.

Figure 1 *c,d* was inadvertently printed twice and Figure 3 was omitted. The correct Figure 3 appears at left.

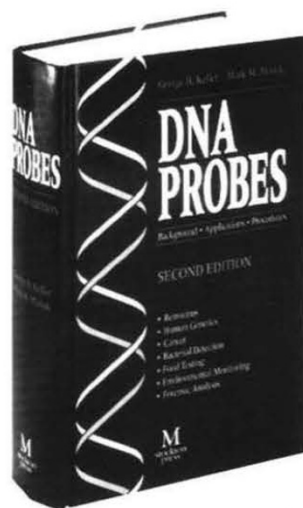
Fig. 3 Expression of MHC-class I molecules on the target GT3TKB and GT4TKB cells were stained with monoclonal antibody against HLA-I and stained with FITC-labelled goat anti-mouse IgG polyclonal antibody for cytofluorometry (upper two figures). Lower two figures, cells stained with control IgG instead of the monoclonal antibody against HLA-I. M1 and M2 indicate negative and positive ranges of fluorescence, respectively.



DNA Probes

SECOND EDITION

Edited by George H. Keller
and Mark M. Manak



November 1993 • \$90
656 pp. • Hardcover
ISBN 1-56159-102-5

The new edition of this popular techniques manual has been updated and expanded to reflect the many advances in the use of this powerful tool over the past few years.

As in the first edition, the emphasis is on the commercial uses of DNA probes, such as diagnostic applications. Each set of techniques includes specific protocols, background material and valuable advice, giving you the full benefit of the thirteen contributors' expertise.

CONTENTS

Preface • Molecular Hybridization Technology • Sample Preparation • Chemical Synthesis of DNA and DNA Analogs • Radioactive Labeling Procedures • Non-Radioactive Labeling Procedures • Hybridization Procedures and Detection Formats • Amplification Systems • *In Situ* Analysis • Molecular Cloning and Screening • Detection of Retroviruses • Diagnosis of Genetic Disorders • Cancer Diagnosis • Bacterial Detection • Microbiological Analysis of Foods • Environmental Monitoring • Forensic Analysis • Appendix • Index

How to Order

Call toll-free 1-800-221-2123, in NY 212-627-5757, fax 212-627-9256
Or write Stockton Press, 49 W. 24th Street, NY, NY 10010