



**Stanford Stem Cell and
Regenerative Medicine Institute /
Stanford Cardiovascular Institute -
Cardiovascular Stem Cell Biologist
with M.D., Ph.D., or M.D./Ph.D.**

**Assistant
Professor/Associate Professor**

The Stanford Stem Cell and Regenerative Medicine Institute and the Stanford Cardiovascular Institute seek to jointly recruit a cardiovascular stem cell biologist or cardiac physiologist with M.D., Ph.D., or M.D./Ph.D. degrees for this tenure-eligible position at an open rank. Applicants should have a strong record of research in molecular and cellular cardiovascular science and expertise or interest in using embryonic stem cells, with adult stem cells, embryonic stem cells, or/and inducible pluripotent stem cells in cardiovascular applications to study questions in cardiovascular biology. Other areas of expertise include electrophysiology, pharmacology, or cellular/molecular cardiology. Successful candidates will be expected to develop an independent research program using stem cells to address basic and translational issues in the cardiovascular domain medicine. This program will be an important collaborative component to the current cardiovascular regenerative medicine program. Candidate will join a dynamic group of scientists using stem cells to study a broad variety of questions and should focus on issues of directed differentiation and cell characterization.

Lab space for this new research program will be provided in the recently completed Lorry I. Lokey Stem Cell Research Building (SIM1). The SIM1 building consists of four floors adding up to a total of 200,000 gsf (130,000 nasf).

Stanford University is an equal opportunity employer and is committed to increasing the diversity of its faculty. It welcomes nominations of and applications from women and members of minority groups, as well as others who would bring additional dimensions to the University's research, teaching, and clinical missions.

Interested applicants should send a cover letter and C.V. and the names of three references to:

Thomas Quertermous, M.D., Chief (Research)
Division of Cardiovascular Medicine
C/O Corrine Sanchez
Department of Cardiothoracic Surgery
CVRB, Falk Bldg., Mail Code 5407
300 Pasteur Drive
Stanford, CA 94305-5407

Send by e-mail to:
corrine.sanchez@stanford.edu

NW213311R



The Center for Regenerative Medicine (CRM) at Massachusetts General Hospital and the Harvard Stem Cell Institute invites applications for a tenure-track Assistant Professor position. Outstanding scientists in the field of vertebrate stem cell or regenerative biology will be considered. Candidates with a research program focused on organogenesis, tissue regeneration or pluripotency, and who have an interest in application to human disease are especially welcome. Successful candidate(s) will be members of the **Harvard Stem Cell Institute** and faculty of **Harvard University**. Candidates must hold a PhD and/or MD and have a history of innovative, interactive research. Women and minority candidates are urged to apply. MGH is an Equal Opportunity/Affirmative Action Employer.

Applicants should send an electronic copy of a 1) letter of interest, 2) research plan, 3) current curriculum vitae and 4) three letters of recommendation to Dr. David Scadden c/o Miklosik.Mona@mgh.harvard.edu, Center for Regenerative Medicine Search Committee, Massachusetts General Hospital, 185 Cambridge St., CPZN 4265, Boston, MA 02114.

NW213210R

Read *Naturejobs* regularly.

For better career prospects.



naturejobs

naturejobs

Scientists stay informed of the latest:

- Hot jobs
- Career news
- Announcements

Sign-up to our FREE jobseeker newsletter:

www.naturejobs.com/newsletter



Graduate & Postdoctoral Training Program in Stem Cell Biology

The Helen L. and Martin S. Kimmel Center for Stem Cell Biology

The new Stem Cell Biology training program in The Sackler Institute of Graduate Biomedical Sciences is designed to promote interdisciplinary studies within the field of stem cell biology for **graduate students** and **postdoctoral fellows**. Focus is placed on four broad research areas:

- (1) programming and reprogramming, lineage restriction and development
- (2) tissue stem cells and disease
- (3) regeneration and homeostasis
- (4) cancer and stem cells

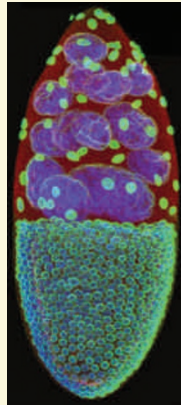
The faculty members of the Kimmel Stem Cell Center are affiliated with 20 different basic and clinical departments within the NYU School of Medicine and work on a variety of model organisms and disease models. The training program provides mentoring, course work, and research opportunities that bridge the gap between basic and clinical studies, facilitating advances in stem cell biology and its medical applications.

If you are interested in becoming a postdoctoral fellow in a Kimmel Stem Cell Center lab, please contact our faculty members directly and visit the Kimmel Center for Stem Cell Biology website: <http://www.med.nyu.edu/kimmelcenter/>

For more information on the pre-doctoral training program and to apply visit: <http://sackler.med.nyu.edu/graduate/training-programs/stem-cell-biology/predoctoral-program>

We acknowledge support from: **Kimmel Center for Stem Cell Biology** • **NYSTEM Skirball Institute of Biomolecular Medicine** • **NYU Cancer Institute**

The NYU School of Medicine was founded in 1841 and is an equal opportunity, affirmative action employer and provides a drug-free and smoke-free workplace.



FACULTY MENTORS:

Ruth Lehmann, PhD (Director)
E. Lynette Wilson, PhD (Co-director)
E. Jane Hubbard, PhD (Graduate Advisor)

Steven Abramson, MD
 Iannis Aifantis, PhD
 Erika Bach, PhD
 Dafna Bar-Sagi, PhD
 Mary Helen Barcellos-Hoff, PhD
 Claudio Basilio, MD
 Steven Burden, PhD
 William Carroll, MD
 Daniel Ceradini, MD
 Pamela Cowin, PhD
 Lisa Dailey, PhD
 Jeremy Dasen, PhD
 Ramanuj Dasgupta, PhD
 Gordon Fishell, PhD
 Glenn Fishman, MD
 Robert Froemke, PhD
 Christoph Hansis, MD, PhD
 Eva Hernando, PhD
 Mayumi Ito, PhD

David Keefe, MD
 Holger Knaut, PhD
 David Levy, PhD
 Dan Littman, MD, PhD
 Susan Logan, PhD
 Jeremy Nance, PhD
 Dimitris Placantonakis, MD, PhD
 Danny Reinberg, PhD
 James Salzer, MD, PhD
 Robert Schneider, PhD
 Markus Schober, PhD
 Jane Skok, PhD
 Susan Smith, PhD
 Tung-Tien Sun, PhD
 Mamta Tahliliani, PhD
 Naoko Tanese, PhD
 Louis Terracio, PhD
 Daniel Turnbull, PhD
 Stephen Warren, MD

NW213420R

Post doctoral Research Associate



Grade 7 £27,428 - £35,788

Available from 1 September 2011, fixed term contract for 1 year, subjected to renewal.

A full-time European Research Council (ERC)-funded post-doctoral position for a young and enthusiastic scientist is available in the Stefano Pluchino laboratory (http://pluchino.brc.cam.ac.uk/labwiki/index.php/Main_Page) at the Cambridge Centre for Brain Repair, to work on a collaboration frame between the University of Cambridge, UK and Peixuan Guo PhD, at the University of Cincinnati, USA aiming at the exploitation of next generation RNA nanotech for the treatment of inflammatory CNS diseases. The major focus will be the development of innovative RNA nanostructures to target neural and non-neural cells in animal models of multiple sclerosis and spinal cord injury.

Candidates with strong background in RNA chemistry, nucleotide chemistry, cell biology. Candidates holding a PhD or equivalent are encouraged to apply.

Prior experience with stem cells and/or neural cells is desirable, though not essential. The successful candidate should be highly motivated, display initiative and independence. They should also have previous publications and good verbal/written English language communication skills.

Applicants should send an email containing a statement of interest, a CV and the names of three referees to either Dr. Stefano Pluchino <spp24@cam.ac.uk>, or Peixuan Guo <guop@purdue.edu>.

Completed applications consisting of a CHRIS/6 (Parts I, 2 & 3) (downloadable from <http://www.admin.cam.ac.uk/offices/hr/forms/chris6/>) a covering letter, and CV, should be sent to Shannon Tinley via email: skt37@cam.ac.uk or sent to Shannon at The Cambridge Centre for Brain Repair, The ED Adrian Building, Forvie Site, Robinson Way, Cambridge, CB2 0PY.

U213454R



STEMCELL Technologies Inc is a privately owned biotechnology company that helps power leading edge life science research around the world. Scientists performing stem cell, immunology, cancer, regenerative medicine and cellular therapy research are among those who rely on our cell culture media, cell separation products and ancillary reagents. We have over 400 science-oriented employees, including 100 PhDs / MScs working in the creation of novel products, providing consistent, unfailing quality in producing these products, and standing with our customers around the globe to provide training, one-on-one assistance and technical support.

Driven by our love of science, and our passion for quality, STEMCELL now delivers over 1500 products to more than 70 countries worldwide. Growing at approximately 20% per year we are currently seeking:

- Stem Cell Scientists
- Field Sales Representatives
- Product Managers

A complete list of career opportunities is available at www.stemcell.com/careers.

THE CELL EXPERTS™ | WWW.STEMCELL.COM
 TOLL-FREE T. 1 800 667 0322 • T. +1 604 877 0713
HUMANRESOURCES@STEMCELL.COM

NW212914R



NESCI is a stem cell collaboration between Durham University, Newcastle University and the NHS Trusts in the North East of England.

Two postdoctoral positions (£27,428 - £30,870 p.a.)

Available for initially 3 years (subject to final confirmation) in the group of Josef Vormoor and Olaf Heidenreich to work on self-renewal mechanisms in acute lymphoblastic leukaemia.

Enquiries: l.k.driscoll@ncl.ac.uk

MRes in Stem Cells and Regenerative Medicine

Includes advanced study of stem cell biology, research skills and a 24-week research project. Teaching and research projects are provided by internationally-recognised researchers from both Newcastle and Durham Universities.

Enquiries: office@nesci.ac.uk



U213455R



MSc in Stem Cells and Regeneration

Online distance learning course offers flexible study options in the highly innovative field of stem cells and regenerative medicine. Taught by internationally recognised research leaders in the field.

For further details & instructions on how to apply, go to www.bris.ac.uk/stemcells-msc or email stemcells-msc@bristol.ac.uk

U213406R

UNIVERSITY OF BIRMINGHAM

Research Fellow

School of Cancer Sciences
College of Medical and Dental Sciences

Post doc positions available with Professor Constanze Bonifer working on molecular haemopoiesis funded by BBSRC and the Kay Kendall Leukaemia Fund

For further details and instructions on how to apply go to www.hr.bham.ac.uk/jobs alternatively information can be obtained from 0121 415 9000.

Valuing excellence; sustaining investment

U213453R



Not paid what you're worth?
Big irritant.

Tactics to improve your salary.

naturejobs

naturejobs



New Naturejobs blog goes live

How can you make more informed career or hiring decisions?

Follow the blog on naturejobs.com to keep up-to-date with the latest scientific employment news from around the world.

What do you think about the news stories affecting scientific careers?

Start sharing your opinions today on the *Naturejobs* blog.

www.naturejobs.com

NEW HANDS-ON TRAINING

iPS + hES Cells

Be among the first to learn from the best in this unique three-day course developed to train academic and industry researchers in:

- Derivation of vector-free human iPS cells
- Culturing iPS and hES cells in a feeder-independent system
- Freezing, thawing and generating embryoid bodies from iPS and hES cells

Receive personalized, state-of-the-art instruction in these challenging and critical techniques from scientists trained in the laboratory of Dr. James Thomson at the Morgridge Institute for Research.

Visit www.wicell.org for details about this course, offered by the Morgridge Institute for Research in partnership with our affiliate, the WiCell Research Institute.™



NW213135R

Photos: Newly derived iPS colony in chemically defined conditions.



Professor of Regenerative Medicine

The Centre for Regenerative Medicine (CRM) at the University of Bath is a unique and highly innovative research centre that brings together 12 research groups spanning: developmental biology, stem cell research and tissue engineering.

We are seeking to appoint an individual with the vision and capability to help us become a premier UK focus for research, training and technology transfer in regenerative medicine.

A strategic appointment: investing in research, inspiring minds, creating knowledge

To find out more about the role and the benefits we offer, please visit our website www.bath.ac.uk/excellence

U213439R

The Cambridge Neural Stem Cell Symposium

5th – 6th September, 2011

Fisher Building, St John's College,
Cambridge, UK

To register, and for more information, visit:
www.neuroscience.cam.ac.uk/events



U213183E

LONDON'S GLOBAL UNIVERSITY



STEM CELL AND REGENERATIVE MEDICINE MSC PROGRAMMES

UCL is a world-leading centre of excellence for stem cell research, where cutting-edge research feeds directly into two innovative taught graduate programmes:

- Cell and Gene Therapy MSc
- Nanotechnology and Regenerative Medicine MSc.

Learn about new translational technologies that are transforming modern medicine from eminent surgeons, leading academics and by participating in active research groups.

Applications for entry in September 2011 should be made by 31 July 2011.

Find out more about UCL's Centre for Stem Cells and Regenerative Medicine research and our MSc degree programmes at: www.ucl.ac.uk/stemcells/students

U213399R

Request for Applications

The NYSCF - Robertson Innovator Awards in Neuroscience

We are accepting proposals for innovative projects exploring fundamental areas of developmental, cellular, cognitive, and behavioral neuroscience.

\$1.5M USD over 5 years

Open to junior faculty across the US, Canada, and UK

Proposal need not be related to stem cells

Application Deadline:
July 8th, 2011

View the full RFA at www.nyscf.org



NW212999A