

## correction

### Functional transplant of megabase human immunoglobulin loci recapitulates human antibody response in mice

Mendez, Michael J. *et al. Nature Genet.* 15, 146–156 (1997).

The following is a correction to authorship:

Michael J. Mendez<sup>2</sup>, Larry L. Green<sup>1</sup>, Jose R.F. Corvalan<sup>1</sup>, Xiao-Chi Jia<sup>1</sup>, Catherine E. Maynard-Currie<sup>1</sup>, Xiao-dong Yang<sup>1</sup>, Michael L. Gallo<sup>1</sup>, Donna M. Louie<sup>1</sup>, Doris V. Lee<sup>1</sup>, Karen L. Erickson<sup>1</sup>, Jac Luna<sup>2</sup>, Catherine M.-N. Roy<sup>1</sup>, Hadi Abderrahim<sup>2</sup>, Ford Kirschenbaum<sup>2</sup>, Masato Noguchi<sup>2</sup>, Douglas H. Smith<sup>2</sup>, Atsushi Fukushima<sup>2</sup>, Joanna F. Hales<sup>1</sup>, Sue Klapholz<sup>2</sup>, Mitchell H. Finer<sup>2</sup>, C. Geoffrey Davis<sup>1</sup>, Krisztina M. Zsebo<sup>2</sup> & Aya Jakobovits<sup>1</sup>

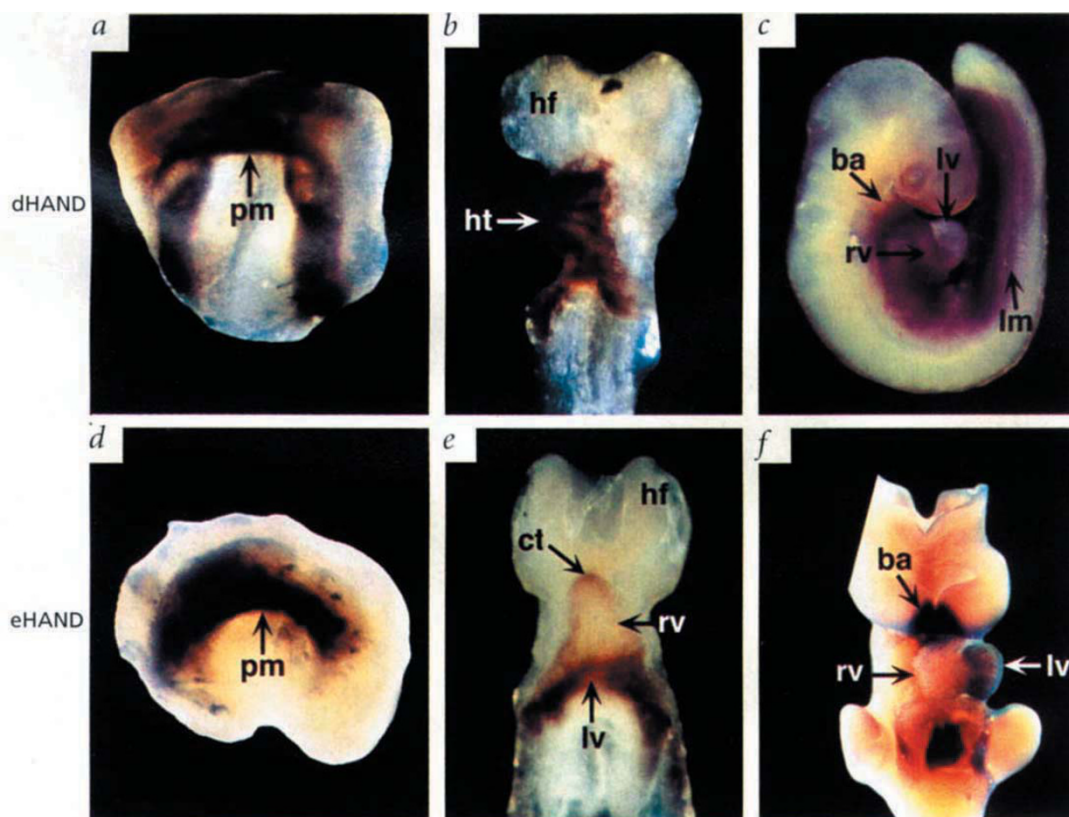
<sup>1</sup>Abgenix, Inc., 7601 Dumbarton Circle, Fremont, California 94555, USA. <sup>2</sup>Cell Genesys, Inc., Foster City, California 94404, USA

## erratum

### Regulation of cardiac mesodermal and neural crest development by the bHLH transcription factor, dHAND

Deepak Srivastava *et al. Nature Genet.* 16, 154–160 (1997).

Due to a printing error, the contrast between colour shades in Fig. 1 was suboptimal, obscuring the difference in ventricular expression of dHAND (Fig. 1c).



**Fig. 1** Expression of *dHAND* and *eHAND* mRNA in staged mouse embryos by whole mount *in situ* hybridization. Panels show embryos at the following stages: **a, d**, E7.75; **b, e**, E8.0; **c**, E9.5; **f**, E10.0. In **e**, note that *eHAND* expression is restricted to the anterior and posterior segments of the heart tube, but is symmetric along the left-right axis of the embryo. Note that *dHAND* expression is restricted to the right and *eHAND* to the left side of the developing heart (**c** and **f**, respectively). pm, precardiogenic mesoderm; lm, lateral mesoderm; ht, heart tube; ct, conotruncus; rv, right ventricle; lv, left ventricle; ba, branchial arch; hf, head fold.