

correction

Functional transplant of megabase human immunoglobulin loci recapitulates human antibody response in mice

Mendez, Michael J. *et al. Nature Genet.* 15, 146–156 (1997).

The following is a correction to authorship:

Michael J. Mendez², Larry L. Green¹, Jose R.F. Corvalan¹, Xiao-Chi Jia¹, Catherine E. Maynard-Currie¹, Xiao-dong Yang¹, Michael L. Gallo¹, Donna M. Louie¹, Doris V. Lee¹, Karen L. Erickson¹, Jac Luna², Catherine M.-N. Roy¹, Hadi Abderrahim², Ford Kirschenbaum², Masato Noguchi², Douglas H. Smith², Atsushi Fukushima², Joanna F. Hales¹, Sue Klapholz², Mitchell H. Finer², C. Geoffrey Davis¹, Krisztina M. Zsebo² & Aya Jakobovits¹

¹Abgenix, Inc., 7601 Dumbarton Circle, Fremont, California 94555, USA. ²Cell Genesys, Inc., Foster City, California 94404, USA

erratum

Regulation of cardiac mesodermal and neural crest development by the bHLH transcription factor, dHAND

Deepak Srivastava *et al. Nature Genet.* 16, 154–160 (1997).

Due to a printing error, the contrast between colour shades in Fig. 1 was suboptimal, obscuring the difference in ventricular expression of dHAND (Fig. 1c).

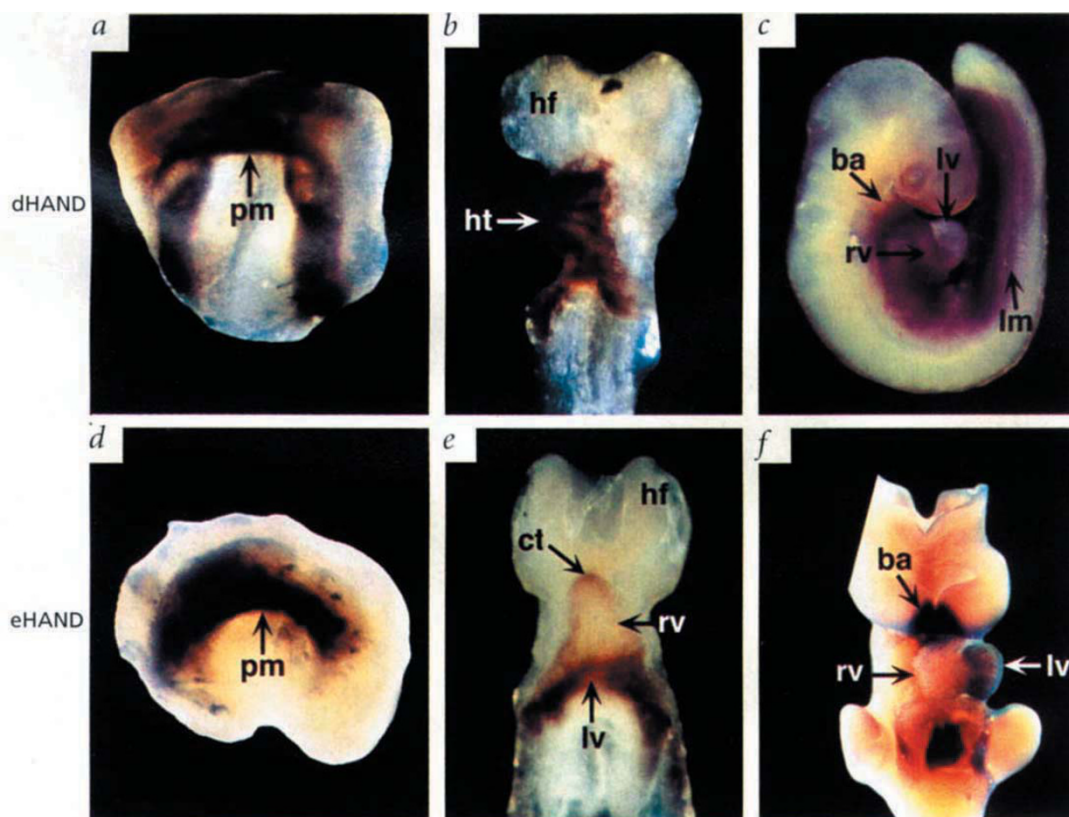


Fig. 1 Expression of *dHAND* and *eHAND* mRNA in staged mouse embryos by whole mount *in situ* hybridization. Panels show embryos at the following stages: **a, d**, E7.75; **b, e**, E8.0; **c, f**, E9.5; **f**, E10.0. In **e**, note that *eHAND* expression is restricted to the anterior and posterior segments of the heart tube, but is symmetric along the left-right axis of the embryo. Note that *dHAND* expression is restricted to the right and *eHAND* to the left side of the developing heart (**c** and **f**, respectively). pm, precardiogenic mesoderm; lm, lateral mesoderm; ht, heart tube; ct, conotruncus; rv, right ventricle; lv, left ventricle; ba, branchial arch; hf, head fold.