

# Erratum: G-CSF supports long-term muscle regeneration in mouse models of muscular dystrophy

Nozomi Hayashiji, Shinsuke Yuasa, Yuko Miyagoe-Suzuki, Mie Hara, Naoki Ito, Hisayuki Hashimoto, Dai Kusumoto, Tomohisa Seki, Shugo Tohyama, Masaki Kodaira, Akira Kunitomi, Shin Kashimura, Makoto Takei, Yuki Saito, Shinichiro Okata, Toru Egashira, Jin Endo, Toshikuni Sasaoka, Shin'ichi Takeda & Keiichi Fukuda

*Nature Communications* 6:6745 doi: 10.1038/ncomms7745 (2015); Published 13 April 2015; Updated 18 Jun 2015.

The immunofluorescence images in Fig. 1b of the PDF version of this Article were inadvertently duplicated from Fig. 1a during the production process. The correct version of Fig. 1 appears below; the HTML version of the paper was correct from the time of publication.

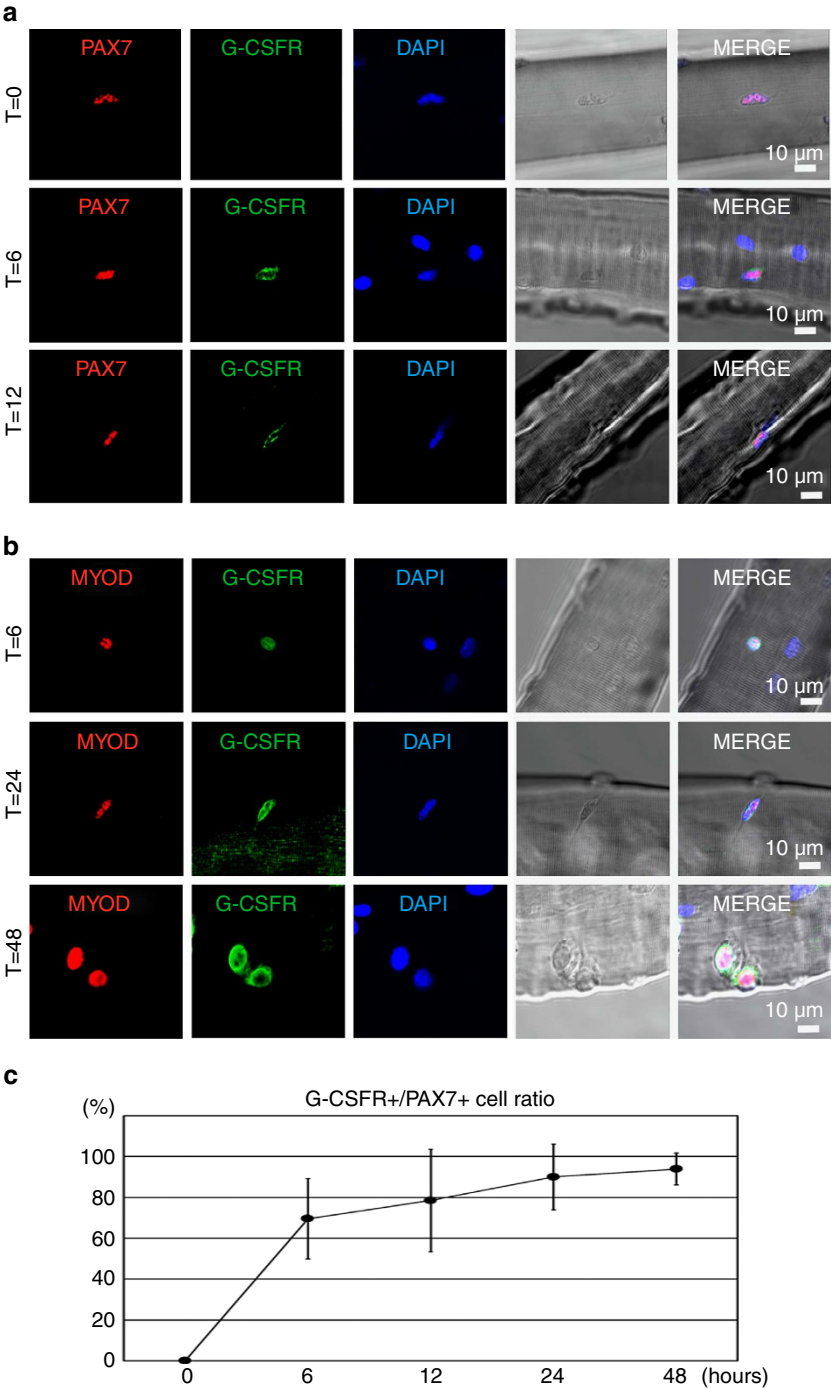


Figure 1