

ARTICLE

Received 3 Feb 2015 | Accepted 20 Apr 2015 | Published 26 May 2015

DOI: 10.1038/ncomms8252

OPEN

Unexpected edge conduction in mercury telluride quantum wells under broken time-reversal symmetry

Eric Yue Ma^{1,2}, M. Reyes Calvo^{1,2}, Jing Wang^{1,3}, Biao Lian^{1,3}, Mathias Mühlbauer^{1,4}, Christoph Brüne⁴, Yong-Tao Cui¹, Keji Lai^{1,2,5}, Worasom Kundhikanjana^{1,2}, Yongliang Yang¹, Matthias Baenninger^{1,3}, Markus König^{1,3}, Christopher Ames⁴, Hartmut Buhmann⁴, Philipp Leubner⁴, Laurens W. Molenkamp⁴, Shou-Cheng Zhang^{1,3}, David Goldhaber-Gordon^{1,3}, Michael A. Kelly¹ & Zhi-Xun Shen^{1,2,3}

The realization of quantum spin Hall effect in HgTe quantum wells is considered a milestone in the discovery of topological insulators. Quantum spin Hall states are predicted to allow current flow at the edges of an insulating bulk, as demonstrated in various experiments. A key prediction yet to be experimentally verified is the breakdown of the edge conduction under broken time-reversal symmetry. Here we first establish a systematic framework for the magnetic field dependence of electrostatically gated quantum spin Hall devices. We then study edge conduction of an inverted quantum well device under broken time-reversal symmetry using microwave impedance microscopy, and compare our findings to a non-inverted device. At zero magnetic field, only the inverted device shows clear edge conduction in its local conductivity profile, consistent with theory. Surprisingly, the edge conduction persists up to 9 T with little change. This indicates physics beyond simple quantum spin Hall model, including material-specific properties and possibly many-body effects.

¹Geballe Laboratory for Advanced Materials, Stanford University, 476 Lomita Mall, Stanford, California 94305, USA. ²Department of Applied Physics, Stanford University, 348 Via Pueblo Mall, Stanford, California 94305, USA. ³Department of Physics, Stanford University, 382 Via Pueblo Mall, Stanford, California 94305, USA. ⁴Physikalisches Institut (EP3), Universität Würzburg, Am Hubland, Würzburg D-97074, Germany. ⁵Department of Physics, University of Texas at Austin, Austin, Texas 78712, USA. Correspondence and requests for materials should be addressed to Z.-X.S. (email: zxshen@stanford.edu).

Quantum spin Hall (QSH) theory predicts that when the thickness of an HgTe quantum well (QW) exceeds a critical value d_C , a band inversion happens and the QW transitions from a trivial insulator to a QSH insulator with gapless edge channels protected by time-reversal symmetry (TRS)^{1,2}. While edge conduction in the presence of TRS has been well established in various transport^{3–7} and microscopy studies^{8,9}, its predicted breakdown under broken TRS remains unverified^{10,11}, except for earlier works showing suppression of conductance by weak field in devices with strong backscattering at zero field³, and a gap opening at the otherwise protected Landau level (LL) crossing near the field-induced topological phase transition^{12,13}. A systematic magnetic-field-dependent study of QSH edge conduction combining microscopy and transport techniques is therefore highly desirable to gain further insight into this key prediction.

In this work, we combine transport and microwave impedance microscopy (MIM), a scanning probe technique that measures local electromagnetic response^{14–16}, to study two HgTe/(Hg_{0.3}Cd_{0.7})Te QW devices, above (7.5 nm) and below (5.5 nm) the theoretical d_C of 6.7 nm. At zero magnetic field, edge conduction is only observed in the 7.5 nm device, consistent with QSH theory. In the case of broken TRS by a magnetic field, we first develop a rigorous treatment for the field dependence of

electrostatically gated HgTe QW devices and show that the widely accepted picture of re-entrant behaviour in Hall conductance³ needs to be revisited. We then discuss our field-dependent MIM and transport data. They agree well with our expectations in general, but with one surprise: the edge conduction in the 7.5 nm device survives up to 9 T with no sign of disappearing, well beyond the expected crossover field of ~ 3.8 T, when the QW should transition into a trivial insulator. The stark contrast suggests the necessity of including more physics to understand QSH in real systems. We discuss the possibility of conduction through trivial edge states enhanced by spin-orbit coupling and effects of electron–electron interactions.

Results

5.5 versus 7.5 nm QW in zero magnetic field. We first establish the influence of the different QW thicknesses in transport measurements. We use a two-step etching process to define mesas with clean physical edges for both devices (Fig. 1a, Supplementary Fig. 1 and Supplementary Note 1). The conductive substrate ($n++$ GaAs) 4 μm below the QW is used as the back gate to tune the QW from p -type through the bulk gap to n -type, as shown in the two-terminal resistance (R_2) taken at 4.5 K and 0 T, of a strip 50- μm long and 1,225- μm wide (Fig. 1c,f). When the Fermi level

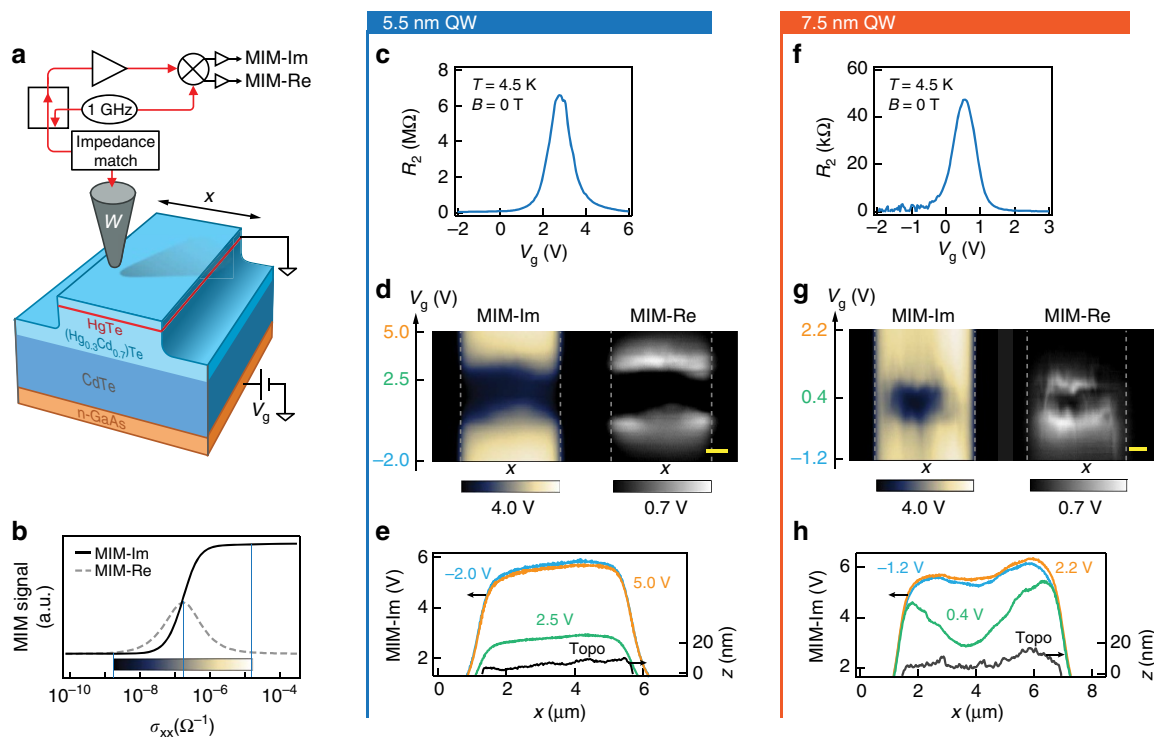


Figure 1 | Microwave impedance microscopy (MIM) set-up and zero field gate dependence of 5.5 and 7.5 nm devices. (a) Schematic of MIM set-up and device structure, showing line scan direction x . (b) MIM response as a function of the sheet conductance of the quantum well, obtained by finite element analysis. The sensitivity window is centred at $2 \times 10^{-7} \Omega^{-1}$ and extends roughly 2 orders of magnitude in both directions, as indicated by the two-tone colour scale. (c) Gate-dependent two-terminal resistance of a 50- μm long stripe on the 5.5 nm device. (d) Typical MIM-Im and MIM-Re single-line scan versus gate voltage (V_g) across a ~ 5 - μm wide mesa at 4.5 K. Physical edges are indicated by grey dashed lines. Two-tone colour scale is used in MIM-Im to reflect the MIM sensitivity window in b, with neutral grey corresponding to the maximum in MIM-Re. The mesa appears homogeneously insulating with no edge conduction in the bulk gapped region. The scale bar is 1 μm , for x direction only. (e) MIM-Im line-cuts when the QW is in p -type (-2.0 V), gap (2.5 V) and n -type (5.0 V). Black solid line is the mesa surface topography detail. MIM stays in constant-height mode with the tip ~ 30 nm above the average mesa surface; when moving into the etched-away region outside the mesa, the tip-sample distance quickly increases to ~ 160 nm and thus the MIM-Im signal decreases significantly. For the same reason the right part of the mesa has a slightly higher MIM-Im signal due to higher topography. This crosstalk only contributes a gate-independent modulation to the MIM signal. (f–h) Same measurements for the 7.5 nm device. Note the lower maximum two-terminal resistance and prominent edge conduction in the gapped region. Crosstalk from topography is again visible as a gate-independent modulation of MIM signal.

(E_F) is gate-tuned to the bulk gap, R_2 reaches 6 M Ω (150 M Ω/\square) for the 5.5 nm QW but only 50 k Ω for the 7.5 nm QW, consistent with contribution from edge conduction.

We then use MIM to confirm the edge conduction in real space. MIM delivers a small excitation ($< \sim 0.1 \mu\text{W}$) at 1 GHz to a metallic tip and measures the reflected signal with a spatial resolution of ~ 150 nm. The two output channels, MIM-Im and MIM-Re, are proportional to the change of the imaginary and real parts of the tip-sample admittance¹⁵. For a buried QW structure, the MIM-Im signal is an intuitive semi-logarithmic representation of QW conductivity with a calibrated two-tone colour scale (Fig. 1b, Supplementary Fig. 2 and Supplementary Note 2). Repeated MIM single-line scans are performed across a $\sim 5\text{-}\mu\text{m}$ wide mesa while tuning the gate voltage, producing Fig. 1d,g (for 5.5 and 7.5 nm QW, respectively). When E_F is in valence or conduction band, both the 5.5 and 7.5 nm device appear homogeneously conductive ($\sigma_{xx} > \sim 2 \times 10^{-6} \Omega^{-1}$); when E_F is tuned towards the bulk gap, the 5.5 nm device becomes homogeneously insulating ($\sigma_{xx} < \sim 2 \times 10^{-8} \Omega^{-1}$) while the 7.5 nm device only becomes insulating in the bulk—the edge remains conductive (Fig. 1d,e,g,h, also Supplementary Fig. 3).

The smooth MIM profile of the edge conduction with a full-width-half-maximum of $\sim 1.5 \mu\text{m}$ (green trace in Fig. 1h) is not limited by the spatial resolution. Instead it reveals that local conductivity gradually decreases by ~ 3 orders of magnitude going from the edge to the centre of the mesa. While the full-width-half-maximum of local conductivity in linear scale ($< \sim 500$ nm) is consistent with previous results⁷, the origin of the small MIM signal extending $\sim 2 \mu\text{m}$ into the bulk requires better understanding¹⁷.

Expected magnetic field dependence for gated HgTe QW devices. We now move on to the magnetic field dependence. Figure 2a,f is the calculated LL fan chart for 5.5 nm and 7.5 nm QWs, respectively. We included an inversion symmetry breaking term to reproduce the observed avoided crossing of the ‘zero modes’ at the crossover field of ~ 3.8 T (Fig. 2f)^{12,13,18}. Previously the LL fan charts were directly compared with gate- and field-dependent transport data to demonstrate a ‘re-entrant quantum Hall effect’ in an inverted device: E_F was thought to stay constant with fixed gate voltage and thus if resides in the gap at zero field will cross $\nu = +(-)1$ LL and back to the gap as the field increases³. This picture needs to be revisited, because in electrostatically gated devices, a constant gate voltage corresponds to a constant carrier density instead of constant E_F ; the excess carriers needed for E_F to cross the lowest LLs when starting from the gap are simply not supplied (Supplementary Note 3).

Figure 2b,g is the calculated bulk density of states (DOS) from Fig. 2a,f with vertical axis converted to carrier density using a disorder-broadened LL DOS (Methods): they can now be directly compared with the gate- and field-dependent transport and MIM scans. Note that Fig. 2b,g is very similar despite drastic differences between Fig. 2a,f, because the DOS of a LL is independent of the LL fan chart and only depends on B (Supplementary Fig. 4). The difference in field dependence between inverted and non-inverted QW devices is therefore much more subtle than previously understood, as demonstrated below.

Magnetic field dependence of 5.5 nm QW. The field dependence of the 5.5 nm device agrees well with expectation (Fig. 2a–e). Gate- and field-dependent two-terminal resistance (Fig. 2d) shows a simple metal–insulator transition at low densities, with the insulating region expanding linearly with field. MIM scans of a 7.2- μm long section of the mesa confirm that the mesa stays

mostly homogeneously conductive or insulating with smooth transitions (Fig. 2e). The observed behaviour can be well understood by assuming that the mobility edge is at a fixed LL filling factor ν ($\sim +0.15/-0.2$ in this particular device, orange and blue lines in Fig. 2c–e).

Magnetic field dependence of 7.5 nm QW. The field dependence of the 7.5 nm device can be best illustrated through comparison with the 5.5 nm device. We start with expectations from a simple QSH model. Comparing Fig. 2g,b, we know the bulk should behave similarly in both devices, insulating between the two mobility edges ($|\nu| < \sim 0.2$) and conductive outside this range. The major predicted difference lies in the regime with insulating bulk (Fig. 2h): edge states are expected to exist between 0 and 3.8 T (Region I) due to the anomalous bending of the ‘zero modes’ near physical edges (Fig. 2f inset), but become progressively weaker due to disorder scattering and evolution of the ‘zero modes’, until completely disappearing into the bulk at 3.8 T, at which point the QW becomes a ‘trivial insulator’ (Region II)¹⁹. We stress here that the LL filling factor in region I and II is low enough ($|\nu| < \sim 0.2$) that no integer quantum Hall effect should be present, as opposed to previous expectations³ (Supplementary Fig. 5). The gradual disappearance of the edge conduction from region I to II should be directly observable in real-space images; a reduced resistance should also be measured in region I due to the edge conduction, contrasting with a fully insulating behaviour in region II.

In the measured two-terminal resistance data on the 7.5 nm device, however, the expected fully insulating region II breaks into two sub-regions II and II* (Fig. 2i), where II* is not insulating. The nature of this discrepancy is readily revealed in the MIM images (Fig. 2j): whereas the bulk has already become insulating in II*, edge conduction, which is predicted to disappear beyond the crossover field (3.5 ± 0.5 T as determined experimentally), persists up to 9 T with no sign of disappearing, therefore making the QW continue to appear conductive in transport. The edge conduction gradually disappears towards the p -type side; the QW thus becomes homogeneously insulating and the resistance goes up by 2 orders of magnitude in region II of Fig. 2i. The boundary between II and II* (green dashed line in Fig. 2i) has a similar slope as the bulk mobility edge ($\nu \sim +0.2$, orange dashed line) but with an offset in density, and therefore extrapolates to a different ‘charge-neutral point’ at 0 T (green dotted line). The regions where edge conduction is present (Region I and II*), although artificially divided, show virtually no discontinuity. In fact, the edge conduction appears even clearer at finite field (compare 0 T/1.0 V and 5 T/1.0 V in Fig. 2j), as the bulk becomes more homogeneously insulating, likely due to the localization caused by the magnetic field.

A careful analysis of the MIM line profile further demonstrates that the local edge conductivity dominates electronic transport in both low- and high-field regimes. Figure 3a,c shows the averaged line-cuts of the MIM images in the two columns corresponding to the 3 and 7 T case in Fig. 2j. The extracted edge and bulk MIM signal is plotted against V_g in Fig. 3b,d, together with the corresponding R_2 data. It is immediately obvious that both the peak position and magnitude of R_2 have a strong correlation with the edge signal, but not the bulk signal. This excellent agreement between local signal and transport confirms that the unexpected edge conductivity is due to edge states that can conduct DC current across mesoscopic distances, instead of localized states at the edges.

Discussion

These results in HgTe QWs represent an opportunity to learn physics beyond the simple textbook QSH theory—a rare

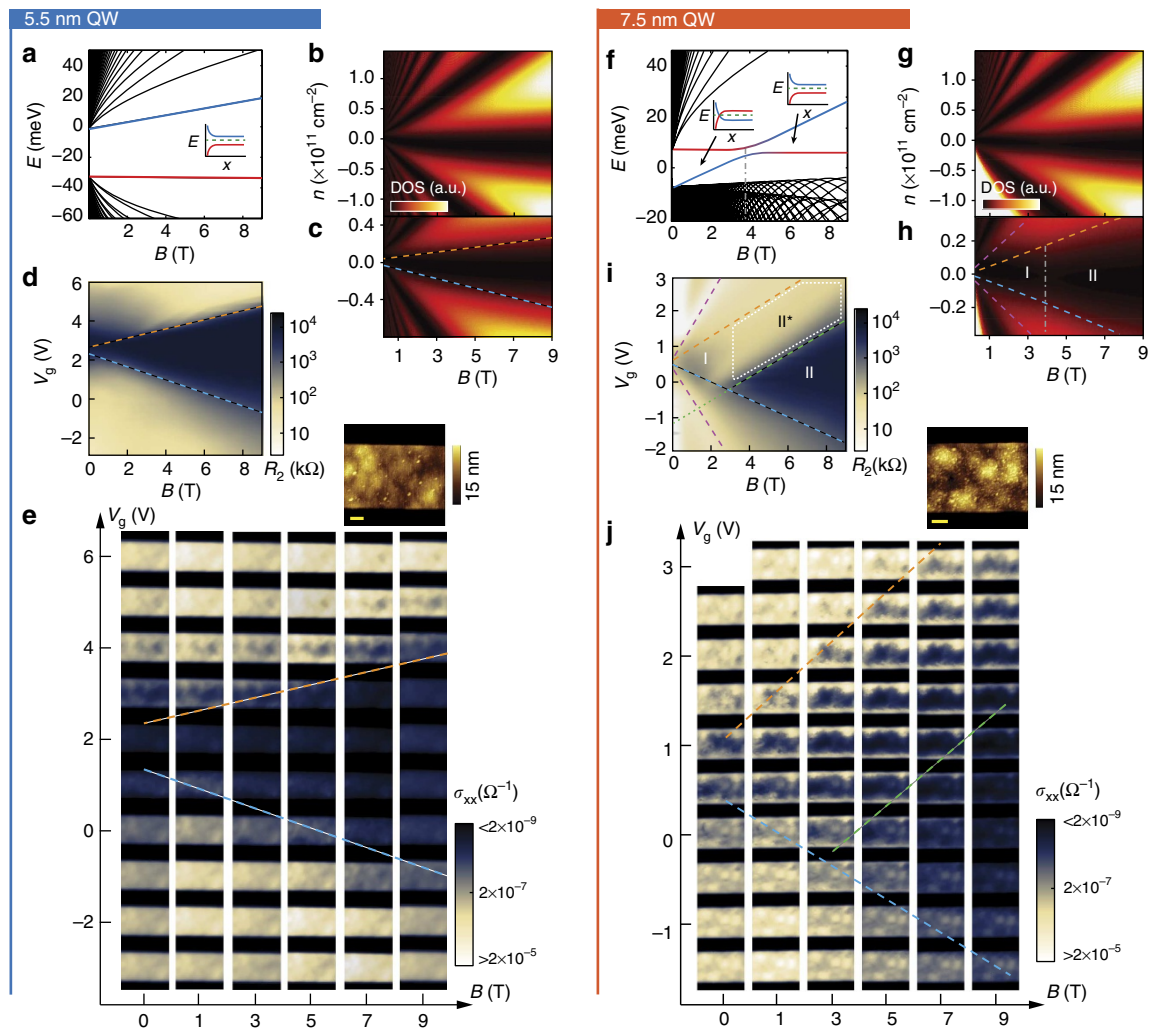


Figure 2 | Magnetic field dependence of the 5.5 and 7.5 nm devices. (a) Calculated LL fan charts of the 5.5 nm device. Inset shows the bending of the electron-like (blue) and hole-like (red) lowest LLs near a physical edge. Green dashed line is the Fermi level. (b) Bulk DOS versus carrier density and magnetic field, converted from a. The conversion is necessary because the back gate linearly tunes the carrier density in the QW rather than the relative position between E_F and the LLs. (c) Magnified image of b corresponding to the density range achievable with our back gate. Electron and hole side mobility edges are indicated. (d) two-terminal resistance versus back gate voltage and magnetic field at 4.5 K. For ease of comparison, the colour scale is chosen such that the corresponding sheet resistance range corresponds to the MIM sensitivity window in zero field limit ($\sigma_{xy} = 0$). (e) Corresponding real-space MIM-Im images. The scale bar is $1 \mu\text{m}$. The linearly broadened insulating regime in d,e corresponds to mobility edges at fixed filling factors (orange and blue dashed lines, as also marked in c). (f–j) Same calculations and experimental results for the 7.5 nm device. Note the anomalous bending of the ‘zero modes’ in f inset. Because the estimated disorder broadening (~ 0.5 meV) and thermal broadening (~ 0.35 meV) are much smaller than the anti-crossing gap (~ 4 meV), the bulk is expected to remain insulating at the crossover field of 3.8 T as shown in h (Supplementary Fig. 4). Note the smaller tuning range in the 7.5 nm device. The major unexpected feature is the absence of insulating behaviour in region II* in i, which corresponds to edge conduction that survives up to 9 T as seen in j. The ‘trivial insulator’ phase only appears near the p -type side. Purple dashed lines in i correspond to $\nu \sim \pm 0.5$ (also marked in h), visible in the 7.5 nm device due to higher mobility.

occurrence in the field of topological insulators where so far theoretical predictions are routinely confirmed. One might naively attribute the observed edge conduction in moderate to high fields to trivial edge states, for example due to a unidirectional band bending (Fermi level pinning) or fringing field effect from gating²⁰. Such trivial edge states, if exist, are often assumed to be localized and not contributing to transport^{21–23}. But in this particular material, strong spin-orbit coupling may suppress direct backscattering²⁴ and thus ‘protect’ the conduction via trivial edge states, possibly to mesoscopic lengths. In fact, both scenarios can account for what we see going from the bulk gap to the n -type side: edge conduction turning on before bulk conduction. However neither scenario can account for our

observations near the p -type side: Fermi level pinning would predict that the edge remains insulating when the bulk becomes conductive; fringing field effect would predict edge conduction turned on before the bulk becomes conductive; whereas experimentally the conductivity of edge and bulk evolve similarly upon entering the p -type side (for example, $V_g = 0$ to -1.5 V in Fig. 3d).

Moreover, the edge conduction, expected and unexpected, only appears in the 7.5 nm device—suggesting that it cannot be completely ‘trivial’, but is related to the thickness-induced band inversion. Additional crucial ingredients may include many-body effects^{25–28} and material specifics of HgTe QW, including its strong spin-orbit coupling, n - p asymmetry, mercury

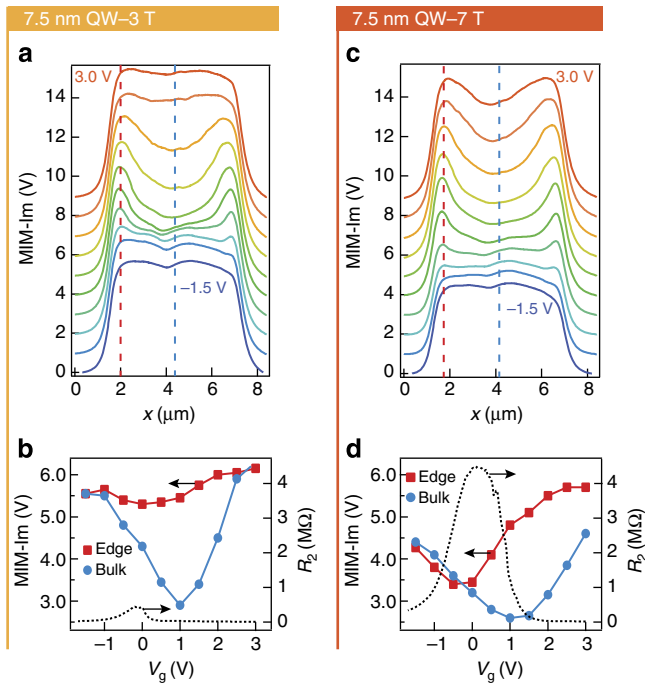


Figure 3 | Transport and MIM line-cut analysis for the 7.5 nm device at 3 and 7 T. (a) Averaged line-cuts of the centre $\frac{1}{3}$ section of the real-space MIM-Im images in the 3 T column of Fig. 2j, with a 1.0 V offset in MIM signal between each gate voltage. Gate voltage is from -1.5 to 3.0 V in 0.5 -V steps. (b) Edge and bulk MIM-Im signal (at the red and blue dashed lines in a) and two-terminal resistance plotted against gate voltage. (c,d) Same plots for the 7 T column. Transport is clearly dominated by edge conduction in the bulk gapped regime in both fields, confirming the extended nature of the edge conduction observed by MIM.

vacancies^{21,29,30} and intrinsic surface effect^{22,23}. As it stands now, our discovery could herald broadly relevant physics or simply reflect specifics of this material. In either case, with HgTe QWs being the standard model system for QSH, our results should shed light on extending existing theory to treat other potential contributions and understanding QSH in real systems.

Methods

QW growth and device fabrication. Each of the two fully strained HgTe/(Hg_{0.3}Cd_{0.7})Te QWs was grown by molecular beam epitaxy on a $4 \mu\text{m}$ fully relaxed CdTe buffer atop an $n++$ GaAs substrate. The mobility exceeds $200,000 \text{ cm}^2 \text{ V}^{-1} \text{ s}^{-1}$ in the n -type regime of the 7.5 nm device. QW thickness was determined by X-ray reflectometry and magnetotransport measurements. The QW is buried 50 (26) nm under the top surface in the 7.5 (5.5) nm device. The long-range surface topographic features mostly come from the relaxation of the CdTe layer instead of the QW or the capping layer. Gate-QW capacitance was extracted from Hall measurement and was used to convert gate voltage to carrier density and LL filling factor. A two-step etching process was used to create mesas ~ 130 -nm deep with clean physical edges for transport and MIM scans (Supplementary Fig. 1 and Supplementary Note 1).

MIM measurement and response curve calculation. MIM measurements were implemented using an Attocube-based scanner stack in a Janis He4 cryostat with 9 T superconducting magnet¹⁵. Topography was taken with a quartz tuning fork sensor to which the MIM probe is attached; MIM images were taken separately with the tip ~ 30 nm above mesa surface in constant-height mode. The efficient capacitive coupling at microwave frequency enables sub-surface sensing without inducing interband transitions. The tip-sample interaction is in the near-field limit, so the spatial resolution is determined by the tip diameter (~ 150 nm) rather than the microwave wavelength. Imaginary and real parts of the complex tip-sample admittance were recorded during scanning to produce the MIM-Im and -Re channel images. Only σ_{xx} contributes to the screening of the microwave electric field; σ_{xy} is not probed here. A small bias is applied to the tip to compensate the work function difference. The relationship between QW conductivity and

tip-sample admittance was obtained using COMSOL Multiphysics 4.4 (details see Supplementary Note 2).

Band structure and LL fan chart calculation. The critical thickness of 6.7 nm was determined by an 8-bulk-band model for a fully strained HgTe/(Hg_{0.3}Cd_{0.7})Te QW. We employ a 4-2D-band effective $k \cdot p$ Hamiltonian for HgTe QW to calculate the LL fan chart:

$$H = \begin{pmatrix} h(\mathbf{k}) & 0 \\ 0 & h^*(-\mathbf{k}) \end{pmatrix} + H_{\text{BIA}} + H_Z \quad (1)$$

The kinetic term is a 2×2 matrix

$$h(\mathbf{k}) = \epsilon(\mathbf{k})I + \begin{pmatrix} m(\mathbf{k}) & A(k_x + ik_y) \\ A(k_x - ik_y) & -m(\mathbf{k}) \end{pmatrix} \quad (2)$$

where an expansion up to k^4 is used:

$$\epsilon(\mathbf{k}) = C + Dk^2 + \frac{F_4 k^4}{1 + F_6 k^6}, m(\mathbf{k}) = M + Bk^2 + \frac{G_4 k^4}{1 + G_6 k^6} \quad (3)$$

with the coefficients determined from first principle calculations. The inversion symmetry breaking BIA term and Zeeman term are:

$$H_{\text{BIA}} = \begin{pmatrix} 0 & 0 & 0 & -\Delta \\ 0 & 0 & \Delta & 0 \\ 0 & \Delta & 0 & 0 \\ -\Delta & 0 & 0 & 0 \end{pmatrix}, H_Z = \mu_B B \begin{pmatrix} g_E & 0 & 0 & 0 \\ 0 & g_H & 0 & 0 \\ 0 & 0 & -g_E & 0 \\ 0 & 0 & 0 & -g_H \end{pmatrix} \quad (4)$$

where $\Delta = 1.5 \sim 2$ meV depending on the QW thickness. In a magnetic field B , we calculate the LL fan chart by substituting $\mathbf{k} \rightarrow \mathbf{k} - e\mathbf{A}$. In the presence of the BIA term, there is an anti-crossing of LLs with a gap 2Δ in an inverted sample. Calculated LL fan charts are converted to DOS intensity plots using the disorder-broadened LL DOS of

$$\text{DOS}(E, E_{\text{LL}}) = \frac{eB}{h\pi} \frac{\Gamma/2}{(E - E_{\text{LL}})^2 + (\Gamma/2)^2} \quad (5)$$

with $\Gamma = 0.5$ meV.

References

- Kane, C. L. & Mele, E. J. Z_2 topological order and the quantum spin hall effect. *Phys. Rev. Lett.* **95**, 146802 (2005).
- Bernevig, B. A., Hughes, T. L. & Zhang, S.-C. Quantum spin Hall effect and topological phase transition in HgTe quantum wells. *Science* **314**, 1757–1761 (2006).
- König, M. *et al.* Quantum spin Hall insulator state in HgTe quantum wells. *Science* **318**, 766–770 (2007).
- Roth, A. *et al.* Nonlocal transport in the quantum spin Hall state. *Science* **325**, 294–297 (2009).
- Brüne, C. *et al.* Evidence for the ballistic intrinsic spin Hall effect in HgTe nanostructures. *Nat. Phys.* **6**, 448–454 (2010).
- Brüne, C. *et al.* Spin polarization of the quantum spin Hall edge states. *Nat. Phys.* **8**, 486–491 (2012).
- Hart, S. *et al.* Induced superconductivity in the quantum spin Hall edge. *Nat. Phys.* **10**, 638–643 (2014).
- Nowack, K. C. *et al.* Imaging currents in HgTe quantum wells in the quantum spin Hall regime. *Nat. Mater.* **12**, 787–791 (2013).
- König, M. *et al.* Spatially resolved study of backscattering in the quantum spin Hall state. *Phys. Rev. X* **3**, 021003 (2013).
- Hasan, M. Z. & Kane, C. L. Colloquium: topological insulators. *Rev. Mod. Phys.* **82**, 3045–3067 (2010).
- Qi, X. L. & Zhang, S. C. Topological insulators and superconductors. *Rev. Mod. Phys.* **83**, 1057–1110 (2011).
- Orlita, M. *et al.* Fine structure of zero-mode Landau levels in HgTe/Hg_xCd_{1-x}Te quantum wells. *Phys. Rev. B* **83**, 115307 (2011).
- Zholudev, M. *et al.* Magneto spectroscopy of two-dimensional HgTe-based topological insulators around the critical thickness. *Phys. Rev. B* **86**, 205420 (2012).
- Lai, K. *et al.* Mesoscopic percolating resistance network in a strained manganite thin film. *Science* **329**, 190–193 (2010).
- Kundhikanjana, W., Lai, K., Kelly, M. A. & Shen, Z.-X. Cryogenic microwave imaging of metal-insulator transition in doped silicon. *Rev. Sci. Instrum.* **82**, 033705 (2011).
- Lai, K. *et al.* Imaging of Coulomb-driven quantum Hall edge states. *Phys. Rev. Lett.* **107**, 176809 (2011).
- Zhou, B., Lu, H. Z., Chu, R. L., Shen, S. Q. & Niu, Q. Finite size effects on helical edge states in a quantum spin-Hall system. *Phys. Rev. Lett.* **101**, 246807 (2008).
- König, M. *et al.* The quantum spin Hall effect: theory and experiment. *J. Phys. Soc. Jpn* **77**, 031007 (2008).

19. Scharf, B., Matos-abiague, A. & Fabian, J. Magnetic properties of HgTe quantum wells. *Phys. Rev. B* **86**, 075418 (2012).
20. Vera-Marun, I. J. *et al.* Quantum Hall transport as a probe of capacitance profile at graphene edges. *Appl. Phys. Lett.* **102**, 013106 (2013).
21. Spicer, W. E. *et al.* Band gap variation and lattice, surface, and interface ‘instabilities’ in $\text{Hg}_{1-x}\text{Cd}_x\text{Te}$ and related compounds. *J. Vac. Sci. Technol. A* **1**, 1735 (1983).
22. Bryant, G. W. Surface-enhanced alloy effects on $\text{Hg}_{1-x}\text{Cd}_x\text{Te}$ (100) surface states and the site-dependent coherent-potential approximation. *Phys. Rev. Lett.* **55**, 1786–1789 (1985).
23. Schick, J. T., Bose, S. M. & Chen, A. B. Electronic structures of HgTe and CdTe surfaces and HgTe/CdTe interfaces. *Phys. Rev. B* **40**, 7825–7830 (1989).
24. Pascual, J. *et al.* Role of Spin in Quasiparticle Interference. *Phys. Rev. Lett.* **93**, 196802 (2004).
25. Maciejko, J. *et al.* Kondo effect in the helical edge liquid of the quantum spin Hall state. *Phys. Rev. Lett.* **102**, 256803 (2009).
26. Lee, D.-H. Effects of interaction on quantum spin Hall insulators. *Phys. Rev. Lett.* **107**, 166806 (2011).
27. Pikulin, D. I. & Hyart, T. Interplay of exciton condensation and the quantum spin Hall effect in InAs/GaSb bilayers. *Phys. Rev. Lett.* **112**, 176403 (2014).
28. Du, L., Knez, I., Sullivan, G. & Du, R.-R. Robust Helical Edge Transport in Gated InAs/GaSb Bilayers. *Phys. Rev. Lett.* **114**, 096802 (2015).
29. Swarts, C. A., Daw, M. S. & McGill, T. C. Bulk vacancies in $\text{Cd}_x\text{Hg}_{1-x}\text{Te}$. *J. Vac. Sci. Technol.* **21**, 198 (1982).
30. Bryant, G. W. Effects of cation vacancies and diffusion on the surface states of $\text{Hg}_{1-x}\text{Cd}_x\text{Te}$. *Phys. Rev. B* **36**, 6465–6471 (1987).

Acknowledgements

We thank Chao-Xing Liu for helpful discussions and A. Budewitz for help in transport characterizations. This work was supported by Defense Advanced Research Projects Agency Microsystems Technology Office, MesoDynamic Architecture Program (MESO) through contract number N66001-11-1-4105. The work at Stanford was also supported by Center for Probing the Nanoscale, an NSF NSEC under grant PHY-0830228 to Z.-X.S. and D.G.-G. to partially support Y.Y., NSF grant DMR1305731 to partially support W.K. and Y.-T.C., the Gordon and Betty Moore Foundation through Grant GBMF3133 and Foundation’s EPiQS Initiative through Grant GBMF4546 to Z.-X.S. to partially support

Y.Y. and Y.-T.C., the European Union under the project FP7-PEOPLE-2010-274769 to M.R.C. and the Department of Energy, Office of Basic Energy Sciences, Division of Materials Sciences and Engineering, under contract DE-AC02-76SF00515 to S.-C.Z. to support J.W. for theoretical calculations and to D.G.-G. for device fabrication and characterization. The work in Würzburg was also supported by the German Research Foundation (DFG grant HA5893/4-1 within SPP 1666 and the Leibniz Program), the EU ERC-AG program (Project 3-TOP) and the Elitenetzwerk Bayern program ‘Topologische Isolatoren’.

Author contributions

E.Y.M. did MIM and transport measurements. M.R.C. and M.M. developed the fabrication process and fabricated the devices. C.A., P.L. and M.R.C. characterized the material. C.A. and P.L. grew the QW wafers. J.W. and B.L. did the theoretical calculations. M.B. fabricated devices used for preliminary measurements. Data analysis, interpretation and manuscript preparation were done by all authors.

Additional information

Supplementary Information accompanies this paper at <http://www.nature.com/naturecommunications>

Competing financial interests: M.A.K. and Z.X.S. are co-founders of PrimeNano Inc. which licensed the sMIM technology from Stanford for commercial instrument.

Reprints and permission information is available online at <http://npg.nature.com/reprintsandpermissions/>

How to cite this article: Ma, E. Y. *et al.* Unexpected edge conduction in mercury telluride quantum wells under broken time-reversal symmetry. *Nat. Commun.* 6:7252 doi: 10.1038/ncomms8252 (2015).



This work is licensed under a Creative Commons Attribution 4.0 International License. The images or other third party material in this article are included in the article’s Creative Commons license, unless indicated otherwise in the credit line; if the material is not included under the Creative Commons license, users will need to obtain permission from the license holder to reproduce the material. To view a copy of this license, visit <http://creativecommons.org/licenses/by/4.0/>