

Erratum: TREX exposes the RNA-binding domain of Nxf1 to enable mRNA export

Nicolas Viphakone, Guillaume M. Hautbergue, Matthew Walsh, Chung-Te Chang, Arthur Holland, Eric G. Folco, Robin Reed & Stuart A. Wilson

Nature Communications 3:1006 doi: 10.1038/ncomms2005 (2012); Published 14 Aug 2012; Updated 17 Oct 2013

This Article contains errors in Figs 6 and 7 that were introduced during the production process. In Fig. 6a, the lane labels on the upper right blot are not aligned correctly with the corresponding lanes. In Fig. 7c, the word tubulin was inadvertently added to the label of a blot probed with α -Aly antibody that should have been labelled 'WB: α -Aly'. The correct versions of the figures follow.

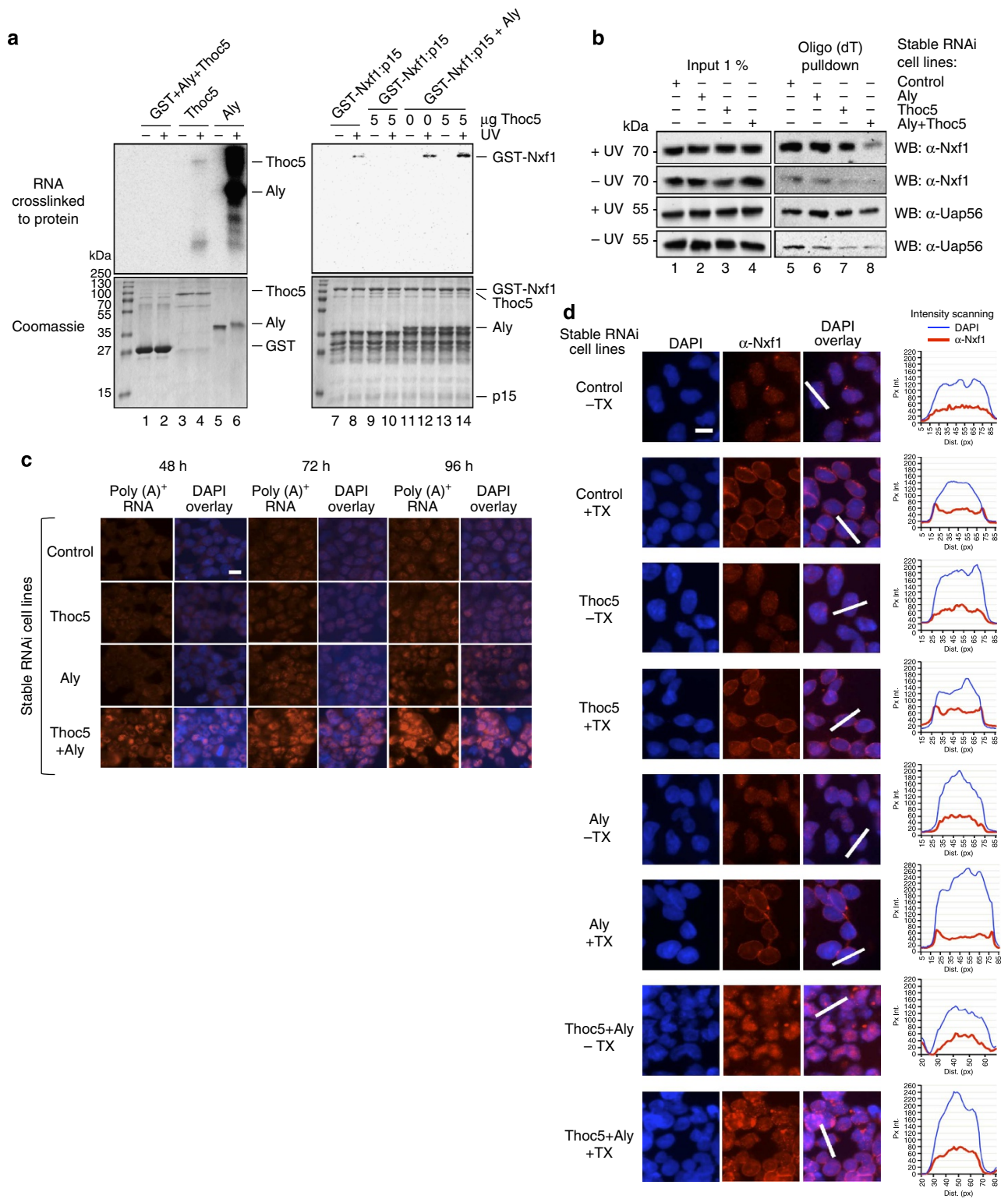


Figure 6

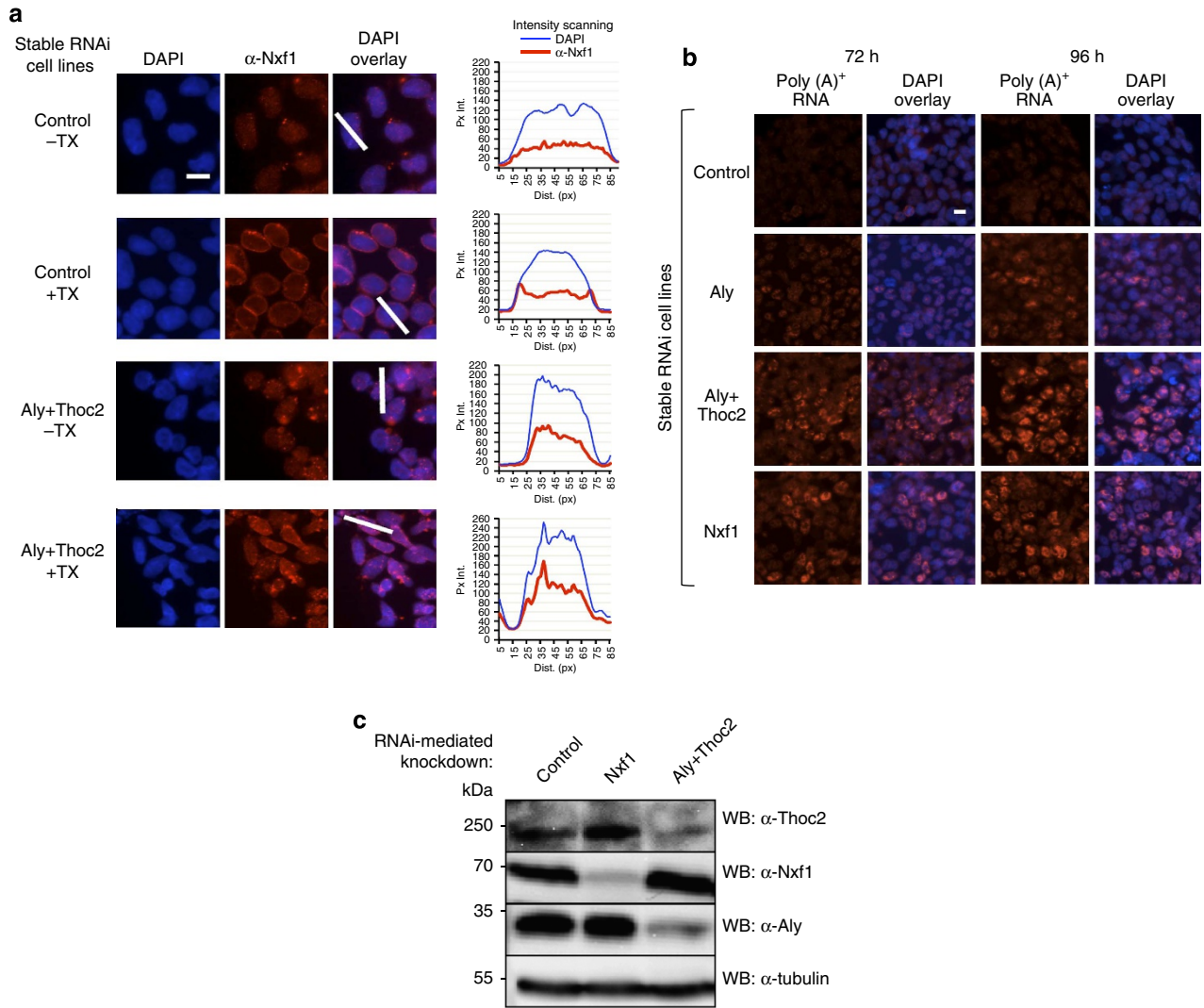


Figure 7