

ARTICLE

Received 14 Aug 2012 | Accepted 15 Nov 2012 | Published 18 Dec 2012

DOI: 10.1038/ncomms2295

OPEN

# Rapamycin reverses impaired social interaction in mouse models of tuberous sclerosis complex

Atsushi Sato<sup>1,2,3</sup>, Shinya Kasai<sup>1</sup>, Toshiyuki Kobayashi<sup>4</sup>, Yukio Takamatsu<sup>1</sup>, Okio Hino<sup>4</sup>, Kazutaka Ikeda<sup>1</sup> & Masashi Mizuguchi<sup>3</sup>

Impairment of reciprocal social interaction is a core symptom of autism spectrum disorder. Genetic disorders frequently accompany autism spectrum disorder, such as tuberous sclerosis complex caused by haploinsufficiency of the *TSC1* and *TSC2* genes. Accumulating evidence implicates a relationship between autism spectrum disorder and signal transduction that involves tuberous sclerosis complex 1, tuberous sclerosis complex 2 and mammalian target of rapamycin. Here we show behavioural abnormalities relevant to autism spectrum disorder and their recovery by the mammalian target of rapamycin inhibitor rapamycin in mouse models of tuberous sclerosis complex. In *Tsc2*<sup>+/-</sup> mice, we find enhanced transcription of multiple genes involved in mammalian target of rapamycin signalling, which is dependent on activated mammalian target of rapamycin signalling with a minimal influence of Akt. The findings indicate a crucial role of mammalian target of rapamycin signalling in deficient social behaviour in mouse models of tuberous sclerosis complex, supporting the notion that mammalian target of rapamycin inhibitors may be useful for the pharmacological treatment of autism spectrum disorder associated with tuberous sclerosis complex and other conditions that result from dysregulated mammalian target of rapamycin signalling.

<sup>1</sup>Addictive Substance Project, Tokyo Metropolitan Institute of Medical Science, Tokyo 156 8506, Japan. <sup>2</sup>Department of Pediatrics, Graduate School of Medicine, The University of Tokyo, Tokyo 113 8655, Japan. <sup>3</sup>Department of Developmental Medical Sciences, Graduate School of Medicine, The University of Tokyo, Tokyo 113 0033, Japan. <sup>4</sup>Department of Molecular Pathogenesis, Graduate School of Medicine, Juntendo University, Tokyo 113 8421, Japan. Correspondence and requests for materials should be addressed to K.I. (email: ikeda-kz@igakuken.or.jp).

Autism spectrum disorder (ASD) affects >1% of the general population<sup>1</sup>. It consists of impaired social interaction, impaired communication and repetitive and restricted behaviours and interests<sup>2</sup>, among which impaired social interaction is most essential<sup>3,4</sup>. The significance of genetic factors in the aetiology of ASD is emphasized by the high heritability of ASD in monozygotic twins<sup>5</sup> and single-gene defects and copy number variations in individuals with ASD<sup>6–8</sup>. However, advances in ASD genetics have not yet provided effective therapies against the social impairment associated with ASD. The pharmacological treatment of ASD is largely limited to the symptomatic level, targeting irritability, aggression and agitation<sup>9</sup>.

Tuberous sclerosis complex (TSC) is an autosomal dominant disorder caused by mutations in either the *TSC1* or *TSC2* gene<sup>10,11</sup>. The neurological phenotype of TSC is divided into pathological and functional aberration. Pathological abnormalities include astrocytomas and cortical tubers, a malformative lesion occurring in almost all individuals with TSC. The functional abnormalities are diverse (for example, epilepsy syndromes, such as infantile spasms and intellectual disability)<sup>12</sup>. At the molecular level, the protein products of *TSC1*, hamartin and *TSC2*, tuberin, form a heterodimer that inhibits Ras homologue enriched in the brain (Rheb)<sup>13</sup>, a small G protein that activates mammalian target of rapamycin (mTOR) complex 1 (mTORC1). Heterozygous defects in either *TSC* gene cause excessive mTOR activation, which in turn provokes abnormal acceleration of important cellular events, such as cell growth and proliferation<sup>13,14</sup>.

TSC is notable for its high association with ASD. Approximately half of the patients with TSC meet the criteria for ASD<sup>15–18</sup>, and 1–4% of ASD cases are attributable to TSC<sup>6,8</sup>. TSC is thus one of the most frequent causes of syndromic ASD<sup>6,8</sup>. The close relationship between TSC and ASD has been explained on the basis of the direct consequence of deficient hamartin and tuberin, resulting in uninhibited mTOR signalling in the brain<sup>19,20</sup>. This hypothesis is supported by the following epidemiological observations. The sex ratio of individuals with TSC-related ASD is equal, in contrast to the skewed male susceptibility to ASD in general<sup>16,17</sup>. ASD occurs in 20% of TSC patients with normal intelligence, far more frequent than in the general population<sup>17</sup>. However, epidemiological links between ASD and cortical tubers or epilepsy have been controversial, questioning whether those complications have pathogenetic roles<sup>16–18,21,22</sup>. To elucidate the significance of uninhibited mTOR signalling in ASD associated with TSC, eliminating the confounding effects of the neurological complications mentioned above is necessary, which is nearly impossible in the clinical setting.

Rodents that harbour a defect in the *Tsc1* or *Tsc2* gene have been extensively investigated<sup>23–26</sup>. Homozygous mutants are embryonically lethal, and heterozygotes develop tumours in various organs<sup>23,24</sup>. Intriguingly, mutant animals show neurological manifestations that are partially distinct from human TSC. Cortical tubers are absent in *Tsc1*<sup>+/-</sup> and *Tsc2*<sup>+/-</sup> rodents<sup>25,27</sup>, with exceptional occurrence in Eker rats<sup>28</sup>, a strain with a spontaneous mutation in the *Tsc2* gene. No report has described epileptic seizures in *Tsc1*<sup>+/-</sup> and *Tsc2*<sup>+/-</sup> rodents, whether spontaneous or induced by external stimuli. Nonetheless, *Tsc1*<sup>+/-</sup> and *Tsc2*<sup>+/-</sup> mice exhibit learning and memory deficits<sup>27,29</sup>. The mTOR inhibitor rapamycin reverses learning deficits in *Tsc2*<sup>+/-</sup> mice<sup>29</sup>, suggesting that pharmacological therapy of cognitive impairment in TSC should be directed towards mTOR inhibition<sup>14,19,20</sup>. Rodent models of TSC, which basically lack cortical tubers and epilepsy, appear to be appropriate for examining the causal role of mTOR signalling in ASD. However, autism-like behavioural abnormalities have been noticed in female *Tsc1*<sup>+/-</sup> mice<sup>27</sup> and male Eker rats<sup>30</sup>, although not in *Tsc2*<sup>+/-</sup> mice<sup>29,31</sup>. Systematic evaluation of ASD associated with

TSC requires behavioural and molecular investigations on both *Tsc1*<sup>+/-</sup> and *Tsc2*<sup>+/-</sup> mice using the same methods.

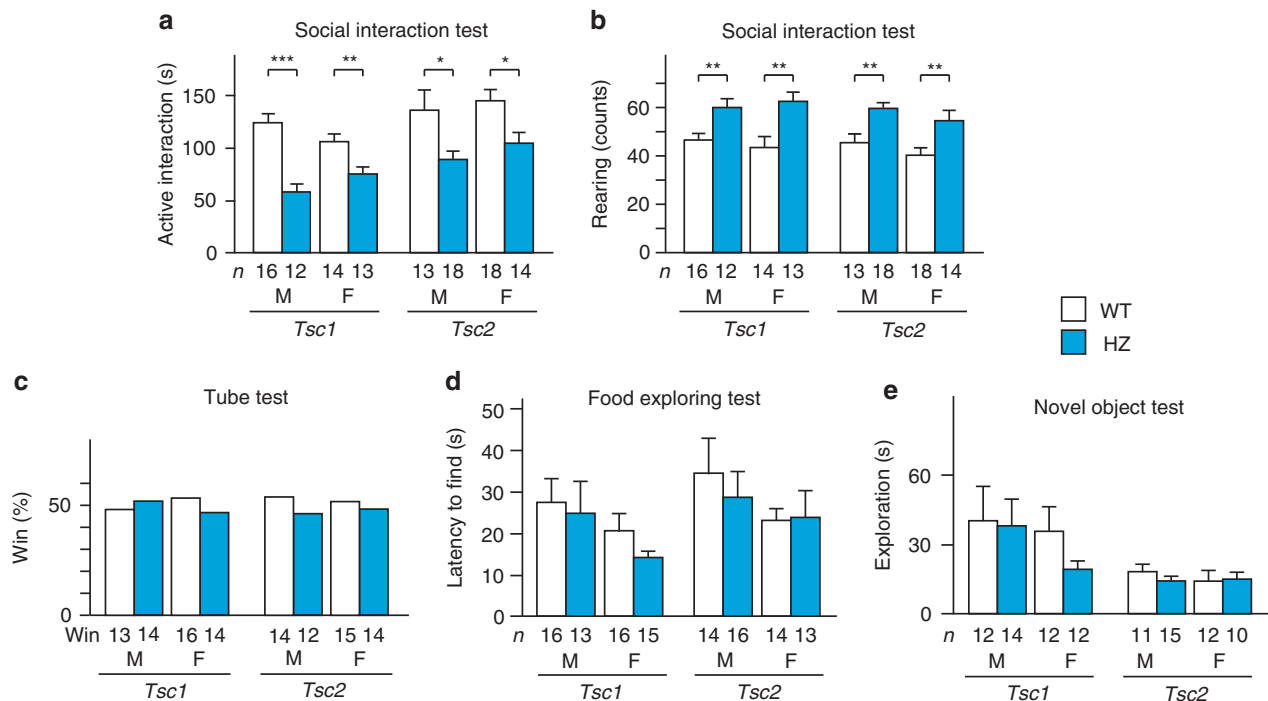
In the present study, we examined *Tsc1*<sup>+/-</sup> and *Tsc2*<sup>+/-</sup> mice of both sexes using the same testing protocol and observed deficient social behaviours relevant to core disabilities in ASD. Rapamycin reversed the behavioural abnormalities in *Tsc1*<sup>+/-</sup> and *Tsc2*<sup>+/-</sup> mice. In the brains of *Tsc2*<sup>+/-</sup> mice, mRNA expression and the phosphorylation of proteins related to the mTOR signalling pathway were altered and reversed by rapamycin. Given these findings, mTOR inhibitors may be useful for ASD associated with mTOR activation, even in adulthood.

## Results

**Deficient social interaction in *Tsc* mutant mice.** We first examined the mice using the social interaction test. *Tsc1*<sup>+/-</sup> and *Tsc2*<sup>+/-</sup> mice spent a shorter time engaged in active interaction (that is, exploring a novel mouse) than wild-type (WT) littermates ( $P < 0.0001$  (*Tsc1*),  $P = 0.0010$  (*Tsc2*) by two-way analysis of variance (ANOVA); Fig. 1a, Supplementary Movies 1 and 2). The reduction was not dependent on sex ( $P = 0.80$  (*Tsc1*),  $P = 0.32$  (*Tsc2*)) and remained significant in all subgroups segregated by mouse strain and sex ( $P < 0.0001$  (male *Tsc1*),  $P = 0.0099$  (female *Tsc1*),  $P = 0.018$  (male *Tsc2*),  $P = 0.025$  (female *Tsc2*) by two-tailed *t*-test). *Tsc1*<sup>+/-</sup> and *Tsc2*<sup>+/-</sup> mice also exhibited an increase in rearing behaviour ( $P < 0.0001$  [*Tsc1*],  $P < 0.0001$  [*Tsc2*] by two-way ANOVA; Fig. 1b). The difference was independent of sex ( $P = 1.0$  (*Tsc1*),  $P = 0.14$  (*Tsc2*)) and persisted in every subgroup ( $P = 0.0047$  (male *Tsc1*),  $P = 0.0020$  (female *Tsc1*),  $P = 0.0021$  (male *Tsc2*),  $P = 0.0072$  (female *Tsc2*) by two-tailed *t*-test). In the tube test, which examines social dominance, *Tsc1*<sup>+/-</sup> and *Tsc2*<sup>+/-</sup> mice and WT littermates won equally ( $P = 0.35$  (male *Tsc1*),  $P = 0.43$  (female *Tsc1*),  $P = 0.42$  (male *Tsc2*),  $P = 0.50$  (female *Tsc2*); Fig. 1c, Supplementary Table S1). These results indicate that deficient social interaction in *Tsc* mutant mice is not derived from altered social dominance.

We tested olfaction and exploratory behaviour, deficits of which could interfere with social interaction. *Tsc1*<sup>+/-</sup> and *Tsc2*<sup>+/-</sup> mice exhibited normal olfaction in the food exploration test compared with WT littermates (genotype:  $P = 0.40$  (*Tsc1*),  $P = 0.68$  (*Tsc2*); sex:  $P = 0.11$  (*Tsc1*),  $P = 0.22$  (*Tsc2*); Fig. 1d). Exploration towards an inanimate object was unaffected by genotype and sex (genotype:  $P = 0.43$  (*Tsc1*),  $P = 0.66$  (*Tsc2*); sex:  $P = 0.38$  (*Tsc1*),  $P = 0.65$  (*Tsc2*); Fig. 1e). Altogether, *Tsc* mutant mice appeared to exhibit impaired social interaction because they were specifically less interested in novel mice.

**Intact motor and sensory function in *Tsc* mutant mice.** We checked general and neurologic conditions and motor and sensory function. No overt abnormalities were found with regard to general condition, neurologic reflexes or body weight in *Tsc1*<sup>+/-</sup> and *Tsc2*<sup>+/-</sup> mice (Supplementary Tables S2 and S3). The mutant mice exhibited no motor deficits in the open-field test (genotype:  $P = 0.92$  (*Tsc1*),  $P = 0.26$  (*Tsc2*); sex:  $P = 0.77$  (*Tsc1*),  $P = 0.14$  (*Tsc2*); Fig. 2a), pole test (genotype:  $P = 0.29$  (*Tsc1*),  $P = 0.63$  (*Tsc2*); sex:  $P = 0.97$  (*Tsc1*),  $P = 0.28$  (*Tsc2*); Fig. 2b) or rotarod test (time course:  $P < 0.0001$  (*Tsc1*),  $P < 0.0001$  (*Tsc2*) by three-way mixed-design ANOVA; genotype:  $P = 0.21$  (*Tsc1*),  $P = 0.49$  (*Tsc2*); sex:  $P = 0.67$  (*Tsc1*),  $P = 0.074$  (*Tsc2*); Fig. 2c,d). Pain sensitivity in the hot plate test was similar between genotype and sex (genotype:  $P = 0.66$  (*Tsc1*),  $P = 0.23$  (*Tsc2*); sex:  $P = 0.46$  (*Tsc1*),  $P = 0.37$  (*Tsc2*); Fig. 2e). In the tail flick test, male *Tsc1* mice had longer latencies than female *Tsc1* mice ( $P = 0.0045$  by two-way ANOVA), whereas male and female *Tsc2* mice responded similarly ( $P = 0.18$ ; Fig. 2f). Genotype did not affect these results ( $P = 0.65$  (*Tsc1*),  $P = 0.82$  (*Tsc2*)). These results indicate



**Figure 1 | Behavioural phenotype of  $Tsc1^{+/-}$  and  $Tsc2^{+/-}$  mice.** (a) Active interaction time in the 10 min social interaction test. (b) Counts of rearing behaviour during the test. The data were compared between WT and heterozygous (HZ) mice. (c) The tube test showed no difference in social dominance between WT and HZ mice. (d) Time elapsed to find buried food in the food exploration test. (e) Total duration of exploring the object in the novel object test. F, female; M, male. The number of mice tested is shown in each panel. Error bars indicate s.e.m. \* $P < 0.05$ , \*\* $P < 0.01$ , \*\*\* $P < 0.001$  (two-tailed  $t$ -test).

the absence of significant abnormalities in motor and sensory function in  $Tsc1^{+/-}$  and  $Tsc2^{+/-}$  mice.

The mice were then analysed for depression and anxiety because these two conditions are commonly found in TSC-related ASD<sup>16,17</sup>. In the tail suspension test, immobility time in  $Tsc2^{+/-}$  mice was longer than in WT littermates ( $P = 0.63$  ( $Tsc1$ ),  $P = 0.044$  ( $Tsc2$ ) by two-way ANOVA; Fig. 2g), whereas no difference was observed for sex ( $P = 0.87$  ( $Tsc1$ ),  $P = 0.12$  ( $Tsc2$ )). This finding may correspond to a more severe  $TSC2$  mutation phenotype<sup>16,23,24,32,33</sup>. In the light/dark box test, the time spent in the dark compartment was not different for genotype and sex (genotype:  $P = 0.41$  ( $Tsc1$ ),  $P = 0.64$  ( $Tsc2$ ); sex:  $P = 0.17$  ( $Tsc1$ ),  $P = 0.35$  ( $Tsc2$ ); Fig. 2h). However, a significant genotype  $\times$  sex interaction was found in  $Tsc1$  mice ( $P = 0.0059$ ), and male  $Tsc1^{+/-}$  mice spent less time in the dark chamber than WT mice ( $P = 0.0099$  by two-tailed  $t$ -test), suggesting low anxiety in male  $Tsc1^{+/-}$  mice.

#### Recovered social deficits in $Tsc$ mutant mice by rapamycin.

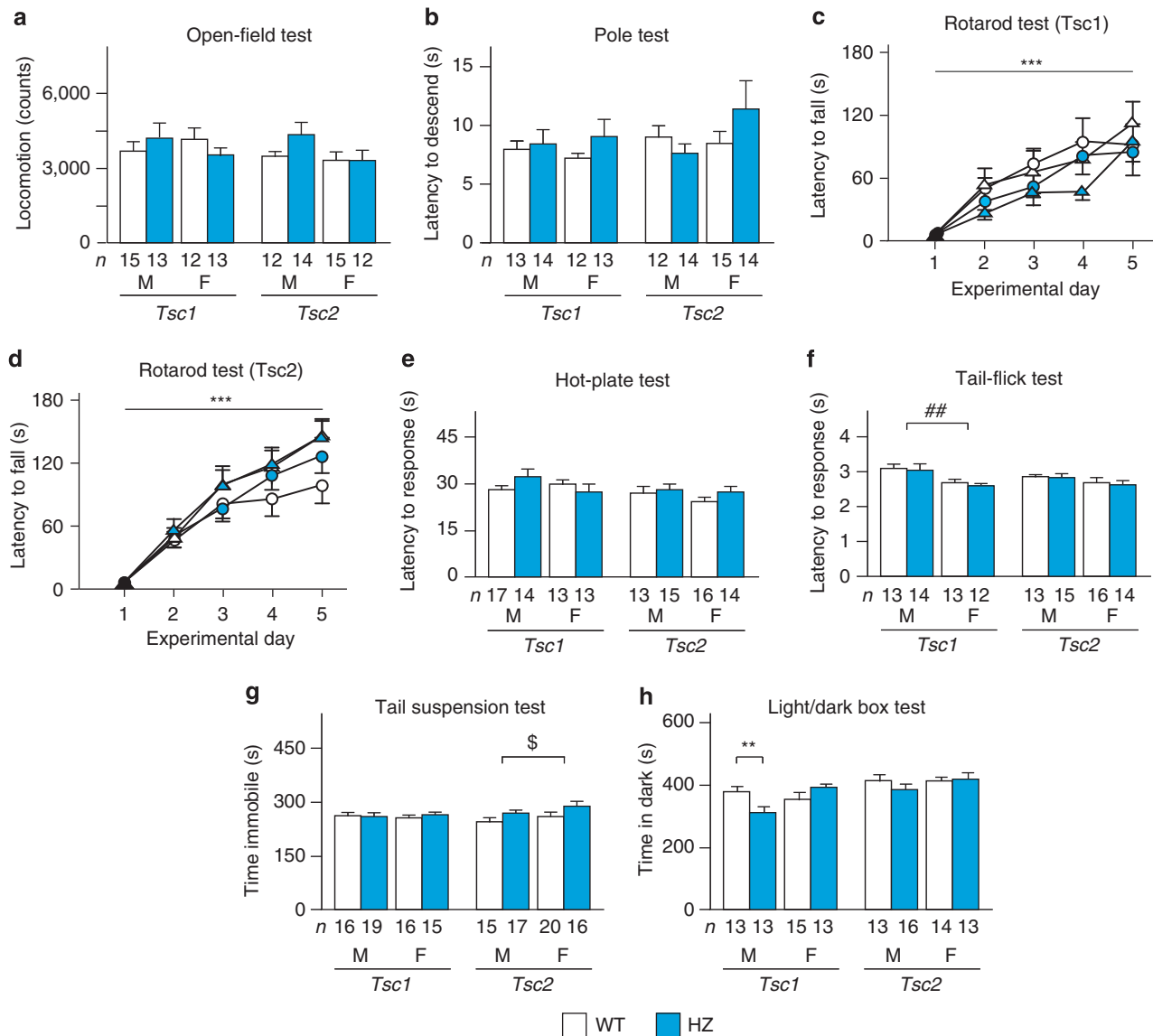
The effects of mTOR inhibition on reduced social interaction were then examined using adult heterozygotes. Active interaction in  $Tsc1^{+/-}$  and  $Tsc2^{+/-}$  mice responded to rapamycin treatment ( $P = 0.0012$  ( $Tsc1$ ),  $P = 0.0023$  ( $Tsc2$ ) by one-way ANOVA; Fig. 3a,b), whereas WT mice did not respond to this treatment ( $P = 0.80$  ( $Tsc1$ ),  $P = 0.98$  ( $Tsc2$ )). In both heterozygotes, rapamycin extended the time of active interaction at doses of 5 and 10 mg kg<sup>-1</sup> ( $P < 0.05$  by Dunette *post hoc* test; Supplementary Movie 3), although 2 mg kg<sup>-1</sup> was ineffective ( $P > 0.05$ ). When the genotypes were compared, the mutant mice displayed a reduction of active interaction following treatment with vehicle ( $P = 0.022$  ( $Tsc1$ ),  $P = 0.014$  ( $Tsc2$ ) by two-tailed  $t$ -test) and 2 mg kg<sup>-1</sup> rapamycin ( $P = 0.028$  ( $Tsc1$ ),  $P = 0.028$  ( $Tsc2$ ) by two-tailed  $t$ -test). Active interaction time was equal between genotypes

after rapamycin injections of 5 mg kg<sup>-1</sup> ( $P = 0.50$  ( $Tsc1$ ),  $P = 1.0$  ( $Tsc2$ )) and 10 mg kg<sup>-1</sup> ( $P = 0.51$  ( $Tsc1$ ),  $P = 0.86$  ( $Tsc2$ )). These results indicate that rapamycin recovered social interaction specifically in  $Tsc1^{+/-}$  and  $Tsc2^{+/-}$  mice.

Independent groups of mice were then examined for active interaction and rearing behaviour after treatment with 5 mg kg<sup>-1</sup> rapamycin.  $Tsc1^{+/-}$  and  $Tsc2^{+/-}$  mice that received vehicle exhibited a decrease in active interaction ( $P = 0.034$  ( $Tsc1$ ),  $P = 0.014$  ( $Tsc2$ ) by two-tailed  $t$ -test; Fig. 3c) and increase in rearing behaviour ( $P = 0.010$  ( $Tsc1$ ),  $P = 0.024$  ( $Tsc2$ ) by two-tailed  $t$ -test; Fig. 3d). Rapamycin treatment in the heterozygotes normalized active interaction ( $P = 0.018$  ( $Tsc1$ ),  $P = 0.0092$  ( $Tsc2$ ) by two-tailed  $t$ -test; Fig. 3c) and attenuated rearing behaviour ( $P = 0.0074$  ( $Tsc1$ ),  $P = 0.027$  ( $Tsc2$ ) by two-tailed  $t$ -test; Fig. 3d). WT mice did not respond to rapamycin with regard to active interaction ( $P = 0.67$  ( $Tsc1$ ),  $P = 0.74$  ( $Tsc2$ ); Fig. 3c), rearing behaviour ( $P = 1.0$  ( $Tsc1$ ),  $P = 0.34$  ( $Tsc2$ ); Fig. 3d), or locomotor activity ( $Tsc1$ :  $3,823 \pm 489$  versus  $3,176 \pm 385$ ,  $P = 0.31$ ,  $Tsc2$ :  $3,223 \pm 283$  versus  $3,087 \pm 286$ ,  $P = 0.74$ ; mean  $\pm$  s.e.m.).

**Altered gene and protein expressions in  $Tsc2^{+/-}$  mice.** The above findings suggest that haploinsufficiency of the  $Tsc1$  or  $Tsc2$  gene leads to uninhibited mTOR signalling and impaired social interaction. To determine the pathogenetic role of mTOR signalling, we analysed the brains from  $Tsc2^{+/-}$  mice because  $Tsc2$  mutations result in more severe phenotypic manifestations in mice<sup>23,24,33</sup> and humans<sup>16,32</sup>.

First, genes in the TSC-mTOR pathway were screened for mRNA expression intensity (Fig. 4a). In  $Tsc2^{+/-}$  mice,  $Tsc2$  mRNA intensity was lower than in WT animals ( $P = 0.0011$  by two-tailed  $t$ -test) and further decreased by rapamycin ( $P = 0.039$  by two-tailed  $t$ -test; Fig. 4b).  $Tsc1$  mRNA intensity was elevated ( $P = 0.049$  by two-tailed  $t$ -test), but its response to rapamycin was

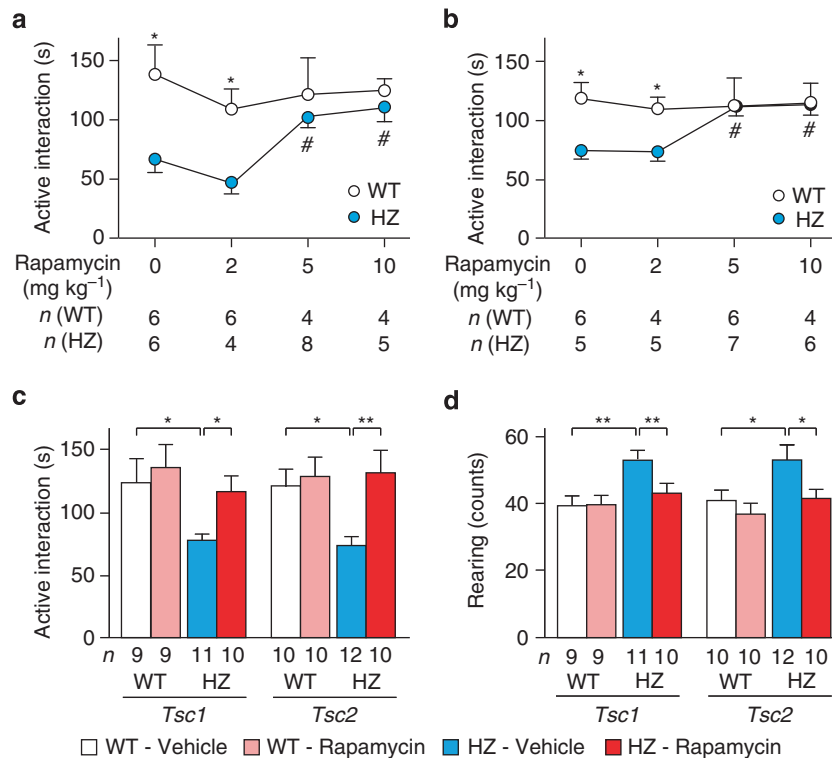


**Figure 2 | Motor ability and sensory function in  $Tsc1^{+/-}$  and  $Tsc2^{+/-}$  mice.** (a) Locomotor activity for 120 min. (b) Time to descend in the pole test. (c) Latency to fall in the rotarod test in  $Tsc1^{+/-}$  mice (open circles, male WT,  $n=10$ ; blue circles, male HZ,  $n=10$ ; open triangles, female WT,  $n=10$ ; blue triangles, female HZ,  $n=11$ ). (d) Latency to fall in the rotarod test in  $Tsc2^{+/-}$  mice (open circles, male WT,  $n=14$ ; blue circles, male HZ,  $n=12$ ; open triangles, female WT,  $n=10$ ; blue triangles, female HZ,  $n=11$ ). (e) Latency to lick the hindpaws or jump in the hot-plate test. (f) Latency to response in the tail-flick test. (g) Immobility time in the tail suspension test. (h) Time in the dark chamber in the light/dark box test. F, female; M, male. The number of mice tested is shown in each panel. Error bars indicate s.e.m.  $**P<0.01$  (genotype effect; two-tailed  $t$ -test);  $***P<0.001$  (time-course effect; three-way mixed-design ANOVA);  $##P<0.01$  (sex effect; two-way ANOVA);  $§P<0.05$  (genotype effect; two-way ANOVA).

marginal ( $P=0.061$ ; Fig. 4b). Among the genes upstream of  $Tsc1$  and  $Tsc2$ ,  $Gsk3b$  (that is, the gene that encodes for GSK3 $\beta$ ) and  $Mapk1$  (that is, the gene that encodes for ERK2) showed higher mRNA intensities in  $Tsc2^{+/-}$  mice ( $P=0.0081$  ( $Gsk3b$ ),  $P=0.038$  ( $Mapk1$ ) by two-tailed  $t$ -test), and rapamycin reversed them ( $P=0.023$  ( $Gsk3b$ ),  $P=0.016$  [ $Mapk1$ ] by two-tailed  $t$ -test; Fig. 4b). No changes were noticed in the mRNA levels of the other genes (Supplementary Fig. S1). Among the genes downstream of mTORC1,  $Ulk1$ ,  $Igfbp1$ ,  $Rps6$  (that is, the gene that encodes for S6) and  $Eef2k$  were increased in  $Tsc2^{+/-}$  mice ( $P=0.039$  ( $Ulk1$ ),  $P=0.043$  ( $Igfbp1$ ),  $P=0.036$  ( $Rps6$ ),  $P=0.034$  ( $Eef2k$ ) by two-tailed  $t$ -test; Fig. 4b). Rapamycin suppressed the expression of  $Ulk1$  and  $Eef2k$  ( $P=0.026$  ( $Ulk1$ ),  $P=0.049$  ( $Eef2k$ ) by two-tailed  $t$ -test; Fig. 4b) but not  $Igfbp1$  ( $P=0.10$ ) or  $Rps6$  ( $P=0.27$ ; Supplementary Fig. S2). Among the

components of mTORC1 and mTORC2,  $Deptor$  mRNA expression was enhanced in  $Tsc2^{+/-}$  mice ( $P=0.0021$  by two-tailed  $t$ -test) and normalized by rapamycin ( $P=0.033$  by two-tailed  $t$ -test; Fig. 4b). The transcription of the other genes illustrated in Fig. 4a remained unaltered in  $Tsc2^{+/-}$  brains (Supplementary Fig. S2 and S3).

The seven genes (that is,  $Tsc1$ ,  $Tsc2$ ,  $Deptor$ ,  $Ulk1$ ,  $Eef2k$ ,  $Gsk3b$  and  $Mapk1$ ) were then quantified using real-time PCR. In  $Tsc2^{+/-}$  mice, the level of  $Tsc2$  mRNA was reduced to two-thirds of the levels in WT mice ( $P=0.0041$  by two-tailed  $t$ -test) and insensitive to rapamycin (Supplementary Table S4).  $Tsc1$  mRNA levels nearly doubled ( $P=0.0023$  by two-tailed  $t$ -test) and returned to WT levels with rapamycin treatment ( $P=0.00066$  by two-tailed  $t$ -test; Supplementary Table S4). Only slight changes in mRNA levels were noticed for  $Gsk3b$ ,  $Mapk1$ ,  $Deptor$  and  $Ulk1$



**Figure 3 | Effects of rapamycin on social interaction and rearing in  $Tsc1^{+/-}$  and  $Tsc2^{+/-}$  mice.** (a) Active interaction time in  $Tsc1^{+/-}$  mice treated with different doses of rapamycin. (b) Active interaction time in  $Tsc2^{+/-}$  mice treated similarly. (c) Active interaction time in  $Tsc1^{+/-}$  and  $Tsc2^{+/-}$  mice treated with 5 mg kg<sup>-1</sup> rapamycin. (d) Counts of rearing behaviour in  $Tsc1^{+/-}$  and  $Tsc2^{+/-}$  mice during the test. The mice that were used in c and d were independent of those used in (a and b). Error bars indicate s.e.m. \* $P < 0.05$ , \*\* $P < 0.01$  (two-tailed *t*-test); # $P < 0.05$  (dose effect; Dunnett's *post hoc* test).

(Supplementary Table S4). We did not obtain measurable transcripts for the *Eef2k* gene.

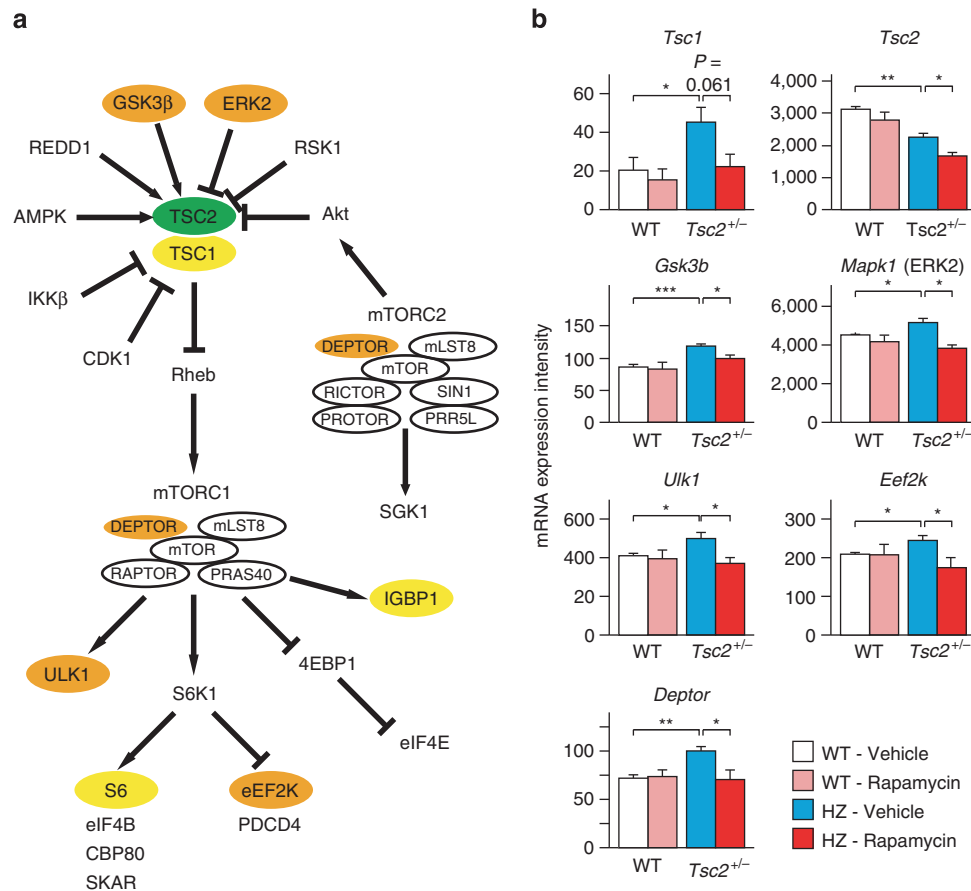
Finally, the status of the Tsc-mTOR signalling pathway followed by rapamycin treatment was examined at the protein level. In  $Tsc2^{+/-}$  mice, mTOR activation was reflected by an elevation of phospho-S6K levels ( $P = 0.012$  by two-tailed *t*-test; Fig. 5a, b). Two doses of rapamycin effectively suppressed S6K phosphorylation ( $P = 0.026$  by two-tailed *t*-test; Fig. 5a, b), whereas the treatment did not change total S6K levels (Supplementary Table S5). A mild decrease in tuberin was noticed in  $Tsc2^{+/-}$  brains ( $P = 0.023$  by two-way ANOVA), which was not rescued by rapamycin ( $P = 0.87$ ; Fig. 5a, b). The obvious change in *Tsc1* mRNA expression did not affect hamartin levels ( $P = 0.25$  (genotype),  $P = 0.40$  (treatment); Fig. 5a, b). We measured Akt phosphorylation because feedback inhibition of Akt by S6K<sup>34-36</sup> may modulate behaviour in  $Tsc2^{+/-}$  mice. Akt phosphorylation was mildly reduced in  $Tsc2^{+/-}$  mice ( $P = 0.024$  by two-way ANOVA; Fig. 5a, b) and unresponsive to rapamycin ( $P = 0.92$ ; Fig. 5a, b). Total Akt levels remained unchanged by *Tsc2* haploinsufficiency and rapamycin (Supplementary Table S5).

## Discussion

In the present study, we observed impaired social behaviour in  $Tsc1^{+/-}$  and  $Tsc2^{+/-}$  mice of both sexes. Moreover, the mTOR inhibitor rapamycin reversed the abnormality in adult heterozygotes. In  $Tsc2^{+/-}$  mice, the behavioural improvement was associated with inhibition of mTOR at the molecular level. These findings indicate that haploinsufficiency of the *Tsc1* or *Tsc2* gene causes social deficits via uninhibited mTOR signalling and that pharmacological inhibition of mTOR rescues social impairment in TSC, even in adulthood.

Earlier studies have disagreed with regard to deficient social behaviours in rodent models of TSC, partially because either  $Tsc1^{+/-}$  or  $Tsc2^{+/-}$  mice were investigated or different tasks were applied in each study<sup>27,29-31</sup>. By analysing  $Tsc1^{+/-}$  and  $Tsc2^{+/-}$  mice in the same environment and using the same testing approach, we found that these mutant animals exhibit a reduction of active interaction in the social interaction test, a core behavioural deficit relevant to ASD in humans<sup>3,4</sup> and rodents<sup>37</sup>. This finding is consistent with the strong association between TSC and ASD<sup>15-20</sup>. In addition, the impairment was similar in magnitude between male and female heterozygotes, reflecting the equal sex ratio in human patients with TSC-related ASD<sup>16,17</sup>. The reduced social interaction was unlikely derived from aversion to social or non-social novelty because social dominance and novelty exploration were unchanged. The reduction mentioned above contrasts with unaltered sociability in  $Tsc2^{+/-}$  mice<sup>29,31</sup>, which may be attributable to different testing approaches. In this context, behavioural analyses of an *Fmr1* knockout mouse model of Fragile X syndrome (FXS), another leading cause of syndromic ASD<sup>6,8</sup>, have also provided apparently conflicting data. The social recognition test revealed lower social interaction<sup>38</sup>, whereas the three-chambered social approach task did not find deficient sociability<sup>39</sup>. Assays that allow direct contact with novel animals may be more sensitive to the detection of social deficits in rodents, including  $Tsc1^{+/-}$ ,  $Tsc2^{+/-}$  and *Fmr1* knockout mice.

The present study first found that mTOR inhibition normalized deficient social interaction in  $Tsc1^{+/-}$  and  $Tsc2^{+/-}$  mice. As reported previously, rapamycin rescued learning deficits in  $Tsc2^{+/-}$  mice<sup>29</sup>. Rapamycin also reduced seizure frequency and ameliorated histological abnormalities in mice that lacked the *Tsc1* or *Tsc2* gene in astrocytes<sup>33</sup>. Impaired social interaction in female  $Tsc1^{+/-}$  mice<sup>27</sup> and male Eker rats<sup>30</sup>, however, has not



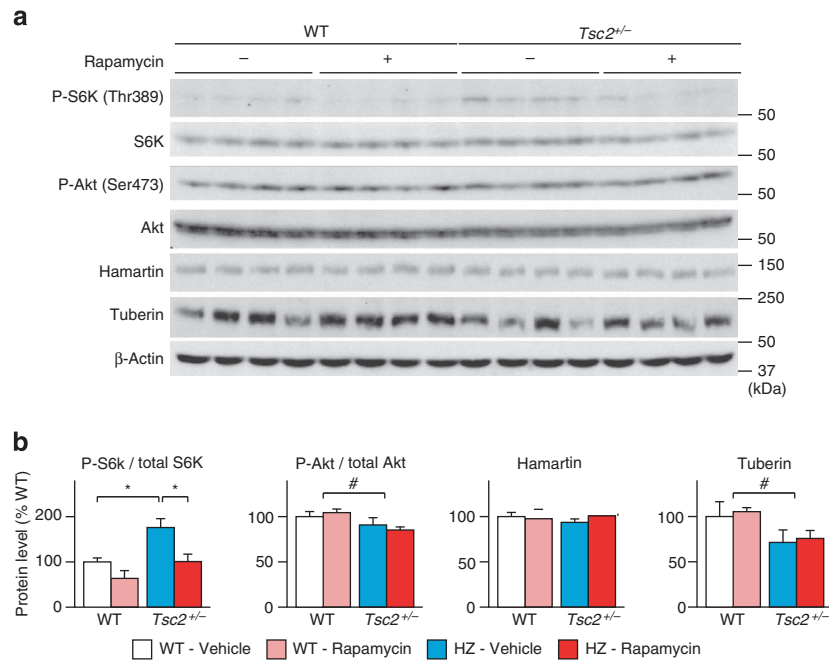
**Figure 4 | Transcription of the genes associated with mTOR signalling.** (a) mTOR signalling pathway in which mRNA expression was screened. Coloured genes represent the following: orange (genes whose levels showed a significant increase in *Tsc2*<sup>+/-</sup> mice and significant decrease following rapamycin treatment), yellow (genes whose levels showed a significant increase in *Tsc2*<sup>+/-</sup> mice and no reversal following rapamycin treatment), green (gene whose levels showed a significant decrease in *Tsc2*<sup>+/-</sup> mice and a further decline following rapamycin treatment). (b) Expression intensities of the genes that showed a significant change and response to rapamycin in *Tsc2*<sup>+/-</sup> mice ( $n = 4$  for each group segregated by genotype and treatment). Error bars indicate s.e.m. \* $P < 0.05$ , \*\* $P < 0.01$ , \*\*\* $P < 0.001$  (two-tailed  $t$ -test).

been investigated with regard to its treatment using mTOR inhibitors. Given that *Tsc1*<sup>+/-</sup> and *Tsc2*<sup>+/-</sup> mice lack cortical tubers and epileptic seizures<sup>25,27</sup>, the present research indicates that uninhibited mTOR that results from a mutation in the *Tsc1* or *Tsc2* gene directly disrupts social interaction. The above finding also highlights the usefulness of *Tsc1*<sup>+/-</sup> and *Tsc2*<sup>+/-</sup> mice as mouse models of pharmacologically treatable ASD. The effectiveness of rapamycin was demonstrated on one of the triad symptoms of ASD, impairment of reciprocal social interaction. Future research should focus on the remaining two components of ASD, impairment in communication and restrictive and repetitive behaviour.

In the present study, we observed an increase in rearing behaviour in *Tsc1*<sup>+/-</sup> and *Tsc2*<sup>+/-</sup> mice, which also responded to rapamycin. Remaining unknown, however, is what this behaviour represents with regard to ASD. Generally, rearing behaviour is considered an exploratory or escape behaviour<sup>40,41</sup>. Its significance may vary depending on the species, strains and experimental conditions. Rearing behaviour is decreased in some rodent strains with social deficits<sup>30,40,42</sup>, whereas it is increased in others<sup>43</sup>. The behaviour may be stimulated by environmental stress. For example, BALB/c mice, an inbred strain that exhibits autism-like behaviour<sup>40</sup>, showed a marked increase in rearing behaviour after exposure to a rat<sup>44</sup>. *Fmr1* knockout mice engaged in rearing and digging more than WT mice during a

three-chambered social approach task<sup>45</sup>. These facts allow us to speculate that the environment in the social interaction test may have either heightened the interest of *Tsc1*<sup>+/-</sup> and *Tsc2*<sup>+/-</sup> mice in the overhead direction or prompted them to escape from the environment. The effectiveness of rapamycin on this behaviour indicates that the increase in rearing behaviour is caused by dysregulated mTOR signalling. Research is necessary to reveal the underlying mechanisms of rearing behaviour and its significance, particularly with regard to ASD.

The disruption of *Tsc1* or *Tsc2* and subsequent hyperactivation of mTOR elicit several feedback responses. Particularly important is the feedback inhibition of Akt via S6K, a negative regulator of TSC2<sup>34–36</sup>. Akt phosphorylation is elevated in mice with deletions in *Pax6*<sup>46</sup> and *Pten*<sup>47,48</sup>. Impaired social interaction in these animals suggests the behavioural influence of Akt<sup>42,47,48</sup>. In *Pten* mutant mice, chronic treatment with rapamycin suppressed the phosphorylation of Akt and S6 and ameliorated the impairment in social interaction<sup>48</sup>. Thus, remaining to be solved was whether Akt, mTOR or both regulate social behaviour. In *Tsc2*<sup>+/-</sup> mice given short-term treatment with rapamycin, the feedback suppression of Akt remained unchanged when S6K phosphorylation and social interaction returned to normal. Rapamycin restored behavioural abnormalities and mTOR signalling, suggesting that uninhibited mTOR signalling is chiefly responsible for the social deficits in mouse models of



**Figure 5 | Western blots of proteins associated with the mTOR signalling pathway. (a)** Immunoblots for phospho- and total S6K, phospho- and total Akt, hamartin and tuberin. **(b)** Densitometric analysis of the four proteins ( $n = 4$  for each group segregated by genotype and treatment). Error bars indicate s.e.m. \* $P < 0.05$  (two-tailed  $t$ -test); # $P < 0.05$  (genotype effect; two-way ANOVA).

TSC. This strongly supports the ‘global regulator and integrator of a range of physiological processing (GRIPP) hypothesis’, in which mTOR activation produces cognitive impairments and neuropsychiatric conditions, such as ASD in TSC<sup>19,20</sup>.

The present findings, in addition to earlier animal studies, will prompt clinical research on the pharmacotherapy of neuropsychiatric disorders, such as ASD, with mTOR inhibitors. Rapamycin improved a wide range of neurological derangements, learning deficits, epileptic seizures and neuronal abnormalities in mouse models of TSC<sup>29,33</sup>. In clinical trials of the mTOR inhibitors rapamycin and everolimus for TSC-associated tumours, TSC patients displayed a reduced seizure frequency and improved memory function in addition to tumour shrinkage<sup>49,50</sup>. mTOR inhibitors may also benefit individuals who have other diseases in which TSC-mTOR signalling is involved<sup>14,19,20</sup>. Phenotypic amelioration of neural-specific *Pten* knockout mice<sup>48</sup> suggests that mTOR inhibitors may be feasible for the treatment of patients who carry *PTEN* mutations, constituting a substantial part of the genetic causes of ASD<sup>6,8</sup>. The altered mRNA expression of *Mapk1* and *Gsk3b* in *Tsc2*<sup>+/-</sup> mice may be related to dysregulated mTOR signalling observed in mouse models of neurofibromatosis type I<sup>51-53</sup> and FXS<sup>54,55</sup>. These two diseases are associated with neuropsychiatric complications, including ASD<sup>6,14,19,20</sup>, and mTOR inhibitors might be indicated. However, according to a recent publication, the hippocampus in *Tsc2*<sup>+/-</sup> mice exhibited deficient long-term synaptic depression dependent on metabotropic glutamate receptor 5 (mGluR5) and decreased protein synthesis<sup>56</sup>, the opposite of exaggerated mGluR5-dependent long-term synaptic depression and protein synthesis observed in *Fmr1* knockout mice<sup>57</sup>. Elevated mTOR activity is the primary cause of deficient social behaviour in TSC and *PTEN* mutations, whereas it may be a secondary change in FXS. Further investigations should elucidate the entire substrates that give rise to social deficits in these disorders that involve mTOR signalling.

In conclusion, we found that *Tsc1*<sup>+/-</sup> and *Tsc2*<sup>+/-</sup> mice, both male and female, exhibited deficient social interaction. The deficit

in adult heterozygotes was reversed by pharmacological inhibition of mTOR. We also demonstrated that the behavioural abnormality was associated with alterations of the mTOR signalling pathway at the mRNA and protein levels, which were rapamycin-sensitive. This indicates the pathogenetic role of aberrant mTOR signalling in social deficits and its reversible nature in *Tsc1*<sup>+/-</sup> and *Tsc2*<sup>+/-</sup> mice. The above findings are expected to encourage clinical trials of mTOR inhibitors as pharmacological treatments of ASD in individuals with TSC and possibly other disorders associated with dysregulated mTOR signalling.

## Methods

**Mice.** *Tsc1*<sup>+/-</sup> and *Tsc2*<sup>+/-</sup> mice were generated as previously described<sup>23,24</sup>, and backcrossed to a C57BL/6J background for more than 10 generations. All of the mice were housed in groups of 2–6 per cage, segregated by sex, in a room on a 12 h/12 h light/dark cycle (lights on at 8:00 AM, off at 8:00 PM) maintained at 22 ± 2 °C. All of the experiments were conducted blind to genotype and treatment and performed during the light cycle. The behavioural tests in the naive condition were performed at 8–10 weeks of age for open-field test, pole test and rotarod test. The remaining tests in the naive condition and all of the tests with rapamycin were conducted at 3–7 months of age. All of the animal experiments were performed in accordance with the Guidelines for the Care of Laboratory Animals of the Tokyo Metropolitan Institute of Medical Science, and the housing conditions were approved by the Institutional Animal Care and Use Committee.

**Rapamycin.** Rapamycin (LC Laboratories, Woburn, MA, USA) was dissolved in 10% dimethyl sulfoxide diluted with saline to 10 ml kg<sup>-1</sup>. The mice received the rapamycin solution (2, 5 and 10 mg kg<sup>-1</sup>) or an equal volume of vehicle by intraperitoneal injection once daily for 2 consecutive days. The behavioural tests and brain collection were performed 24 h after the second administration.

**Social interaction test.** Each mouse was left alone in its home cage for 15 min. An unfamiliar C57BL/6J mouse of the same sex was then introduced. The behaviour of the test mouse was video-recorded for 10 min and scored for active interaction (that is, sniffing, allo-grooming, mounting and following) and rearing behaviour.

**Tube test for social dominance.** A pair of WT mice and an unfamiliar heterozygous mouse of the same strain and sex were placed into opposite ends of a clear plastic tube (33 cm length, 3.5 cm (male) and 2.6 cm (female) diameter). The side from which the heterozygote entered was assigned alternately. The test ended when one mouse completely retreated from the tube, and the remaining mouse was

defined as the winner. The winners were analysed with regard to genotype, the side from which the winner entered, and differences in body weight that were >5%.

**Food exploration test.** Each mouse was deprived of food for 16 h before testing while water was freely available. The mouse was then placed in its home cage with one food pellet (0.5 g) buried 0.5 cm under the bedding material. The time required to find the food was measured by direct observation.

**Novel object test.** Each mouse was left alone in its home cage (32 × 21 × 13 cm) for 15 min. A white plastic bottle (6 cm diameter, 6 cm height) was then placed in the centre of the cage. The behaviour of the mouse was video-recorded for 10 min and analysed for exploration (that is, sniffing, touching or gnawing the bottle).

**Neurological examination and general condition.** Upon weaning at postnatal day 28–32, each mouse was observed for general appearance and neurological reflexes<sup>58</sup>. The mice were weighed at 6 weeks of age.

**Open-field test.** Each mouse was placed into a cylindrical open field (30 cm diameter, 30 cm height). Locomotor activity was counted using SuperMex (Muromachi Kikai, Tokyo, Japan) for 120 min.

**Pole test.** Each mouse was placed with its head facing upward on the top of a wooden pole (1 cm diameter, 50 cm height) vertically fixed to the floor. The mouse was first acclimated to the pole in three trials. Next day the mouse was allowed to descend five times in a single session. The latencies to reach the floor (that is, the time to descend) were measured, and the shortest latencies were kept.

**Rotarod test.** Each mouse was trained to run on a rotating rod (9 cm diameter, 10 rotations per minute; Muromachi Kikai, Tokyo, Japan) five times per day for 5 consecutive days. The longest latency to fall was recorded on each test day.

**Hot-plate test.** The mouse was placed on a heating apparatus (Muromachi Kikai, Tokyo, Japan) maintained at 52 °C. The time that elapsed until the mouse licked its hindpaw or jumped was measured by an experienced observer. The test was repeated three times at an interval of 15 min, and the median values were analysed.

**Tail flick test.** Each mouse was wrapped with black velvet, and its tail was heated (Muromachi Kikai, Tokyo, Japan). The latency to flick the tail was measured automatically. The median values of three measurements were collected.

**Tail suspension test.** Each mouse was suspended with adhesive tape so that its whiskers did not touch the floor. Immobility was detected automatically (MicroAct ver. 1.0, Neuroscience, Tokyo, Japan) for 6 min.

**Light/dark box test.** The test apparatus consisted of a plastic box (35 × 15 × 17 cm) divided into two compartments of equal size, separated by two small openings. One chamber was white and brightly lit (580 lux), and the other was black and kept dark. Each mouse was placed into the light compartment and allowed to move freely for 10 min. The time spent staying in the dark chamber was measured automatically (Neuroscience, Tokyo, Japan).

**Whole-genome expression analysis.** Total RNA was isolated from whole brain using Sepasol-RNA I Super solution (Nacalai Tesque, Kyoto, Japan), and the extracted RNAs (50 ng) were amplified with the TargetAmp Nano-g Biotin-aRNA Labelling Kit (Epicentre Biotechnologies, Madison, WI, USA). First-strand cDNA was synthesized from total RNA with T7-oligo (dT) primer, and second-strand cDNA synthesis was then performed with the first-strand cDNA. The *in vitro* transcription reaction was performed with the product of the second-strand cDNA synthesis to produce biotin-cRNAs by incorporating biotin-UTP into the RNA transcripts. Biotin-cRNA (750 ng) was further hybridized with MouseRef-8 Expression BeadChips (Illumina, San Diego, CA, USA) and then reacted with streptavidin-Cy3. The expression intensities of the transcripts on the BeadChips were detected by an Illumina iScan reader (Illumina, San Diego, CA, USA) as values above the internal standard.

**Quantitative real-time PCR analysis.** Quantitative real-time PCR analysis was performed using a LightCycler 480 II system (Roche Diagnostics Japan, Tokyo, Japan). The cDNAs were reverse-transcribed from total RNAs isolated from whole brains with the SuperScript III First-Strand Synthesis System for real-time PCR according to the manufacturer's instructions (Invitrogen Life Technologies Japan, Tokyo, Japan). The specific primers and hybridization probes (Universal ProbeLibrary Probes) for real-time PCR were designed using a web-based platform, Universal ProbeLibrary Assay Design Center (Roche Diagnostics Japan; Supplementary Table S6). Real-time PCR was performed with a LightCycler 480 Probes Master, specific primers and Universal ProbeLibrary probes. The PCR thermal cycle conditions were the following: 95 °C for 5 min (denature); 45 cycles at 95 °C for 10 s,

60 °C for 30 s and 72 °C for 1 s (amplification); 95 °C for 10 s, 50 °C for 30 s and up to 70 °C (ramping rate, 0.06 °C s<sup>-1</sup>; melting curve). PCR was performed in duplicate wells for each target transcript and sample, and the relative expression of target transcripts, calculated using the comparative C<sub>T</sub> method with the second derivative maximum procedure, was normalized to that of β-actin mRNA.

**Antibodies.** A rabbit anti-mouse hamartin polyclonal antibody (TSC1/Hamartin(T1146), 1.5 μg ml<sup>-1</sup>) was produced by immunization with a synthetic peptide that consisted of a carboxy-terminal sequence (GQLHIMDYNETHPEHS) and cysteine residue for conjugation and purified by antigen peptide affinity chromatography (Immuno-Biological Laboratories, Gunma, Japan). Rabbit anti-tuberin (1 μg ml<sup>-1</sup>), anti-actin (0.4 μg ml<sup>-1</sup>) and anti-S6K (0.4 μg ml<sup>-1</sup>) antibodies were purchased from Santa Cruz Biotechnology (Santa Cruz, CA, USA). Rabbit anti-phospho-Akt (S473) (1:500), anti-Akt (1:500), and anti-phospho-S6K (T389) (1:500) antibodies were purchased from Cell Signaling Technology (Danvers, MA, USA).

**Western blotting.** Whole brains were homogenized by a tissue homogenizer in 1 × SDS gel-loading buffer (50 mM Tris-HCl at pH 6.8, 2% SDS and 10% glycerol). The supernatant was obtained by centrifugation, and the protein concentration was determined using the Bio-Rad DC Protein Assay Kit (Bio-Rad Laboratories, Hercules, CA, USA). Equal amounts of protein extracted were added with 5% mercaptoethanol and boiled. Proteins were resolved by SDS-PAGE, transferred onto a polyvinylidene fluoride membrane (Immobilon-P, Merck Millipore, Billerica, MA, USA) and blocked in 1% skim milk/Tris-buffered saline that contained 0.05% Tween 20 at room temperature for 2 h. The membranes were incubated with the primary antibodies at room temperature for 1 h. Protein bands were detected using the EnVision + Kit (Dako, Glostrup, Denmark) and ECL Western Blotting Detection System (GE Healthcare, Buckinghamshire, UK) and quantitatively analysed using ImageJ software (ver. 1.45). The values of each protein were normalized to that of actin.

**Statistical analysis.** The statistical analyses were conducted with StatView ver. 5.0 software (SAS Institute). Data were analysed using a two-tailed *t*-test, one-way ANOVA followed by Dunnett *post hoc* test, two-way ANOVA, and three-way mixed design ANOVA as noted in the test. A binominal test was used for the tube test. Data from the rapamycin experiments were pooled with regard to sex before the statistical analysis. Values of *P* < 0.05 were considered statistically significant.

## References

- Baird, G. *et al.* Prevalence of disorders of the autism spectrum in a population cohort of children in South Thames: the Special Needs and Autism Project (SNAP). *Lancet* **368**, 210–215 (2006).
- American Psychiatric Association. *Diagnostic and Statistical Manual of Mental Disorders*, 4th edn. text revision. (American Psychiatric Association, Washington DC, 2000).
- Happé, F. & Ronald, A. The 'fractionable autism triad': a review of evidence from behavioural, genetic, cognitive and neural research. *Neuropsychol. Rev.* **412**, 287–304 (2008).
- Constantino, J. N. The quantitative nature of autistic social impairment. *Pediatr. Res.* **69**, 55R–62R (2011).
- Rosenberg, R. E. *et al.* Characteristics and concordance of autism spectrum disorders among 277 twin pairs. *Arch. Pediatr. Adolesc. Med.* **163**, 907–914 (2009).
- Caglayan, A. O. Genetic causes of syndromic and non-syndromic autism. *Dev. Med. Child Neurol.* **52**, 130–138 (2010).
- Pinto, D. *et al.* Functional impact of global rare copy number variation in autism spectrum disorders. *Nature* **466**, 368–372 (2010).
- Abrahams, B. S. & Geschwind, D. H. Advances in autism genetics: on the threshold of a new neurobiology. *Nat. Rev. Genet.* **9**, 341–355 (2008).
- Posey, D. J., Stigler, K. A., Erickson, C. A. & McDougle, C. J. Antipsychotics in the treatment of autism. *J. Clin. Invest.* **118**, 6–14 (2008).
- van Slegtenhorst, M. *et al.* Identification of the tuberous sclerosis gene TSC1 on chromosome 9q34. *Science* **277**, 805–808 (1997).
- European Chromosome 16 Tuberous Sclerosis Consortium. Identification and characterization of the tuberous sclerosis gene on chromosome 16. *Cell* **75**, 1305–1315 (1993).
- Roach, E. S., Gomez, M. R. & Northrup, H. Tuberous sclerosis complex consensus conference: revised clinical diagnostic criteria. *J. Child Neurol.* **13**, 624–628 (1998).
- Kwiatkowski, D. J. & Manning, B. D. Tuberous sclerosis: a GAP at the crossroads of multiple signaling pathways. *Hum. Mol. Genet.* **14** (Spec. No. 2) R251–R258 (2005).
- Ehninger, D. & Silva, A. J. Rapamycin for treating tuberous sclerosis and autism spectrum disorders. *Trends Mol. Med.* **17**, 78–87 (2011).
- Bolton, P. F., Park, R. J., Higgins, J. N. P., Griffiths, P. D. & Pickles, A. (2002) Neuro-epileptic determinants of autism spectrum disorders in tuberous sclerosis complex. *Brain* **125**, 1247–1255.



16. Lewis, J. C., Thomas, H. V., Murphy, K. C. & Sampson, J. R. Genotype and psychological phenotype in tuberous sclerosis. *J. Med. Genet.* **41**, 203–207 (2004).
17. de Vries, P. J., Hunt, A. & Bolton, P. F. The psychopathologies of children and adolescents with tuberous sclerosis complex (TSC): a postal survey of UK families. *Eur. Child Adolesc. Psychiatry* **16**, 16–24 (2007).
18. Numis, A. L. *et al.* Identification of risk factors for autism spectrum disorders in tuberous sclerosis complex. *Neurology* **76**, 981–987 (2011).
19. de Vries, P. J. & Howe, C. J. The tuberous sclerosis complex proteins - a GRIPP on cognition and neurodevelopment. *Trends Mol. Med.* **13**, 319–326 (2007).
20. de Vries, P. J. Targeted treatments for cognitive and neurodevelopmental disorders in tuberous sclerosis complex. *Neurotherapeutics* **7**, 275–282 (2010).
21. Bolton, P. F. & Griffiths, P. D. Association of tuberous sclerosis of temporal lobes with autism and atypical autism. *Lancet* **349**, 392–395 (1997).
22. Walz, N. C., Byars, A. W., Egelhoff, J. C. & Franz, D. N. Supratentorial tuber location and autism in tuberous sclerosis complex. *J. Child Neurol.* **17**, 830–832 (2002).
23. Kobayashi, T. *et al.* A germ-line *Tsc1* mutation causes tumor development and embryonic lethality that are similar, but not identical to, those caused by *Tsc2* mutation in mice. *Proc. Natl Acad. Sci. USA* **98**, 8762–8767 (2001).
24. Kobayashi, T. *et al.* Renal carcinogenesis, hepatic hemangiomas, and embryonic lethality caused by a germ-line *Tsc2* mutation in mice. *Cancer Res.* **59**, 1206–1211 (1999).
25. Onda, H., Lueck, A., Marks, P. W., Warren, H. B. & Kwiatkowski, D. J. *Tsc2*<sup>+/-</sup> mice develop tumors in multiple sites that express gelsolin and are influenced by genetic background. *J. Clin. Invest.* **104**, 687–695 (1999).
26. Kobayashi, T., Hirayama, Y., Kobayashi, E., Kubo, Y. & Hino, O. A germline insertion in the tuberous sclerosis (*Tsc2*) gene gives rise to the Eker rat model of dominantly inherited cancer. *Nat. Genet.* **9**, 70–74 (1995).
27. Goorden, S. M., van Woerden, G. M., van der Weerd, L., Cheadle, J. P. & Elgersma, Y. Cognitive deficits in *Tsc1*<sup>+/-</sup> mice in the absence of cerebral lesions and seizures. *Ann. Neurol.* **62**, 648–655 (2007).
28. Mizuguchi, M. *et al.* Novel cerebral lesions in the Eker rat model of tuberous sclerosis: cortical tuber and anaplastic ganglioglioma. *J. Neuropathol. Exp. Neurol.* **59**, 188–196 (2000).
29. Ehninger, D. *et al.* Reversal of learning deficits in a *Tsc2*<sup>+/-</sup> mouse model of tuberous sclerosis. *Nat. Med.* **14**, 843–848 (2008).
30. Waltereit, R., Japs, B., Schneider, M., de Vries, P. J. & Bartsch, D. Epilepsy and *Tsc2* haploinsufficiency lead to autistic-like social deficit behaviors in rats. *Behav. Genet.* **41**, 364–372 (2011).
31. Ehninger, D. *et al.* Gestational immune activation and *Tsc2* haploinsufficiency cooperate to disrupt fetal survival and may perturb social behavior in adult mice. *Mol. Psychiatry* **17**, 62–70 (2012).
32. Dabora, S. L. *et al.* Mutational analysis in a cohort of 224 tuberous sclerosis patients indicates increased severity of *TSC2*, compared with *TSC1*, disease in multiple organs. *Am. J. Hum. Genet.* **68**, 64–80 (2001).
33. Zeng, L. H. *et al.* *Tsc2* gene inactivation causes a more severe epilepsy phenotype than *Tsc1* inactivation in a mouse model of tuberous sclerosis complex. *Hum. Mol. Genet.* **20**, 445–454 (2011).
34. Jaeschke, A. *et al.* Tuberous sclerosis complex tumor suppressor-mediated S6 kinase inhibition by phosphatidylinositol-3-OH kinase is mTOR independent. *J. Cell Biol.* **159**, 217–224 (2002).
35. Inoki, K., Li, Y., Zhu, T., Wu, J. & Guan, K. L. TSC2 is phosphorylated and inhibited by Akt and suppresses mTOR signalling. *Nat. Cell Biol.* **4**, 648–657 (2002).
36. Manning, B. D., Tee, A. R., Logsdon, M. N., Blenis, J. & Cantley, L. C. Identification of the tuberous sclerosis complex-2 tumor suppressor gene product tuberin as a target of the phosphoinositide 3-kinase/akt pathway. *Mol. Cell* **10**, 151–162 (2002).
37. Silverman, J. L., Yang, M., Lord, C. & Crawley, J. N. Behavioural phenotyping assays for mouse models of autism. *Nat. Rev. Neurosci.* **11**, 490–502 (2010).
38. Mineur, Y. S., Huynh, L. X. & Crusio, W. E. Social behavior deficits in the *Fmr1* mutant mouse. *Behav. Brain Res.* **168**, 172–175 (2006).
39. McNaughton, C. H. *et al.* Evidence for social anxiety and impaired social cognition in a mouse model of fragile X syndrome. *Behav. Neurosci.* **122**, 293–300 (2008).
40. Brodtkin, E. S., Hagemann, A., Nemetski, S. M. & Silver, L. M. Social approach-avoidance behavior of inbred mouse strains towards DBA/2 mice. *Brain Res.* **1002**, 151–157 (2004).
41. Lever, C., Burton, S. & O'Keefe, J. Rearing on hind legs, environmental novelty, and the hippocampal formation. *Rev. Neurosci.* **17**, 111–133 (2006).
42. Umeda, T. *et al.* Evaluation of Pax6 mutant rat as a model for autism. *PLoS One* **5**, e15500 (2010).
43. Ryan, B. C., Young, N. B., Crawley, J. N., Bodfish, J. W. & Moy, S. S. Social deficits, stereotypy and early emergence of repetitive behavior in the C58/J inbred mouse strain. *Behav. Brain Res.* **208**, 178–188 (2010).
44. Brinks, V., van der Mark, M., de Kloet, R. & Oitzl, M. Emotion and cognition in high and low stress sensitive mouse strains: a combined neuroendocrine and behavioral study in BALB/c and C57BL/6J mice. *Front. Behav. Neurosci.* **1**, 8 (2007).
45. Mines, M. A., Yuskaitis, C. J., King, M. K., Beurel, E. & Jope, R. S. GSK3 influences social preference and anxiety-related behaviors during social interaction in a mouse model of fragile X syndrome and autism. *PLoS One* **5**, e9706 (2010).
46. Sakurai, K. & Osumi, N. The neurogenesis-controlling factor, Pax6, inhibits proliferation and promotes maturation in murine astrocytes. *J. Neurosci.* **28**, 4604–4612 (2008).
47. Kwon, C. H. *et al.* Pten regulates neuronal arborization and social interaction in mice. *Neuron* **50**, 377–388 (2006).
48. Zhou, J. *et al.* Pharmacological inhibition of mTORC1 suppresses anatomical, cellular, and behavioral abnormalities in neural-specific *Pten* knock-out mice. *J. Neurosci.* **29**, 1773–1783 (2009).
49. Krueger, D. A. *et al.* Everolimus for subependymal giant-cell astrocytomas in tuberous sclerosis. *N. Engl. J. Med.* **363**, 1801–1811 (2010).
50. Davies, D. M. *et al.* Sirolimus therapy for angiomyolipoma in tuberous sclerosis and sporadic lymphangiomyomatosis: a phase 2 trial. *Clin. Cancer Res.* **17**, 4071–4081 (2011).
51. Li, W. *et al.* The HMG-CoA reductase inhibitor lovastatin reverse the learning and attention deficits in a mouse model of neurofibromatosis type 1. *Curr. Biol.* **15**, 1961–1967 (2005).
52. Johannessen, C. M. *et al.* The NF1 tumor suppressor critically regulates TSC2 and mTOR. *Proc. Natl Acad. Sci. USA* **102**, 8573–8578 (2005).
53. Ma, L. *et al.* Identification of S664 TSC2 phosphorylation as a marker for extracellular signal-regulated kinase mediated mTOR activation in tuberous sclerosis and human cancer. *Cancer Res.* **67**, 7106–7112 (2007).
54. Min, W. W. *et al.* Elevated glycogen synthase kinase-3 activity in Fragile X mice: key metabolic regulator with evidence for treatment potential. *Neuropharmacology* **56**, 463–472 (2009).
55. Sharma, A. *et al.* Dysregulation of mTOR signaling in fragile X syndrome. *J. Neurosci.* **30**, 694–702 (2010).
56. Auerbach, B. D., Osterweil, E. K. & Bear, M. F. Mutations causing syndromic autism define an axis of synaptic pathophysiology. *Nature* **480**, 63–68 (2011).
57. Dolen, G. *et al.* Correction of fragile X syndrome in mice. *Neuron* **56**, 955–962 (2007).
58. Crawley, J. N. & Paylor, R. A proposed test battery and constellations of specific behavioral paradigms to investigate the behavioral phenotypes of transgenic and knockout mice. *Horm. Behav.* **31**, 197–211 (1997).

## Acknowledgements

We thank Tetsuo Noda (The Cancer Institute of Japanese Foundation for Cancer Research) for establishing the *Tsc1*<sup>+/-</sup> and *Tsc2*<sup>+/-</sup> mice used in this study. We appreciate members of Immuno-Biological Laboratories (IBL) Co., Ltd. for the production of the anti-hamartin antibody. This work was supported by a Grant-in-Aid for Exploratory Research (22659190) from the Japan Society for the Promotion of Science, Grant-in-Aid for Scientific Research (H20-Nanji-Ippan-031) from the Ministry of Health, Labour and Welfare, Japan and Intramural Research Grant (22–6) for Neurological and Psychiatric Disorders from the National Center Neurology and Psychiatry.

## Author contributions

A.S., T.K., O.H., K.I. and M.M. provide the study concept and design. A.S., S.K., T.K. and Y.K. performed the experiments. A.S., S.K., T.K., K.I. and M.M. were involved in drafting of the manuscript. K.I. and M.M. were involved in critical revision of the manuscript for important intellectual content.

## Additional information

**Supplementary Information** accompanies this paper on <http://www.nature.com/naturecommunications>

**Competing financial interests:** The authors declare no competing financial interests.

**Reprints and permission** information is available online at <http://npg.nature.com/reprintsandpermissions/>

**How to cite this article:** Sato, A. *et al.* Rapamycin reverses impaired social interaction in mouse models of tuberous sclerosis complex. *Nat. Commun.* **3**:1292 doi: 10.1038/ncomms2295 (2012).



This work is licensed under a Creative Commons Attribution-NonCommercial-ShareAlike 3.0 Unported License. To view a copy of this license, visit <http://creativecommons.org/licenses/by-nc-sa/3.0/>