

ARTICLE

Received 29 Nov 2011 | Accepted 6 Jul 2012 | Published 7 Aug 2012

DOI: 10.1038/ncomms1994

High-resolution three-dimensional partially coherent diffraction imaging

J.N. Clark¹, X. Huang¹, R. Harder² & I.K. Robinson^{1,3}

The wave properties of light, particularly its coherence, are responsible for interference effects, which can be exploited in powerful imaging applications. Coherent diffractive imaging relies heavily on coherence and has recently experienced rapid growth. Coherent diffractive imaging recovers an object from its diffraction pattern by computational phasing with the potential of wavelength-limited resolution. Diminished coherence results in reconstructions that suffer from artefacts or fail completely. Here we demonstrate *ab initio* phasing of partially coherent diffraction patterns in three dimensions, while simultaneously determining the coherence properties of the illuminating wavefield. Both the dramatic improvements in image interpretability and the three-dimensional evaluation of the coherence will have broad implications for quantitative imaging of nanostructures and wavefield characterization with X-rays and electrons.

¹ London Centre for Nanotechnology, University College London, London WC1E 6BT, UK. ² Advanced Photon Source, Argonne, Illinois 60439, USA. ³ Research Complex at Harwell, Didcot, Oxfordshire OX11 0DE, UK. Correspondence and requests for materials should be addressed to J.N.C. (email: jesse.clark@ucl.ac.uk).

As a lensless imaging method, coherent diffractive imaging (CDI) offers great opportunities to image a wide variety of samples^{1–4} in two and three dimensions^{5,6} with atomic resolution⁴ and on ultrafast timescales when used at X-ray free electron laser (XFEL) sources^{7,8}. CDI works by illuminating a sample with a coherent wavefield after which the coherent diffraction pattern is recorded. The missing phase of the diffracted wave is retrieved through iterative⁹ or single-step methods¹⁰. Paramount to the success of CDI is the use of fully coherent wavefields. Using partially coherent wavefields results in significant unphysical density modulations in the recovered amplitude^{2,5,11,12} compromising the verisimilitude of the recovered image. Important applications of CDI include nanoparticle imaging, where quantitative strain mapping can be achieved through the phase of the images¹³. An underlying theme of nanoscience is the emergence of new phases of matter at small sizes¹⁴ and size-dependent phase transitions, which would be detectable as small density variations within the crystals. Strong surface segregation effects expected in alloys would be detected through the density change, as would be surface vacancy proliferation. All of these effects remain unexplored at the present state of development of CDI because the density maps of the images produced are not very reliable. XFEL sources experience shot to shot variations in the coherence properties¹⁵, potentially limiting their ability for single-shot diffract and destroy imaging. Furthermore, the XFEL pulse transverse coherence lengths are still comparable in size¹⁵ to many objects of interest to CDI, meaning that methods that both characterize the coherence and image simultaneously are needed.

Further applications of CDI involve the use of electron sources. These offer the potential for atomic scale imaging¹⁶ of materials, including light elements¹⁷ and biomolecules on ultrafast timescales. However, the coherence lengths of the electron sources are still too small for many samples limiting its potentially enormous applications. Even with the advent of cold sources with improved coherence properties¹⁸, the lengths are still small compared with many samples of interest. Recently, new research avenues using CDI have been opened by the ability to image both crystalline¹⁹ and non-crystalline²⁰ samples of arbitrary size in three dimensions using ptychography. The ability to perform these measurements at partially coherent sources (including lab-based X-ray²¹) or to utilize more flux to reduce the lengthy data acquisition times will be of huge benefit to materials and biological sciences. In addition, the ability to recover the coherence properties of an illuminating beam will find widespread use in characterising optical components²² for synchrotron or XFEL sources.

The CDI method images by inversion of the wavefield diffracted by an isolated object. Isolation of the object ensures that a minimum sampling requirement is met when the diffracted intensity is recorded. If the sample is not sufficiently isolated, the illuminating wavefield can be used to define the extent of the sample²³ while using overlap between adjacent positions that facilitates imaging of extended objects²⁰. Essential for CDI is the requirement that the illuminating wavefield is coherent. Many CDI experiments use third-generation synchrotron or electron sources that can be far from fully coherent^{24,25}. Consequently, there has been recent progress in adapting the current algorithms to accommodate both spatial^{26,27} and temporal^{28,29} partial coherence. Until now, these methods have been limited to two dimensions with either complete or partial *a priori* knowledge of the coherence properties of the illumination. Here, we demonstrate successful inversion of three-dimensional (3D) partially coherent diffraction patterns using a modified iterative algorithm that allows recovery of objects from partially coherent diffraction patterns while simultaneously recovering coherence properties of the illuminating wavefield without *a priori* assumptions about 3D form. This work identifies an important reason for the failure of current methods and demonstrates a way to obtain

dramatic improvements in the presence of less-than-ideal coherence. The method described here is applicable to all applications of iterative CDI, including those from synchrotron, XFEL or electron sources covering 2D and 3D imaging including ptychography.

Results

Partial coherence. Under the far-field approximation, the diffracted intensity, $I(\mathbf{q})$, from a sample's complex electron density, $\rho(\mathbf{r})$, for spatially coherent monochromatic plane wave radiation is given by

$$I(\mathbf{q}) = \iint \rho(\mathbf{r}_1) \rho^*(\mathbf{r}_2) \exp[i\mathbf{q} \cdot (\mathbf{r}_1 - \mathbf{r}_2)] d\mathbf{r}_1 d\mathbf{r}_2 \quad (1)$$

$$= |\hat{\psi}(\mathbf{q})|^2 \quad (2)$$

where \mathbf{r} is a sample space coordinate, \mathbf{q} is a reciprocal space coordinate, $\hat{\psi}$ is the complex scalar diffracted wavefield given by, $\hat{\psi}(\mathbf{q}) = |\hat{\psi}(\mathbf{q})| \exp[i\phi(\mathbf{q})]$. Iterative algorithms are used to recover the phase of $\hat{\psi}$ by enforcing constraints in the detector and sample plane. The first of the two more common constraints is the modulus constraint, which requires that the amplitude of the wavefield at the detector agrees with that measured (from its intensity). The second constraint is the support constraint, which assumes *a priori* that the sample is finite in extent. When the radiation is partially coherent, the diffracted intensity is now given by²⁴

$$I(\mathbf{q}) = \iint J(\mathbf{r}_1, \mathbf{r}_2) \gamma_{\parallel}(\mathbf{r}_2 - \mathbf{r}_1) \rho(\mathbf{r}_1) \rho^*(\mathbf{r}_2) \exp[i\mathbf{q} \cdot (\mathbf{r}_1 - \mathbf{r}_2)] d\mathbf{r}_1 d\mathbf{r}_2 \quad (3)$$

where $J(\mathbf{r}_1, \mathbf{r}_2)$ is the mutual optical intensity (MOI), γ_{\parallel} embodies the temporal (or longitudinal) coherence properties relating to the monochromaticity of the wavefield and \parallel indicates the direction parallel to the wavefield propagation. The MOI described by the generalized Schell model³⁰ is given by,

$$J(\mathbf{r}_1, \mathbf{r}_2) = \psi_i(\mathbf{r}_1) \psi_i^*(\mathbf{r}_2) \gamma_{\perp}(\mathbf{r}_2 - \mathbf{r}_1), \quad (4)$$

where ψ_i is the illuminating wavefield and γ_{\perp} captures the coherence properties transverse (\perp) to the direction of wavefield propagation. The function $\gamma = \gamma_{\perp} \gamma_{\parallel}$ is the normalized mutual coherence function (MCF), which under the limit of full coherence is equal to unity everywhere. We note that the generality of equation 4 allows both planar and curved wavefronts, such as those found in Fresnel CDI³¹. The recorded partially coherent intensity is now given as a convolution^{11,24},

$$I_{pc}(\mathbf{q}) = I_c(\mathbf{q}) \otimes \hat{\gamma}(\mathbf{q}), \quad (5)$$

where $I_c(\mathbf{q})$ is the coherent intensity and $\hat{\gamma}(\mathbf{q})$ is the Fourier transform of the normalized MCF. For the case of a dynamic γ , as could be found from recording many shots from an identical sample with an XFEL, equation 5 would become,

$$\langle I_{pc}(\mathbf{q}) \rangle = I_c(\mathbf{q}) \otimes \langle \hat{\gamma}(\mathbf{q}) \rangle, \quad (6)$$

where $\langle I_{pc}(\mathbf{q}) \rangle$ is the accumulated intensity and $\langle \hat{\gamma}(\mathbf{q}) \rangle$ is the 'average' of the MCF at the detector (see Supplementary Methods for derivation). The effect of equation 5 is to blur the coherent intensity by convolving it with the Fourier transform of the normalized MCF^{11,24}. The partially coherent diffraction pattern is no longer the modulus of the diffracted wavefield, which results in there being no object that will simultaneously satisfy the modulus and support constraints^{24,32}. Depending on the degree of degradation,

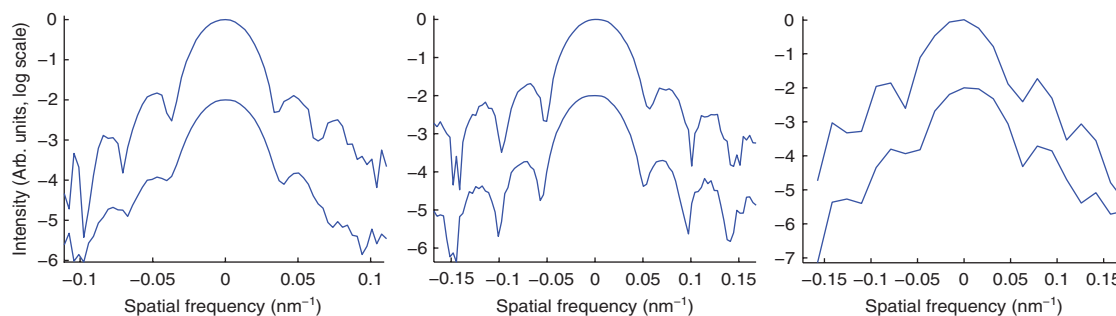


Figure 1 | Gold nanocrystal diffraction pattern lineouts. Line-outs through the centre of the diffraction pattern of a gold nanocrystal measured under two coherence conditions. The ‘high coherence’ (top line) and ‘low coherence’ (bottom line) data are displayed on the same plot. From left to right, $I_{pc}(q_1, 0, 0)$, $I_{pc}(0, q_2, 0)$ and $I_{pc}(0, 0, q_3)$. The lower line-out has been offset for clarity.

the iterative algorithms can produce reconstructions that contain artefacts, non-unique solutions or fail to converge at all^{5,11,26,29,32}. It is for these reasons that methods that can recover objects from their partially coherent diffraction patterns in three dimensions without a *a priori* assumptions about 3D form are required.

Description of experiment. To demonstrate simultaneous recovery of a sample and the normalized MCF of the illumination from 3D diffraction data, an experiment was carried out at beamline 34-ID-C at the Advanced Photon Source in Chicago (for further details, see Methods). The sample consisted of Au nanocrystals several hundred nanometres in diameter. Slits in the beamline were used to adjust the MCF. Data were recorded at two different slit settings, 12.5 and 50 μm , chosen to achieve the horizontally ‘coherent’ and ‘partially coherent’ illumination conditions, respectively. Figure 1 shows line-outs taken through the 3D recorded intensity. Degradation in fringe visibility is clearly visible in the horizontal detector direction (q_1), which in the geometry for this experiment is most affected by a change in horizontal coherence. Shown in Supplementary Fig. S1 is a comparison of the reconstructed data to that measured for the low-coherence data set.

Reconstruction procedure. In order to accommodate partial coherence the modulus constraint needs to be modified. Modification of the modulus constraint has proven successful in accommodating partial temporal^{28,29} and spatial²⁶ coherence using modal techniques. The modal methods assume that the recorded diffraction is made up of a number of modes, with the estimate at the recorded diffraction being the incoherent sum of each mode’s intensity. Other modifications of the modulus constraint have successfully been incorporated for dynamic sample imaging³³ and molecular damage from XFELs³⁴. Ten reconstructions were carried out for each of the slit settings, each starting with a random phase for the wavefield at the detector. All reconstructions used the same recipe which consisted of 10 iterations of error reduction⁹, then 160 iterations of hybrid input–output⁹ using $\beta=0.9$, and then 40 iterations of error reduction. The support was updated every fifth iteration using shrink wrap³⁵. For each of the random starts, two reconstructions were carried out; the first used the usual modulus constraint and the second used the modified modulus constraint given by equation 7 and equation 8. $\hat{\gamma}^k(\mathbf{q})$ was updated every 15 iterations using the iterative Richardson–Lucy (RL) algorithm (Methods). The reconstructions (including determination of the MCF) were performed in reciprocal space coordinate system after which each reconstruction was transformed to an orthogonal laboratory reference frame with x, y directions being transverse to the beam direction z (Supplementary Methods).

3D reconstructions of gold nanocrystals. Figure 2a–d shows a typical reconstructed image of the gold nanocrystal comparing the

amplitude (shown as an isosurface at 50% of the maximum) for the high- (a and b) and low-coherence (c and d) data sets assuming perfect coherence (a and c) and accommodating partial coherence (b and d). It is quite clear that, without correcting for the partial coherence, the reconstructed image suffers from significant unphysical density modulations, manifesting itself as a missing segment at the contour level shown (c). On the other hand, the reconstruction accommodating the partial coherence (d) represents the expected shape for a defect-free nanocrystal of uniform density. This is also in agreement with the high-coherence reconstruction (a and b). Also shown in Fig. 2e–h are transparent isosurfaces of the recovered amplitude. The clearly observable variations in density have been reported before^{2,5,11,12} with the high-density regions being labelled as ‘hot spots’. The hot spots were attributed to partial coherence effects owing to beamline window placement¹¹. The coherence-corrected images (f and h) show a much more uniform interior with a well-faceted crystal shape compared with those assuming full coherence (e and g). Shown in Fig. 3 are histograms of the reconstructed amplitude for points within the crystal. The low-coherence histogram (c) has a significantly broader distribution of values compared with the high-coherence (a) and corrected cases (b and d). A Gaussian was fitted to the histogram of the amplitude values. The standard deviation (s.d.) of the distribution improved by a factor of 2.7 and 3.9 for the high- and low-coherence reconstructions, respectively, after using the partially coherent modulus constraint. The phase of the reconstructed nanocrystal is almost unaffected, presumably because it is quite slow-varying. Shown in Supplementary Fig. S2 is the error metric, which quantifies the difference between the reconstructed estimate for the data and that measured. We see a reduction in the error metric of 14% using the partially coherent reconstruction method compared with assuming full coherence. Importantly, these results also show us that significant improvements can be made even to the high-coherence data by incorporating a partially coherent modulus constraint. We attribute this to the fact that the longitudinal coherence was the same for both data sets. The resolution in each direction of the final images was estimated by fitting a Gaussian function to the derivative of the edge of the reconstructed nanocrystal. The resolution (2σ) was 17, 8 and 14 nm for x, y and z directions, respectively. A second nanocrystal was also studied using a horizontally partially coherent illumination and found to show the same improvement. Figure 4 shows a comparison between the reconstructions assuming full coherence and accommodating the partial coherence, demonstrating a marked improvement when accommodating the partial coherence using the method outlined here. The improvements are found to be fully 3D, as can be seen in Supplementary Movie 1 and Supplementary Movie 2, which show the reconstruction assuming full coherence and accommodating the partial coherence, respectively.

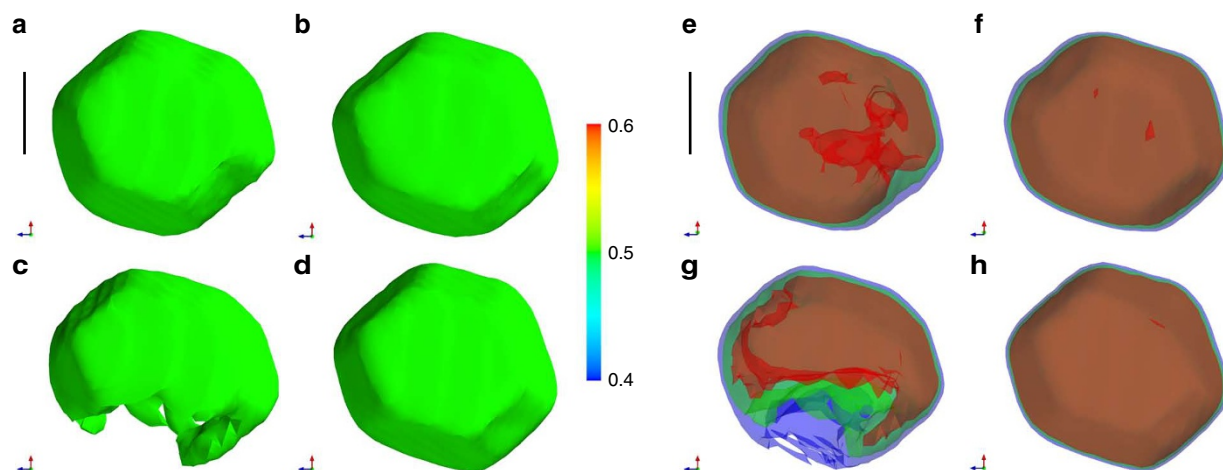


Figure 2 | Isosurfaces of the reconstructed nanocrystal for differing coherence conditions. (a–d) Opaque isosurfaces (50% of the maximum) of the reconstructed nanocrystal for differing coherence conditions. (a) Imaged under high-coherence conditions assuming full coherence and (b) using the partially coherent modulus constraint. Images from the low-coherence conditions assuming full coherence (c) and using the partially coherent modulus constraint (d). (e–h) Transparent isosurfaces (40–60% of the maximum) of the reconstructed nanocrystal for differing coherence conditions. (e) Imaged under high-coherence conditions assuming full coherence and (f) using the partially coherent modulus constraint. Images from the low-coherence conditions assuming full coherence (g) and using the partially coherent modulus constraint (h). The viewing plane is z - x (blue and red arrows, respectively) and the black scale bar represents 100 nm.

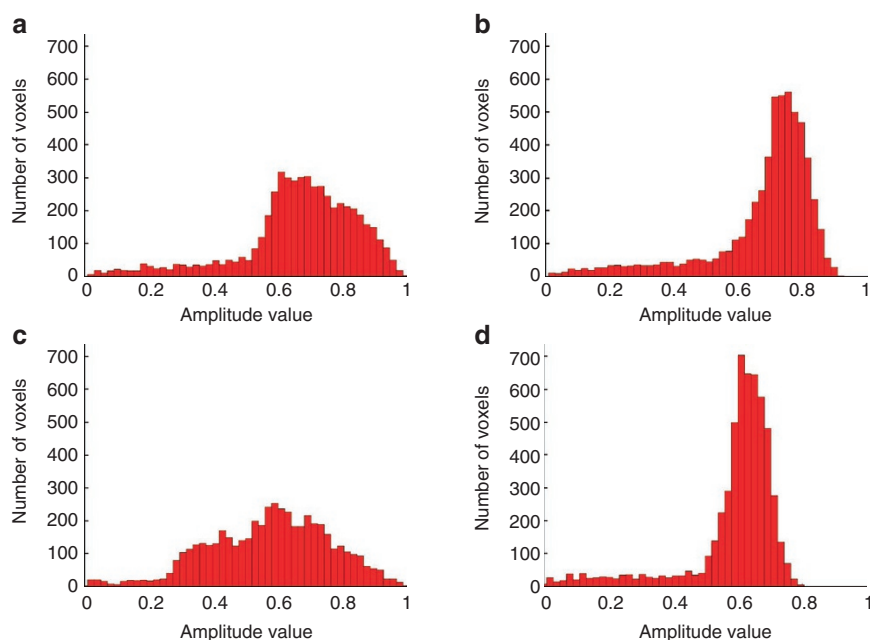


Figure 3 | Histograms of amplitude values of pixels within the crystal. The high-coherence conditions assuming full coherence (a) and using the partially coherent modulus constraint (b). The histograms for the low-coherence reconstructions assuming full coherence (c) and using the partially coherent modulus constraint (d).

The full 3D normalized MCF is also recovered. Line-outs, averaged from 10 random starts, for the horizontal (x) and longitudinal (z) normalized MCF are shown in Fig. 5 along with a 2D x - z slice for the low-coherence data set. The horizontal coherence length, which can be read off as a characteristic width of these distributions, is 220 nm (defined as the half-width at half maximum (HWHM) of $|\gamma|$). This compares well with the value range of 200–300 nm estimated from the beamline geometry (Supplementary Methods). The recovered longitudinal HWHM is 485 nm (extrapolated from fitting a Gaussian), which compares well with a previously measured¹² HWHM

of 660 nm for the same beamline. It is also seen that the HWHM of the horizontal coherence function increases by $\sim 60\%$ from the low- (blue line) to the high-coherence (red line) data set (Fig. 5a). There is excellent agreement between the recovered longitudinal normalized MCF from the low- (red line) and high-coherence (blue line) data sets (Fig. 5b). We note that no *a priori* form or model was assumed in this analysis. The source size and beamline optics will largely predict the coherence properties of the illumination. Our result shows that we can obtain an estimate of the coherence properties of the wavefield while simultaneously reconstructing an image of the sample.

Discussion

Our coherence-correcting method, demonstrated here, has broad implications for CDI as it allows objects to be reconstructed to high resolution in three dimensions when their diffraction patterns have been recorded under less than ideal spatial and/or temporal coherence. This will enable a wider range of samples from all areas of science, including both materials and biological samples, to be imaged as previous limitations on the coherence of the source have been significantly reduced. The method is simple and intuitive, and it is anticipated that it will be adopted widely in the many guises of CDI including high-resolution imaging using synchrotron, XFEL, electron and lab-based X-ray sources of isolated and extended objects (using ptychography) in two and three dimensions.

Our coherence-correcting method has the additional benefit of recovering the full 3D coherence properties of the illumination without the need for *a priori* information. Because of the non-orthogonal coordinate transformation in the Bragg geometry, of which full details are provided in the Supplementary Methods, the transverse and longitudinal directions of the coherence do not align with the simple viewing directions, so a full determination of these requires a full 3D deconvolution. Wavefront propagation

methods are seriously compromised by the effects of partial coherence. Knowledge of the full 3D coherence properties of a beam is therefore particularly useful for the characterization of wavefields. This methodology can then be used to assess the quality of beamline optics for synchrotron and XFEL sources. We note this has not been achieved by any other method before to this level of detail.

Methods

Sample preparation. To make the nanocrystals, a 2 nm layer of Ti was deposited using thermal evaporation onto an Si wafer followed by 20 nm of Au. The thin film was then annealed in air at 1,000 °C for ~10 h after which time the film had dewetted and formed nanocrystals.

Experiment. The sample was placed on a diffractometer and illuminated by 8.9 keV X-rays. To record the diffraction from the nanocrystals, a 1350×1300 pixel charge-coupled device with 20 μm² pixels was placed 550 mm from the crystal centred about one of the (111) Bragg peaks. A set of Kirkpatrick–Baez mirrors with focal lengths of 100 and 200 mm in the horizontal and vertical directions, respectively, were used to focus the illumination onto the sample. Approximately 600 mm in front of the sample, roller blade slits were used to aperture the X-ray wavefield in the horizontal direction. Opening and closing the roller blade slits allowed adjustment of the MOI incident on the Kirkpatrick–Baez mirrors. To record the 3D diffraction pattern, the nanocrystals were rocked in 50 0.02° steps with each frame exposed for a total of 16 seconds.

Phase retrieval algorithm. In order to accommodate partial coherence and simultaneously determine the coherence function, the following algorithm was employed.

At iteration k , propagate $\psi^k(r)$ to the detector plane to obtain $\hat{\psi}^k(q)$. Update the estimate of $\hat{\gamma}^k(q)$ and then form the current estimate of the measured partially coherent data $I_{pc}^k(q)$ using:

$$I_{pc}^k(q) = I^k(q) \otimes \hat{\gamma}^k(q), \quad (7)$$

where $I^k(q) = |\hat{\psi}^k(q)|^2$. Apply the modulus constraint to $\hat{\psi}^k(q)$, using the measured data $I_{pc}^k(q)$ via:

$$\hat{\psi}^{k'}(q) = \hat{\psi}^k(q) \left(\frac{\sqrt{I_{pc}^k(q)}}{\sqrt{I^k(q)}} \right). \quad (8)$$

After the modulus constraint, $\hat{\psi}^{k'}(q)$ is propagated to the sample plane. Once in the sample plane real space constraints are enforced, forming the next iterate. The above steps constitutes a single iteration, with the algorithm being run for a prescribed number of iterations.

The iterative RL algorithm^{36,37} was employed to update a numerical estimate of $\hat{\gamma}^k(q)$ using the measured intensity, $I_{pc}(q)$, and a combination of the current and previous iterates estimate of the coherent intensity, $I^{\Delta k}(q) = 2I^k(q) - I^{k-1}(q)$. The iterative scheme for $\hat{\gamma}^k(q)$ is given by,

$$\hat{\gamma}^{k,i+1}(q) = \hat{\gamma}^{k,i}(q) \left(I^{\Delta k}(-q) \otimes \frac{I_{pc}(q)}{I^{\Delta k}(q) \otimes \hat{\gamma}^{k,i}(q)} \right), \quad (9)$$

where i is the sub iteration number relating to the coherence function determination. In the limit of full coherence, $\gamma \rightarrow \delta$ (where δ is the Dirac delta function) and equation 8 becomes the usual modulus constraint that sets the amplitude of the iterate to square root of the measured intensity while retaining the phase.

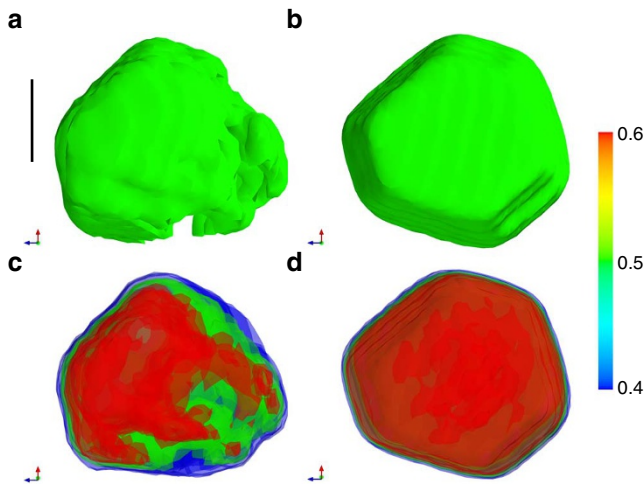


Figure 4 | Isosurfaces of a second reconstructed nanocrystal taken with partially coherent illumination. (a) Shown is an opaque isosurface (50% of the maximum) assuming full coherence, which is compared with the reconstruction using the partially coherent modulus constraint shown in (b). Transparent isosurfaces (40–60% of the maximum) of the second reconstructed nanocrystal assuming full coherence (c) and using the partially coherent modulus constraint (d). The viewing plane is x - z (blue and red arrows, respectively) and the black scale bar represents 100 nm.

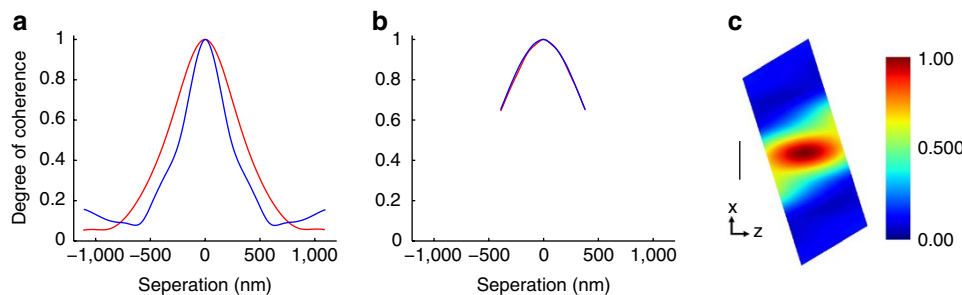


Figure 5 | Line-outs through the centre of the recovered coherence function in the plane of the sample. Shown is the recovered coherence function for the x (a) and z (b) directions for the high- (red line) and low-coherence (blue) data sets. Also shown (c) is an x - z slice through the recovered coherence function for the low-coherence data set. The black scale bar represents 500 nm.

The coherence function was updated every 15 iterations with the RL algorithm run for 25 iterations per update. Increasing the number of iterations had minimal effect on the final result. Twenty-five was found to be adequate to converge to a solution while reducing computation time.

The unambiguous separation of a reconstructed object and a MCF, as we demonstrate here, may appear to be an over interpretation of a single set of measurements. We note that the Fourier transform of the object and the MCF affect different general features of the diffraction pattern: the former determines the fringe spacings and their relative positions, while the latter affects their visibility or contrast. As with all deconvolution problems, it is expected that there will be a limited range of applicability of our method to the level of partial coherence that can be corrected. This limit has not been fully established but is likely to be when the normalized MCF reaches zero across $\int \rho(r) \rho^*(r+x) dr$, indicating that the normalized MCF must be non-zero across a width twice the size of the object. Furthermore, we note that a relatively tight (reciprocal space) point-spread function has vastly fewer degrees of freedom than the full diffraction pattern. By using the RL algorithm, which seeks a solution that maximizes the entropy rather than a least squares solution, we avoid the situation where $\|I_{pc}(q) - I^k(q) \otimes \hat{\gamma}^k(q)\| = 0$ when $I^k \neq I_c$ which would occur if $\hat{\gamma}^k(q) = \mathcal{F}^{-1}[(\mathcal{F}^{-1}[I_{pc}(q)])(\mathcal{F}^{-1}[I^k(q)])]$, where \mathcal{F} is the Fourier transform operator. This situation is further avoided by determining $\hat{\gamma}^k$ from an intensity that is not equivalent to I^k unless the solution has been reached. This can be seen that $I^{\Delta k} \neq I^k$ unless $I^k = I^{k-1}$. This method is generally robust to noise as the majority of the power in the diffraction patterns are contained within the first few diffraction peaks, where the signal to noise ratio is highest.

References

- Miao, J., Charalambous, P., Kirz, J. & Sayre, D. Extending the methodology of x-ray crystallography to allow imaging of micrometre-sized non-crystalline specimens. *Nature* **400**, 342–344 (1999).
- Robinson, I. K., Vartanyants, I. A., Williams, G. J., Pfeifer, M. A. & Pitney, J. A. Reconstruction of the shapes of gold nanocrystals using coherent X-ray diffraction. *Phys. Rev. Lett.* **87**, 195505 (2001).
- Shapiro, D. *et al.* Biological imaging by soft X-ray diffraction microscopy. *Proc. Natl Acad. Sci. USA* **102**, 15343–15346 (2005).
- Zuo, J. M., Vartanyants, I., Gao, M., Zhang, R. & Nagahara, L. A. Atomic resolution imaging of a carbon nanotube from diffraction intensities. *Science* **300**, 1419–1421 (2003).
- Williams, G. J., Pfeifer, M. A., Vartanyants, I. A. & Robinson, I. K. Three-dimensional imaging of microstructure in Au nanocrystals. *Phys. Rev. Lett.* **90**, 175501 (2003).
- Chapman, H. N. *et al.* High-resolution *ab initio* three-dimensional X-ray diffraction microscopy. *J. Opt. Soc. Am. A* **23**, 1179–1200 (2006).
- Chapman, H. N. *et al.* Femtosecond time-delay X-ray holography. *Nature* **448**, 676–679 (2007).
- Barty, A. *et al.* Ultrafast single-shot diffraction imaging of nanoscale dynamics. *Nat. Photon* **2**, 415–419 (2008).
- Fienup, J. R. Phase retrieval algorithms—a comparison. *Appl. Opt.* **21**, 2758–2769 (1982).
- Eisebitt, S. *et al.* Lensless imaging of magnetic nanostructures by X-ray spectro-holography. *Nature* **432**, 885–888 (2004).
- Vartanyants, I. & Robinson, I. Partial coherence effects on the imaging of small crystals using coherent X-ray diffraction. *J. Phys.* **13**, 10593–10611 (2001).
- Leake, S. J., Newton, M. C., Harder, R. & Robinson, I. K. Longitudinal coherence function in X-ray imaging of crystals. *Opt. Express* **17**, 15853–15859 (2009).
- Pfeifer, M. A., Williams, G. J., Vartanyants, I. A., Harder, R. & Robinson, I. K. Three-dimensional mapping of a deformation field inside a nanocrystal. *Nature* **442**, 63–66 (2006).
- Robinson, I. & Harder, R. Coherent X-ray diffraction imaging of strain at the nanoscale. *Nat. Mater.* **8**, 291–298 (2009).
- Vartanyants, I. A. *et al.* Coherence properties of individual femtosecond pulses of an X-ray free-electron laser. *Phys. Rev. Lett.* **107**, 144801 (2011).
- Huang, W. J., Zuo, J. M., Jiang, B., Kwon, K. W. & Shim, M. Sub-angstrom-resolution diffractive imaging of single nanocrystals. *Nat. Phys.* **5**, 129–133 (2009).
- De Caro, L., Carlino, E., Caputo, G., Cozzoli, P. D. & Giannini, C. Electron diffractive imaging of oxygen atoms in nanocrystals at sub-angstrom resolution. *Nat. Nano* **5**, 360–365 (2010).
- McCulloch, A. J. *et al.* Arbitrarily shaped high-coherence electron bunches from cold atoms. *Nat. Phys.* **7**, 785–788 (2011).
- Godard, P. *et al.* Three-dimensional high-resolution quantitative microscopy of extended crystals. *Nat. Commun.* **2**, 568 (2011).
- Dierolf, M. *et al.* Ptychographic X-ray computed tomography at the nanoscale. *Nature* **467**, 436–439 (2010).
- Kneip, S. *et al.* Bright spatially coherent synchrotron X-rays from a table-top source. *Nat. Phys.* **6**, 980–983 (2010).
- Kewish, C. M. *et al.* Reconstruction of an astigmatic hard X-ray beam and alignment of k-b mirrors from ptychographic coherent diffraction data. *Opt. Express* **18**, 23420–23427 (2010).
- Abbey, B. *et al.* Keyhole coherent diffractive imaging. *Nat. Phys.* **4**, 394–398 (2008).
- Nugent, K. A. Coherent methods in the X-ray sciences. *Adv. Phys.* **59**, 1–99 (2010).
- Vartanyants, I. A. & Singer, A. Coherence properties of hard X-ray synchrotron sources and X-ray free-electron lasers. *New J. Phys.* **12**, 035004 (2010).
- Whitehead, L. W. *et al.* Diffractive imaging using partially coherent X rays. *Phys. Rev. Lett.* **103**, 243902 (2009).
- Clark, J. N. & Peele, A. G. Simultaneous sample and spatial coherence characterisation using diffractive imaging. *Appl. Phys. Lett.* **99**, 154103 (2011).
- Chen, B. *et al.* Multiple wavelength diffractive imaging. *Phys. Rev. A* **79**, 023809 (2009).
- Abbey, B. *et al.* Lensless imaging using broadband X-ray sources. *Nat. Photon.* **5**, 420–424 (2011).
- Schell, A. C. A technique for determination of radiation pattern of a partially coherent aperture. *IEEE Trans. Antennas Propagation* **Ap15**, 187 (1967).
- Williams, G. J. *et al.* Fresnel coherent diffractive imaging. *Phys. Rev. Lett.* **97**, 025506 (2006).
- Williams, G. J., Quiney, H. M., Peele, A. G. & Nugent, K. A. Coherent diffractive imaging and partial coherence. *Phys. Rev. B* **75**, 104102 (2007).
- Clark, J. N. *et al.* Dynamic sample imaging in coherent diffractive imaging. *Opt. Lett.* **36**, 1954–1956 (2011).
- Quiney, H. M. & Nugent, K. A. Biomolecular imaging and electronic damage using X-ray free-electron lasers. *Nat. Phys.* **7**, 142–146 (2011).
- Marchesini, S. *et al.* X-ray image reconstruction from a diffraction pattern alone. *Phys. Rev. B* **68**, 140101 (2003).
- Richardson, W. Bayesian-based iterative method of image restoration. *J. Opt. Soc. Am.* **62**, 55–59 (1972).
- Lucy, L. Iterative technique for rectification of observed distributions. *Astron. J.* **79**, 745–754 (1974).

Acknowledgements

This work was supported by FP7 advanced grant from the European Research Council. The experimental work was carried out at Advanced Photon Source Beamline 34-ID-C, built with funds from the US National Science Foundation under Grant DMR-9724294 and operated by the US Department of Energy, Office of Science, Office of Basic Energy Sciences, under Contract DE-AC02-06CH11357.

Author contributions

J.N.C. and I.K.R. planned the experiments. Experimental data were gathered by J.N.C., X.H., R.H. and I.K.R. Data analysis was carried out by J.N.C. All authors contributed to the writing of the manuscript.

Additional information

Supplementary Information accompanies this paper at <http://www.nature.com/naturecommunications>

Competing financial interests: The authors declare no competing financial interests.

Reprints and permission information is available online at <http://npg.nature.com/reprintsandpermissions/>

How to cite this article: Clark, J.N. *et al.* High-resolution three-dimensional partially coherent diffraction imaging. *Nat. Commun.* 3:993 doi: 10.1038/ncomms1994 (2012).