

Erratum: Comparative genomics reveals adaptive evolution of Asian tapeworm in switching to a new intermediate host

Shuai Wang, Sen Wang, Yingfeng Luo, Lihua Xiao, Xuenong Luo, Shenghan Gao, Yongxi Dou, Huangkai Zhang, Aijiang Guo, Qingshu Meng, Junling Hou, Bing Zhang, Shaohua Zhang, Meng Yang, Xuelian Meng, Hailiang Mei, Hui Li, Zilong He, Xueliang Zhu, Xinyu Tan, Xing-quan Zhu, Jun Yu, Jianping Cai, Guan Zhu, Songnian Hu & Xuepeng Cai

Nature Communications 7:12485 doi: 10.1038/ncomms12845 (2016); Published 22 Sep 2016; Updated 3 Nov 2016

This Article contains errors in Fig. 3. In panel b, the axes are displaced relative to the data, and in panel c, the label 'Species-specific GD' in red should read 'Species-specific GD (tandem)'. The correct version of Fig. 3 appears below as Fig. 1.

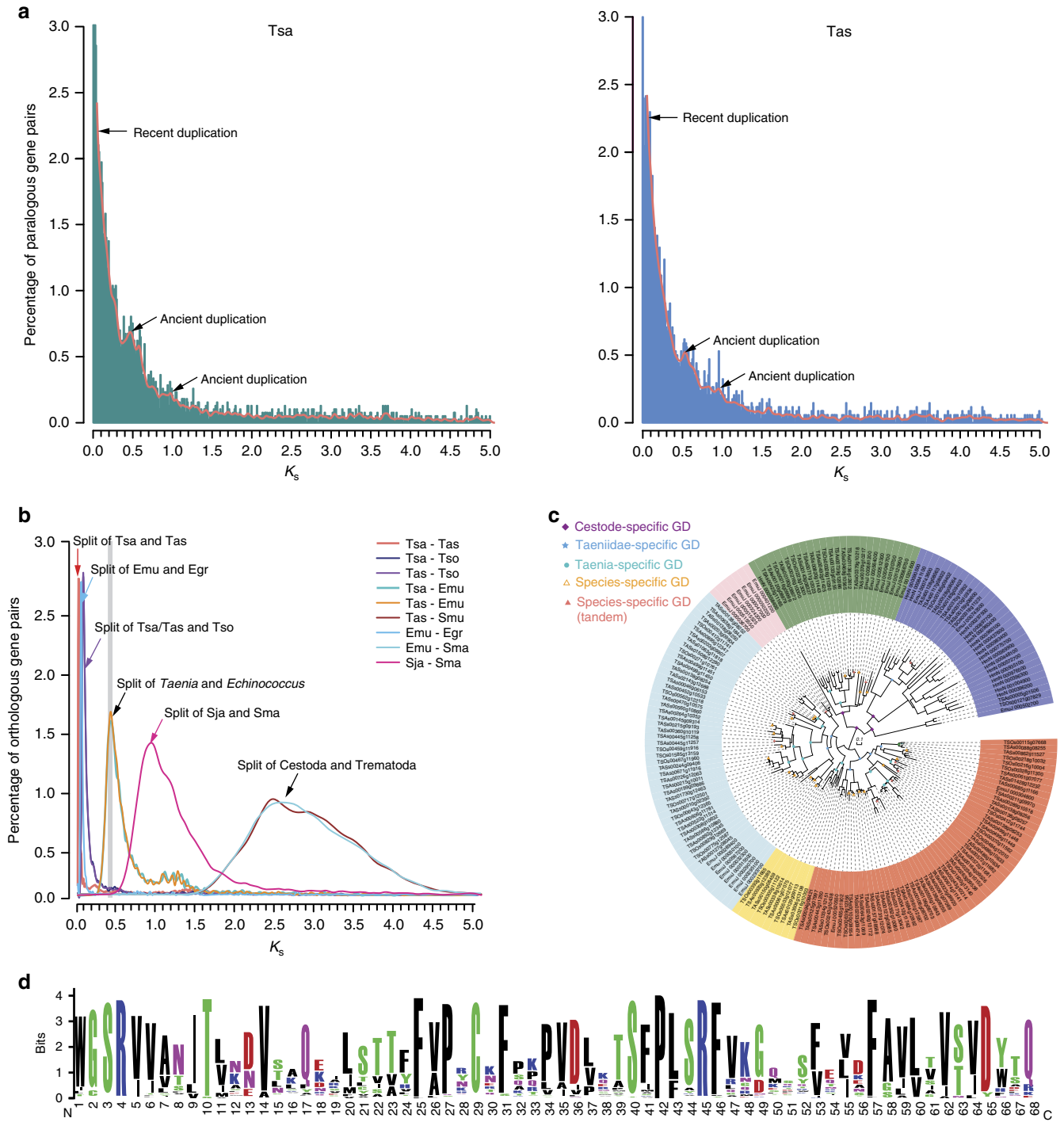


Figure 1

This work is licensed under a Creative Commons Attribution 4.0 International License. The images or other third party material in this article are included in the article's Creative Commons license, unless indicated otherwise in the credit line; if the material is not included under the Creative Commons license, users will need to obtain permission from the license holder to reproduce the material. To view a copy of this license, visit <http://creativecommons.org/licenses/by/4.0/>

© The Author(s) 2016