

# Corrigendum: TRIP13 promotes error-prone nonhomologous end joining and induces chemoresistance in head and neck cancer

Rajat Banerjee, Nickole Russo, Min Liu, Venkatesha Basrur, Emily Bellile, Nallasivam Palanisamy, Christina S. Scanlon, Elizabeth van Tubergen, Ronald C. Inglehart, Tarek Metwally, Ram-Shankar Mani, Anastasia Yocum, Mukesh K. Nyati, Rogerio M. Castilho, Sooryanarayana Varambally, Arul M. Chinnaiyan & Nisha J. D'Silva

*Nature Communications* 5:4527 doi: 10.1038/ncomms5527 (2014); Published 31 Jul 2014; Updated 24 Feb 2016

In Fig. 4e,f of this Article, the plotted tumour volumes are incorrect due to an error in the formula used to convert length and width measurements into volume. The formula used was  $((\text{length} \times \text{width})^2)^{(22/7)} \times (1/6)$ , and this should have read  $(\text{length} \times (\text{width}^2))^{(22/7)} \times (1/6)$ . The resulting smaller tumour volumes do not change the original conclusions. The correct version of Fig. 4 appears below.

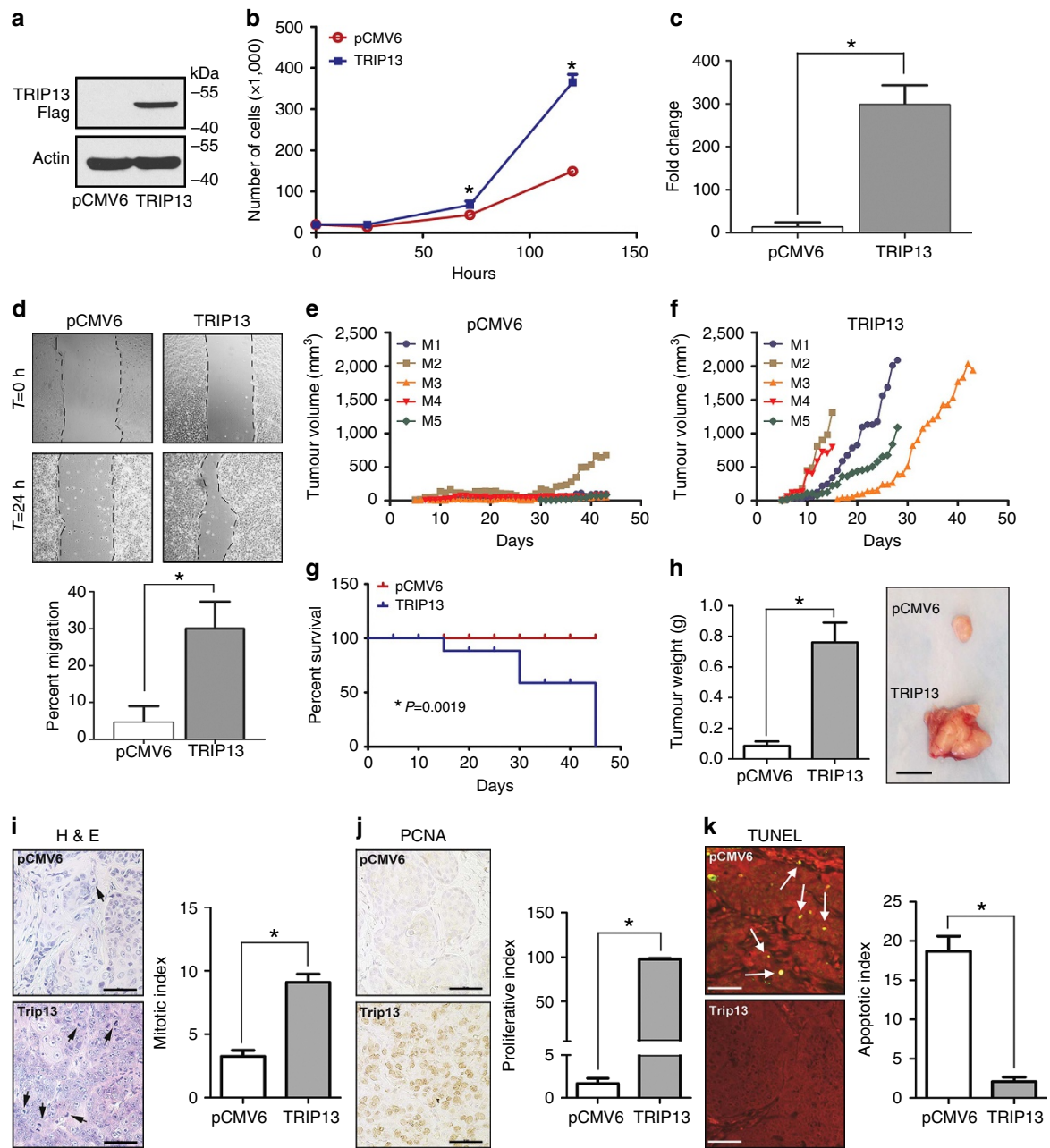


Figure 4