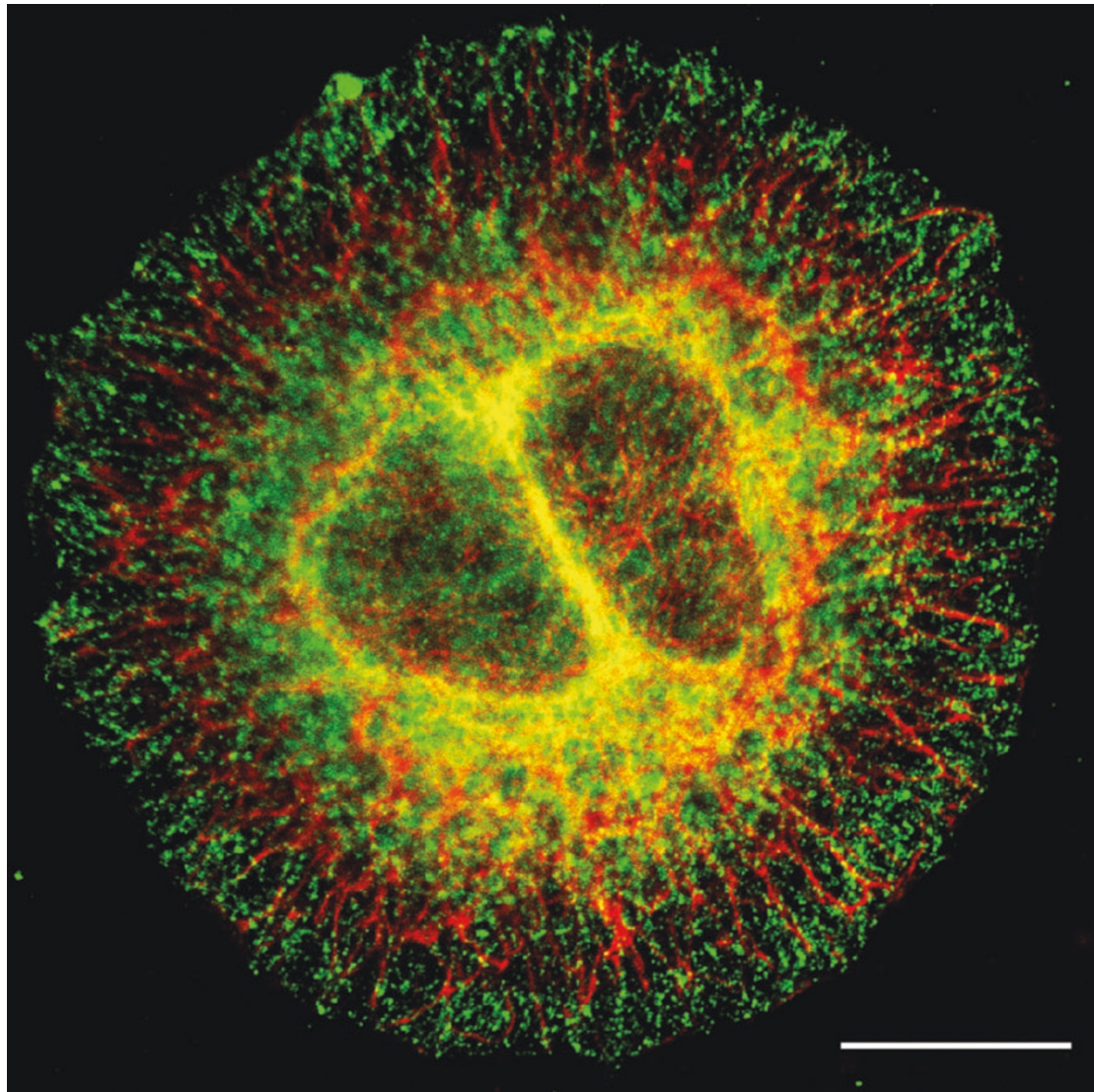


Transformed human epithelial cells

José Moreira, The Danish Cancer Society, Copenhagen, Denmark, jom@cancer.dk



Fixed, transformed epithelial amnion cells were immunostained using antibodies against a protein of the 14-3-3 family (14-3-3 σ ; green) and keratin filaments (red). The image was obtained using a laser-scanning microscope (Zeiss LSM 510). Bar, 20 μ m.

The winner would like to acknowledge the Danish Cancer Society for funding this work.