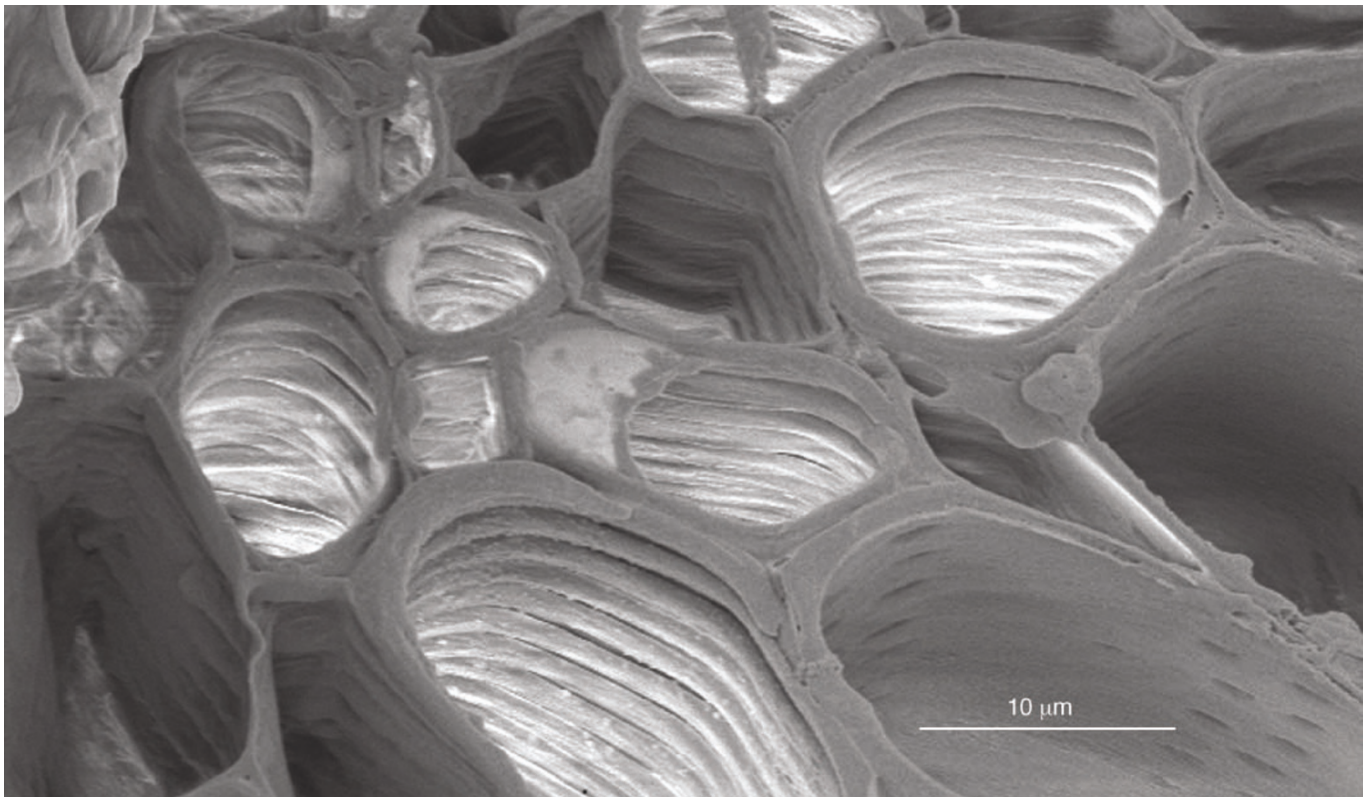


---

## Spark of Life: inside functional corps

Preeti Dahiya, John Innes Centre, UK, [preeti.dahiya@bbsrc.ac.uk](mailto:preeti.dahiya@bbsrc.ac.uk)



Xylem vessels from *Arabidopsis thaliana* floral stems. The image was obtained with a scanning electron microscope (XL30 FEG; Phillips).

Advisors: Ariel Ruiz i Altaba (Developmental Genetics Program, New York Medical Center) and Lelio Orci (Department of Morphology, University Medical Center, Geneva).