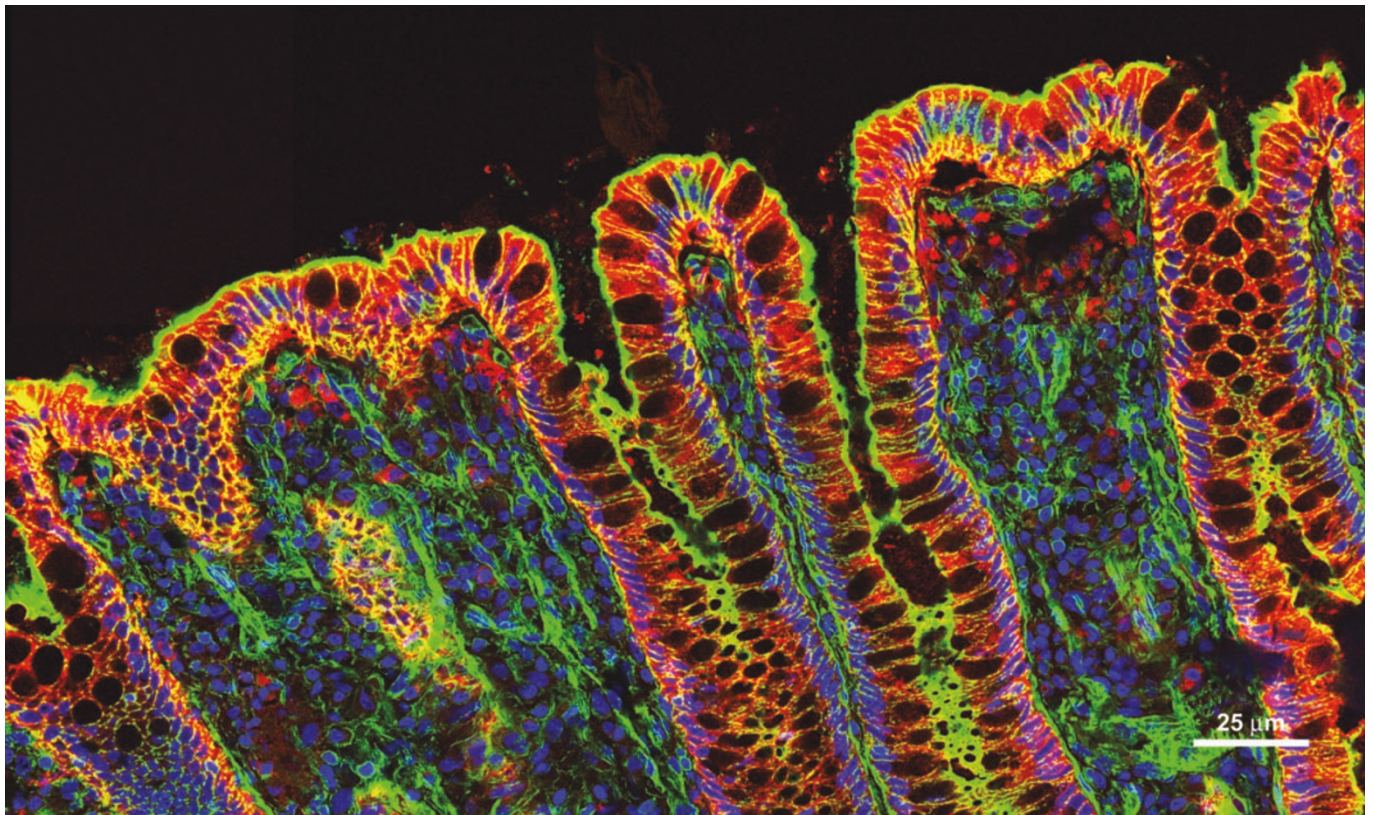


Unravelling the secrets of the crypts

Cécile Chalouni, Ludwig Cancer Research Institute, Yale University School of Medicine, USA,
cecile.chalouni@yale.edu



A frozen human colon tissue section was stained for actin (green) and the epithelial marker A33 (red). Nuclei were stained blue. The image was obtained using a Zeiss LSM 510 confocal microscope (x40 objective).

The winner would like to thank Derek Toomre and Ira Mellman (both at the Ludwig Cancer Research Institute, Yale University School of Medicine, USA) for support and advice.