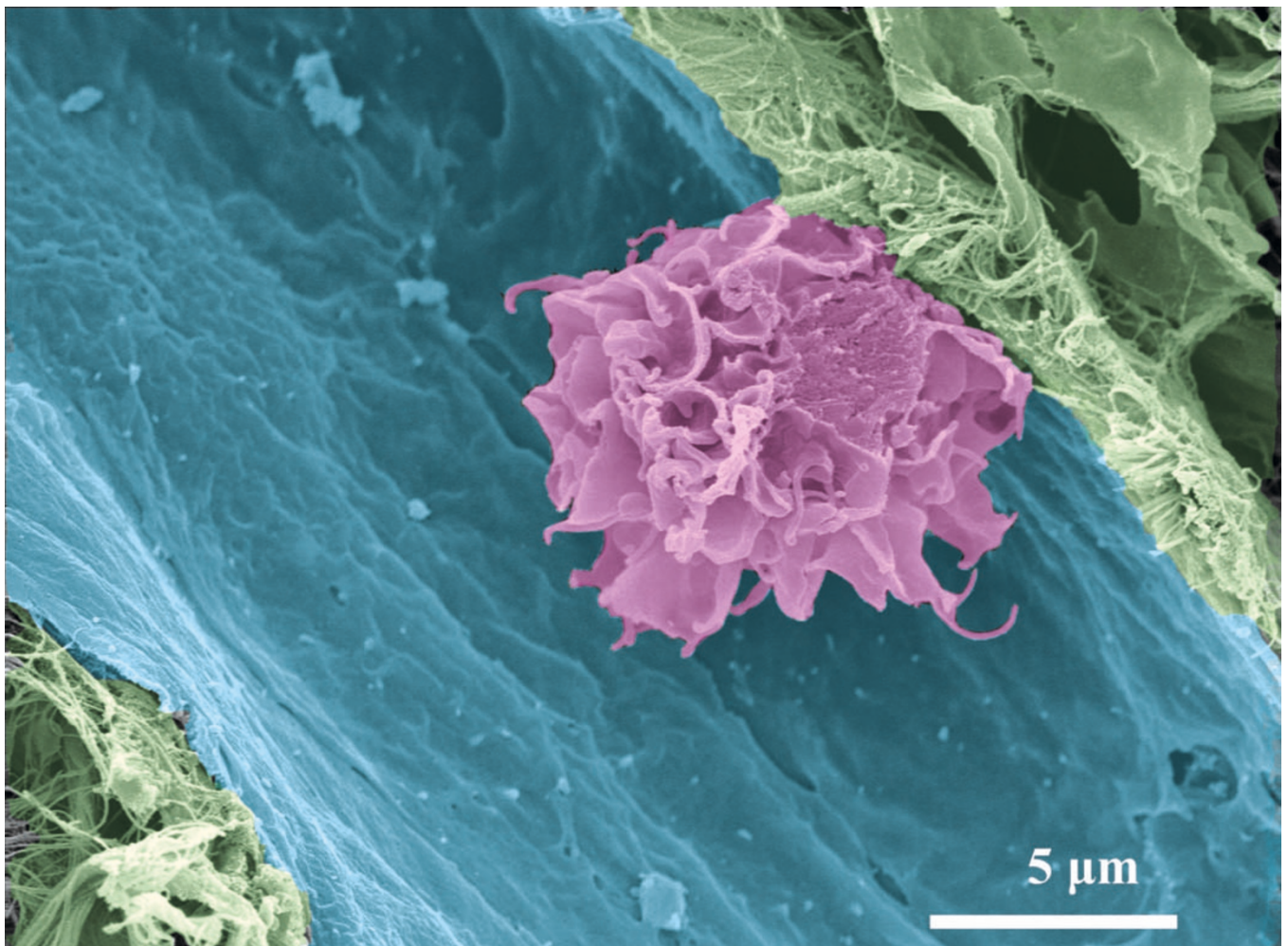


Human Langerhans cell in a dermal lymphatic vessel

Kristian Pfaller, Department of Histology and Molecular Cell Biology, University of Innsbruck, Austria,
kristian.pfaller@uibk.ac.at



Purple and blue pseudo-colouring represent the dendritic cell and the lymphatic vessel, respectively. The specimen was obtained using a field emission scanning electron microscope (DSM 982 Gemini, Zeiss). Scale bar represents 5 μm .

The winner would like to acknowledge the help of Lukas A. Huber and Patrizia Stoitzner, Department of Histology and Molecular Cell Biology, University of Innsbruck, Austria.

Advisors: Ariel Ruiz i Altaba (Developmental Genetics Program, New York Medical Center) and Lelio Orci (Department of Morphology, University Medical Center, Geneva).