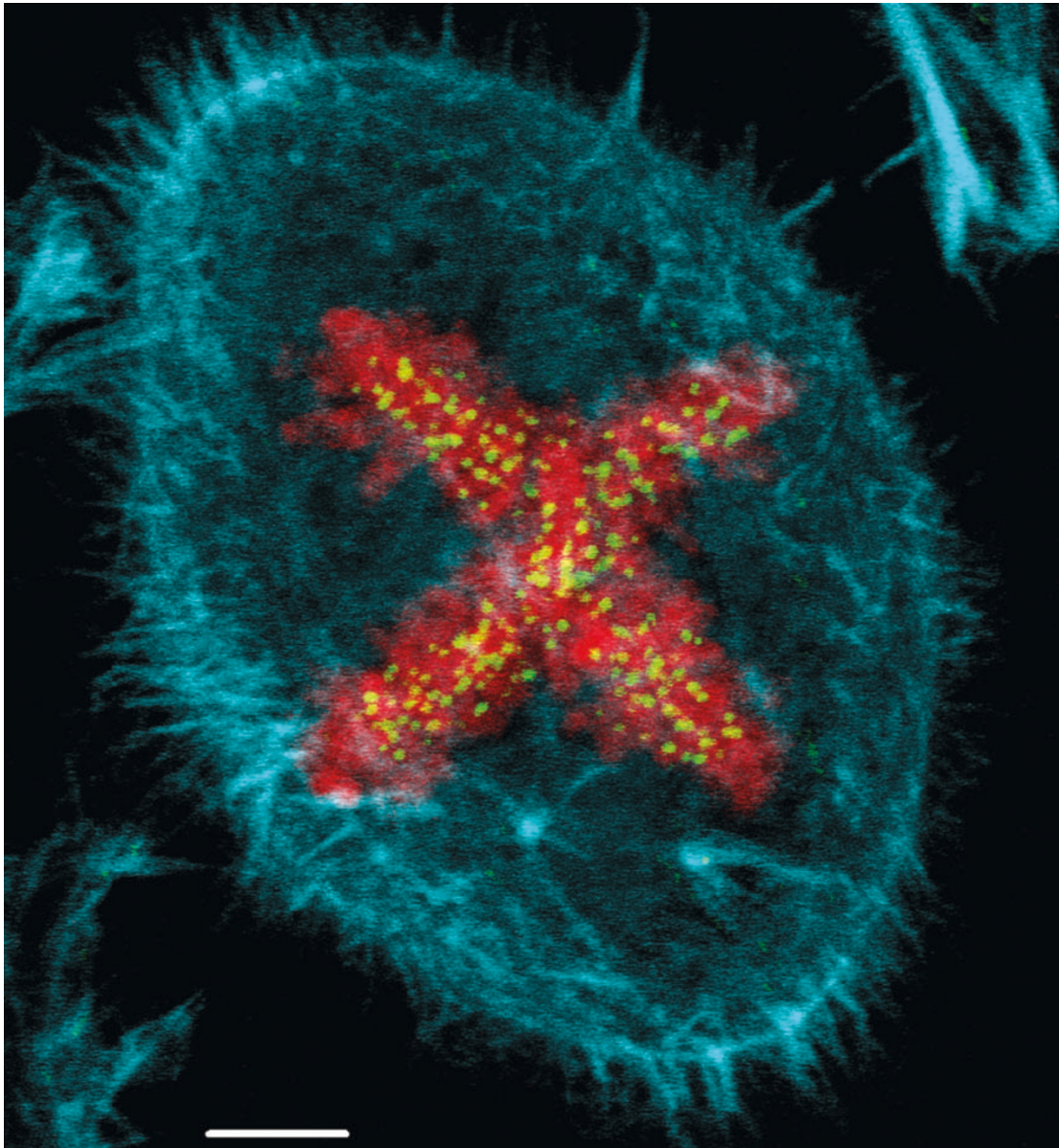


X marks the spot

Matthew Daniels, Hutchison/Medical Research Council (MRC) Research Centre, Cambridge, UK,
mjd46@hermes.cam.ac.uk



When two metaphase plates occur in a single cell, they become orientated perpendicularly to each other, seen here in the shape of an 'X'. The image shows a three-dimensional reconstruction of a HeLa cell that was stained for actin (blue), kinetochores (green) and DNA (red). The image was obtained using a laser scanning microscope (Zeiss LSM 510 META), and was rendered using Zeiss LSM Image Browser Software. Scale bar represents 5 μm .

The winner would like to acknowledge the University of Cambridge MB/PhD programme and the MRC for funding this work.