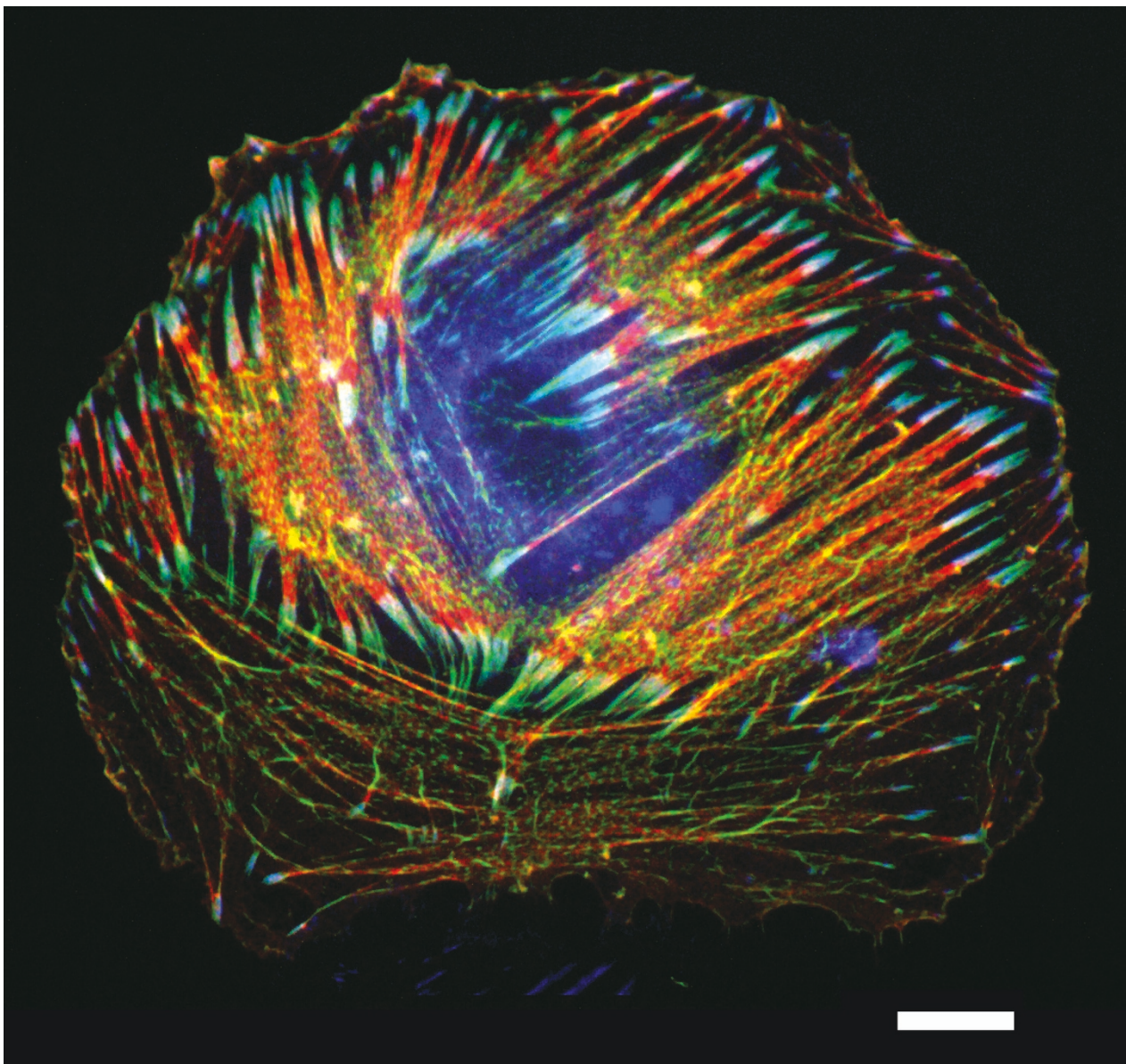


## The vascular smooth muscle cell cytoskeleton

Mario Gimona, Austrian Academy of Sciences, [mgimona@imb.oeaw.ac.at](mailto:mgimona@imb.oeaw.ac.at)



Rat smooth muscle cell that has been transfected with green fluorescent protein (GFP)-tagged  $\alpha$ -actinin (green) and stained for filamentous actin and vinculin. The actin cytoskeleton was stained with Alexa-568-conjugated phalloidin (red) and vinculin immunostaining is shown in blue. The image was acquired using a fluorescence microscope (Axioskop, Zeiss). Scale bar represents 20  $\mu\text{m}$ .

Advisors: Ariel Ruiz i Altaba (Developmental Genetics Program, New York Medical Center) and Lelio Orci (Department of Morphology, University Medical Center, Geneva).