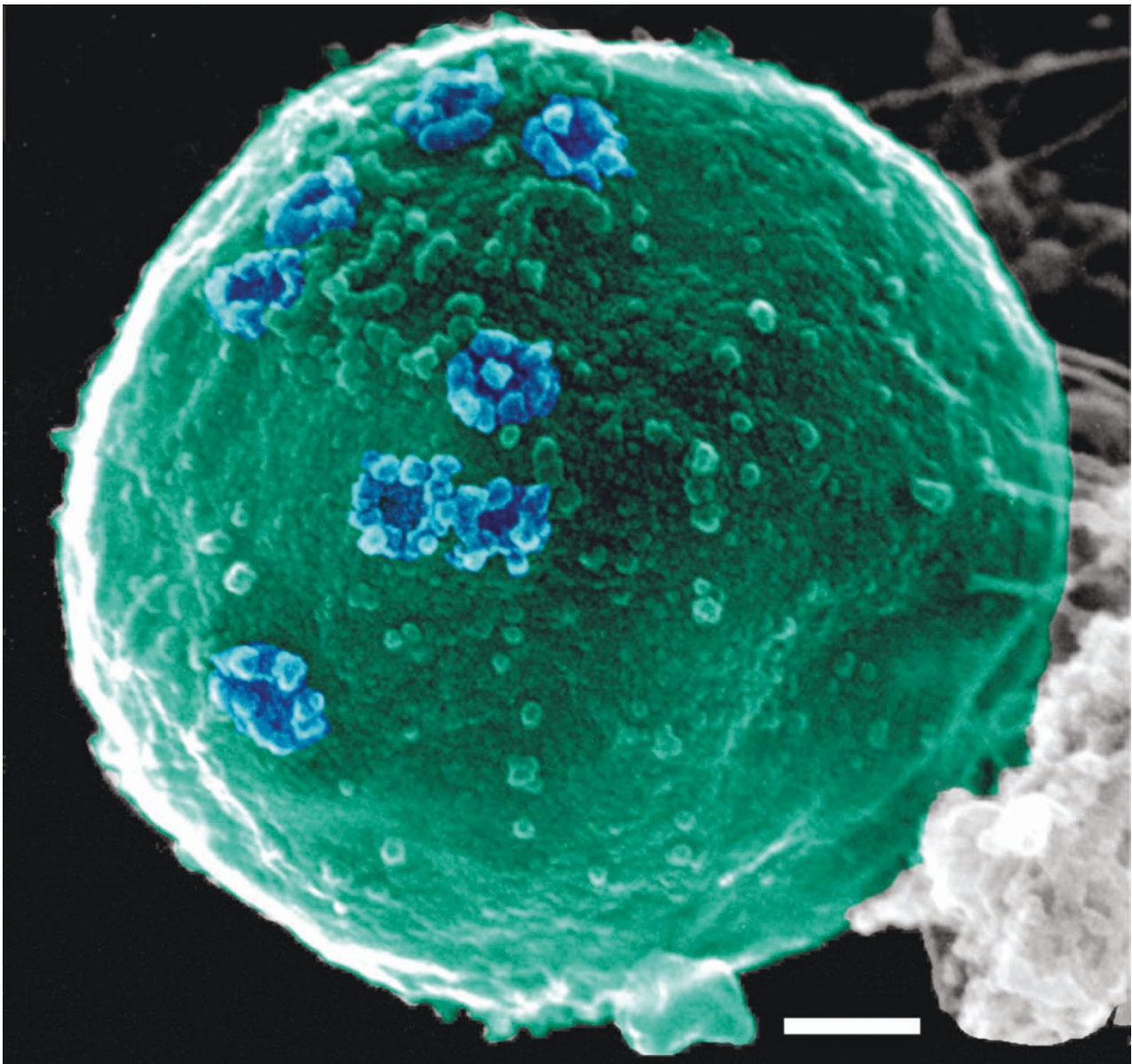


## Nuclear pore complexes in yeast

Elena Kiseleva, Institute of Cytology and Genetics, Novosibirsk, Russia, [elka@bionet.nsc.ru](mailto:elka@bionet.nsc.ru)



Blue pseudo-colouring highlights the nuclear pore complexes; green pseudo-colouring highlights the nuclear envelope together with the attached ribosomes. The image was obtained using a field emission scanning electron microscope (DS 130F, Topcon). Scale bar represents 100 nm.

The winner would like to acknowledge the help of Martin W. Goldberg (University of Durham, UK) and Terry D. Allen (Paterson Institute for Cancer Research, UK).