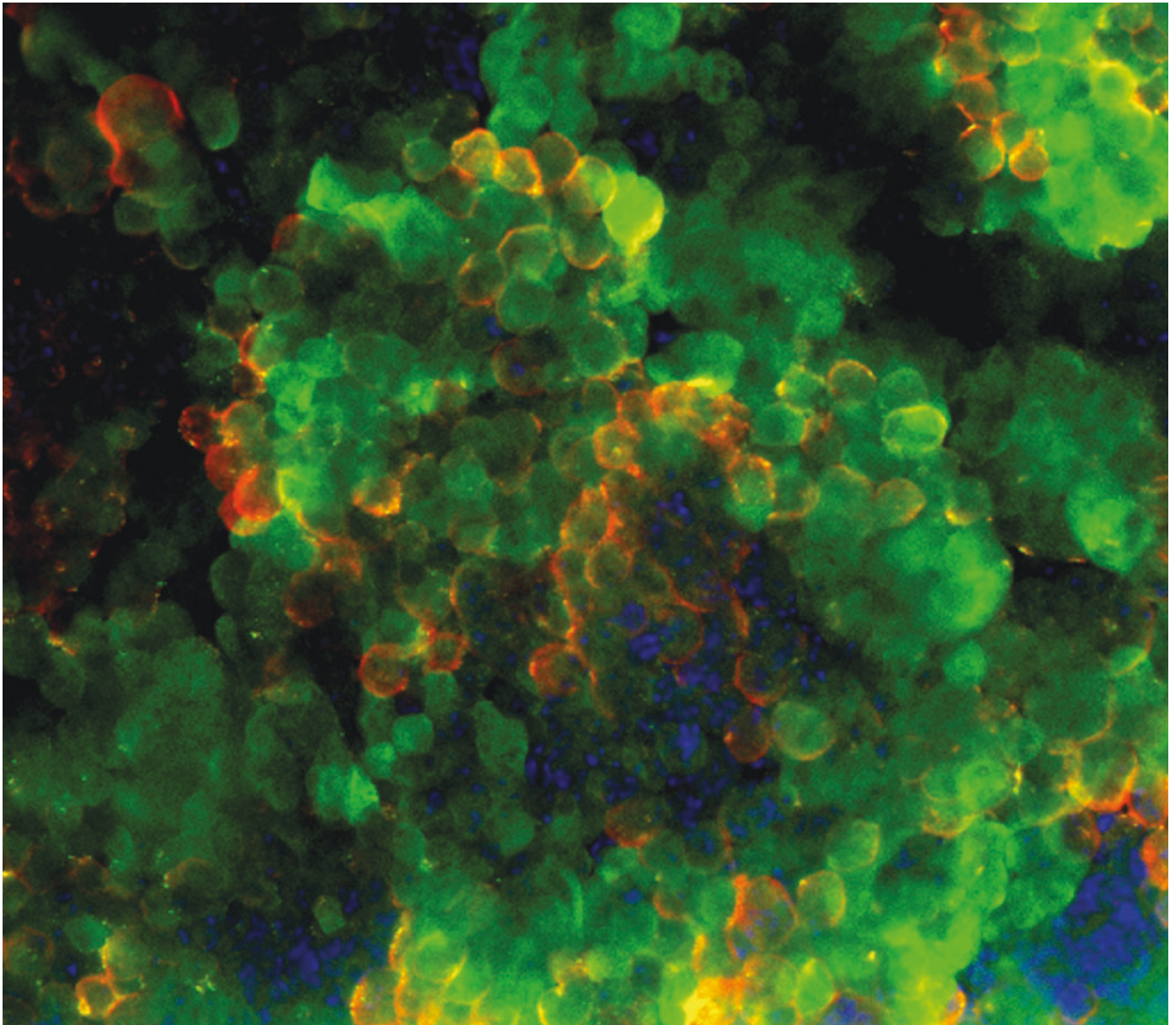


Differentiating mouse embryonic stem cells

Lia Scotti Campos, The Wellcome Trust Sanger Institute, Wellcome Trust Genome Campus, Cambridge, UK,
lsc@sanger.ac.uk



Differentiating mouse embryonic stem cells were fixed and stained to highlight immature neurons (red), neuronal cells (green) and nuclei (blue). The image was captured with a Zeiss Axioplan 2 microscope and Smartcapture 2 software. Scale bar represents 30 μm .

The winner would like to acknowledge the help of Bill Skarnes and Nigel Carter (both at the Wellcome Trust Sanger Institute, UK).