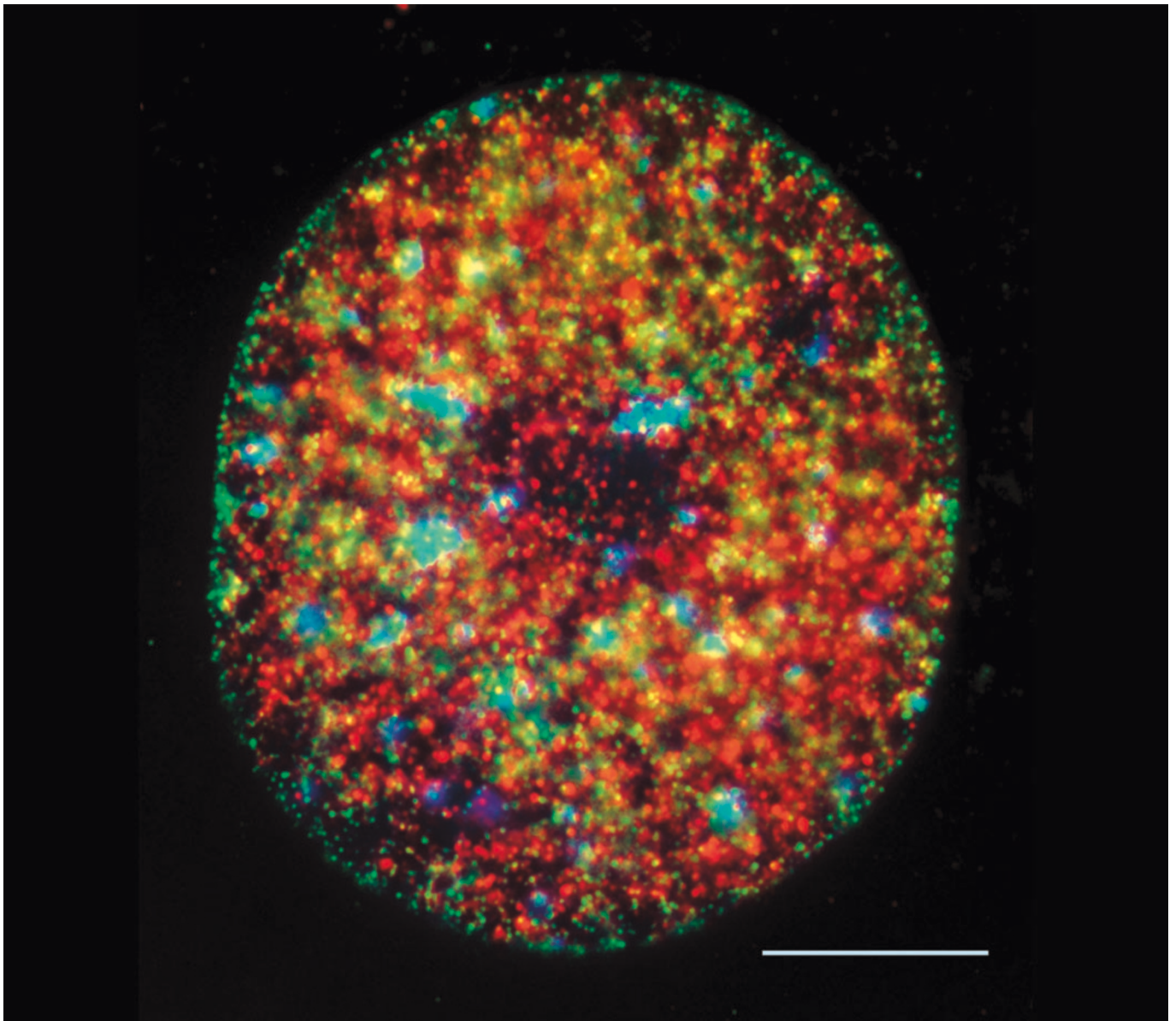


## Heterochromatic domains in a mouse nucleus

David Solomon, Department of Cell Biology, University of Cincinnati College of Medicine, USA,  
david.solomon@uc.edu



Dimethylated Lys 9 of Histone H3 is shown in green, the Swi/Snf core ATPase Brg1 in red, and DNA in blue. The image was obtained using a Nikon Microphot FX fluorescence microscope. Scale bar represents 3  $\mu\text{m}$ .

The winner would like to acknowledge the support of his advisor, Erik Knudsen, and technical assistance from Nancy Kleene (both at the University of Cincinnati College of Medicine, USA).